

CAPE HAYAT

A CURATED COLLECTION BY RAK PROPERTIES



AN
EVOLVING
EMIRATE



Nestled between the mountains of Jebel Jais and the wide open ocean, Ras Al Khaimah, a vibrant UAE emirate is packed with natural beauty, culture and heritage. Over the years, it has become a prominent destination.

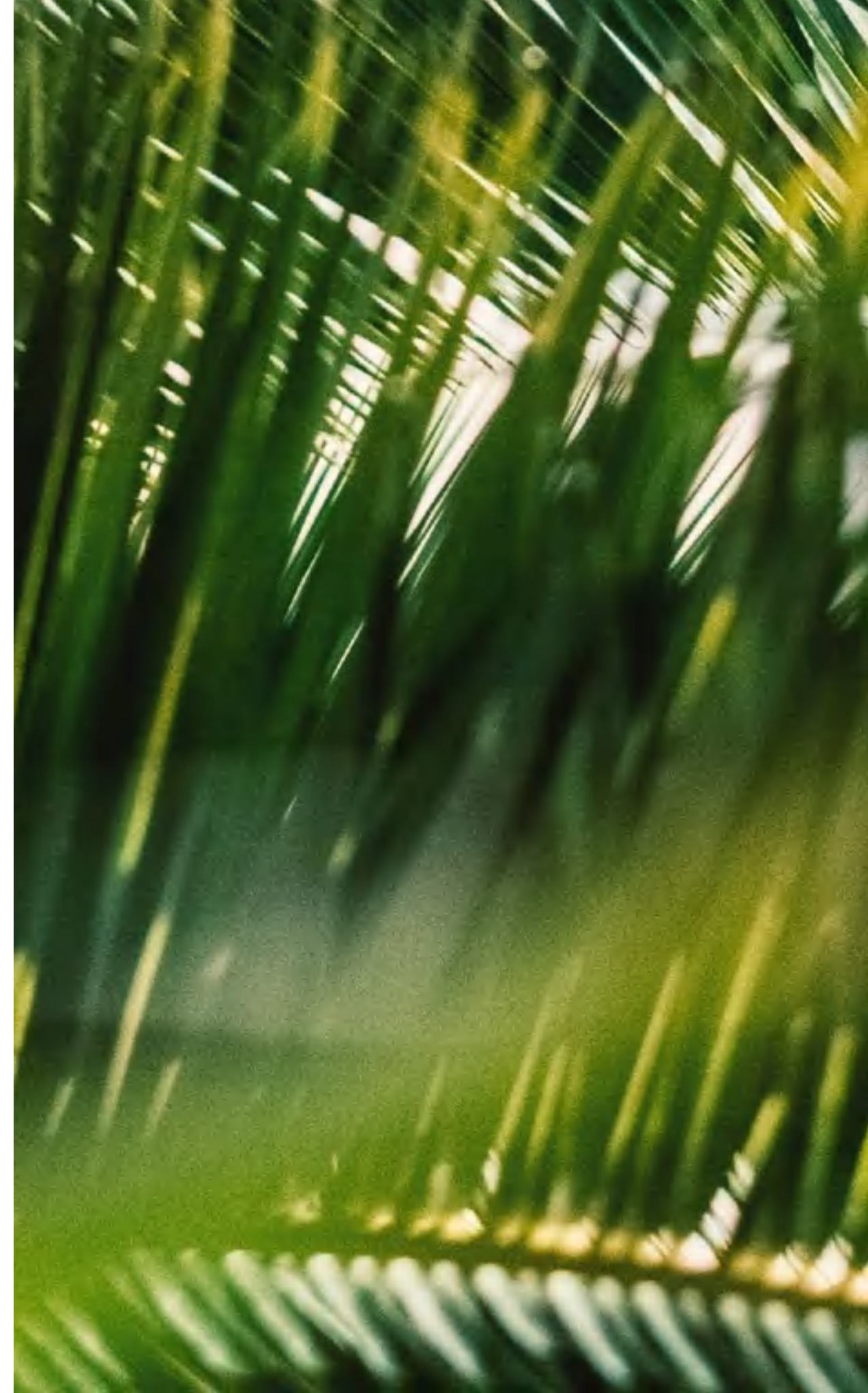


ENHANCING LIVES & PLACES

As we move towards an exciting future for Ras Al Khaimah, we have made it our mission to be the most respected lifestyle developer building communities that embody the spirit of Ras Al Khaimah. Our flagship projects like Julphar Towers and Mina Al Arab confirm the standing of RAK Properties as one of the prime property developers in the Emirate.

URBAN ISLAND LIVING

We all aspire to a beautiful life, by the ocean. With golden sands at our feet and sea breeze in our hair. Welcome to Mina Al Arab, an extraordinary urban island destination in the heart of Ras Al Khaimah, that combines the best of urban living with the tranquillity of island life. It has been carefully designed to provide a sustainable and inspiring environment where residents and visitors can indulge in remarkable experiences and create lasting memories.



CAPTURING THE WONDERS OF NATURE

Mina Al Arab is devoted to preserving and showcasing the beauty of the Arabian Gulf and its ecosystem, home to a variety of fascinating marine life. With more than 2 million square meters of protected mangrove area, flamingo reserve, turtles and more. Providing a unique opportunity to live in a vibrant environment and experience the beauty of the surroundings on a daily basis.





MINA AL ARAB MASTERPLAN

- 01. THE BEACH FRONT
- 02. GRANDA VILLAS
- 03. LAGOON WALK
- 04. MALIBU VILLAS
- 05. FLAMINGO VILLAS
- 06. ANANTARA RESORT & SPA
- 07. ECO LODGE
- 08. MARBELLA VILLAS I
- 09. MARBELLA VILLAS II
- 10. GATEWAY II RESIDENCES
- 11. INTERCONTINENTAL HOTEL: RESORT & SPA
- 12. BAY RESIDENCES
- 13. NASIM LOFTS
- 14. BAY VIEWS
- 15. CAPE HAYAT
- 16. BERMUDA VILLAS
- 17. GATEWAY I RESIDENCES
- 18. PORTO PLAYA BY ELLINGTON PROPERTIES
- 19. THE HARBOUR

HOLIDAY LIVING - EVERYDAY

Everyday convenience meets a laidback lifestyle at Hayat Island. With a dynamic community rooted in unique experiences, Hayat Island is an embodiment of island life.



CAPE HAYAT

01. CAPE HAYAT

02. BAYVIEWS

03. BAY RESIDENCES

04. NASIM LOFTS

05. INTERCONTINENTAL HOTEL RESORT & SPA

06. MARBELLA VILLAS I

07. MARBELLA VILLAS II

08. GATEWAY II RESIDENCES

09. LIFESTYLE HOTEL & VILLAS

10. BRANDED APARTMENTS

11. BRANDED VILLAS

12. PORTO PLAYA BY ELLINGTON PROPERTIES





UNMATCHED HOSPITALITY OFFERINGS AT YOUR DOORSTEP

~



INTERCONTINENTAL®

RAS AL KHAIMAH
MINA AL ARAB RESORT & SPA

The prestigious InterContinental Mina Al Arab Resort is located on Hayat Island, with 350 guest rooms and suites, as well as dazzling facilities that include a health club, spa, two swimming pools, fitness centre, and a selection of restaurants.

With the diverse and spectacular Ras Al Khaimah fast on the rise as the UAE's desired destination for getaways, nature, and relaxation, the InterContinental Mina Al Arab Resort is a top choice for guests and residents that are used only to the best, and expect it at every turn.

ANANTARA HOTEL

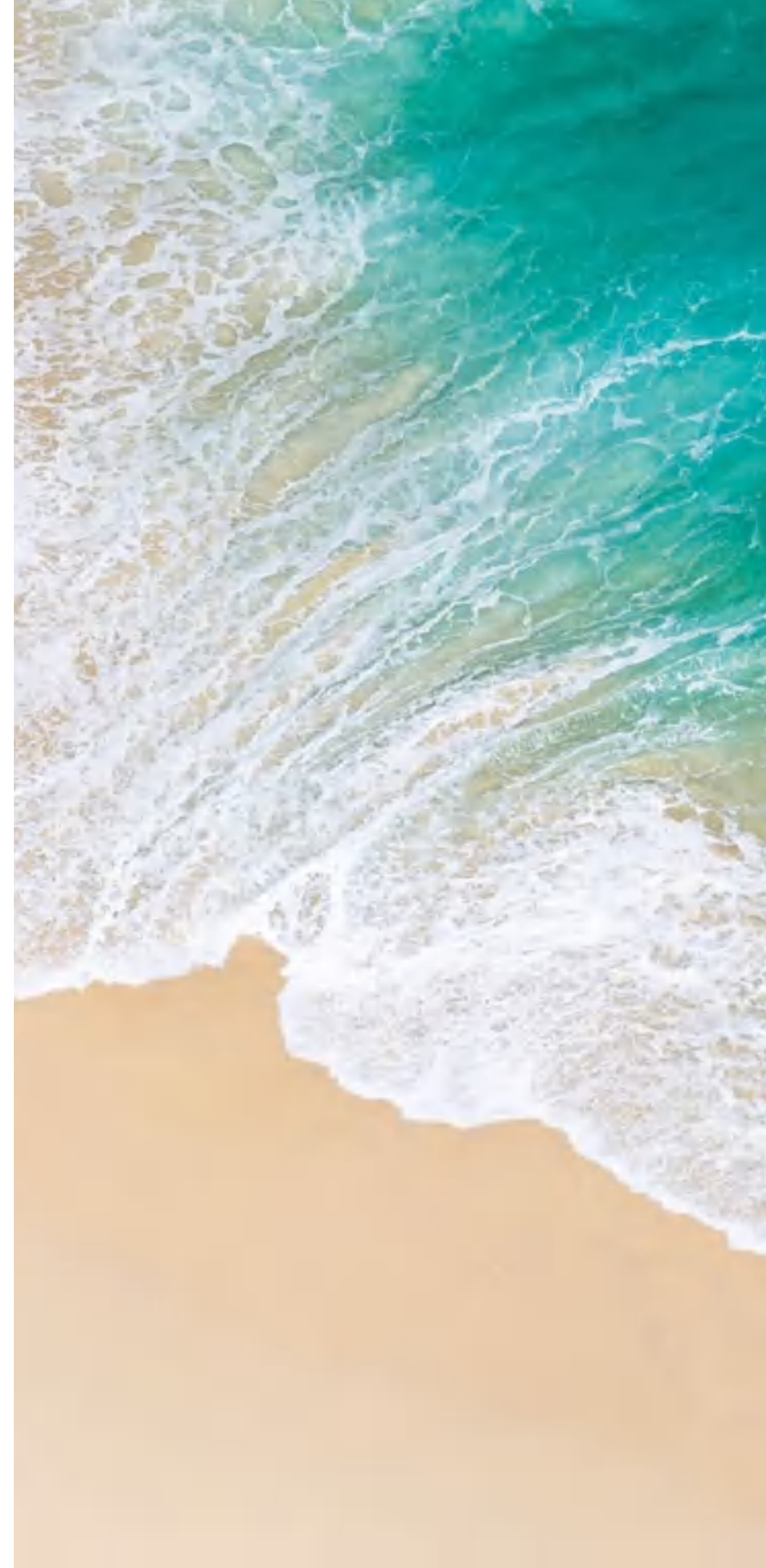
Anantara Mina Al Arab Ras Al Khaimah Resort will feature the emirate's first Maldivian inspired overwater villas complex. With a 9,000 sqm private beach which overlooks the stunning eco-reserve lined with mangroves, the resort will also be home to a number of first class health and sports amenities such as the world-famous Anantara Spa, swimming pools and a tennis court.

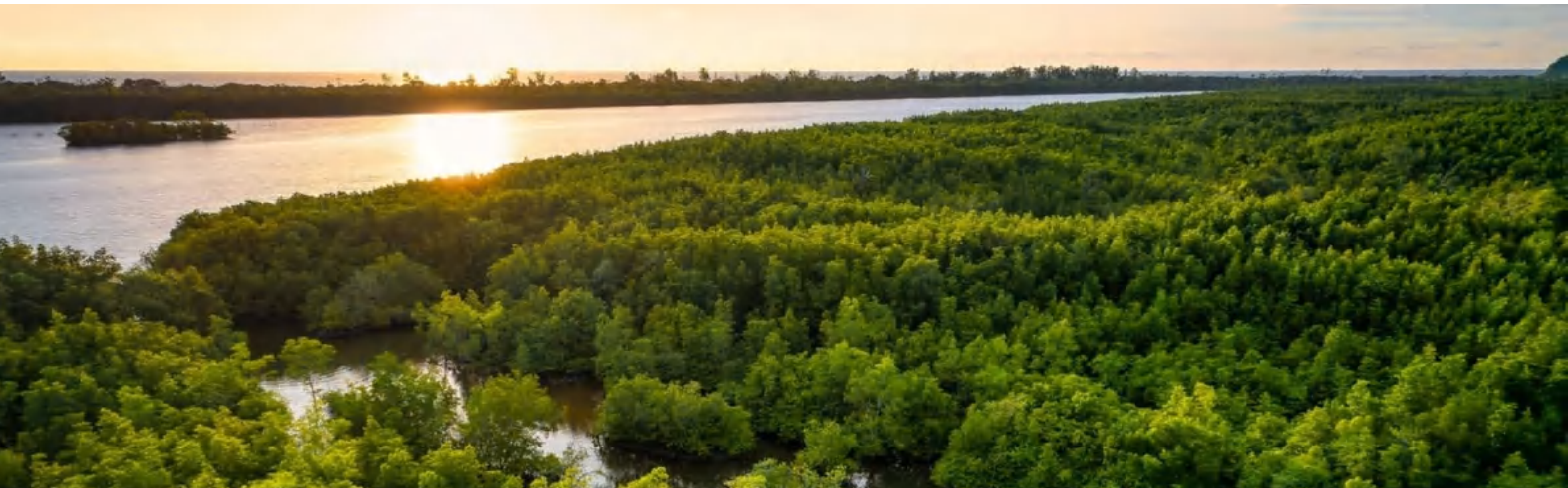


In addition, the resort will have four restaurant offerings, including a Thai specialty restaurant and a seafood restaurant, all of which creates the perfect ambience to both relax and be entertained.



SAY HELLO
TO GOLDEN
SANDS AND
STUNNING
VISTAS





Cape Hayat signifies a luxurious enclave on Hayat Island, invoking the essence of a coastal retreat. With unmatched views of the ocean and mangroves, Cape Hayat echoes the harmony of thoughtful design and nature, creating moments of unmatched beauty for its residents.

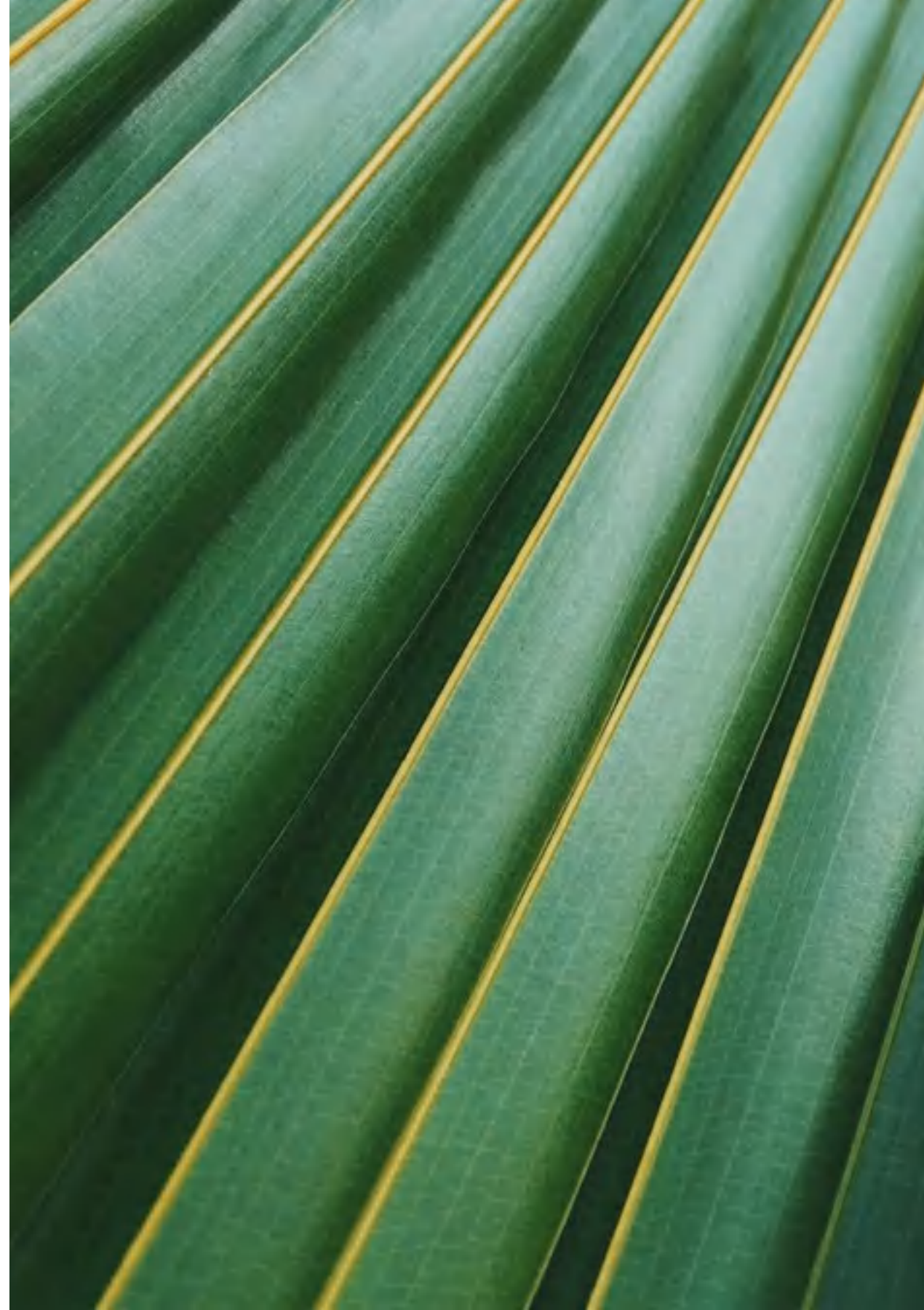
From studios, 1 & 2BR apartments to 4 BR Penthouses, our design celebrates the essence of seaside living with panoramic vistas that redefine luxury.

BREATHING SPACE FOR ALL

Built with an open layout in mind, each residential unit at Cape Hayat allows for panoramic views of either the ocean, the canal or the mangroves. Never miss a sunset at Cape Hayat from the unique vantage point of your home.







SUSTAINABLE & STYLISH

~
At Cape Hayat sustainability is a way of life.

We have carefully integrated eco-conscious features into every aspect of our design, ensuring a harmonious coexistence with the environment. From using locally sourced materials, to energy efficient lighting and water management features, from 12 EV charging stations to ensuring ample natural light with full height windows; our design principles reflect our commitment to sustainability while delivering an immersive, vibrant lifestyle.

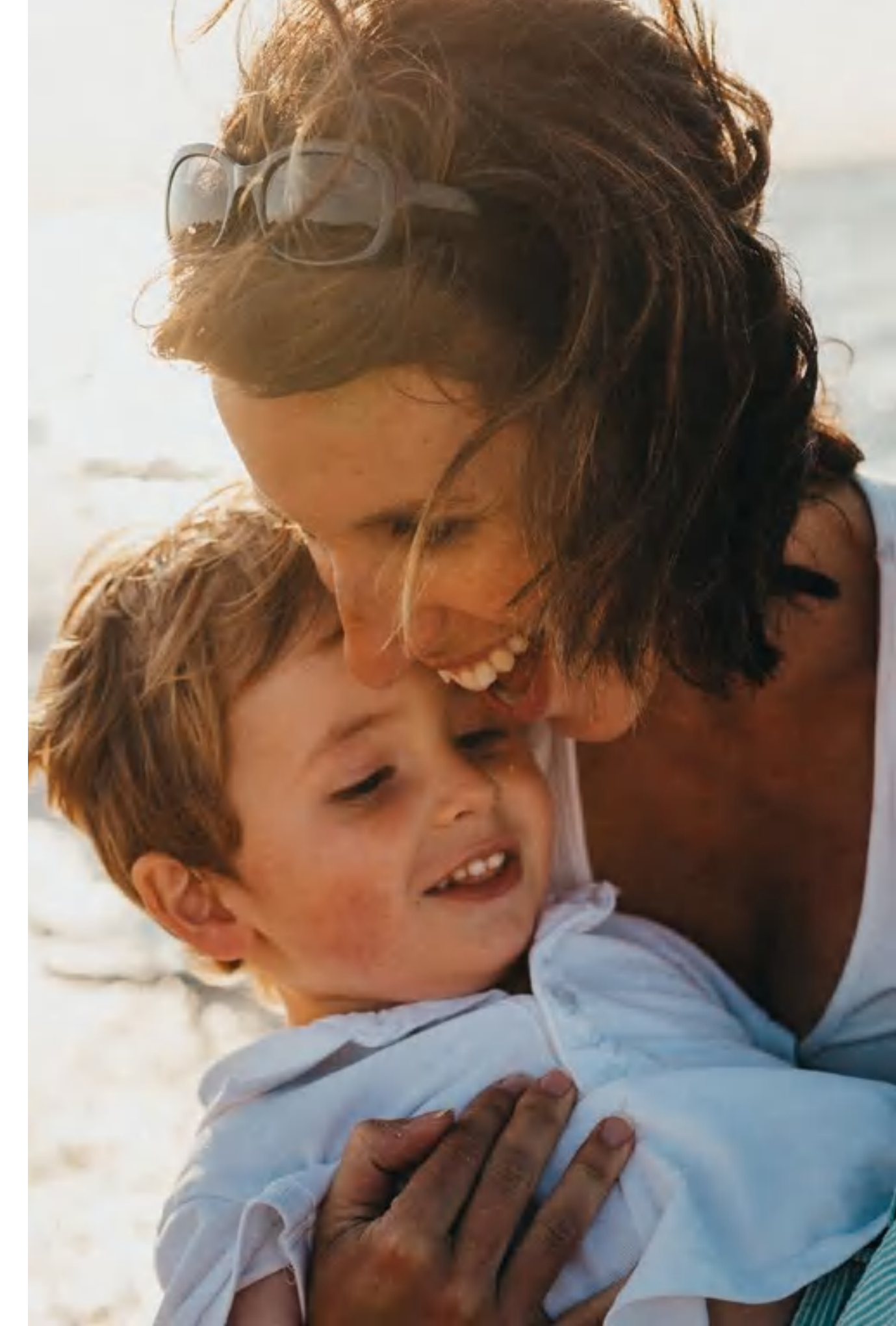




A VIBRANT COMMUNITY AWAITS

At the heart of Cape Hayat is our vibrant community – a place where residents and guests come together to create memories and celebrate life. Whether you're looking for relaxation, adventure, or simply the pleasure of good company, you'll find it here.

Come, experience the best of luxury hospitality, fine dining and retail offerings at your doorstep. Where every day is a holiday, and every moment is a cherished memory.





Discover the true meaning of luxury at Cape Hayat; where the blue sky is an extension of the open sea; where exceptional entertainment venues are a delightful stroll away; and time is measured by the sound of waves rolling into the shore.

 Studio, 1, 2 Bedroom Apartments & 4 Penthouses

 Beach Access

 Swimming Pool

 Views of the Sea

 Fully Equipped Gym

 Retail Front at Ground Level





1BR DINING
& KITCHEN AREA



1BR LIVING ROOM



2BR BED ROOM



2BR KITCHEN



4BR PENTHOUSE
DINING AREA



PENTHOUSE LOBBY
& PRIVATE POOL



PENTHOUSE
FORMAL LOUNGE



PENTHOUSE
BATHROOM

IMPECCABLE
FROM EVERY
ANGLE

~



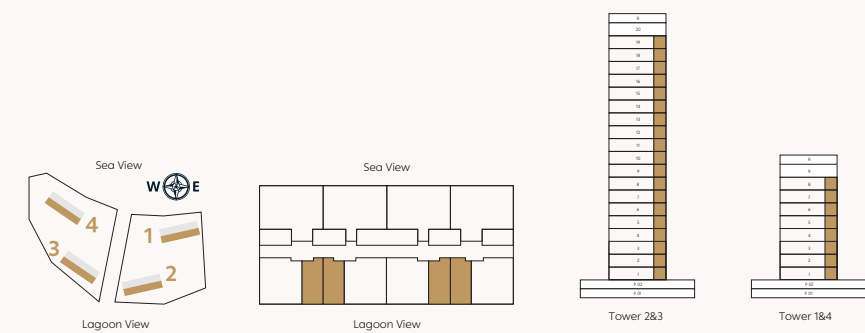
Come home to living spaces that exude sophistication, comfort with large windows welcoming in natural light and providing wonderful views of the sea. A neutral material palette adding a warm ambiance.

TYPICAL TOWER

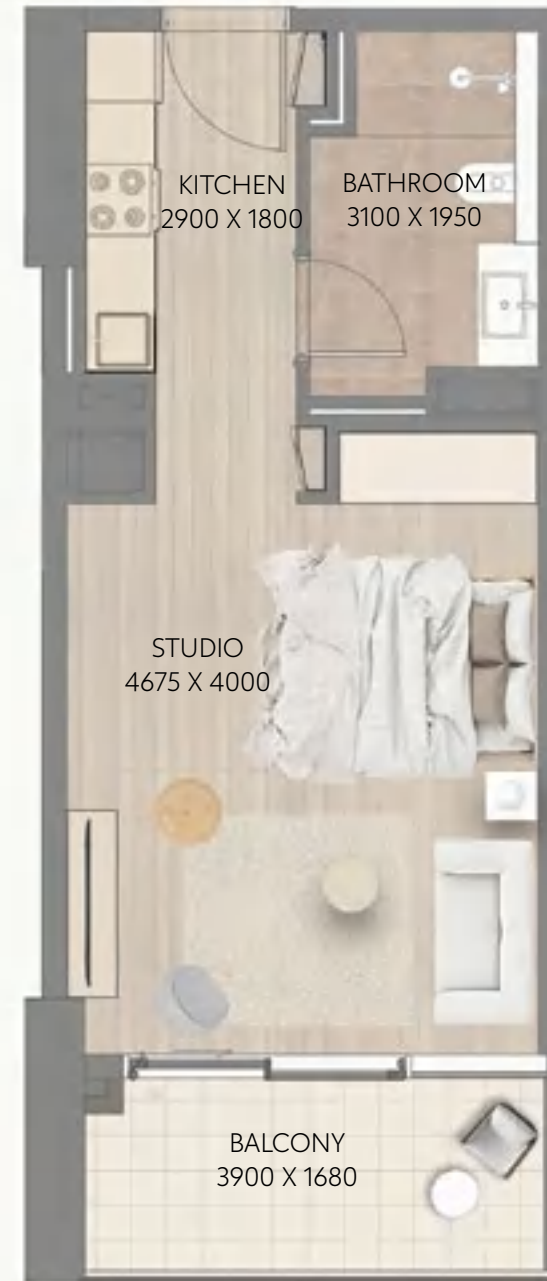
Studio Type 1 (Central)

TYPE 1	SQ.F	SQ.M
Apartment Area	387.39	35.99
Balcony Area	78.58	7.30
Total Area	465.97	43.29

FLOOR	UNIT NO.
Tower 2 & Tower 3: L01	02, 03, 06, 07
Tower 2 & Tower 3: L02-L03	05, 06, 09, 10
Tower 2 & Tower 3: L04-L19	04, 05, 08, 09
Tower 1 & Tower 4: L01-L03	05, 06, 09, 10
Tower 1 & Tower 4: L04-L08	04, 05, 08, 09



Floor plan numbers, square footage, and floor plans are approximate. Final dimensions, square footage and floor plans may vary or may be mirrored. Balcony area varies depending on location of unit on the floor.

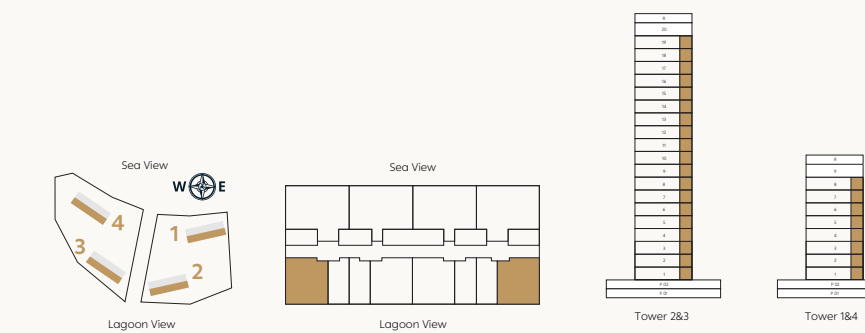


TYPICAL TOWER

1 Bedroom Type 1 (Corner)

TYPE 1	SQ.F	SQ.M
Apartment Area	820.53	76.23
Balcony Area	159.41	14.81
Total Area	979.94	91.04

FLOOR	UNIT NO.
Tower 2 & Tower 3: L01	01, 08
Tower 2 & Tower 3: L02-L03	04, 11
Tower 2 & Tower 3: L04-L19	03, 10
Tower 1 & Tower 4: L01-L03	04, 11
Tower 1 & Tower 4: L04-L08	03, 10



Floor plan numbers, square footage, and floor plans are approximate. Final dimensions, square footage and floor plans may vary or may be mirrored. Balcony area varies depending on location of unit on the floor.

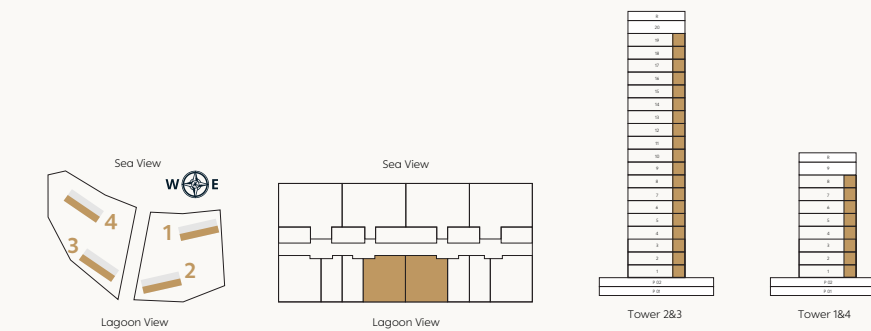


TYPICAL TOWER

1 Bedroom Type 2 (Central)

TYPE 1	SQ.F	SQ.M
Apartment Area	806.86	74.96
Balcony Area	157.05	14.59
Total Area	963.91	89.55

FLOOR	UNIT NO.
Tower 2 & Tower 3: L01	04, 05
Tower 2 & Tower 3: L02-L03	07, 08
Tower 2 & Tower 3: L04-L19	06, 07
Tower 1 & Tower 4: L01-L03	07, 08
Tower 1 & Tower 4: L04-L08	06, 07



Floor plan numbers, square footage, and floor plans are approximate. Final dimensions, square footage and floor plans may vary or may be mirrored. Balcony area varies depending on location of unit on the floor.

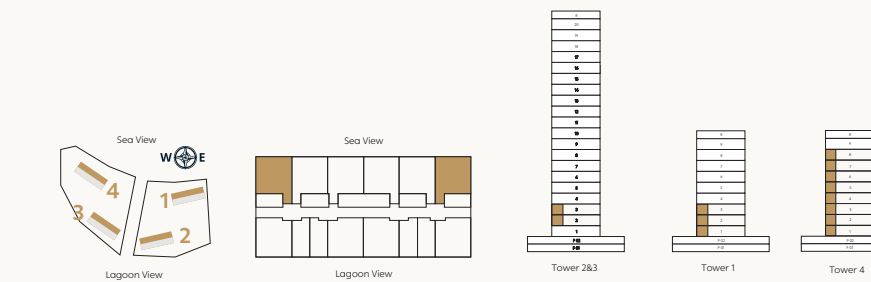


TYPICAL TOWER

1 Bedroom Type 3 (Corner)

TYPE 1	SQ.F	SQ.M
Apartment Area	883.61	82.09
Balcony Area	291.92	27.12
Total Area	1175.53	109.21

FLOOR	UNIT NO.
Tower 2 & Tower 3: L02-L03	03, 012
Tower 1 : L01-L03	03,012
Tower 4 : L01-L08	03, 012



Floor plan numbers, square footage, and floor plans are approximate. Final dimensions, square footage and floor plans may vary or may be mirrored. Balcony area varies depending on location of unit on the floor.

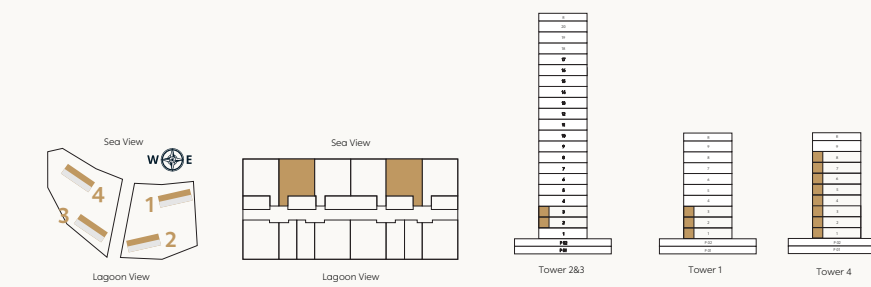


TYPICAL TOWER

1 Bedroom Type 4 (Middle)

TYPE 1	SQ.F	SQ.M
Apartment Area	798.79	74.21
Balcony Area	204.51	19.00
Total Area	1003.30	93.21

FLOOR	UNIT NO.
Tower 2 & Tower 3: L02-L03	02, 013
Tower 1 : L01-L03	02, 013
Tower 4: L01-L08	02, 013



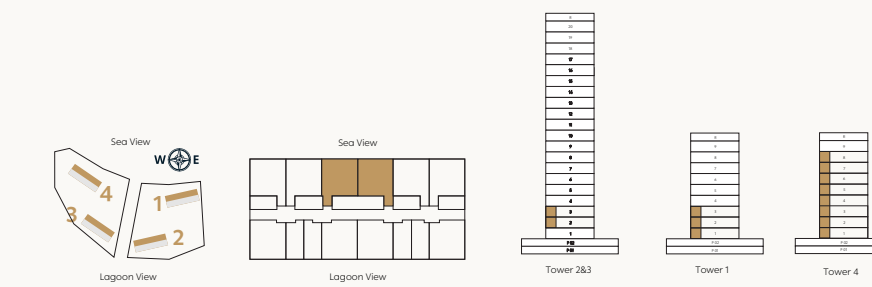
Floor plan numbers, square footage, and floor plans are approximate. Final dimensions, square footage and floor plans may vary or may be mirrored. Balcony area varies depending on location of unit on the floor.

TYPICAL TOWER

1 Bedroom Type 5 (Central)

TYPE 1	SQ.F	SQ.M
Apartment Area	769.30	71.47
Balcony Area	205.70	19.11
Total Area	975.00	90.58

FLOOR	UNIT NO.
Tower 2 & Tower 3: L02-L03	01, 014
Tower 1 : L01-L03	01, 014
Tower 4: L01-L08	01, 014



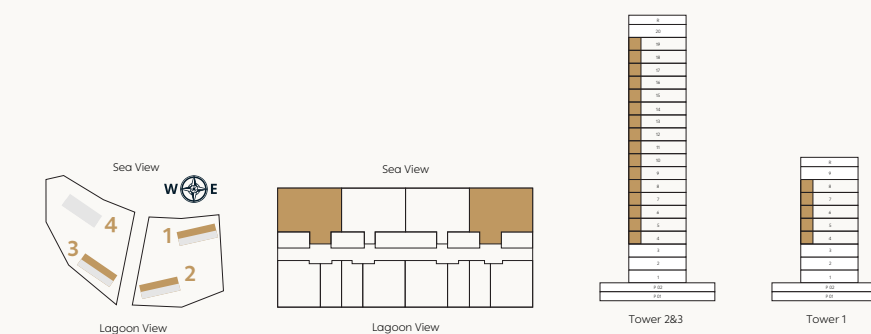
Floor plan numbers, square footage, and floor plans are approximate. Final dimensions, square footage and floor plans may vary or may be mirrored. Balcony area varies depending on location of unit on the floor.

TYPICAL TOWER

2 Bedroom Type 1 (Corner)

TYPE 1	SQ.F	SQ.M
Apartment Area	1324.61	123.06
Balcony Area	390.51	36.28
Total Area	1715.12	159.34

FLOOR	UNIT NO.
Tower 2 & Tower 3: L04-L19	02, 011
Tower 1 : L04-L08	02, 011



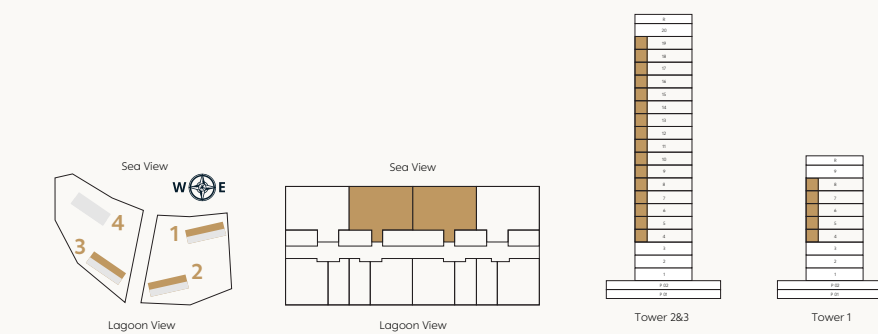
Floor plan numbers, square footage, and floor plans are approximate. Final dimensions, square footage and floor plans may vary or may be mirrored. Balcony area varies depending on location of unit on the floor.

TYPICAL TOWER

2 Bedroom Type 2 (Middle)

TYPE 1	SQ.F	SQ.M
Apartment Area	1140.54	105.96
Balcony Area	306.77	28.50
Total Area	1447.31	134.46

FLOOR	UNIT NO.
Tower 2 & Tower 3: L04-L19	01, 012
Tower 1 : L04-L08	01, 012



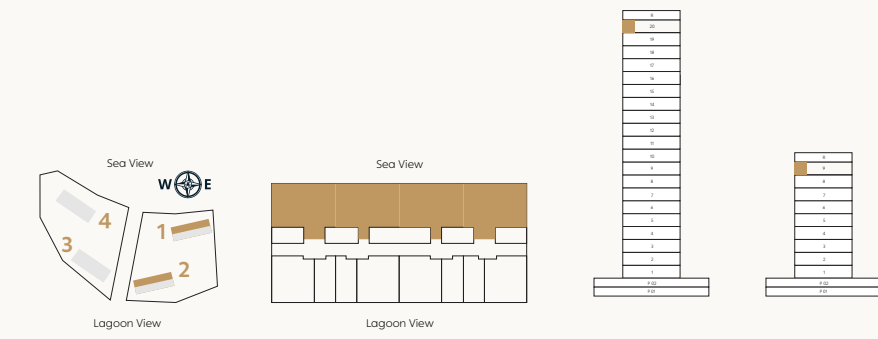
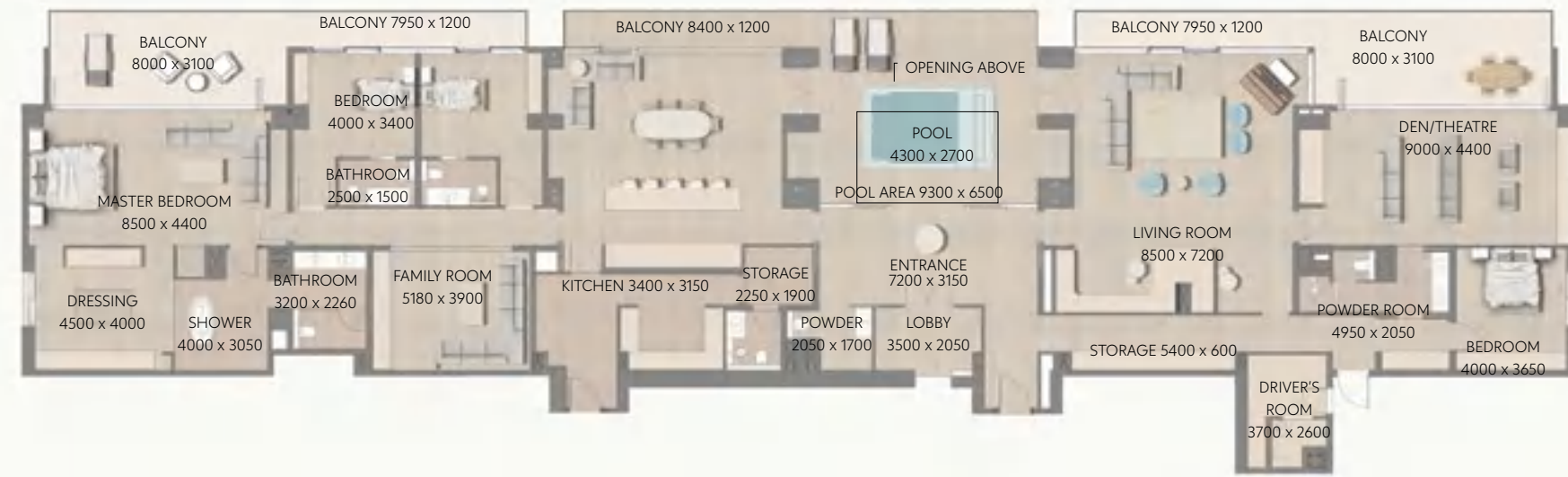
Floor plan numbers, square footage, and floor plans are approximate. Final dimensions, square footage and floor plans may vary or may be mirrored. Balcony area varies depending on location of unit on the floor.

TYPICAL TOWER

Penthouse Type 1 (Tower 1 & 2)

TYPE 1	SQ.F	SQ.M
Apartment Area	5097.57	473.58
Balcony Area	1768.08	164.26
Total Area	6865.65	637.84

FLOOR	UNIT NO.
Tower 1: L09	PH1
Tower 2: L20	PH1



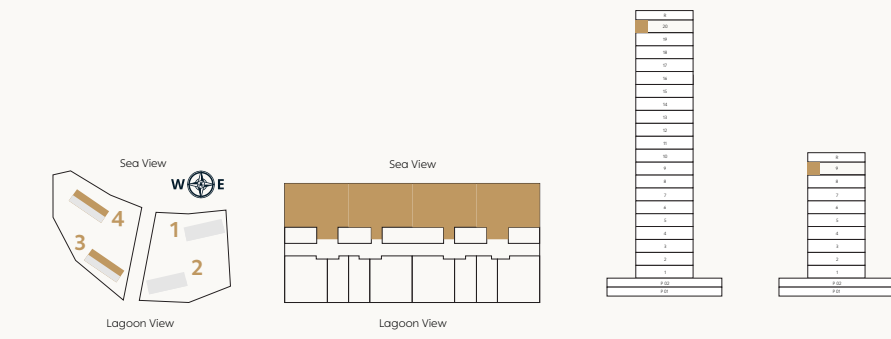
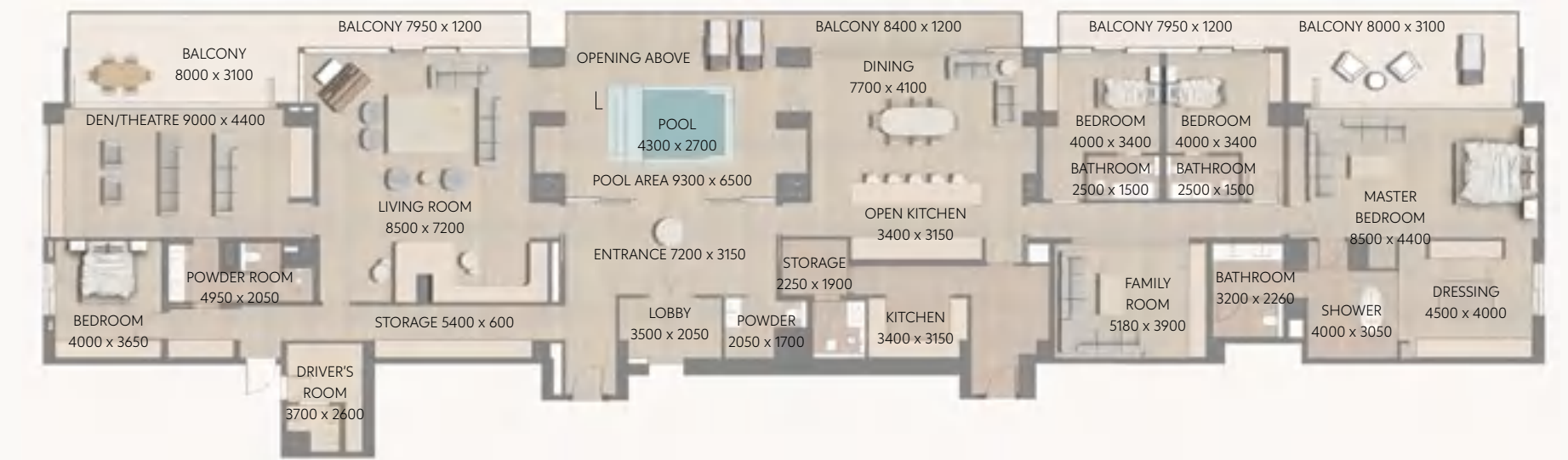
Floor plan numbers, square footage, and floor plans are approximate. Final dimensions, square footage and floor plans may vary or may be mirrored. Balcony area varies depending on location of unit on the floor.

TYPICAL TOWER

Penthouse Type 1 (Tower 3 & 4)

TYPE 1	SQ.F	SQ.M
Apartment Area	5101.23	473.92
Balcony Area	1787.99	166.11
Total Area	6889.22	640.03

FLOOR	UNIT NO.
Tower 3: L20	PH1
Tower 4: L09	PH1



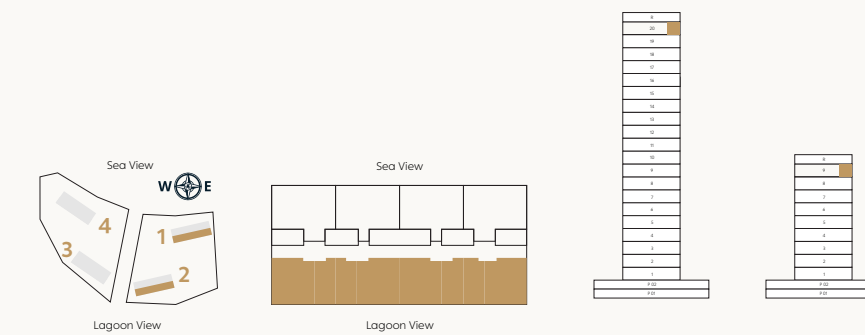
Floor plan numbers, square footage, and floor plans are approximate. Final dimensions, square footage and floor plans may vary or may be mirrored. Balcony area varies depending on location of unit on the floor.

TYPICAL TOWER

Penthouse Type 2 (Tower 1 & 2)

TYPE 1	SQ.F	SQ.M
Apartment Area	5108.23	474.57
Balcony Area	1711.46	159.00
Total Area	6819.69	633.57

FLOOR	UNIT NO.
Tower 1: L09	PH2
Tower 2: L20	PH2



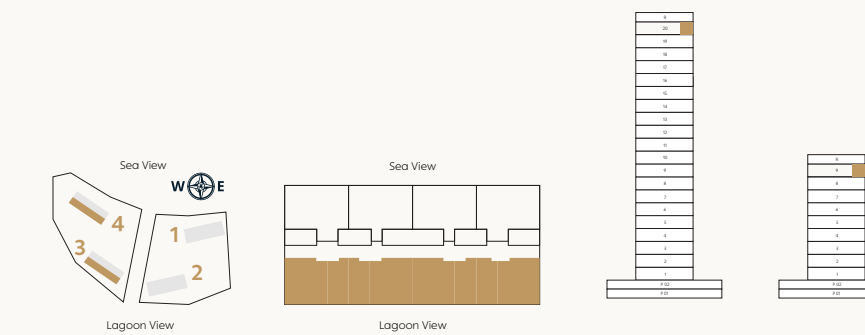
Floor plan numbers, square footage, and floor plans are approximate. Final dimensions, square footage and floor plans may vary or may be mirrored. Balcony area varies depending on location of unit on the floor.

TYPICAL TOWER

Penthouse Type 2 (Tower 3 & 4)

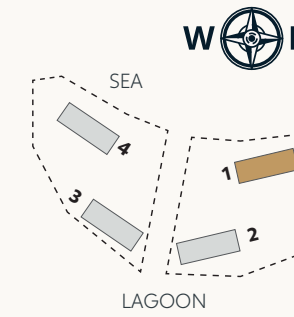
TYPE 1	SQ.F	SQ.M
Apartment Area	4976.05	462.29
Balcony Area	1441.61	133.93
Total Area	6417.66	596.22

FLOOR	UNIT NO.
Tower 3: L20	PH2
Tower 4: L09	PH2

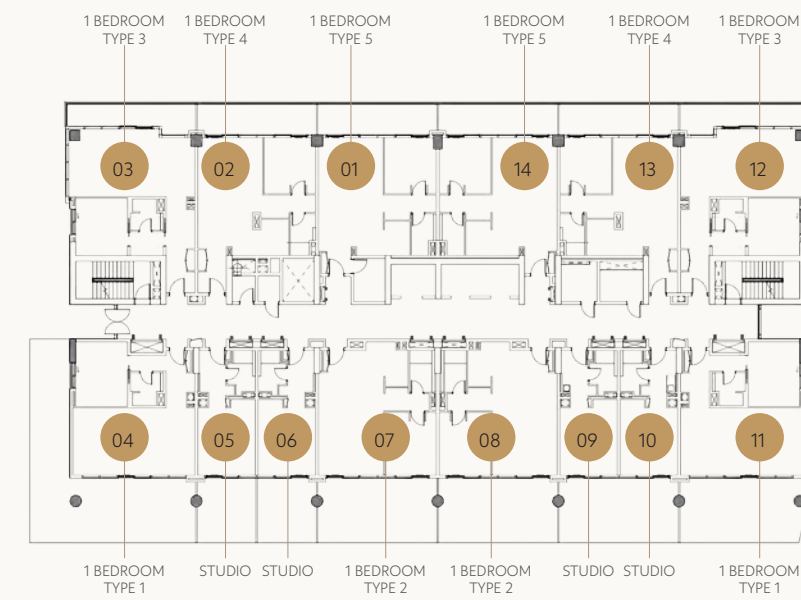


Floor plan numbers, square footage, and floor plans are approximate. Final dimensions, square footage and floor plans may vary or may be mirrored. Balcony area varies depending on location of unit on the floor.

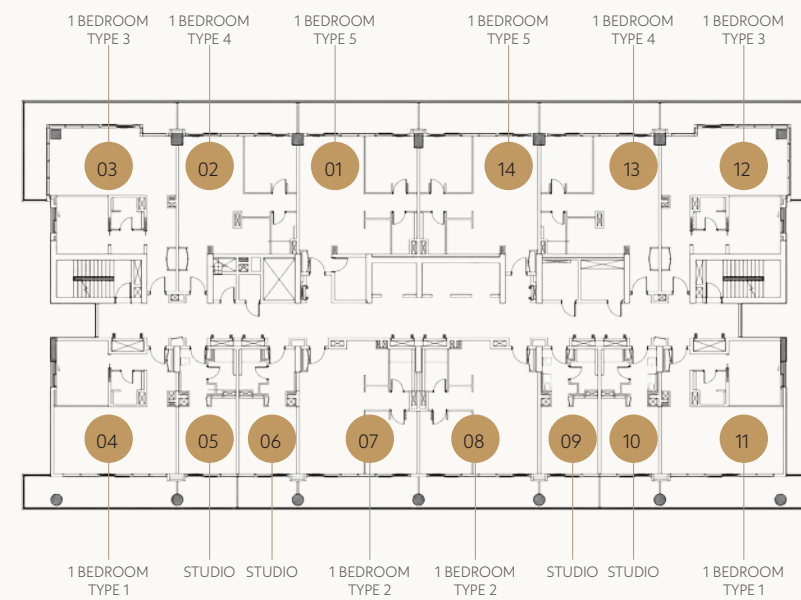
CAPE HAYAT TOWER 1



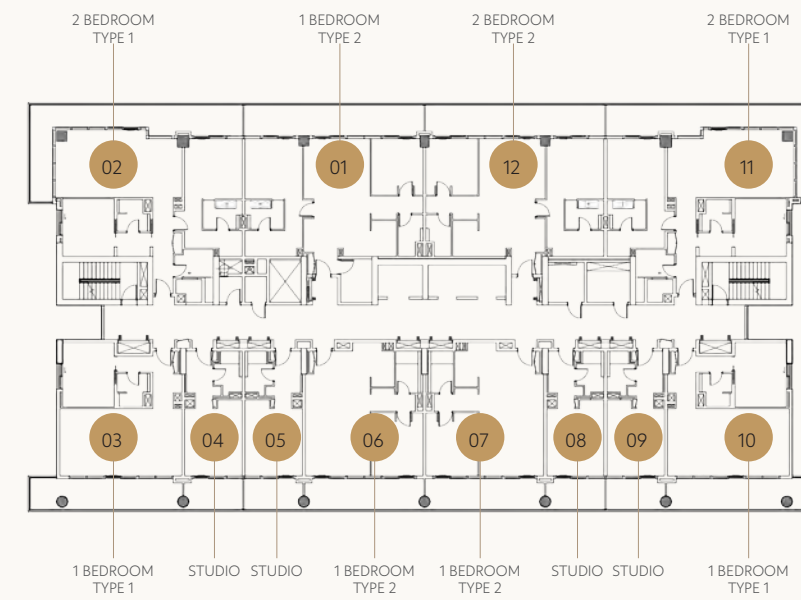
LEVEL 01



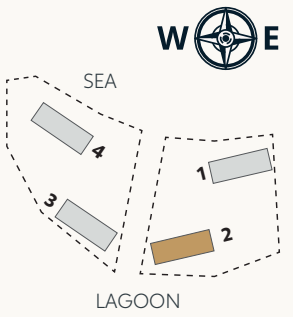
LEVELS 02-03



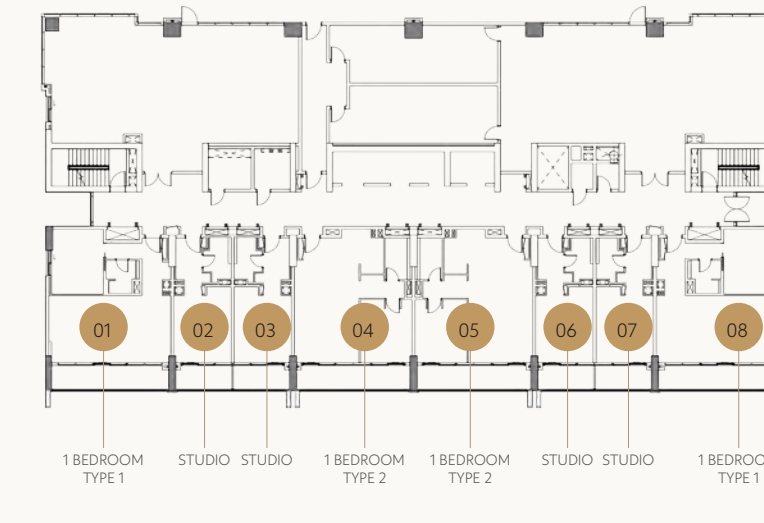
LEVELS 04-08



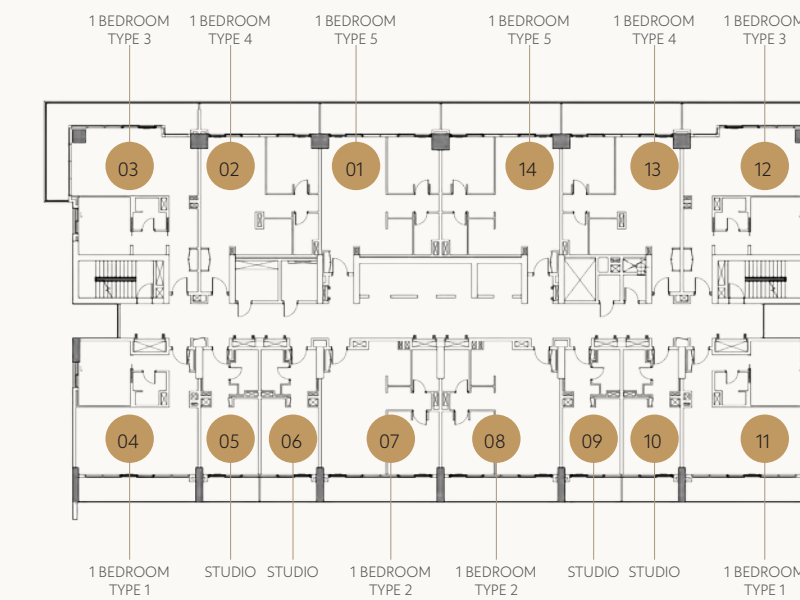
CAPE HAYAT TOWER 2



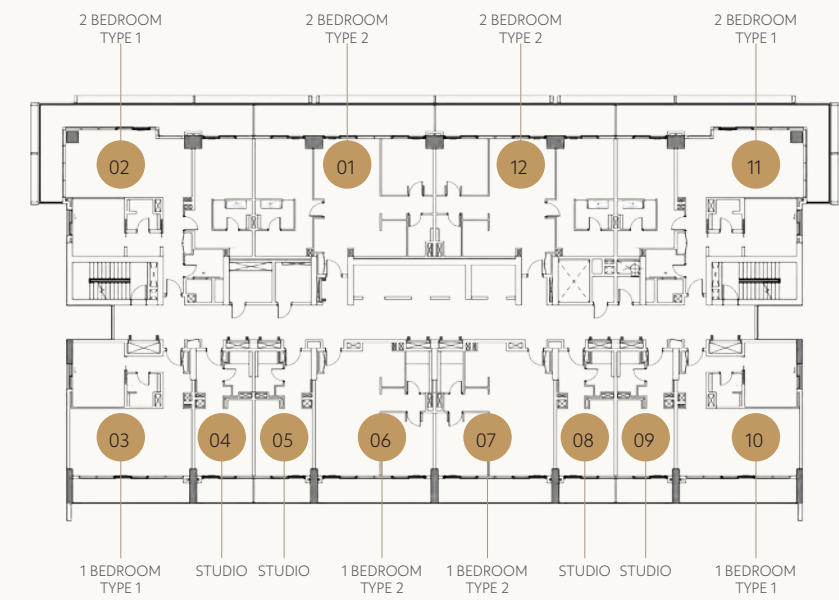
LEVEL 01



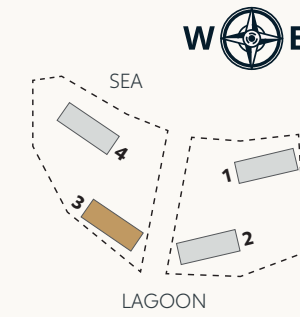
LEVELS 02-03



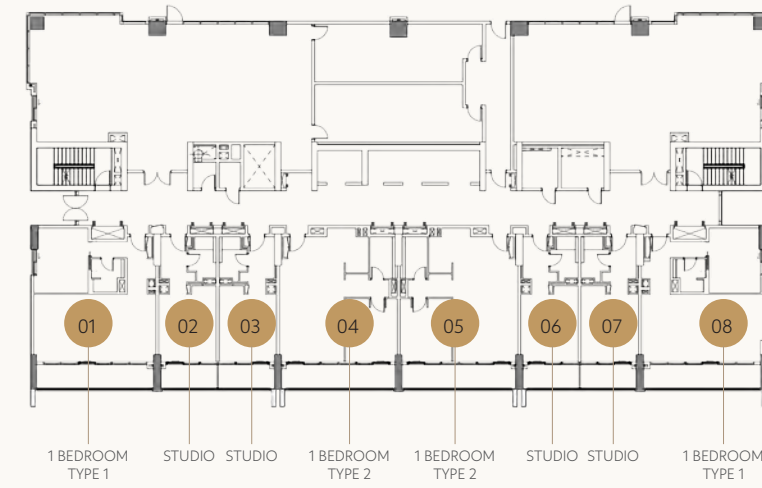
LEVELS 04-19



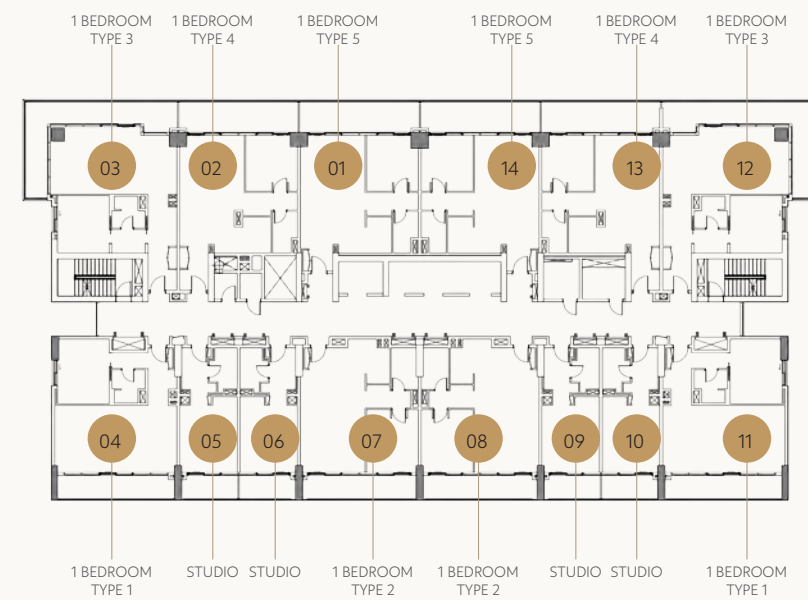
CAPE HAYAT TOWER 3



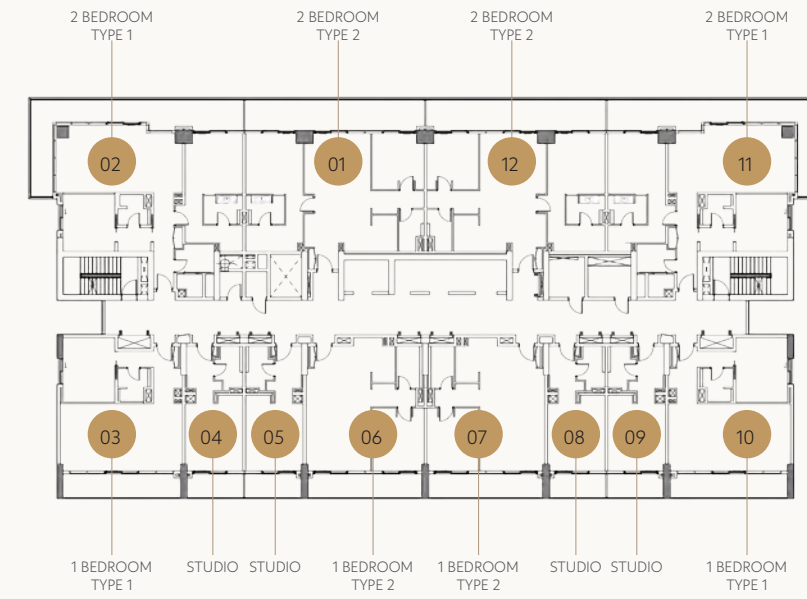
LEVEL 01



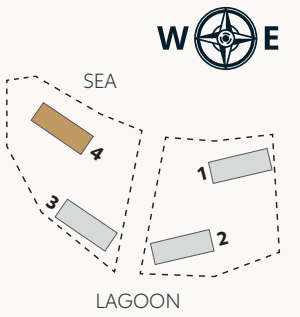
LEVELS 02-03



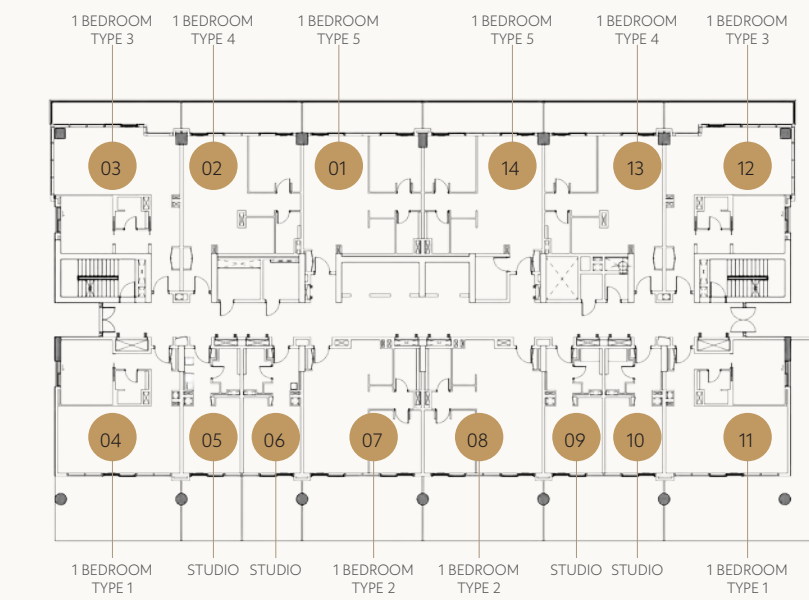
LEVELS 04-19



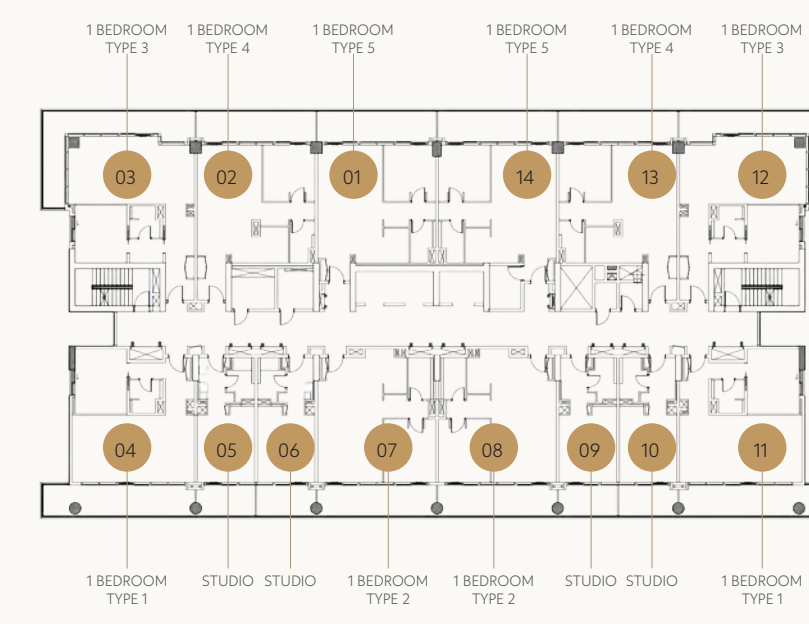
CAPE HAYAT TOWER 4



LEVEL 01



LEVELS 02-08



CAPE HAYAT

A CURATED COLLECTION BY RAK PROPERTIES



FOR MORE INFORMATION PLEASE CALL 800 40 20

RAKPROPERTIES.AE