

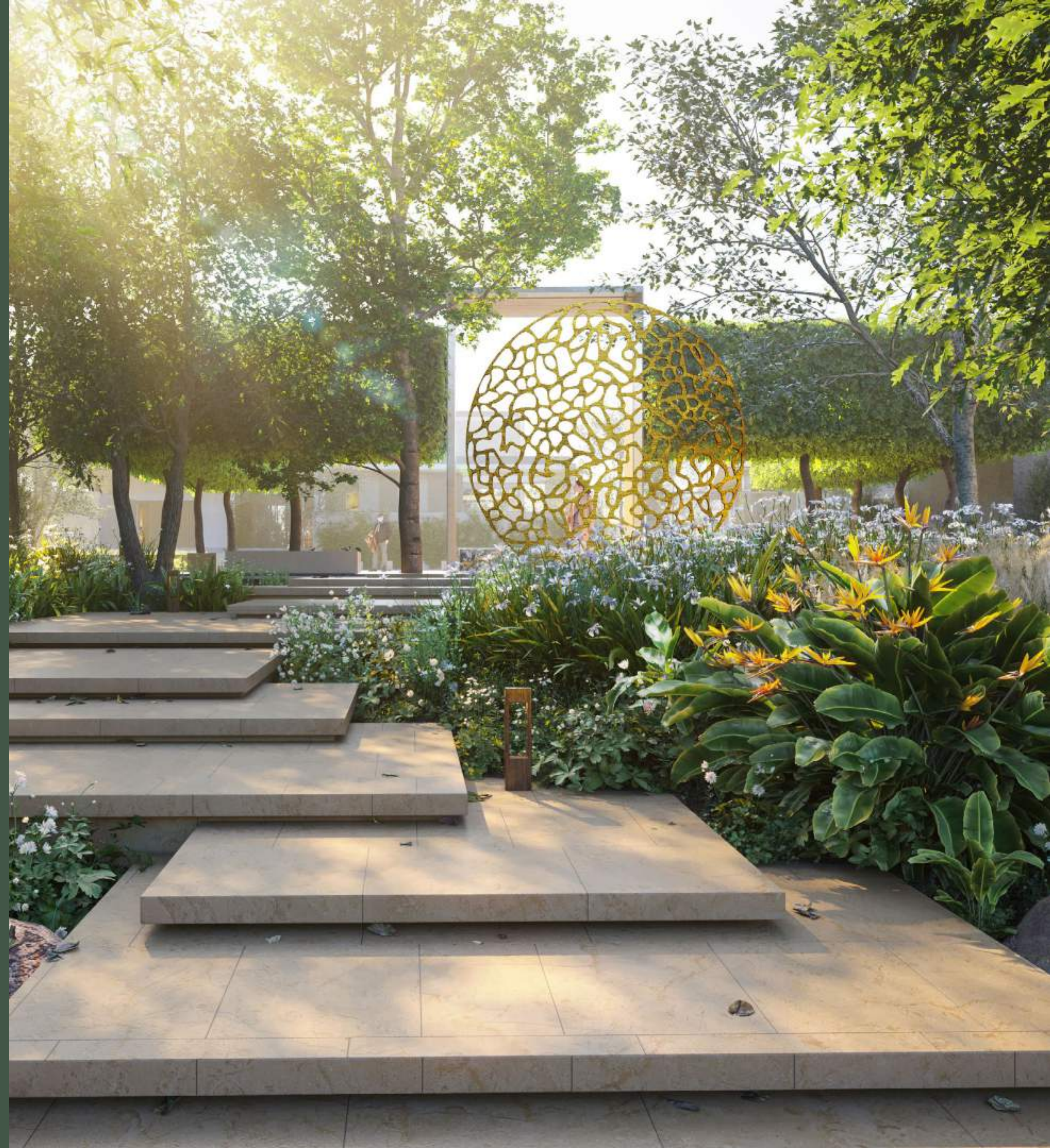
ELYSIAN
MANSIONS

PARK LANE

A STUNNING ESTATE GARDEN

Situated amidst the largest private gardens in Tilal Al Ghaf, the Park Lane residences feature unfettered access to a lush, natural terrain, inspired by the world's grandest estates. Complementing the expansive gardens are the landscapes of the private Mansions, expertly designed to blur the lines between nature and architecture.

Owners can choose between a number distinct home types for these premium plots, with interior, exterior, and landscape designs tailored to your specifications.





TILAL AL GHAF MASTERPLAN



ELYSIAN
MANSIONS

- | | | | | | |
|------------------|-------------------------------|----------------------|-----------------------|---------------------------|------------------------------|
| Sandy Beach | Central Park | Indoor & Outdoor Gym | Children's Play Areas | International School | Daycare |
| Beach Cabanas | 18km Walking & Cycling Trails | Basketball Court | Water Splash Park | Beach Restaurants & Cafés | Holistic Healthcare Facility |
| Beach Volleyball | Table Tennis | Outdoor Cinema | Swimming Pools | Community Town Centre | Mosques |
| Water Sports | Tennis Court | Skate Park | Trampoline Parks | BBQ Stations | Retail Hub |



AN OASIS OF REFINED LIVING

Elysian Mansions is an exclusive, residential waterfront enclave abutting the lagoon of Tlal Al Ghaf. Inspired by the Elysian Fields of Greek mythology, this hallmark luxury neighbourhood conceived by Majid Al Futtaim offers the most distinctive and thoughtful residences to date.

These bespoke, expertly crafted mansions are tailored to your tastes, with generous spaces, stunning finishes, and expansive pockets of natural beauty woven throughout the homes.



DISCOVER
YOUR
PERSONAL
PARADISE





QUIETLY
SOPHISTICATED

INTIMACY & HOSPITALITY



CRAFTED WITH DISTINCTION

Led by contemporary architecture, yet rooted in classic home design, Elysian Mansions offers smart, technology-enabled homes with uncompromising aesthetics.





KEYPLAN & PUBLIC REALM



ELYSIAN
MANSIONS

- 01. Main Entrance
- 02. Promenade
- 03. The Pavilion
- 04. Terraced Gardens

Lagoonside

- 05. The Orchards
- 06. The Alle
- 07. The Dining Room
- 08. The Clock Tower

- 09. The Kitchen Gardens
- 10. The Water Gardens
- 11. Sikka Gardens
- 12. The Forest Walk

Hilltop

- 13. The Tuileries
- 14. The Maze Garden
- 15. The Grand Lawn
- 16. The library of trees

- 17. The Beach Access
- 18. The Private Beach
- 19. Stargazing Room
- 20. Parking Area

Park Lane

- 21. Informal Lawn
- 22. Plazas



A BESPOKE SANCTUARY



Grand double height entry



Access to exclusive beach & recreational lagoon



Secured gated community



Luxury marble flooring



Largest exclusive park in Tital Al Ghaf



Stone cladded exterior facades



Emphasis on the indoor/outdoor relationship



Expansive terraces & outdoor spaces with upgrade options



Triple-height courtyards



Bespoke ergonomic & biophilic architecture



European kitchens with integrated appliances



Spacious walk-in closets with accessorized wardrobes



Car galleries for 6 to 8 cars



Elevator in each mansion



A selection of bespoke upgrades to suit your needs



Premium wooden flooring in bedrooms

TAILORED TO YOUR TASTES

A selection of facade palettes, ranging from deep, moody stones to warm textured neutrals, captures the individual grandeur of each mansion—creating a bespoke and private oasis all your own.



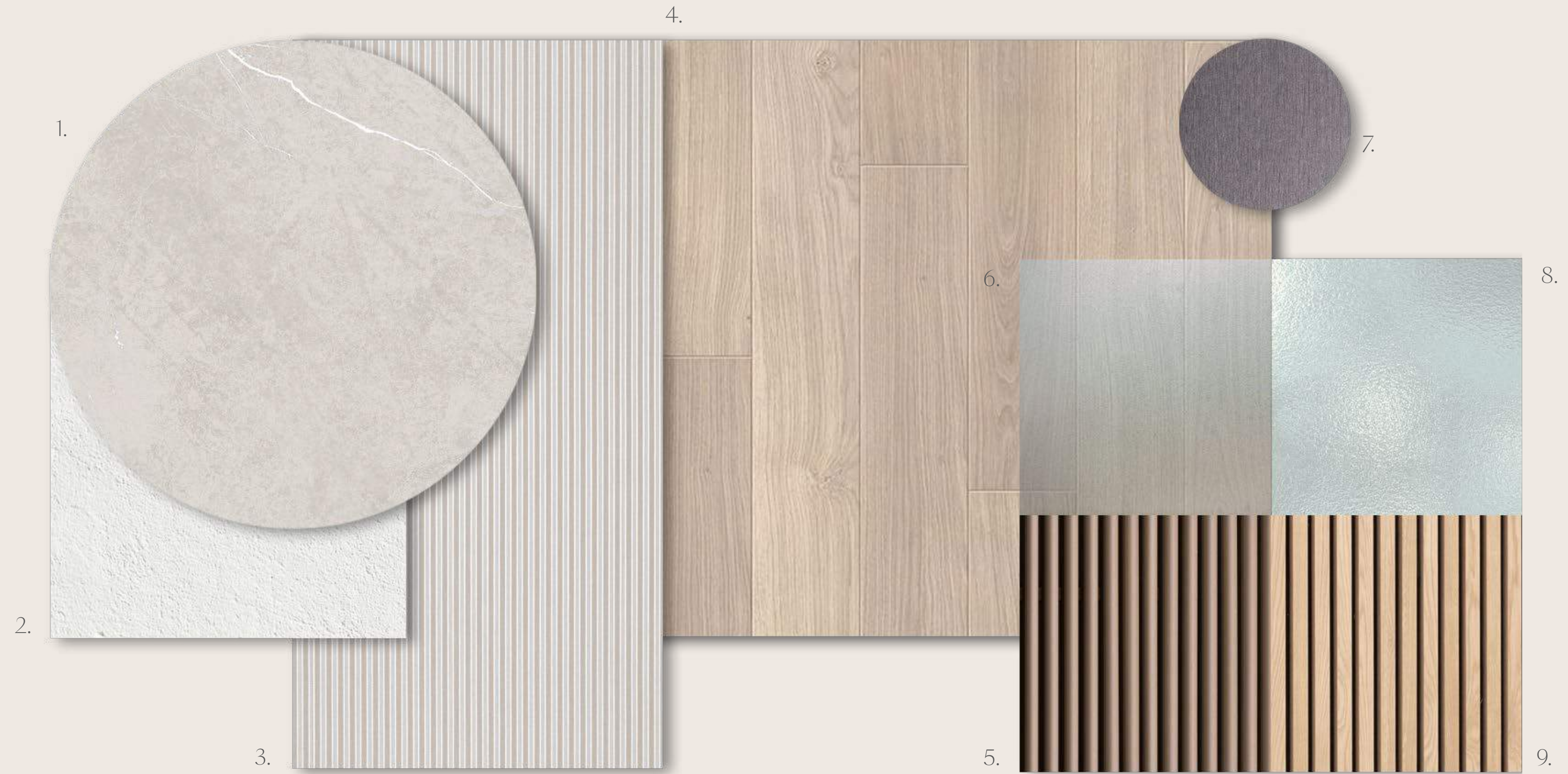
Timeless



Prestige

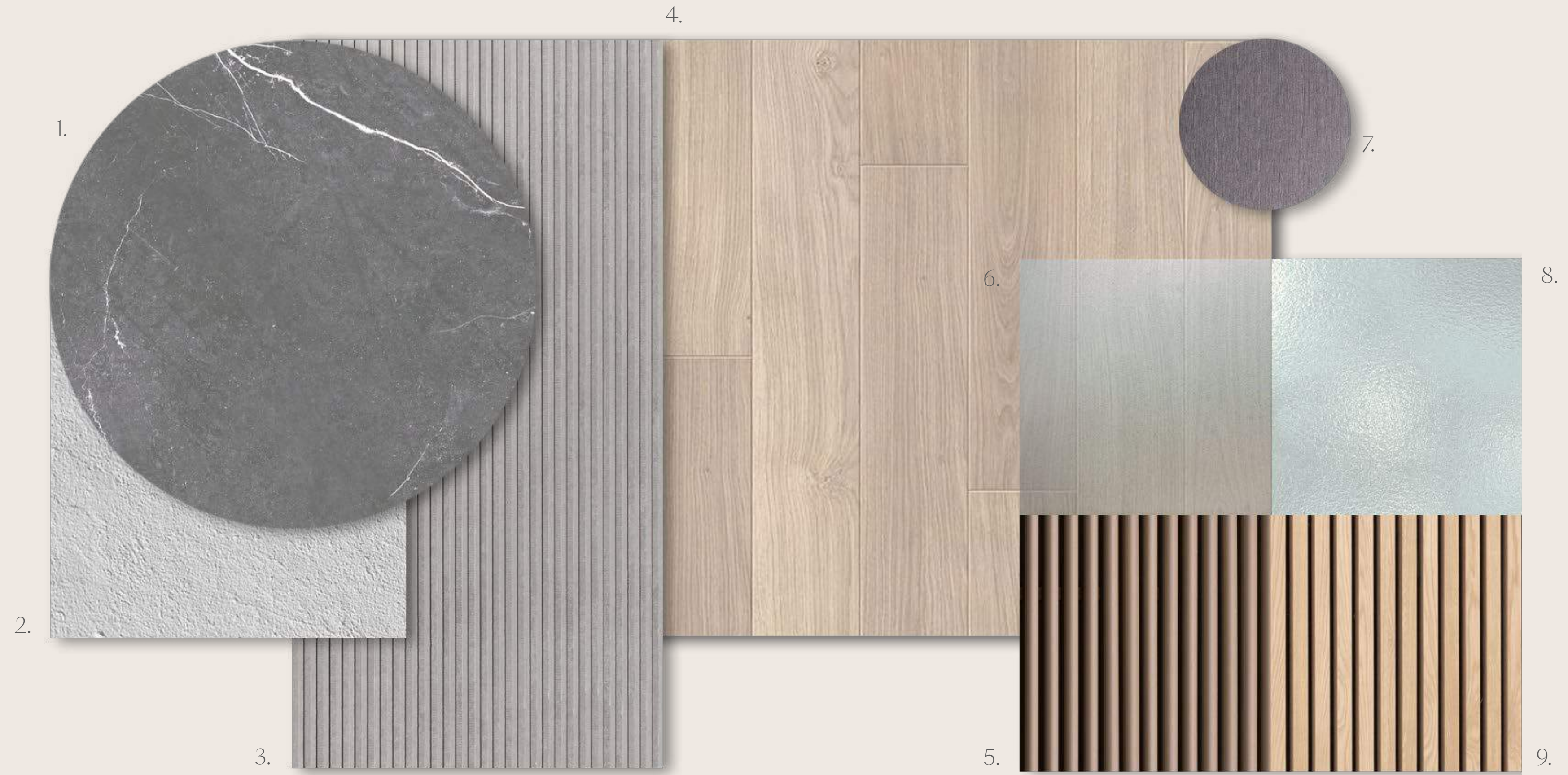
EXTERIOR FACADE MATERIALS TIMELESS

1. Stone Cladding
2. Render Paint
3. Textured Stone Cladding
4. Wood Effect Panels
5. Wood Effect Shutters
6. High Performance Glass
7. Metal Sheets
8. Glass Balustrade
9. Wood Effect Louvers



EXTERIOR FACADE MATERIALS PRESTIGE

- 1. Stone Cladding
- 2. Render Paint
- 3. Textured Stone Cladding
- 4. Wood Effect Panels
- 5. Wood Effect Shutters
- 6. High Performance Glass
- 7. Metal Sheets
- 8. Glass Balustrade
- 9. Wood Effect Louvers



TAILORED TO YOUR TASTES

Inside the homes, a selection of interior palettes features rich, natural materials, including an array of veined marbles, carved timber, and charismatic metals, weave throughout the mansions, bestowing timeless, thoughtful elegance.



Pearl



Onyx

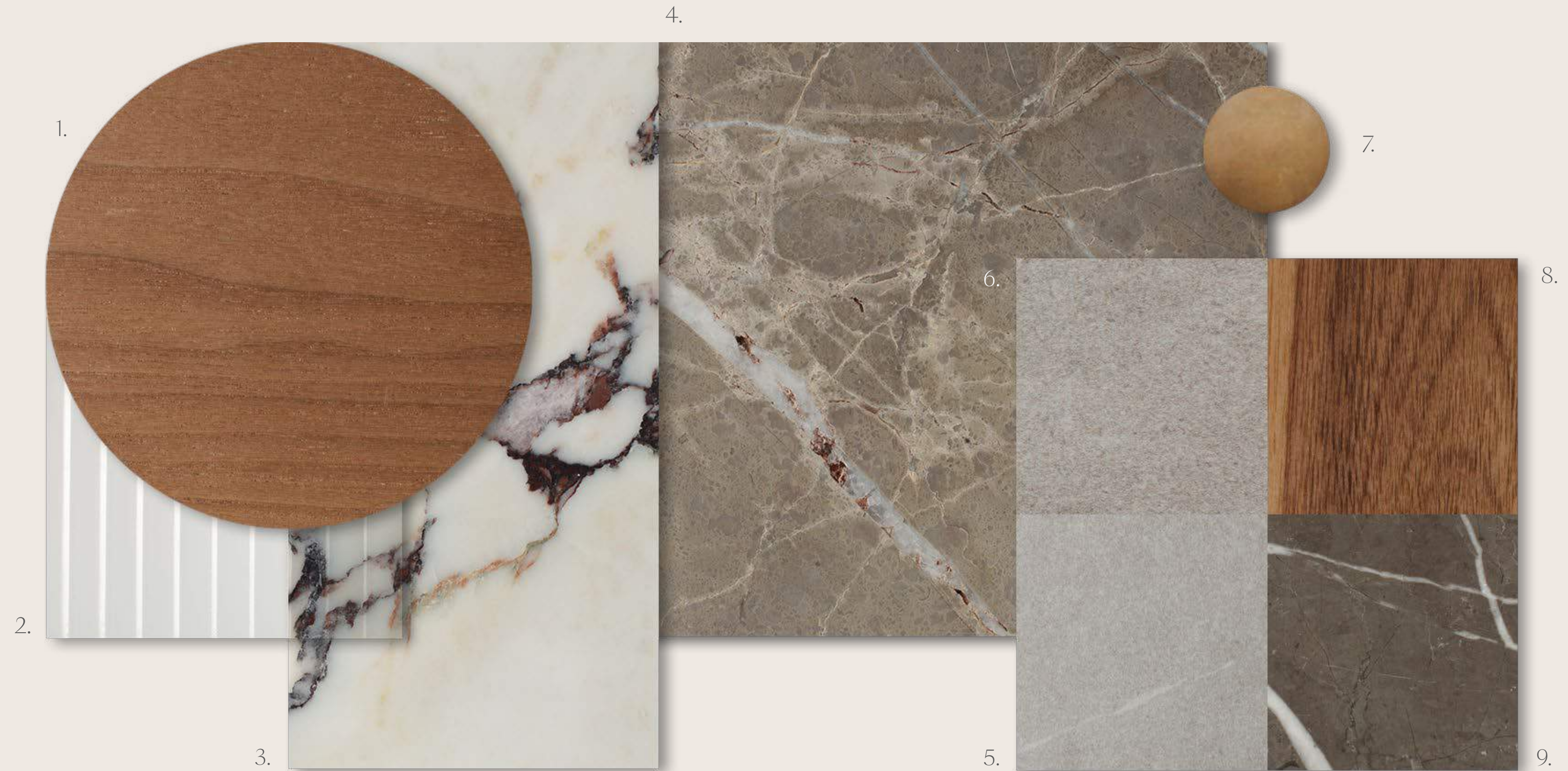
INTERIOR MATERIALS MAIA, IRIS PEARL

1. Kitchen and Wardrobe Veneer
2. Clear Fluted Glass
3. Kitchen Island Marble
4. Marble General Flooring and Master Bathroom
5. Secondary Bathroom Porcelain Floor Tiles
6. Secondary Bathroom Porcelain Wall Tiles
7. General Metal Accent
8. Bedroom Wood Flooring
9. Marble Vanity and Feature Wall



INTERIOR MATERIALS MAIA, IRIS ONYX

1. Kitchen and Wardrobe Veneer
2. Clear Fluted Glass
3. Kitchen Island Marble
4. Marble General Flooring and Master Bathroom
5. Secondary Bathroom Porcelain Floor Tiles
6. Secondary Bathroom Porcelain Wall Tiles
7. General Metal Accent
8. Bedroom Wood Flooring
9. Marble Vanity and Feature Wall



THE COLLECTION

MAIA















M A I A

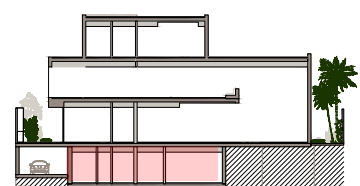
TYPE 1

Amenities

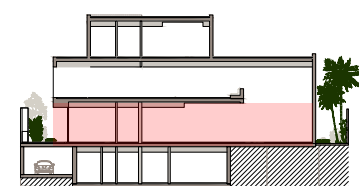
- Double Height Entry
- Double Height Spaces
- Private Home Elevator
- Underground Car Gallery
- Formal Living Area
- Two Family Living Areas
- Guest Suite
- His & Hers Walk in Closets
- Nanny Room
- Driver's Room
- Maid's Room
- Sunken Garden

Internal Area	725 sqm / 7,804 sqft
Balcony/Terrace	68 sqm / 729 sqft
Garage	199 sqm / 2,139 sqft
Total Area	991 sqm / 10,672 sqft

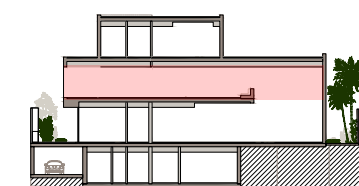
BASEMENT
375 sqm / 4,040 sqft



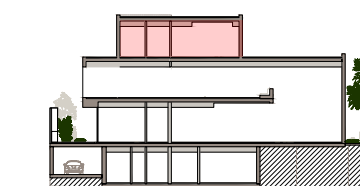
GROUND FLOOR
265 sqm / 2,850 sqft



FIRST FLOOR
351 sqm / 3,782 sqft



ROOFTOP



M A I A

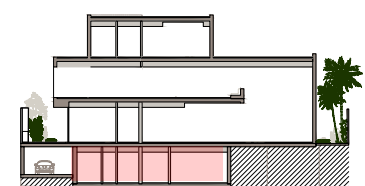
TYPE 2

Amenities

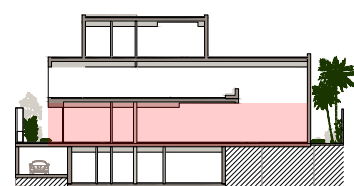
- Double Height Entry
- Double Height Spaces
- Private Home Elevator
- Underground Car Gallery
- Formal Living Area
- Two Family Living Areas
- Majlis
- His & Hers Walk in Closets
- Nanny Room
- Driver's Room
- Maid's Room
- Sunken Garden

Internal Area	725 sqm / 7,804 sqft
Balcony/Terrace	68 sqm / 729 sqft
Garage	199 sqm / 2,139 sqft
Total Area	991 sqm / 10,672 sqft

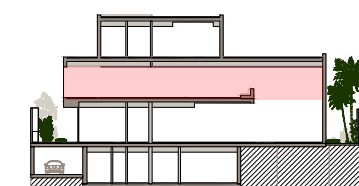
BASEMENT
375 sqm / 4,040 sqft



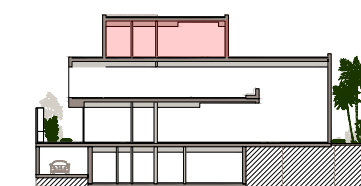
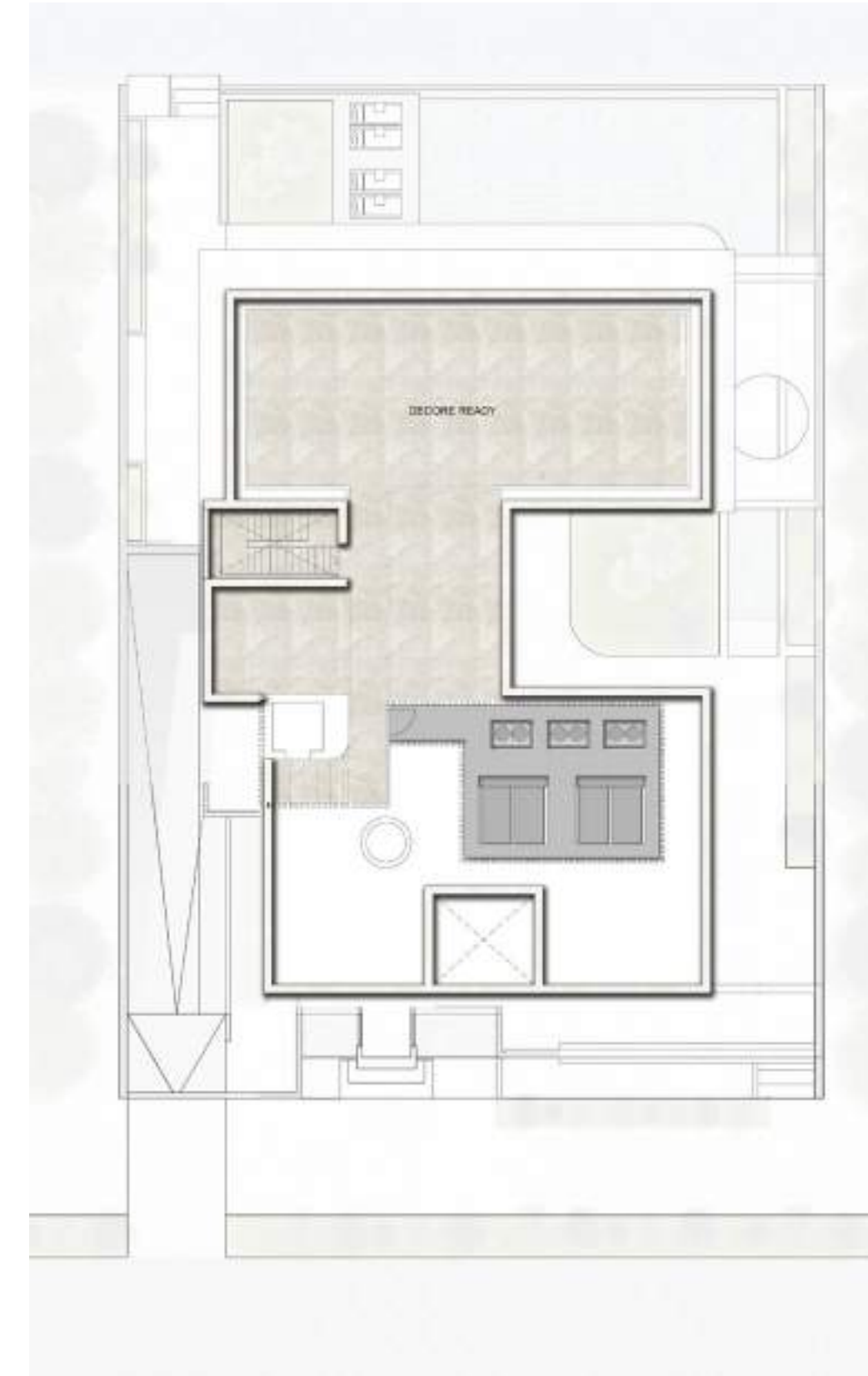
GROUND FLOOR
265 sqm / 2,850 sqft



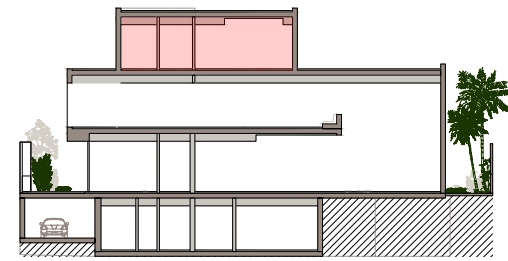
FIRST FLOOR
351 sqm / 3,782 sqft



ROOFTOP



ROOF



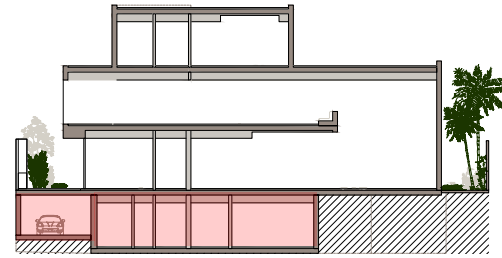
OPTION 1 - WELL-BEING



OPTION 2 - ENTERTAINMENT



BASEMENT



OPTION 1 - WELL-BEING
375 sqm / 4,040 sqft



OPTION 2 - ENTERTAINMENT
375 sqm / 4,040 sqft







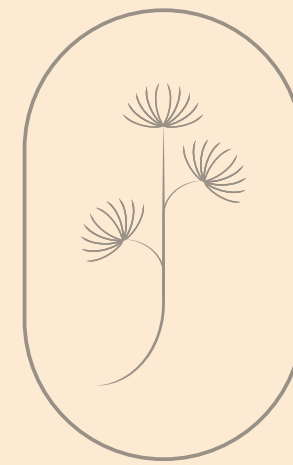








IRIS















IRIS

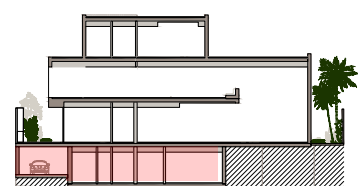
TYPE 1

Amenities

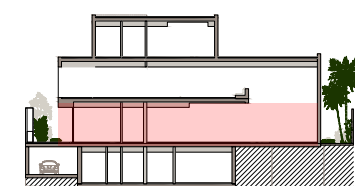
- Double Height Entry
- Double Height Spaces
- Private Home Elevator
- Underground Car Gallery
- Formal Living Area
- Two Family Living Areas
- Guest Suite
- His & Hers Walk in Closets
- Driver's Room
- Maid's Room

Internal Area	630 sqm / 6,777 sqft
Balcony/Terrace	47 sqm / 508 sqft
Garage	284 sqm / 3,059 sqft
Total Area	961 sqm / 10,344 sqft

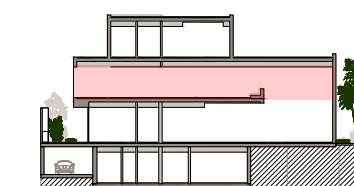
BASEMENT
437 sqm / 4,704 sqft



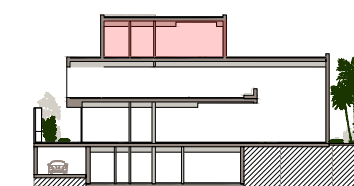
GROUND FLOOR
250 sqm / 2,689 sqft



FIRST FLOOR
274 sqm / 2,952 sqft



SECOND FLOOR - ROOFTOP



IRIS

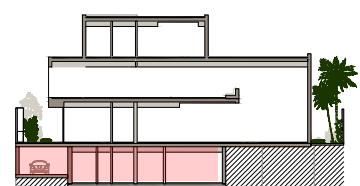
TYPE 2

Amenities

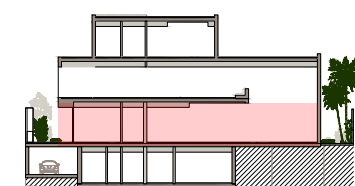
- Double Height Entry
- Double Height Spaces
- Private Home Elevator
- Underground Car Gallery
- Formal Living Area
- Two Family Living Areas
- Majlis
- His & Hers Walk in Closets
- Driver's Room
- Maid's Room

Internal Area	630 sqm / 6,777 sqft
Balcony/Terrace	47 sqm / 508 sqft
Garage	284 sqm / 3,059 sqft
Total Area	961 sqm / 10,344 sqft

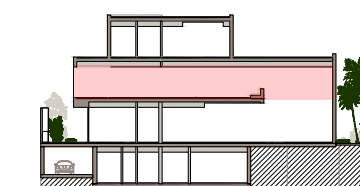
BASEMENT
437 sqm / 4,704 sqft



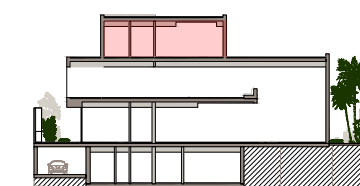
GROUND FLOOR
250 sqm / 2,689 sqft



FIRST FLOOR
274 sqm / 2,952 sqft



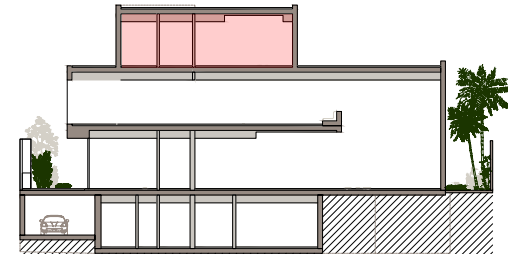
SECOND FLOOR - ROOFTOP



IRIS

UPGRADES

ROOF



OPTION 1 - ENTERTAINMENT



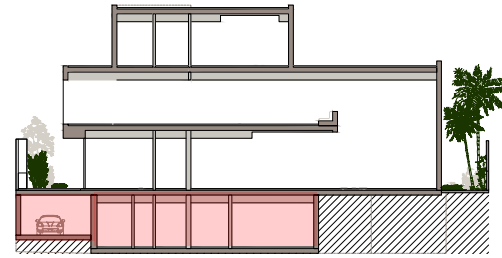
OPTION 2 - WELL-BEING



IRIS

UPGRADES

BASEMENT



OPTION 1 - ENTERTAINMENT
437 sqm / 4,704 sqft



OPTION 2 - WELL-BEING
437 sqm / 4,704 sqft













ELYSIAN MANSIONS

ELYSIAN MANSIONS

HILLTOP

A VIEW FROM THE TOP

Distinctive and expertly crafted, the Hilltop residences stand grandly at the peak of Elysian Mansions. Overlooking the whole of the development, the Mansions feature stunning vistas of the impressive estate gardens.

Owners can choose between two distinct material palettes for the exterior and interior, with both the landscaping and interior layouts tailored to your specifications.





TILAL AL GHAF MASTERPLAN



ELYSIAN
MANSIONS

- | | | | | | |
|------------------|-------------------------------|----------------------|-----------------------|---------------------------|------------------------------|
| Sandy Beach | Central Park | Indoor & Outdoor Gym | Children's Play Areas | International School | Daycare |
| Beach Cabanas | 18km Walking & Cycling Trails | Basketball Court | Water Splash Park | Beach Restaurants & Cafés | Holistic Healthcare Facility |
| Beach Volleyball | Table Tennis | Outdoor Cinema | Swimming Pools | Community Town Centre | Mosques |
| Water Sports | Tennis Court | Skate Park | Trampoline Parks | BBQ Stations | Retail Hub |



AN OASIS OF REFINED LIVING

Elysian Mansions is an exclusive, residential waterfront enclave abutting the lagoon of Tlal Al Ghaf. Inspired by the Elysian Fields of Greek mythology, this hallmark luxury neighbourhood conceived by Majid Al Futtaim offers the most distinctive and thoughtful residences to date.

These bespoke, expertly crafted mansions are tailored to your tastes, with generous spaces, stunning finishes, and expansive pockets of natural beauty woven throughout the homes.



DISCOVER
YOUR
PERSONAL
PARADISE





QUIETLY SOPHISTICATED

INTIMACY & HOSPITALITY



CRAFTED WITH DISTINCTION

Led by contemporary architecture, yet rooted in classic home design, Elysian Mansions offers smart, technology-enabled homes with uncompromising aesthetics.





KEYPLAN & PUBLIC REALM



ELYSIAN
MANSIONS



Lagoonside

- 01. Main Entrance
- 02. Promenade
- 03. The Pavilion
- 04. Terraced Gardens



Hilltop

- 05. The Orchards
- 06. The Alle
- 07. The Dining Room
- 08. The Clock Tower
- 09. The Kitchen Gardens
- 10. The Water Gardens
- 11. Sikka Gardens
- 12. The Forest Walk



Park Lane

- 13. The Tuileries
- 14. The Maze Garden
- 15. The Grand Lawn
- 16. The library of trees
- 17. The Beach Access
- 18. The Private Beach
- 19. Stargazing Room
- 20. Parking Area

- 21. Informal Lawn
- 22. Plazas



A BESPOKE SANCTUARY



Grand double height entry



Access to exclusive beach & recreational lagoon



Secured gated community



Luxury marble flooring



Largest exclusive park in Tital Al Ghaf



Stone cladded exterior facades



Emphasis on the indoor/outdoor relationship



Expansive terraces & outdoor spaces with upgrade options



Triple-height courtyards



Bespoke ergonomic & biophilic architecture



European kitchens with integrated appliances



Spacious walk-in closets with accessorized wardrobes



Car galleries for 6 to 8 cars



Elevator in each mansion



A selection of bespoke upgrades to suit your needs



Premium wooden flooring in bedrooms

TAILORED TO YOUR TASTES

A selection of facade palettes, ranging from deep, moody stones to warm textured neutrals, captures the individual grandeur of each mansion—creating a bespoke and private oasis all your own.



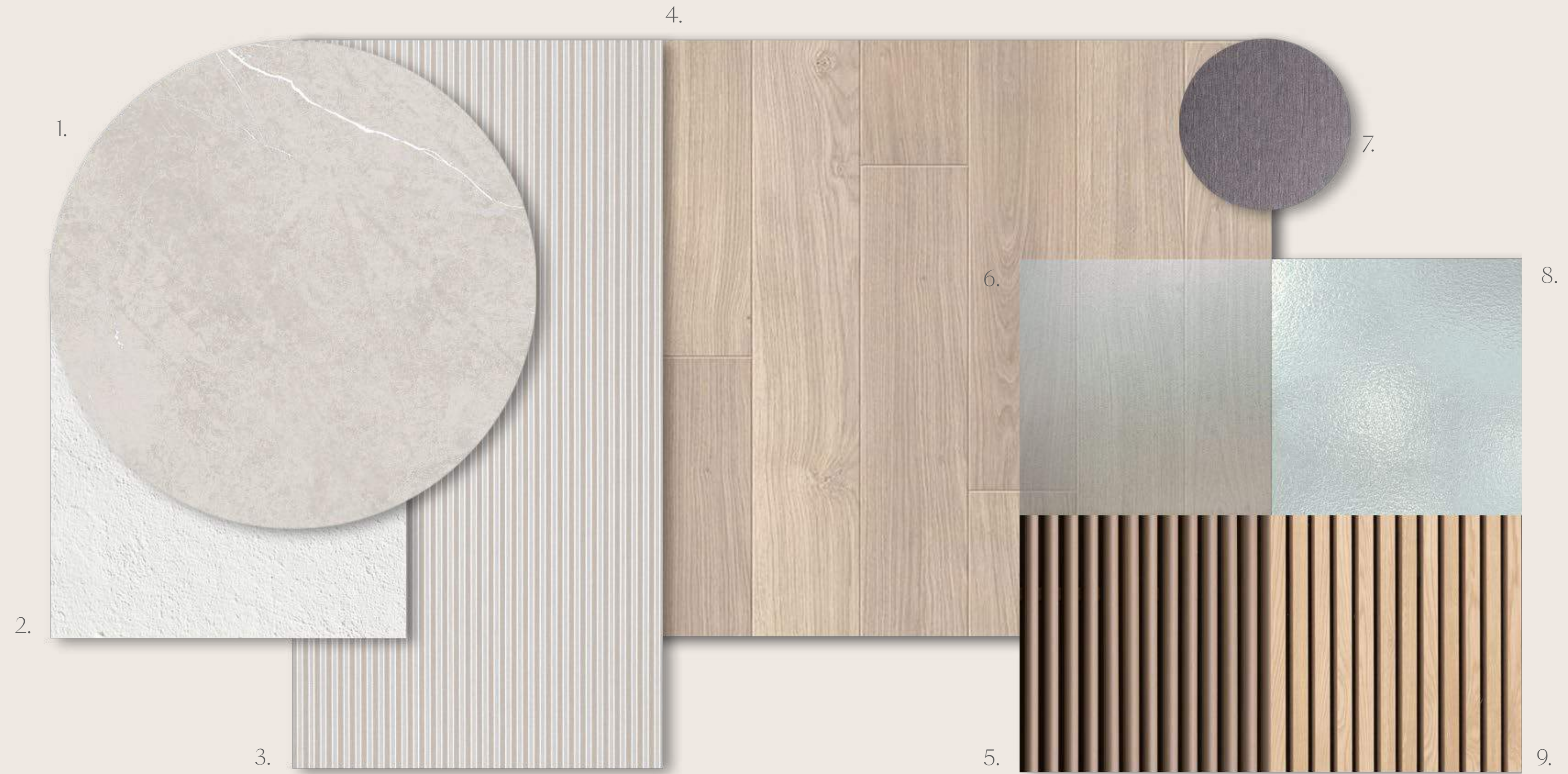
Timeless



Prestige

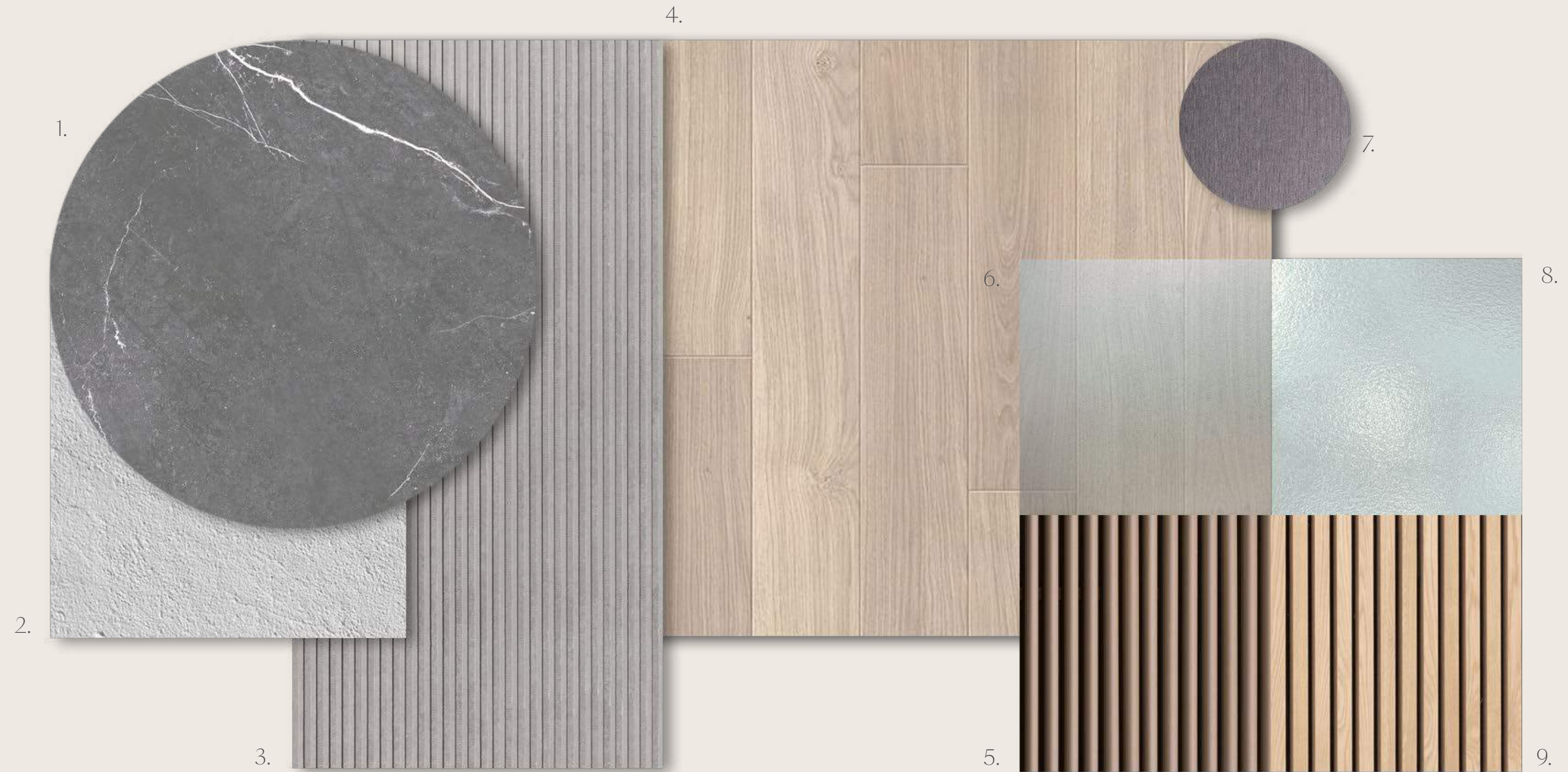
EXTERIOR FACADE MATERIALS TIMELESS

-
1. Stone Cladding
 2. Render Paint
 3. Textured Stone Cladding
 4. Wood Effect Panels
 5. Wood Effect Shutters
 6. High Performance Glass
 7. Metal Sheets
 8. Glass Balustrade
 9. Wood Effect Louvers
-



EXTERIOR FACADE MATERIALS PRESTIGE

-
1. Stone Cladding
 2. Render Paint
 3. Textured Stone Cladding
 4. Wood Effect Panels
 5. Wood Effect Shutters
 6. High Performance Glass
 7. Metal Sheets
 8. Glass Balustrade
 9. Wood Effect Louvers
-



TAILORED TO YOUR TASTES

Inside the homes, a selection of interior palettes features rich, natural materials, including an array of veined marbles, carved timber, and charismatic metals, weave throughout the mansions, bestowing timeless, thoughtful elegance.



Pearl



Onyx

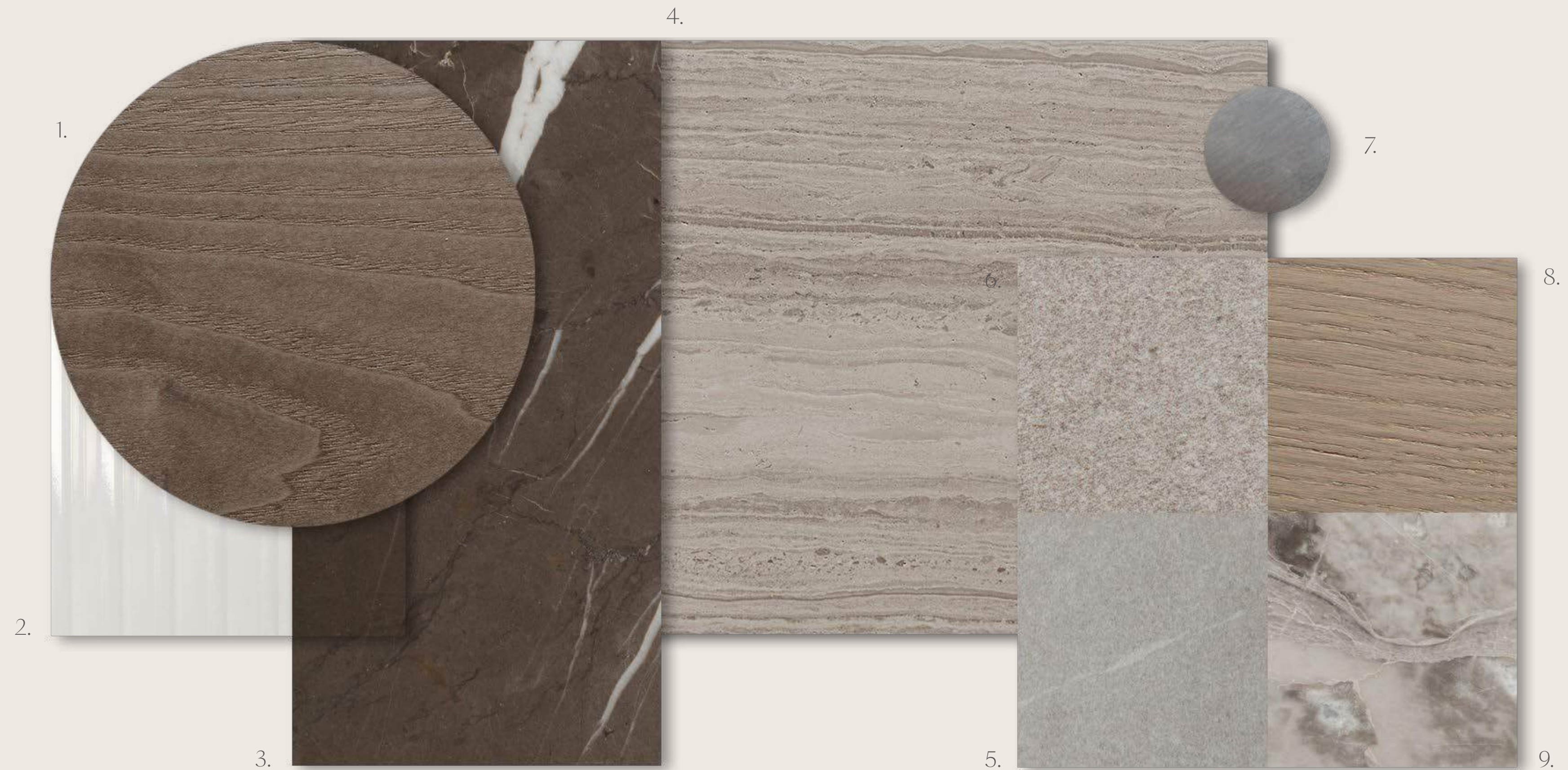
INTERIOR MATERIALS MUSE, ARTIS, LEIA PEARL

1. Kitchen and Wardrobe Veneer
2. Clear Fluted Glass
3. Kitchen Island Marble
4. Marble General Flooring and Master Bathroom
5. Secondary Bathroom Porcelain Floor Tiles
6. Secondary Bathroom Porcelain Wall Tiles
7. General Metal Accent
8. Bedroom Wood Flooring
9. Marble Vanity and Feature Wall



INTERIOR MATERIALS MUSE, ARTIS, LEIA ONYX

1. Kitchen and Wardrobe Veneer
2. Clear Fluted Glass
3. Kitchen Island Marble
4. Marble General Flooring and Master Bathroom
5. Secondary Bathroom Porcelain Floor Tiles
6. Secondary Bathroom Porcelain Wall Tiles
7. General Metal Accent
8. Bedroom Wood Flooring
9. Marble Vanity and Feature Wall



THE COLLECTION

ARTIS











ARTIS

TYPE 1 - HILLTOP

Amenities

Double Height Entry
Double Height Spaces
Private Home Elevator
Underground Car Gallery

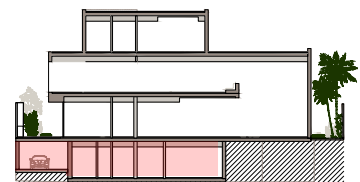
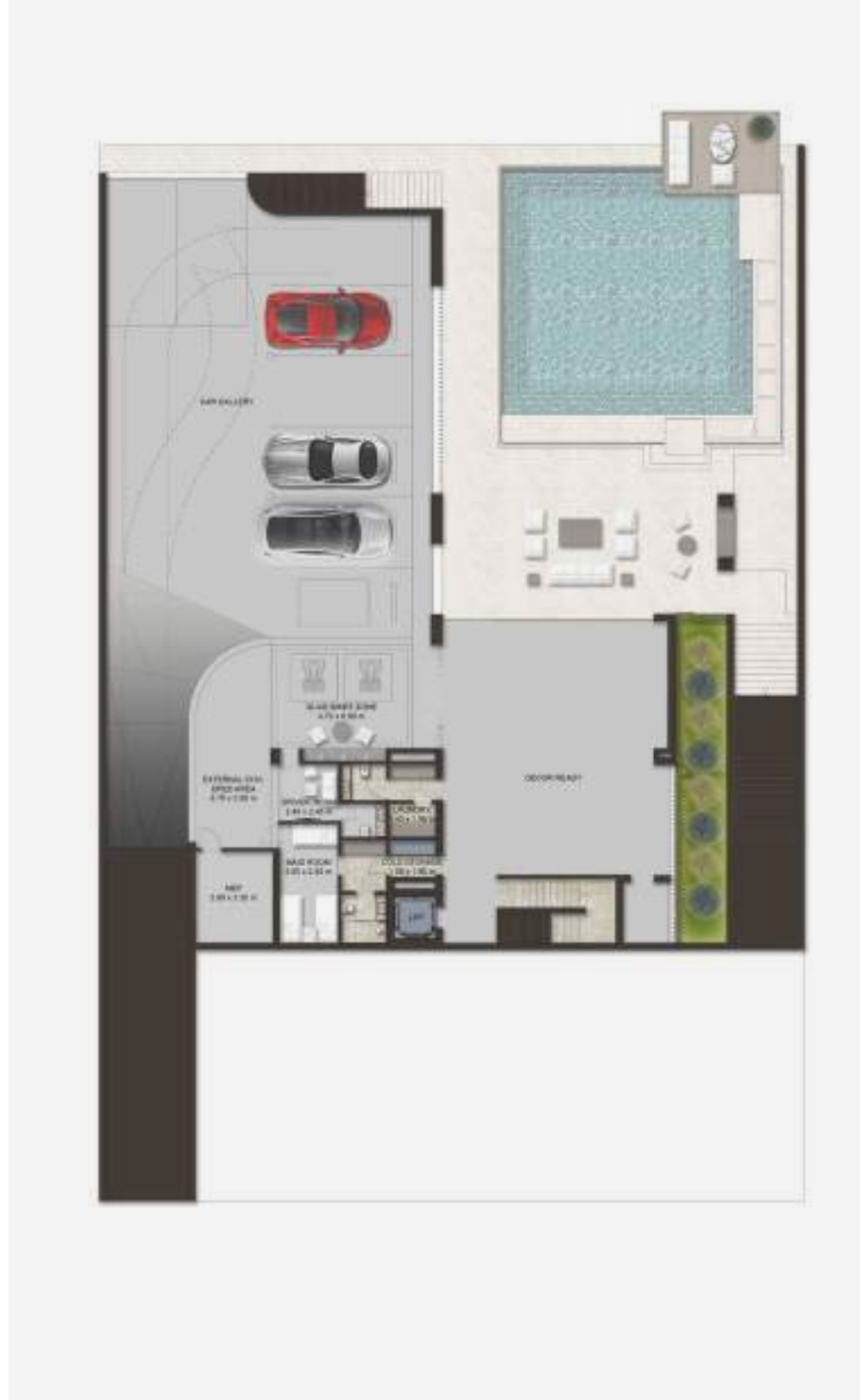
Formal Living Area
Two Family Living Areas
Show Kitchen
Closed Kitchen

Butler Space
Guest Suite
Home Office
His & Hers Walk in Closets

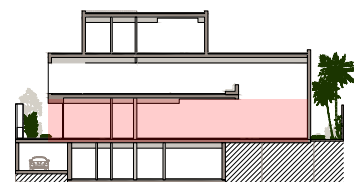
Nanny Room
Maid's Room
Driver's Room

Internal Area	1,006 sqm / 10,833 sqft
Balcony/Terrace	298 sqm / 3,204 sqft
Garage	364 sqm / 3,913 sqft
Total Area	1,668 sqm / 17,950 sqft

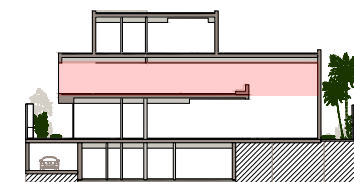
BASEMENT
580 sqm / 6,241 sqft



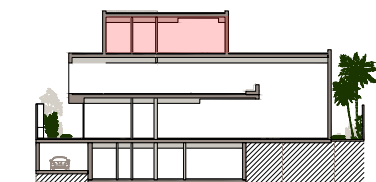
GROUND FLOOR
352 sqm / 3,784 sqft



FIRST FLOOR
439 sqm / 4,723 sqft



SECOND FLOOR - ROOFTOP
297 sqm / 3,202 sqft



ARTIS

TYPE 2 - HILLTOP

Amenities

Double Height Entry
Double Height Spaces
Private Home Elevator
Underground Car Gallery

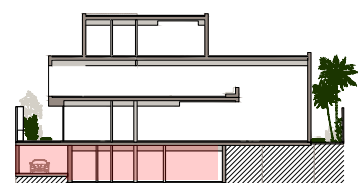
Formal Living Area
Two Family Living Areas
Show Kitchen
Closed Kitchen

Butler Space
Guest Suite
Home Office
His & Hers Walk in Closets

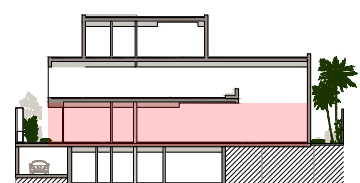
Nanny Room
Driver's Room
Mega Master Bedroom
Maid's Room

Internal Area	1,006 sqm / 10,833 sqft
Balcony/Terrace	298 sqm / 3,204 sqft
Garage	364 sqm / 3,913 sqft
Total Area	1,668 sqm / 17,950 sqft

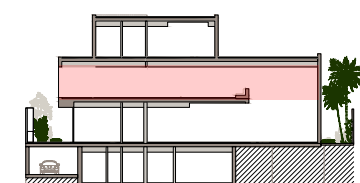
BASEMENT
580 sqm / 6,241 sqft



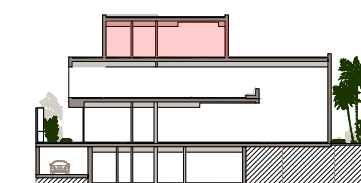
GROUND FLOOR
352 sqm / 3,784 sqft



FIRST FLOOR
439 sqm / 4,723 sqft



SECOND FLOOR - ROOFTOP
297 sqm / 3,202 sqft



ARTIS

TYPE 3 - HILLTOP

Amenities

Double Height Entry
Double Height Spaces
Private Home Elevator
Underground Car Gallery

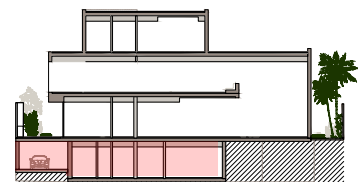
Formal Living Area
Two Family Living Areas
Show Kitchen
Closed Kitchen

Butler Space
Majlis
Home Office
His & Hers Walk in Closets

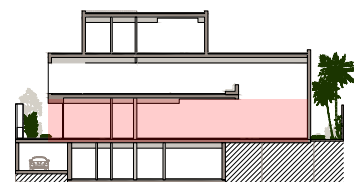
Nanny Room
Maid's Room
Driver's Room

Internal Area	1,006 sqm / 10,833 sqft
Balcony/Terrace	298 sqm / 3,204 sqft
Garage	364 sqm / 3,913 sqft
Total Area	1,668 sqm / 17,950 sqft

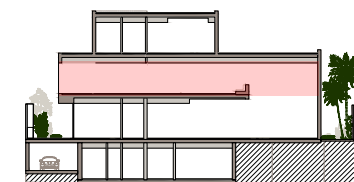
BASEMENT
580 sqm / 6,241 sqft



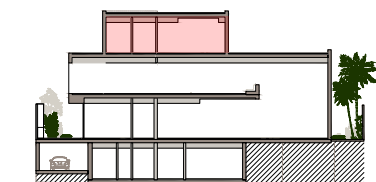
GROUND FLOOR
352 sqm / 3,784 sqft



FIRST FLOOR
439 sqm / 4,723 sqft



SECOND FLOOR - ROOFTOP
297 sqm / 3,202 sqft



ARTIS

TYPE 4 - HILLTOP

Amenities

Double Height Entry
Double Height Spaces
Private Home Elevator
Underground Car Gallery

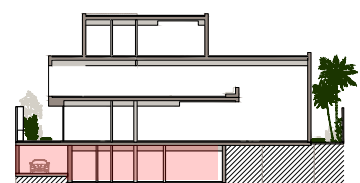
Formal Living Area
Two Family Living Areas
Show Kitchen
Closed Kitchen

Butler Space
Majlis
Home Office
His & Hers Walk in Closets

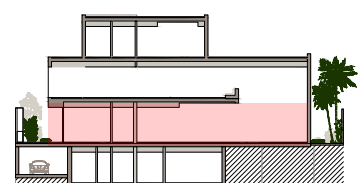
Nanny Room
Driver's Room
Maid's Room
Mega Master Bedroom

Internal Area	1,006 sqm / 10,833 sqft
Balcony/Terrace	298 sqm / 3,204 sqft
Garage	364 sqm / 3,913 sqft
Total Area	1,668 sqm / 17,950 sqft

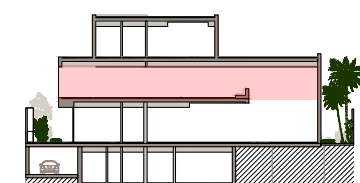
BASEMENT
580 sqm / 6,241 sqft



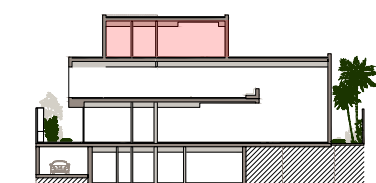
GROUND FLOOR
352 sqm / 3,784 sqft



FIRST FLOOR
439 sqm / 4,723 sqft



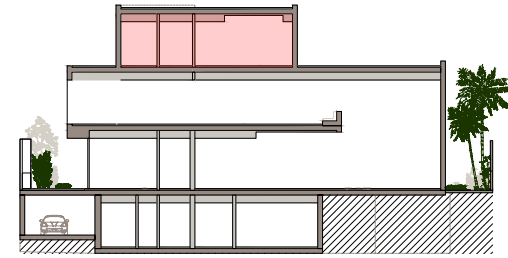
SECOND FLOOR - ROOFTOP
297 sqm / 3,202 sqft



ARTIS

UPGRADES TYPE 1 & 2

ROOF



OPTION 1 - WELL-BEING
297 sqm / 3,202 sqft



OPTION 2 - SKY SUITE
297 sqm / 3,202 sqft



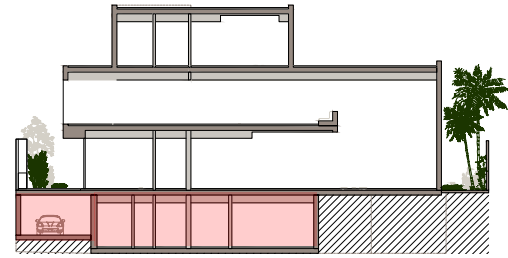
OPTION 3 - ENTERTAINMENT
297 sqm / 3,202 sqft



ARTIS

UPGRADES TYPE 1 & 2

BASEMENT



OPTION 1 - WELL-BEING
580 sqm / 6,241 sqft



OPTION 2 - ENTERTAINMENT
580 sqm / 6,241 sqft















ELYSIAN MANSIONS

ELYSIAN
MANSIONS

LAGOON
SIDE

A RENAISSANCE IN WATERFRONT LIVING

Set against the backdrop of a pristine lagoon stand the Lagoonside homes, the pinnacle of the Elysian Mansions. The Lagoonside residences are a renaissance in waterfront living, the only Mansions featuring private, direct access to the recreational Lagoon Al Ghaf.

Owners can choose between a number of distinct home types for these premium plots, with interior, exterior, and landscape designs tailored to your specifications.





Al Fey Road

Hessa Road

TILAL AL GHAF MASTERPLAN



ELYSIAN MANSIONS

- | | | | | | |
|------------------|-------------------------------|----------------------|-----------------------|---------------------------|------------------------------|
| Sandy Beach | Central Park | Indoor & Outdoor Gym | Children's Play Areas | International School | Daycare |
| Beach Cabanas | 18km Walking & Cycling Trails | Basketball Court | Water Splash Park | Beach Restaurants & Cafés | Holistic Healthcare Facility |
| Beach Volleyball | Table Tennis | Outdoor Cinema | Swimming Pools | Community Town Centre | Mosques |
| Water Sports | Tennis Court | Skate Park | Trampoline Parks | BBQ Stations | Retail Hub |



AN OASIS OF REFINED LIVING

Elysian Mansions is an exclusive, residential waterfront enclave abutting the lagoon of Tlal Al Ghaf. Inspired by the Elysian Fields of Greek mythology, this hallmark luxury neighbourhood conceived by Majid Al Futtaim offers the most distinctive and thoughtful residences to date.

These bespoke, expertly crafted mansions are tailored to your tastes, with generous spaces, stunning finishes, and expansive pockets of natural beauty woven throughout the homes.



DISCOVER
YOUR
PERSONAL
PARADISE





QUIETLY
SOPHISTICATED

INTIMACY & HOSPITALITY



CRAFTED WITH DISTINCTION

Led by contemporary architecture, yet rooted in classic home design, Elysian Mansions offers smart, technology-enabled homes with uncompromising aesthetics.





KEYPLAN & PUBLIC REALM



ELYSIAN
MANSIONS



Lagoonside

- 01. Main Entrance
- 02. Promenade
- 03. The Pavilion
- 04. Terraced Gardens



Hilltop

- 05. The Orchards
- 06. The Alle
- 07. The Dining Room
- 08. The Clock Tower
- 09. The Kitchen Gardens
- 10. The Water Gardens
- 11. Sikka Gardens
- 12. The Forest Walk



Park Lane

- 13. The Tuileries
- 14. The Maze Garden
- 15. The Grand Lawn
- 16. The library of trees
- 17. The Beach Access
- 18. The Private Beach
- 19. Stargazing Room
- 20. Parking Area

- 21. Informal Lawn
- 22. Plazas



A BESPOKE SANCTUARY



Grand double height entry



Access to exclusive beach & recreational lagoon



Secured gated community



Luxury marble flooring



Largest exclusive park in Tital Al Ghaf



Stone cladded exterior facades



Emphasis on the indoor/outdoor relationship



Expansive terraces & outdoor spaces with upgrade options



Triple-height courtyards



Bespoke ergonomic & biophilic architecture



European kitchens with integrated appliances



Spacious walk-in closets with accessorized wardrobes



Car galleries for 6 to 8 cars



Elevator in each mansion



A selection of bespoke upgrades to suit your needs



Premium wooden flooring in bedrooms

TAILORED TO YOUR TASTES

A selection of facade palettes, ranging from deep, moody stones to warm textured neutrals, captures the individual grandeur of each mansion—creating a bespoke and private oasis all your own.



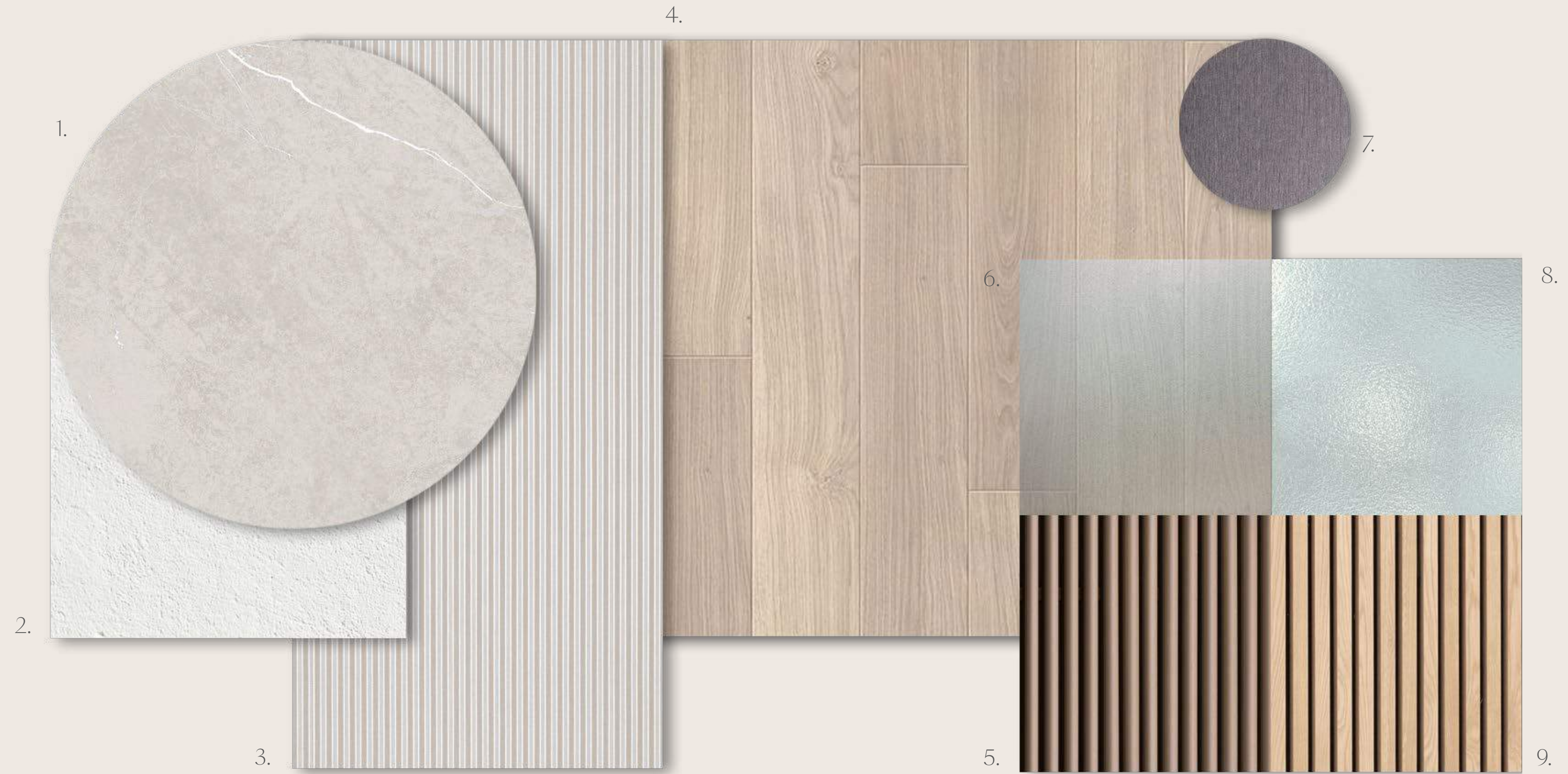
Timeless



Prestige

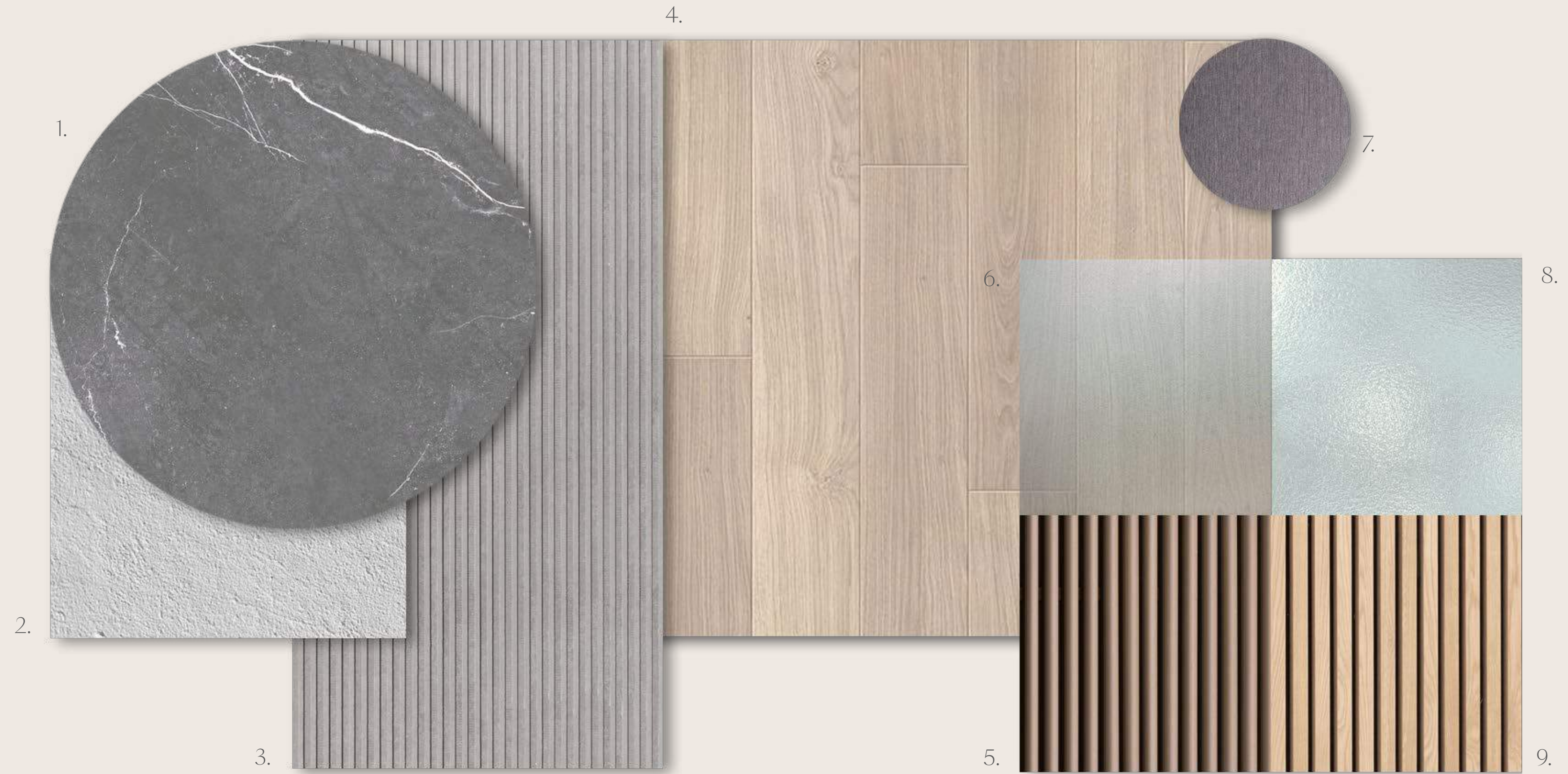
EXTERIOR FACADE MATERIALS TIMELESS

-
1. Stone Cladding
 2. Render Paint
 3. Textured Stone Cladding
 4. Wood Effect Panels
 5. Wood Effect Shutters
 6. High Performance Glass
 7. Metal Sheets
 8. Glass Balustrade
 9. Wood Effect Louvers
-



EXTERIOR FACADE MATERIALS PRESTIGE

-
1. Stone Cladding
 2. Render Paint
 3. Textured Stone Cladding
 4. Wood Effect Panels
 5. Wood Effect Shutters
 6. High Performance Glass
 7. Metal Sheets
 8. Glass Balustrade
 9. Wood Effect Louvers
-



TAILORED TO YOUR TASTES

Inside the homes, a selection of interior palettes features rich, natural materials, including an array of veined marbles, carved timber, and charismatic metals, weave throughout the mansions, bestowing timeless, thoughtful elegance.



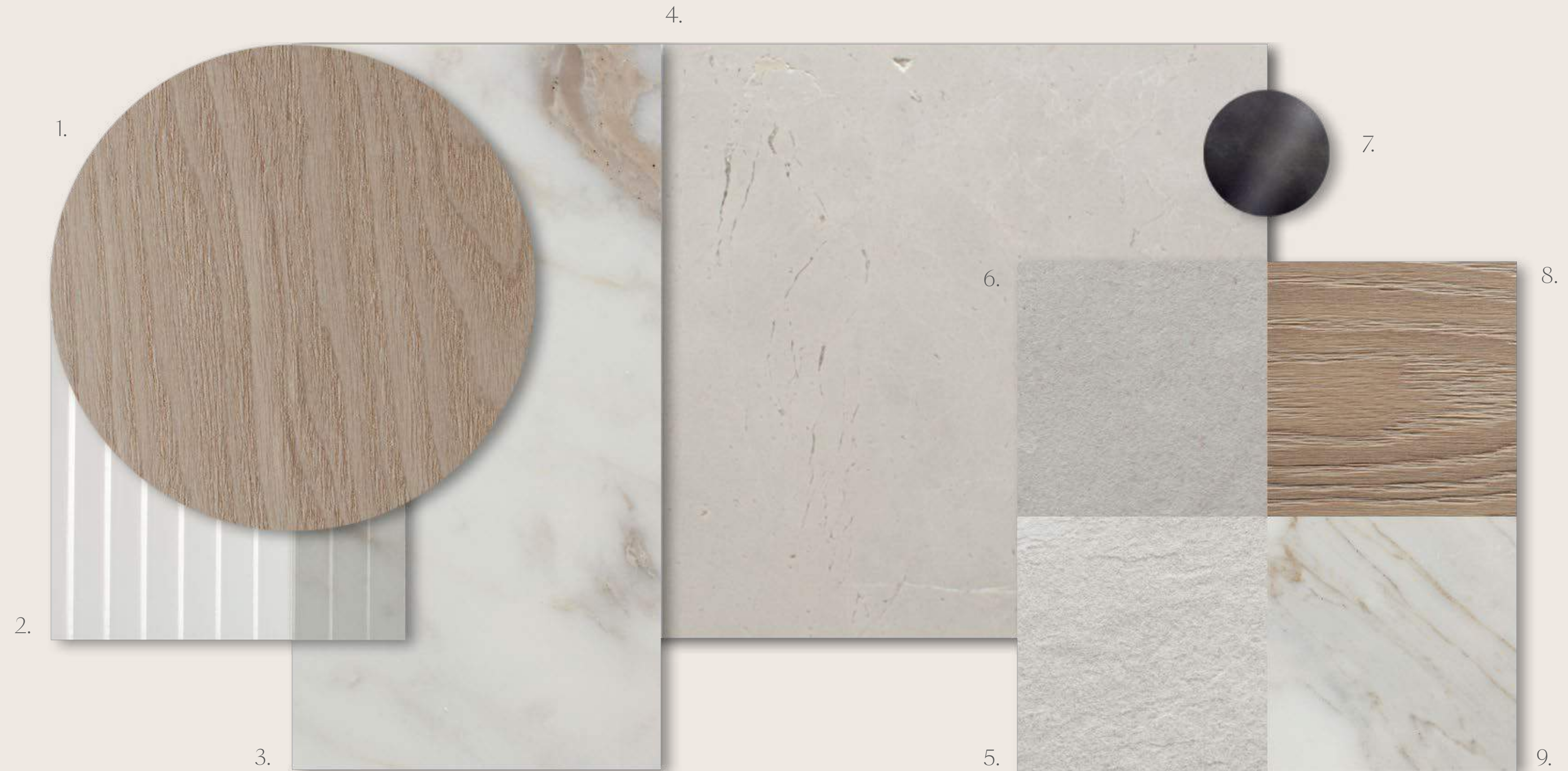
Pearl



Onyx

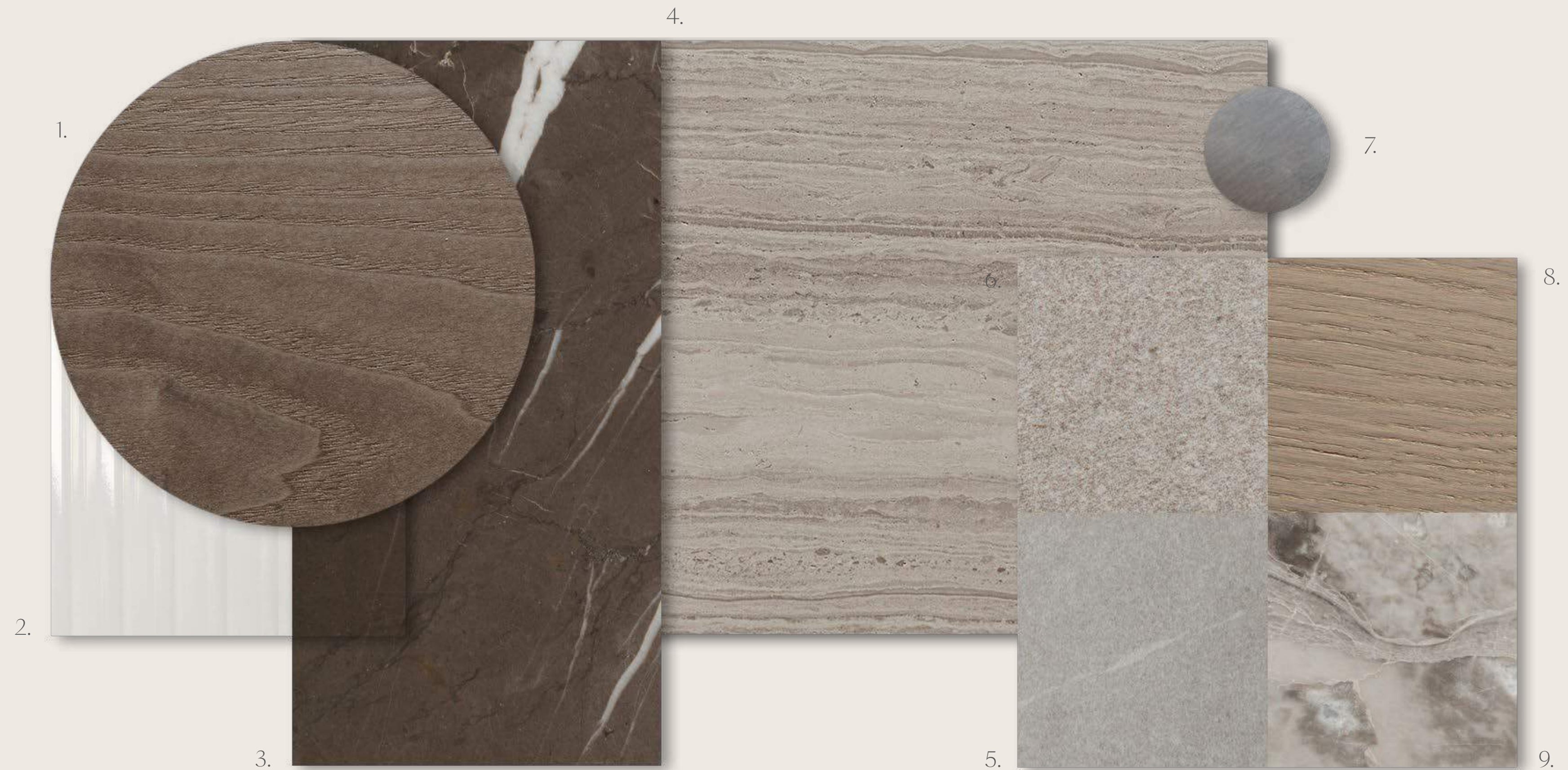
INTERIOR MATERIALS MUSE, ARTIS, LEIA PEARL

1. Kitchen and Wardrobe Veneer
2. Clear Fluted Glass
3. Kitchen Island Marble
4. Marble General Flooring and Master Bathroom
5. Secondary Bathroom Porcelain Floor Tiles
6. Secondary Bathroom Porcelain Wall Tiles
7. General Metal Accent
8. Bedroom Wood Flooring
9. Marble Vanity and Feature Wall



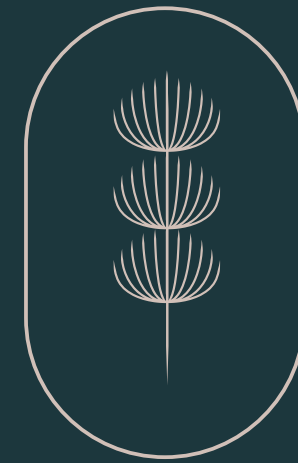
INTERIOR MATERIALS MUSE, ARTIS, LEIA ONYX

1. Kitchen and Wardrobe Veneer
2. Clear Fluted Glass
3. Kitchen Island Marble
4. Marble General Flooring and Master Bathroom
5. Secondary Bathroom Porcelain Floor Tiles
6. Secondary Bathroom Porcelain Wall Tiles
7. General Metal Accent
8. Bedroom Wood Flooring
9. Marble Vanity and Feature Wall



THE COLLECTION

MUSE















MUSE

TYPE 1

Amenities

Double Height Entry
Double Height Spaces
Private Home Elevator
Underground Car Gallery

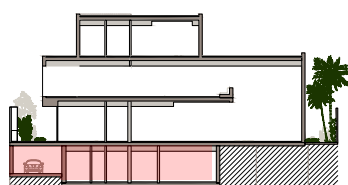
Formal Living Area
Two Family Living Areas
Show Kitchen
Closed Kitchen

Triple Height Sunken Courtyard
Guest Wing
Home Office
His & Hers Walk in Closets

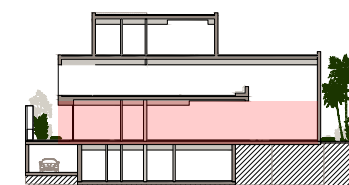
Nanny Room
Maid's Room
Driver's Room

Internal Area	1,093 sqm / 11,765 sqft
Balcony/Terrace	132 sqm / 1,423 sqft
Garage	325 sqm / 3,503 sqft
Total Area	1,551 sqm / 16,691 sqft

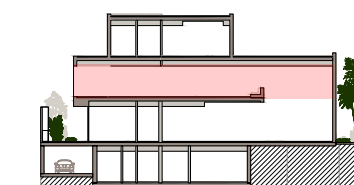
BASEMENT
580 sqm / 6,245 sqft



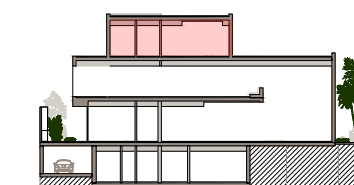
GROUND FLOOR
349 sqm / 3,761 sqft



FIRST FLOOR
403 sqm / 4,338 sqft



SECOND FLOOR - ROOFTOP
218 sqm / 2,347 sqft



MUSE

TYPE 2

Amenities

Double Height Entry
Double Height Spaces
Private Home Elevator
Underground Car Gallery

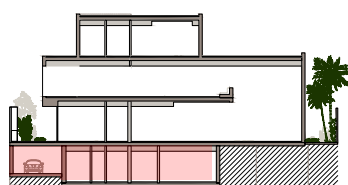
Formal Living Area
Two Family Living Areas
Show Kitchen
Closed Kitchen

Triple Height Sunken Courtyard
Guest Wing
Home Office
His & Hers Walk in Closets

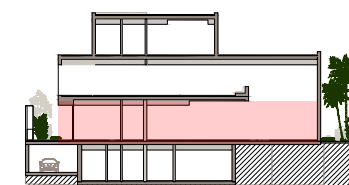
Nanny Room
Maid's Room
Driver's Room
Mega Master Bedroom

Internal Area	1,093 sqm / 11,765 sqft
Balcony/Terrace	132 sqm / 1,423 sqft
Garage	325 sqm / 3,503 sqft
Total Area	1,551 sqm / 16,691 sqft

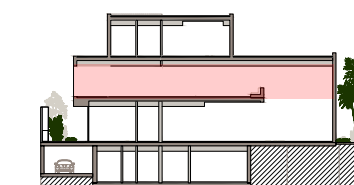
BASEMENT
580 sqm / 6,245 sqft



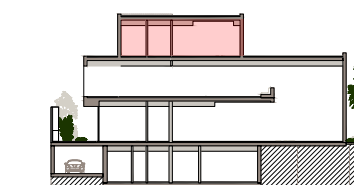
GROUND FLOOR
349 sqm / 3,761 sqft



FIRST FLOOR
403 sqm / 4,338 sqft



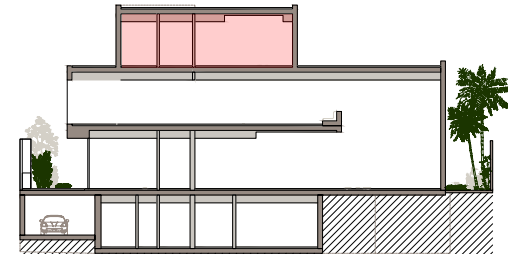
SECOND FLOOR - ROOFTOP
218 sqm / 2,347 sqft



MUSE

UPGRADES

ROOF



OPTION 1 - SKY SUITE
218 sqm / 2,347 sqft



OPTION 2 - WELL-BEING
218 sqm / 2,347 sqft



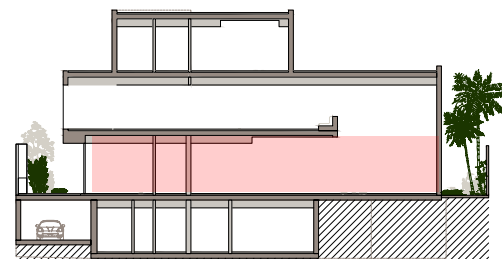
OPTION 3 - ROOF ENTERTAINMENT
218 sqm / 2,347 sqft



MUSE

UPGRADES

GROUND FLOOR



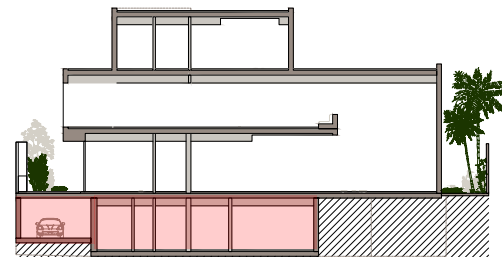
MAJLIS
373 sqm / 4,014 sqft



MUSE

UPGRADES

BASEMENT



OPTION 1 - WELL-BEING
580 sqm / 6,245 sqft



OPTION 2 - MULTIPURPOSE
580 sqm / 6,245 sqft



OPTION 3 - ENTERTAINMENT
580 sqm / 6,245 sqft



















ARTIS







ARTIS

TYPE 1 - LAGOONSIDE

Amenities

Double Height Entry
Double Height Spaces
Private Home Elevator
Underground Car Gallery

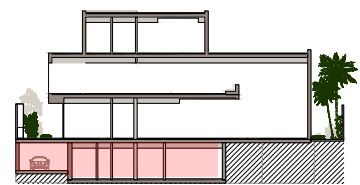
Formal Living Area
Two Family Living Areas
Show Kitchen
Closed Kitchen

Butler Space
Guest Suite
Home Office
His & Hers Walk in Closets

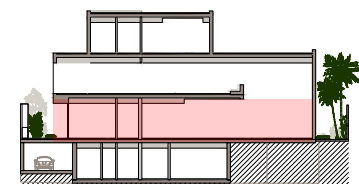
Nanny Room
Maid's Room
Driver's Room

Internal Area	1,005 sqm / 10,821 sqft
Balcony/Terrace	298 sqm / 3,204 sqft
Garage	369 sqm / 3,969 sqft
Total Area	1,672 sqm / 17,994 sqft

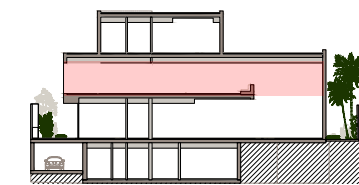
BASEMENT
585 sqm / 6,301 sqft



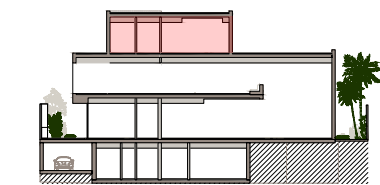
GROUND FLOOR
350 sqm / 3,768 sqft



FIRST FLOOR
439 sqm / 4,723 sqft



SECOND FLOOR - ROOFTOP
297 sqm / 3,202 sqft



ARTIS

TYPE 2 - LAGOONSIDE

Amenities

Double Height Entry
Double Height Spaces
Private Home Elevator
Underground Car Gallery

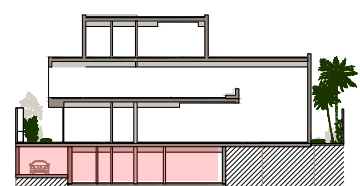
Formal Living Area
Two Family Living Areas
Show Kitchen
Closed Kitchen

Butler Space
Guest Suite
Home Office
His & Hers Walk in Closets

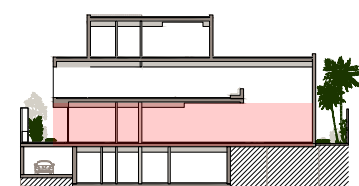
Nanny Room
Driver's Room
Mega Master Bedroom
Maid's Room

Internal Area	1,005 sqm / 10,821 sqft
Balcony/Terrace	298 sqm / 3,204 sqft
Garage	369 sqm / 3,969 sqft
Total Area	1,672 sqm / 17,994 sqft

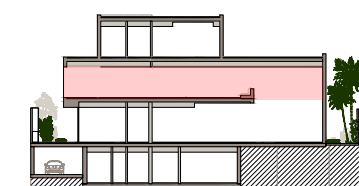
BASEMENT
585 sqm / 6,301 sqft



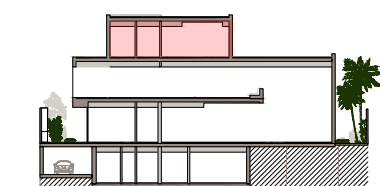
GROUND FLOOR
350 sqm / 3,768 sqft



FIRST FLOOR
439 sqm / 4,723 sqft



SECOND FLOOR - ROOFTOP
297 sqm / 3,202 sqft



ARTIS

TYPE 3 - LAGOONSIDE

Amenities

Double Height Entry
Double Height Spaces
Private Home Elevator
Underground Car Gallery

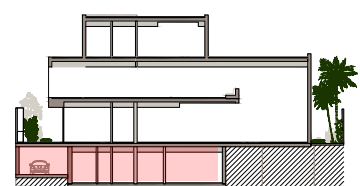
Formal Living Area
Two Family Living Areas
Show Kitchen
Closed Kitchen

Butler Space
Majlis
Home Office
His & Hers Walk in Closets

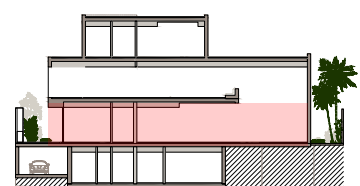
Nanny Room
Maid's Room
Driver's Room

Internal Area	1,005 sqm / 10,821 sqft
Balcony/Terrace	298 sqm / 3,204 sqft
Garage	369 sqm / 3,969 sqft
Total Area	1,672 sqm / 17,994 sqft

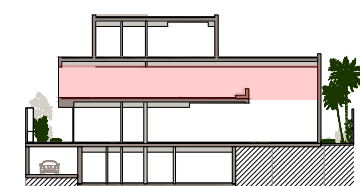
BASEMENT
585 sqm / 6,301 sqft



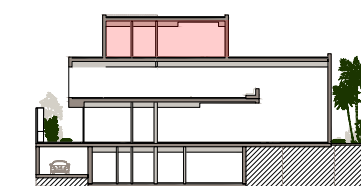
GROUND FLOOR
350 sqm / 3,768 sqft



FIRST FLOOR
439 sqm / 4,723 sqft



SECOND FLOOR - ROOFTOP
297 sqm / 3,202 sqft



ARTIS

TYPE 4 - LAGOONSIDE

Amenities

Double Height Entry
Double Height Spaces
Private Home Elevator
Underground Car Gallery

Formal Living Area
Two Family Living Areas
Show Kitchen
Closed Kitchen

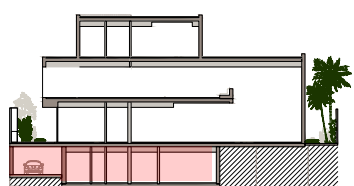
Butler Space
Majlis
Home Office
His & Hers Walk in Closets

Nanny Room
Driver's Room
Maid's Room
Mega Master Bedroom

Internal Area	1,005 sqm / 10,821 sqft
Balcony/Terrace	298 sqm / 3,204 sqft
Garage	369 sqm / 3,969 sqft
Total Area	1,672 sqm / 17,994 sqft

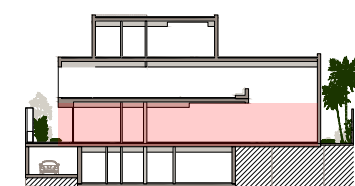
BASEMENT

585 sqm / 6,301 sqft



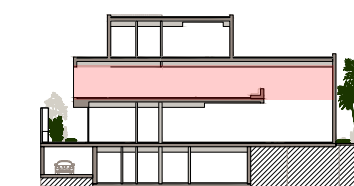
GROUND FLOOR

350 sqm / 3,768 sqft



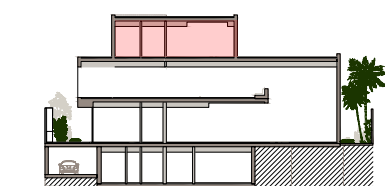
FIRST FLOOR

439 sqm / 4,723 sqft



SECOND FLOOR - ROOFTOP

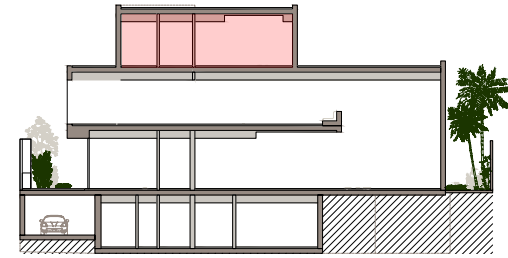
297 sqm / 3,202 sqft



ARTIS

UPGRADES TYPE 3 & 4

ROOF



OPTION 1 - WELL-BEING
297 sqm / 3,202 sqft



OPTION 2 - SKY SUITE
297 sqm / 3,202 sqft



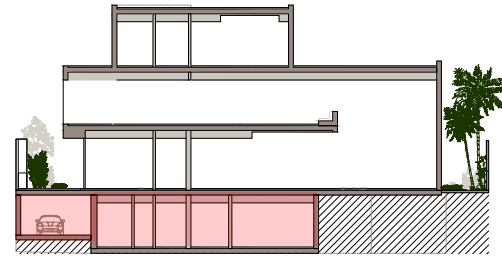
OPTION 3 - ENTERTAINMENT
297 sqm / 3,202 sqft



ARTIS

UPGRADES TYPE 3 & 4

BASEMENT



OPTION 1 - WELL-BEING
585 sqm / 6,301 sqft



OPTION 2 - ENTERTAINMENT
585 sqm / 6,301 sqft



























LEIA

TYPE 1

Amenities

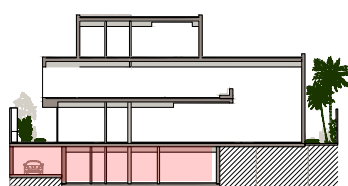
Private Home Elevator
Underground Parking
Guest Suite
His & Hers walk-in closets

Staff rooms
Safe Room
Family Room
Fitted Laundry room

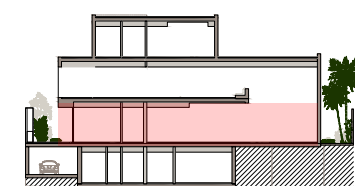
Security Entrance gate

Internal Area	1,192 sqm / 12,834 sqft
Balcony/Terrace	133 sqm / 1,430 sqft
Garage	256 sqm / 2,758 sqft
Total Area	1,581 sqm / 17,022 sqft

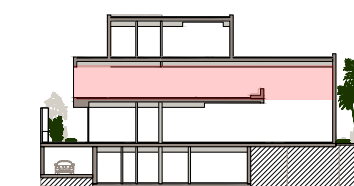
BASEMENT
643 sqm / 6,923 sqft



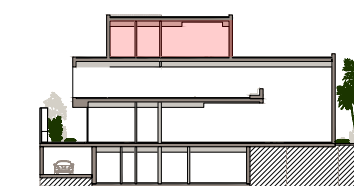
GROUND FLOOR
388 sqm / 4,179 sqft



FIRST FLOOR
388 sqm / 4,172 sqft



ROOFTOP
162 sqm / 1,749 sqft



LEIA

TYPE 2

Amenities

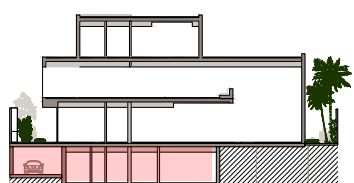
Private Home Elevator
Underground Parking
Majlis
His & Hers walk-in closets

Staff Rooms
Safe Room
Family Room
Fitted Laundry Room

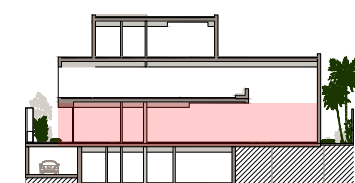
Security Entrance gate

Internal Area	1,192 sqm / 12,834 sqft
Balcony/Terrace	133 sqm / 1,430 sqft
Garage	256 sqm / 2,758 sqft
Total Area	1,581 sqm / 17,022 sqft

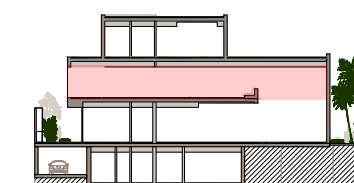
BASEMENT
643 sqm / 6,923 sqft



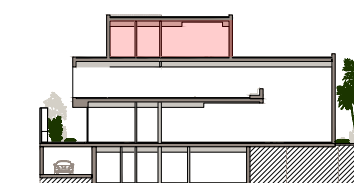
GROUND FLOOR
388 sqm / 4,179 sqft



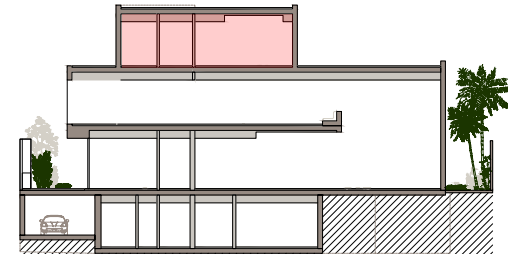
FIRST FLOOR
388 sqm / 4,172 sqft



ROOFTOP
162 sqm / 1,749 sqft



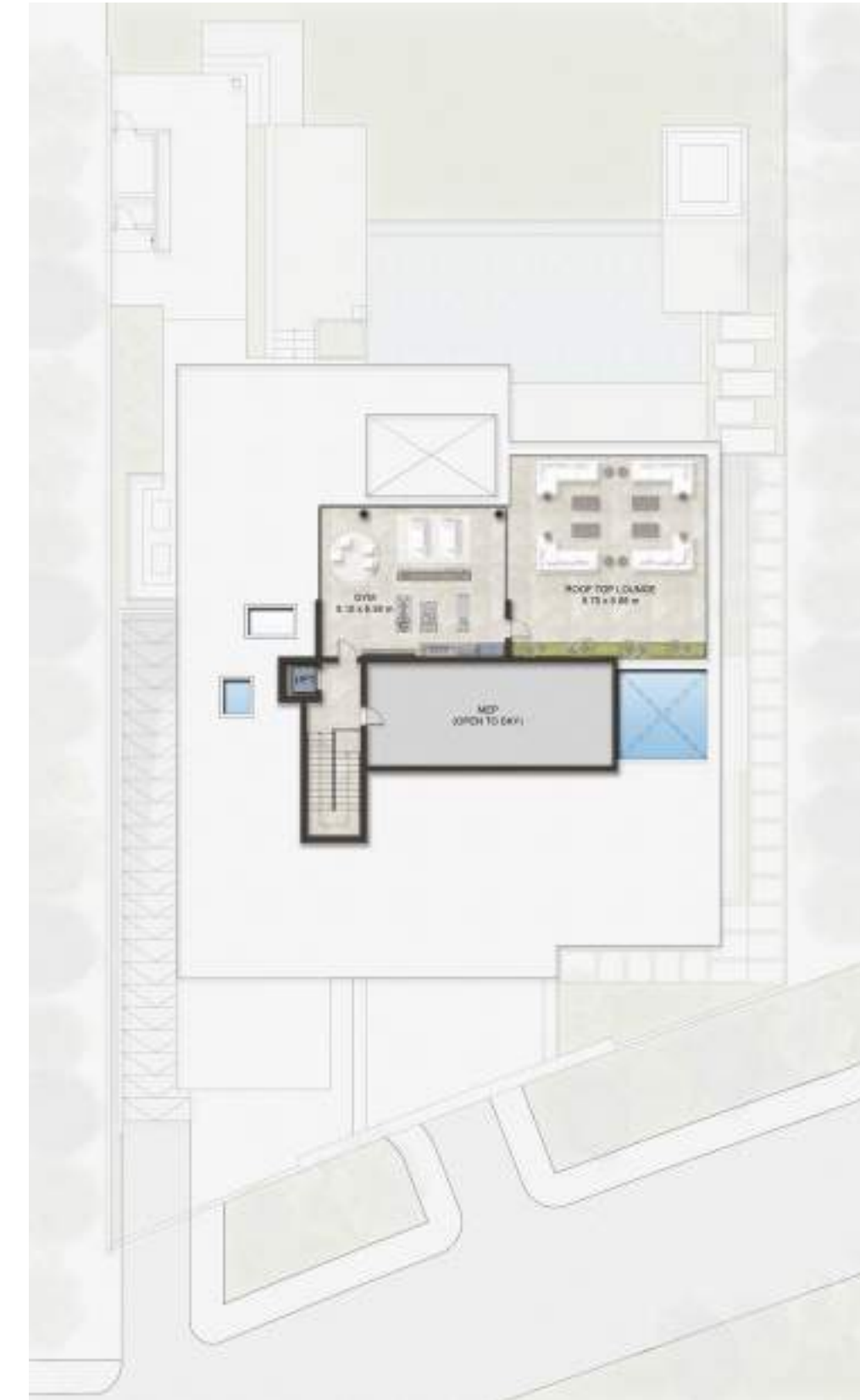
ROOF



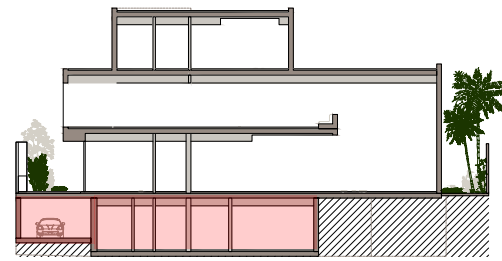
OPTION 1 - ENTERTAINMENT
162 sqm / 1,749 sqft



OPTION 2 - WELL BEING
162 sqm / 1,749 sqft



BASEMENT



OPTION 1 - ENTERTAINMENT
643 sqm / 6,923 sqft



OPTION 2 - WELL BEING
643 sqm / 6,923 sqft













ELYSIAN MANSIONS