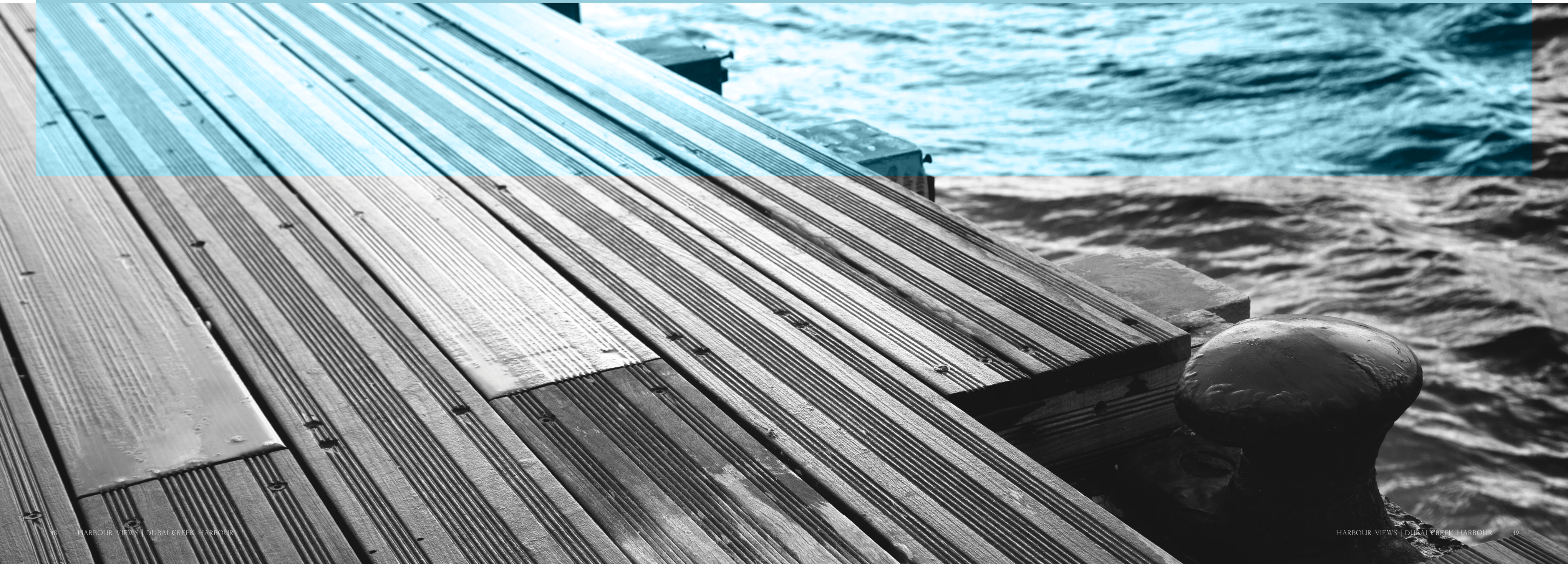
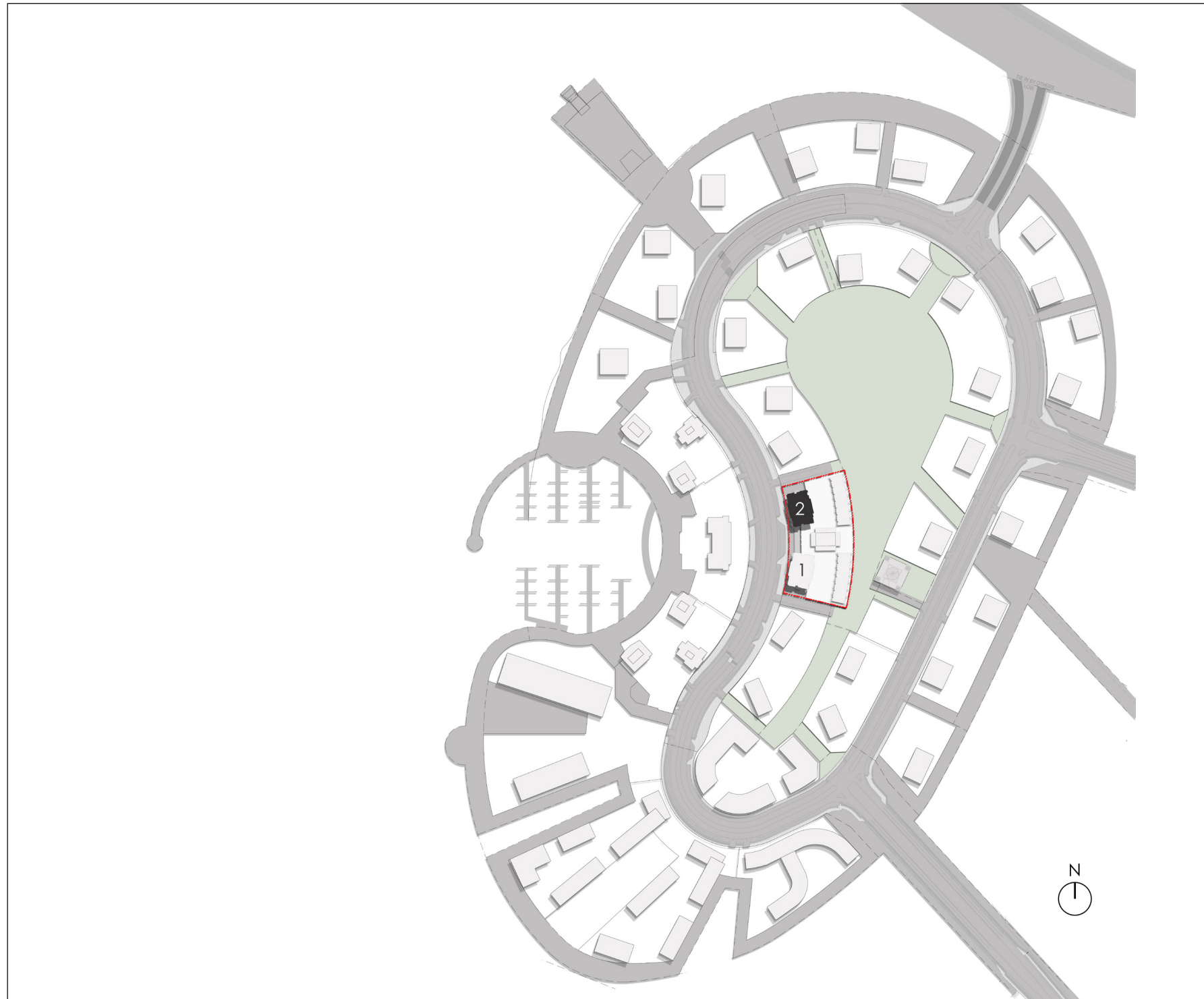


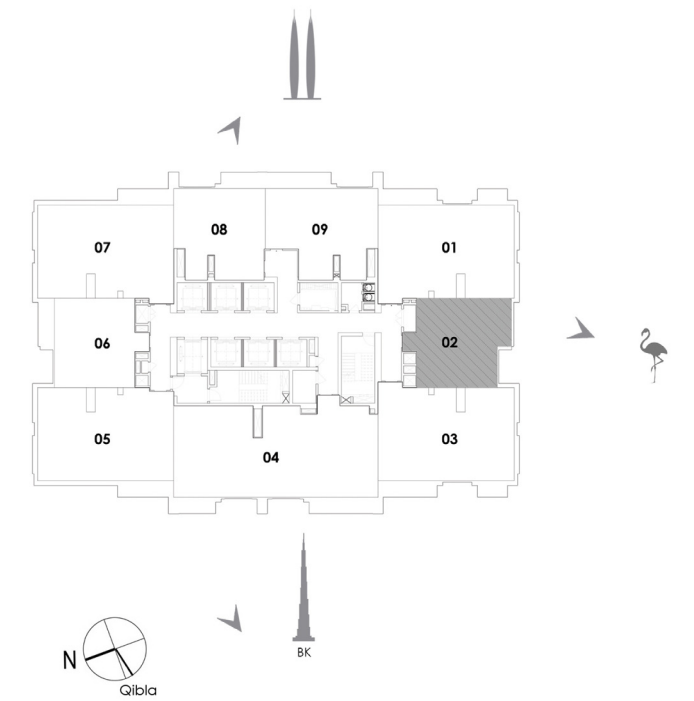
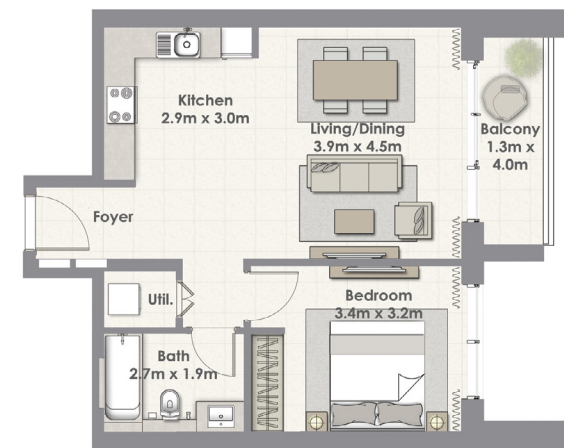
FLOOR PLANS



HARBOUR VIEWS- THE ISLAND DISTRICT SITE PLAN

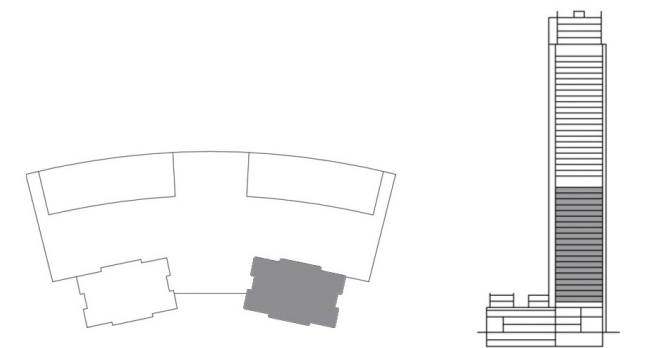


I BEDROOM TOWER I



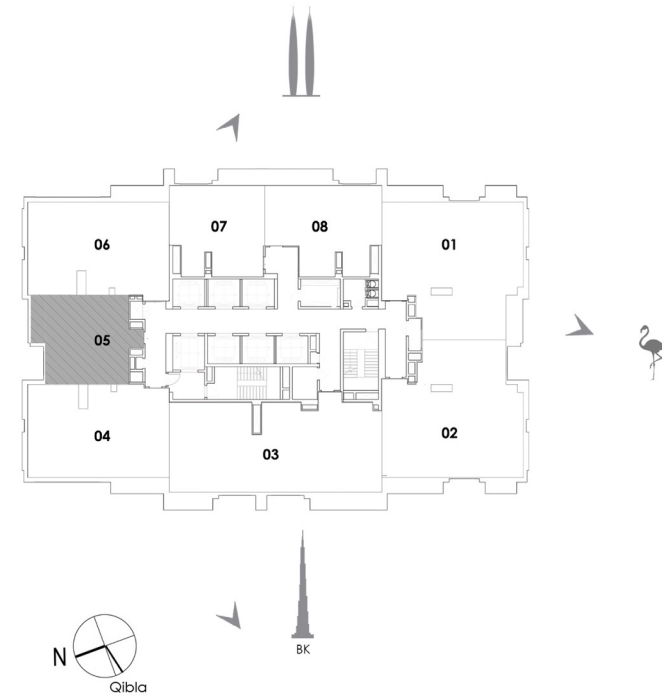
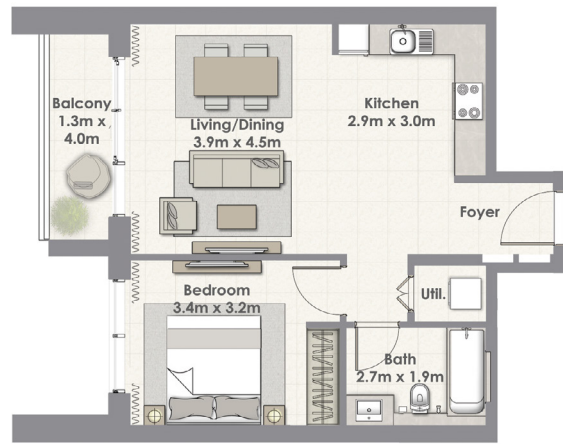
UNIT 02 / LEVEL 4-23

Suite Area	59.81 Sq.m. / 644 Sq.ft.
Balcony Area	5.87 Sq.m. / 63 Sq.ft.
Total Area	65.68 Sq.m. / 707 Sq.ft.



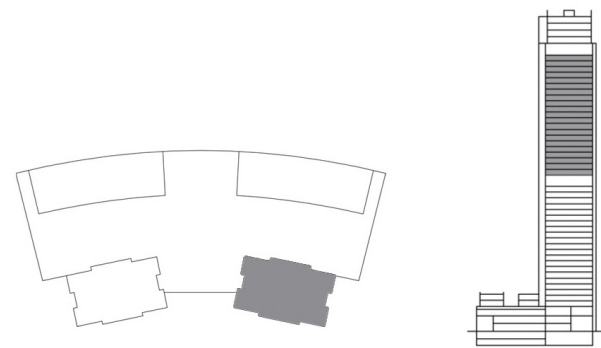
1. All materials, dimensions & drawings are approximate. 2. Information is subject to change without notice. 3. Actual suite area may vary from the stated area. 4. Drawings not to scale. 5. The developer reserves the right to make revisions/alterations without any liability whatsoever.

I BEDROOM TOWER I



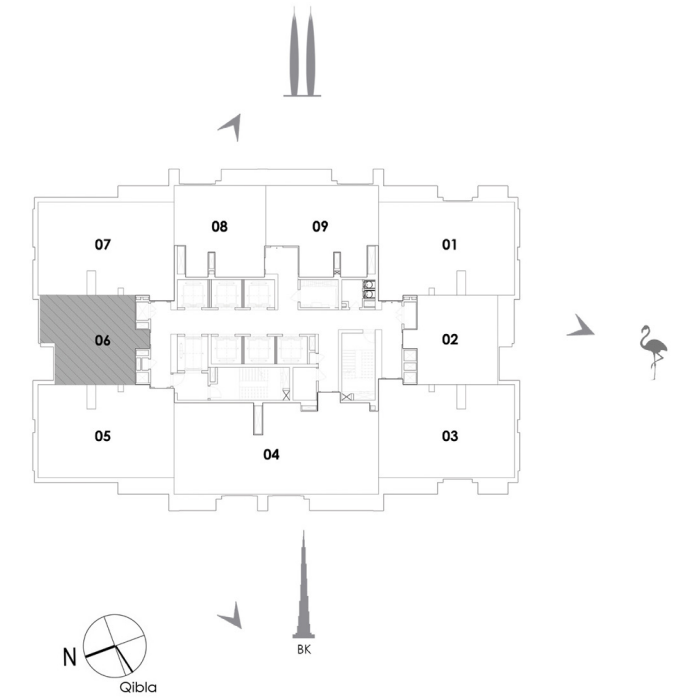
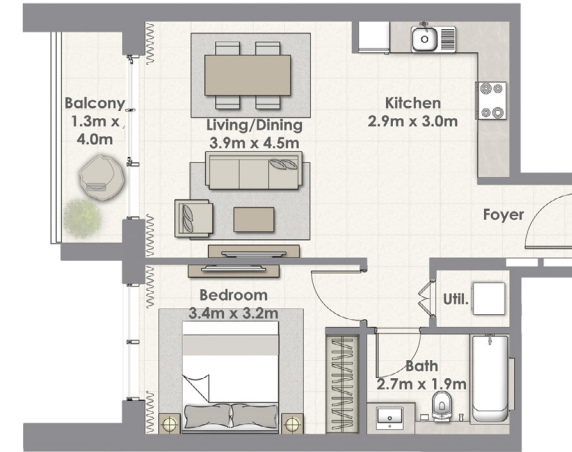
UNIT 05 / LEVEL 25-45

Suite Area	59.81 Sq.m. / 644 Sq.ft.
Balcony Area	5.87 Sq.m. / 63 Sq.ft.
Total Area	65.68 Sq.m. / 707 Sq.ft.



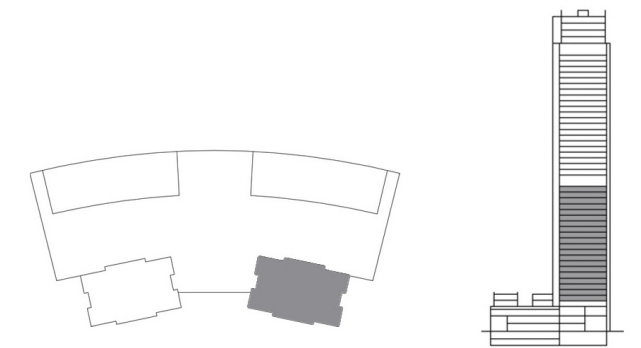
1. All materials, dimensions & drawings are approximate. 2. Information is subject to change without notice. 3. Actual suite area may vary from the stated area. 4. Drawings not to scale. 5. The developer reserves the right to make revisions/alterations without any liability whatsoever.

I BEDROOM TOWER I



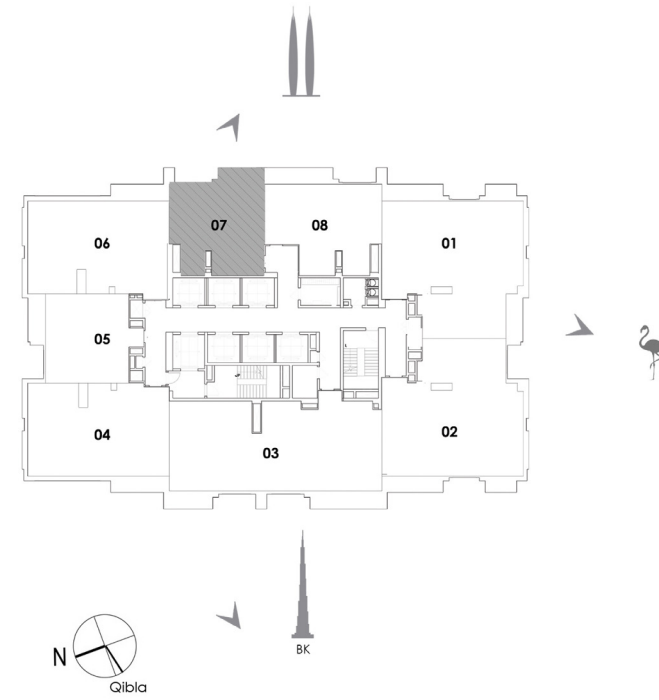
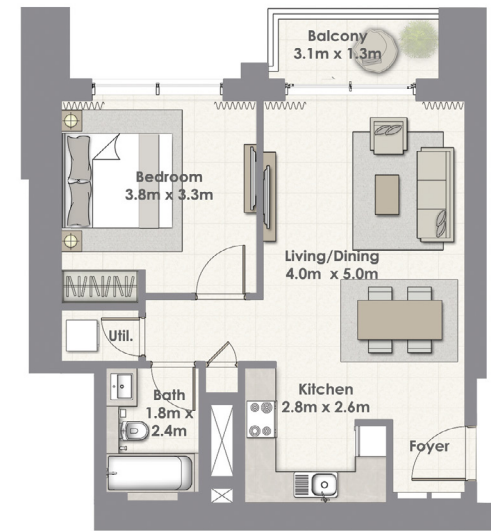
UNIT 06 / LEVEL 4-23

Suite Area	59.81 Sq.m. / 644 Sq.ft.
Balcony Area	5.87 Sq.m. / 63 Sq.ft.
Total Area	65.68 Sq.m. / 707 Sq.ft.



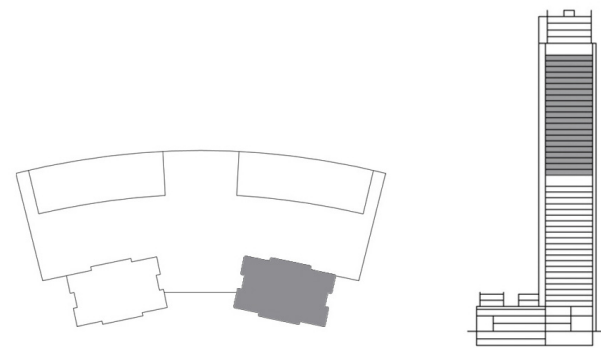
1. All materials, dimensions & drawings are approximate. 2. Information is subject to change without notice. 3. Actual suite area may vary from the stated area. 4. Drawings not to scale. 5. The developer reserves the right to make revisions/alterations without any liability whatsoever.

I BEDROOM TOWER I



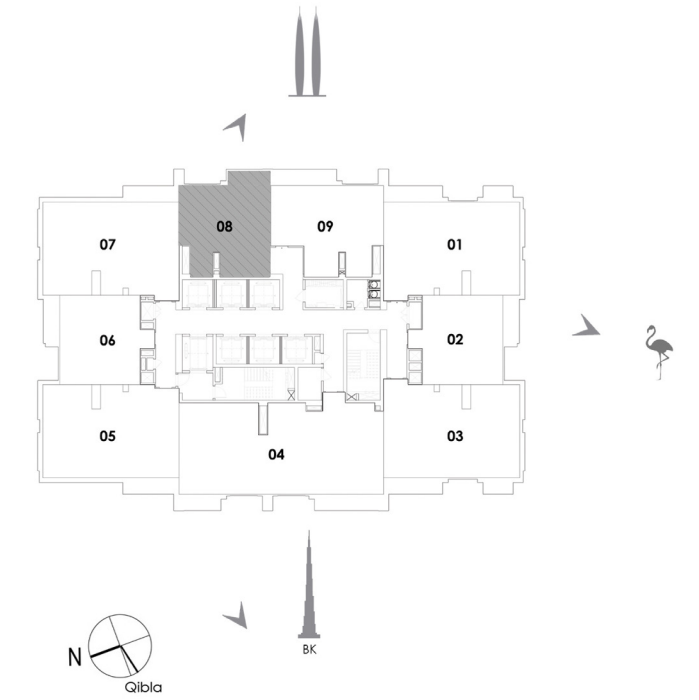
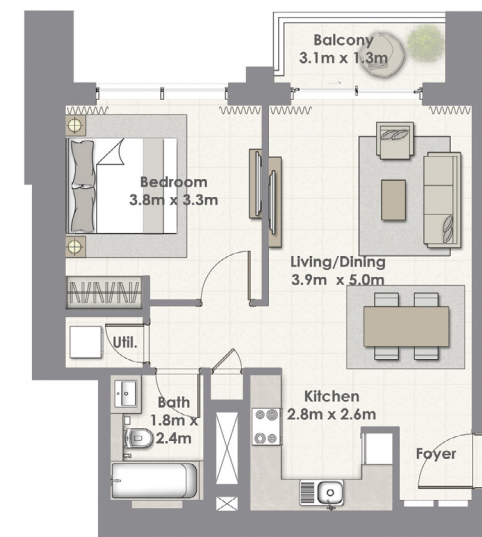
UNIT 07 / LEVEL 25-45

Suite Area	62.52 Sq.m. / 673 Sq.ft.
Balcony Area	4.14 Sq.m. / 45 Sq.ft.
Total Area	66.66 Sq.m. / 718 Sq.ft.



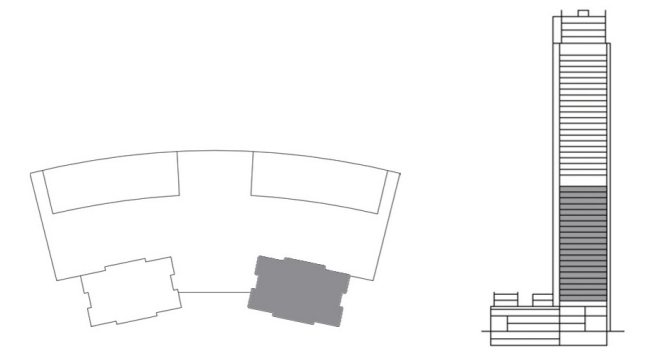
1. All materials, dimensions & drawings are approximate. 2. Information is subject to change without notice. 3. Actual suite area may vary from the stated area. 4. Drawings not to scale. 5. The developer reserves the right to make revisions/alterations without any liability whatsoever.

I BEDROOM TOWER I



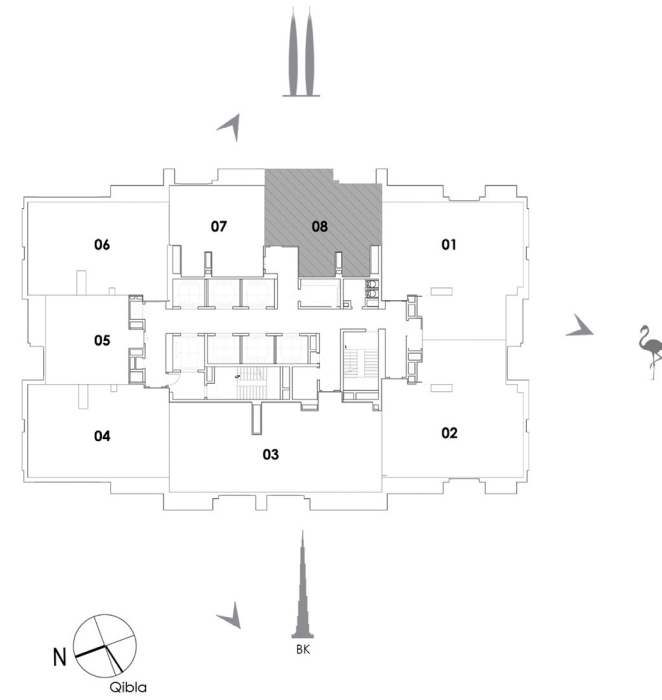
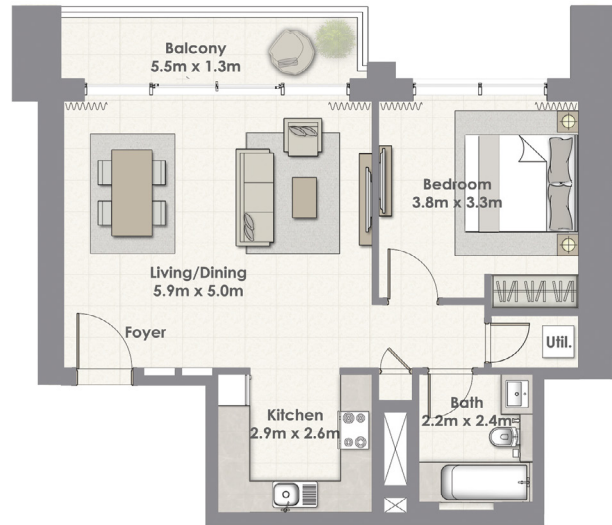
UNIT 08 / LEVEL 4-23

Suite Area	62.24 Sq.m. / 670 Sq.ft.
Balcony Area	4.14 Sq.m. / 45 Sq.ft.
Total Area	66.38 Sq.m. / 715 Sq.ft.



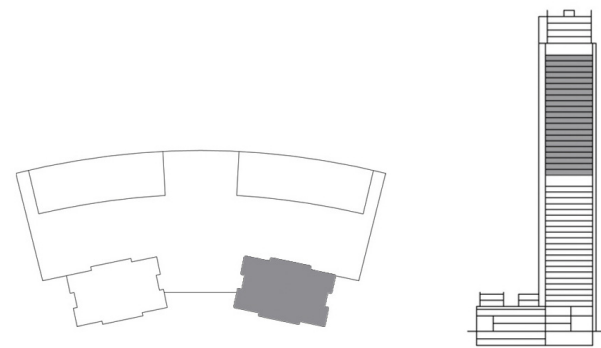
1. All materials, dimensions & drawings are approximate. 2. Information is subject to change without notice. 3. Actual suite area may vary from the stated area. 4. Drawings not to scale. 5. The developer reserves the right to make revisions/alterations without any liability whatsoever.

I BEDROOM TOWER I



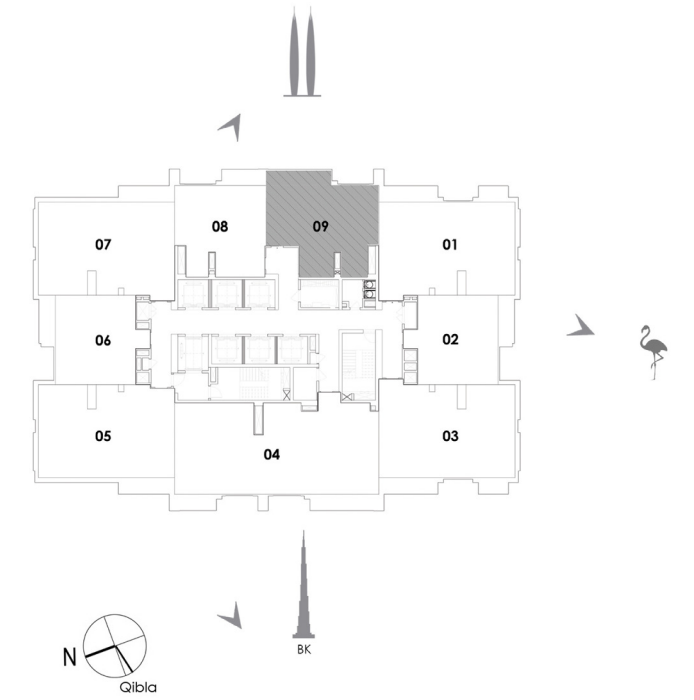
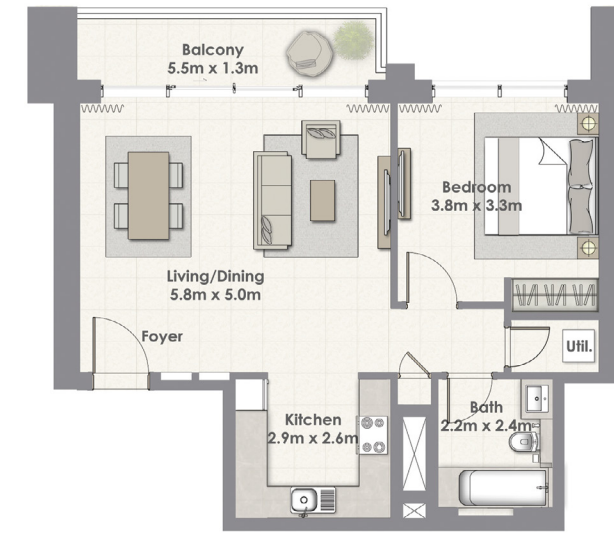
UNIT 08 / LEVEL 25-45

Suite Area	70.00 Sq.m. / 753 Sq.ft.
Balcony Area	7.40 Sq.m. / 80 Sq.ft.
Total Area	77.40 Sq.m. / 833 Sq.ft.



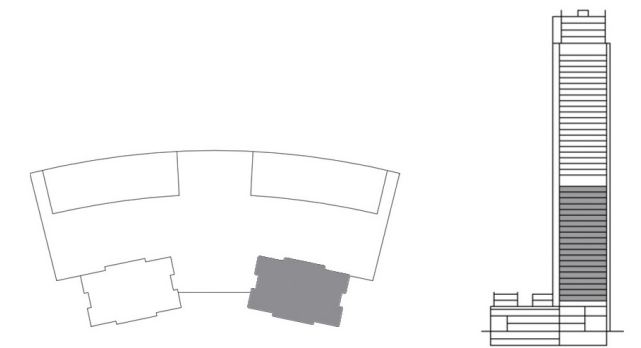
1. All materials, dimensions & drawings are approximate. 2. Information is subject to change without notice. 3. Actual suite area may vary from the stated area. 4. Drawings not to scale. 5. The developer reserves the right to make revisions/alterations without any liability whatsoever.

I BEDROOM TOWER I



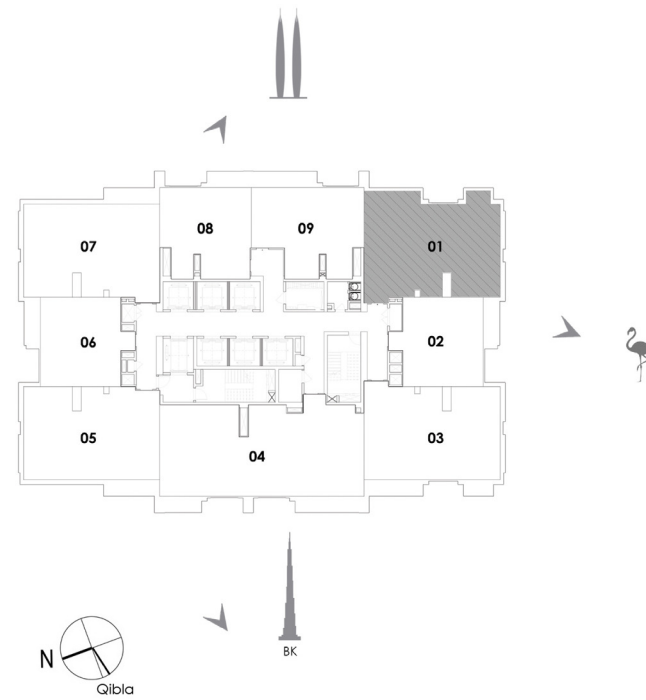
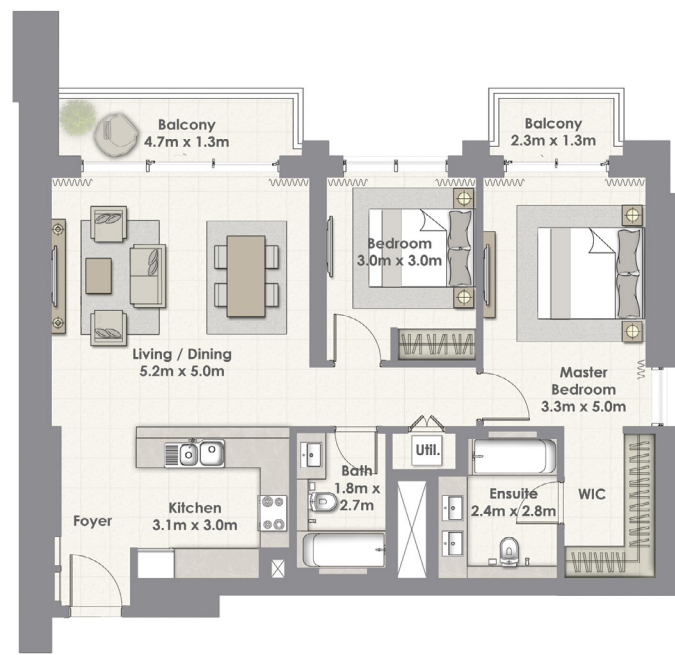
UNIT 09 / LEVEL 4-23

Suite Area	69.88 Sq.m. / 752 Sq.ft.
Balcony Area	7.40 Sq.m. / 80 Sq.ft.
Total Area	77.28 Sq.m. / 832 Sq.ft.



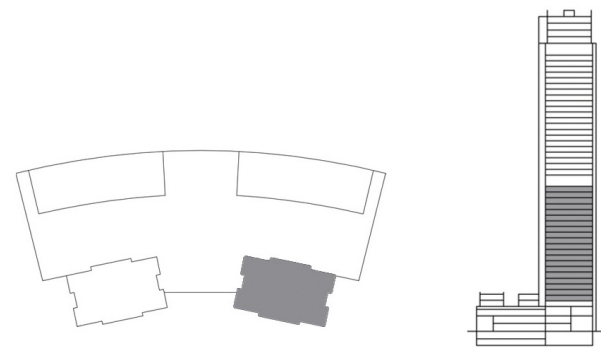
1. All materials, dimensions & drawings are approximate. 2. Information is subject to change without notice. 3. Actual suite area may vary from the stated area. 4. Drawings not to scale. 5. The developer reserves the right to make revisions/alterations without any liability whatsoever.

2 BEDROOM TOWER I



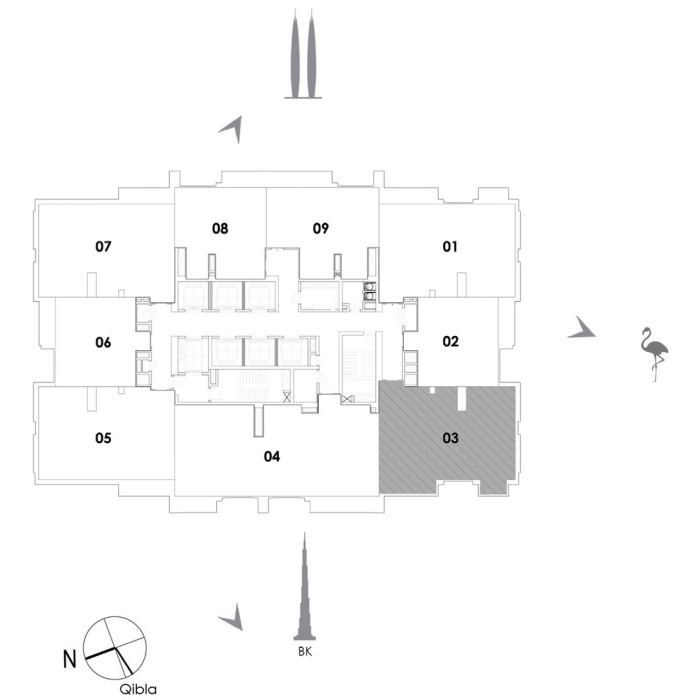
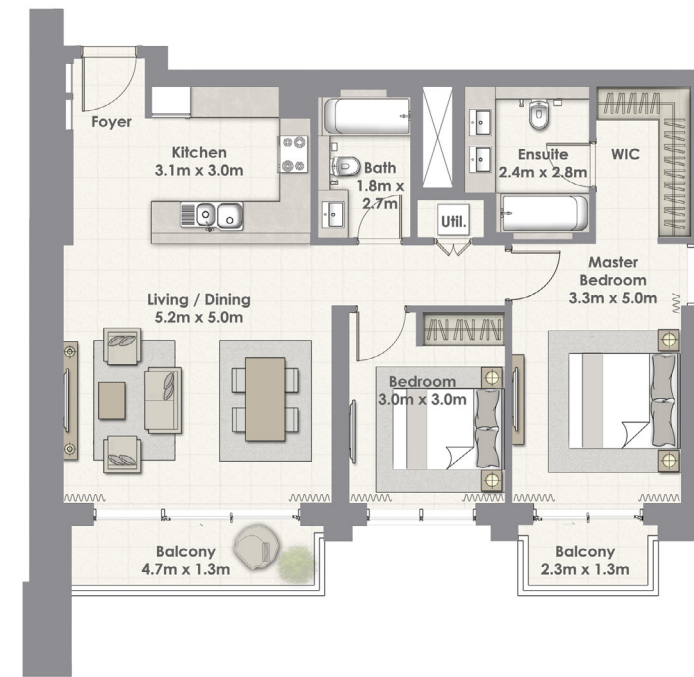
UNIT 01 / LEVEL 4-23

Suite Area	101.31 Sq.m. / 1090 Sq.ft.
Balcony Area	10.20 Sq.m. / 110 Sq.ft.
Total Area	111.51 Sq.m. / 1200 Sq.ft.



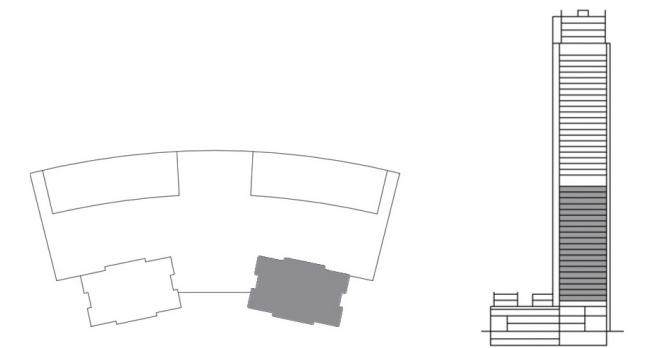
1. All materials, dimensions & drawings are approximate. 2. Information is subject to change without notice. 3. Actual suite area may vary from the stated area. 4. Drawings not to scale. 5. The developer reserves the right to make revisions/alterations without any liability whatsoever.

2 BEDROOM TOWER I



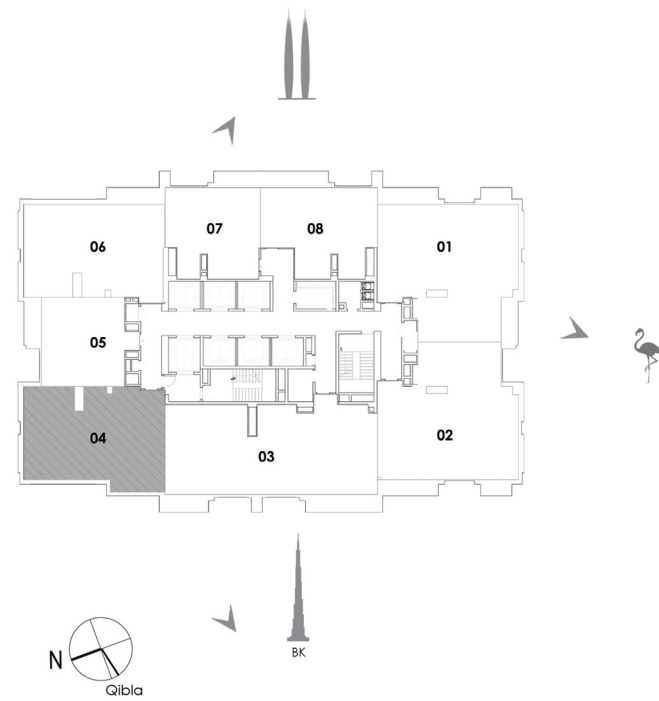
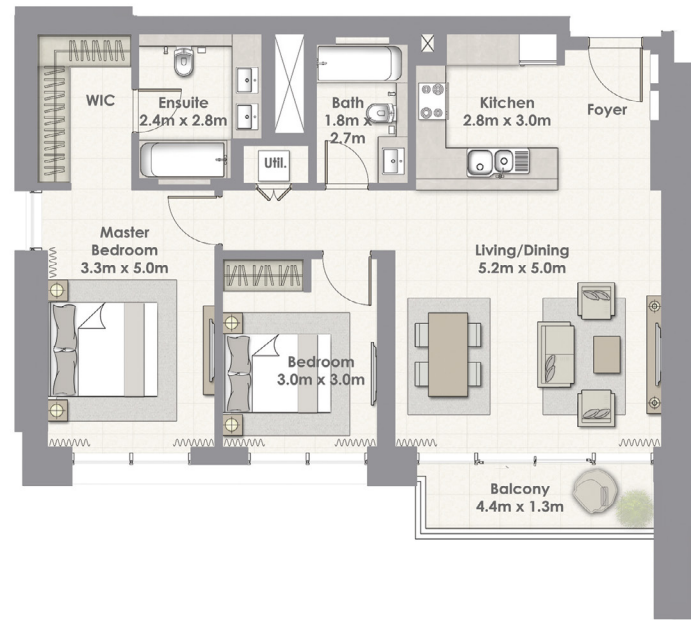
UNIT 03 / LEVEL 4-23

Suite Area	101.31 Sq.m. / 1090 Sq.ft.
Balcony Area	10.20 Sq.m. / 110 Sq.ft.
Total Area	111.51 Sq.m. / 1200 Sq.ft.



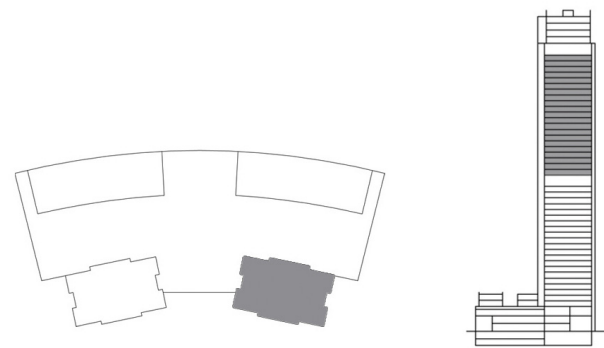
1. All materials, dimensions & drawings are approximate. 2. Information is subject to change without notice. 3. Actual suite area may vary from the stated area. 4. Drawings not to scale. 5. The developer reserves the right to make revisions/alterations without any liability whatsoever.

2 BEDROOM TOWER 1



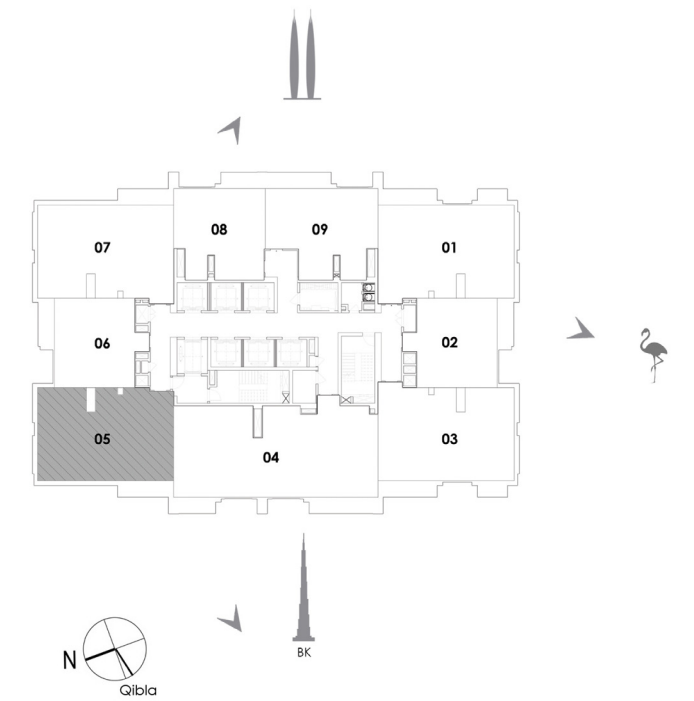
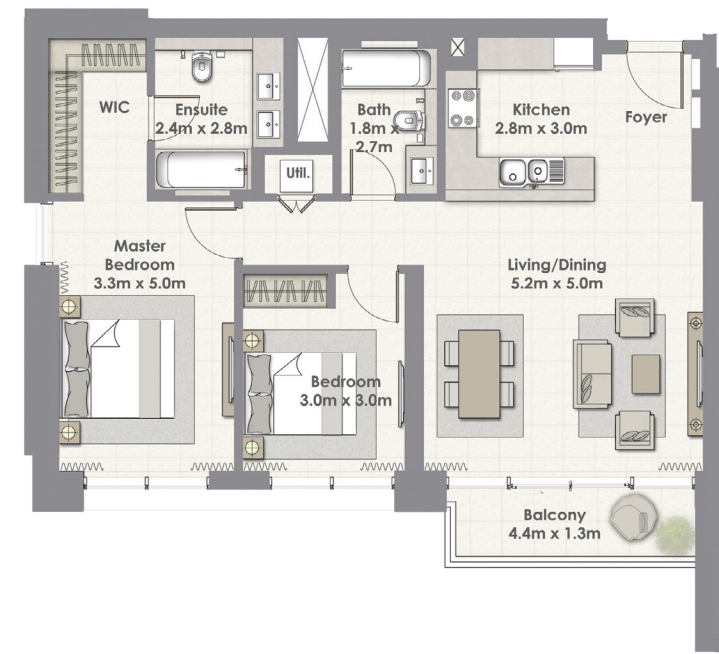
UNIT 04 / LEVEL 25-45

Suite Area	99.58 Sq.m. / 1072 Sq.ft.
Balcony Area	6.58 Sq.m. / 71 Sq.ft.
Total Area	106.16 Sq.m. / 1143 Sq.ft.



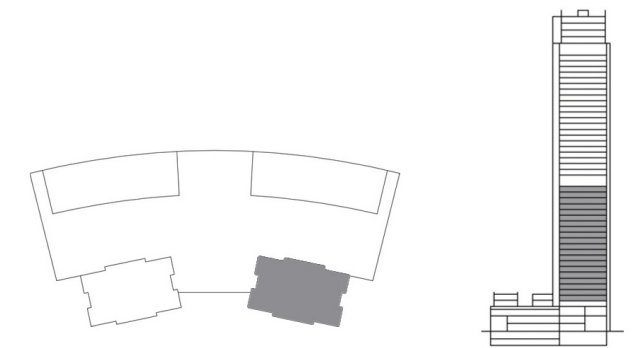
1. All materials, dimensions & drawings are approximate. 2. Information is subject to change without notice. 3. Actual suite area may vary from the stated area. 4. Drawings not to scale. 5. The developer reserves the right to make revisions/alterations without any liability whatsoever.

2 BEDROOM TOWER 1



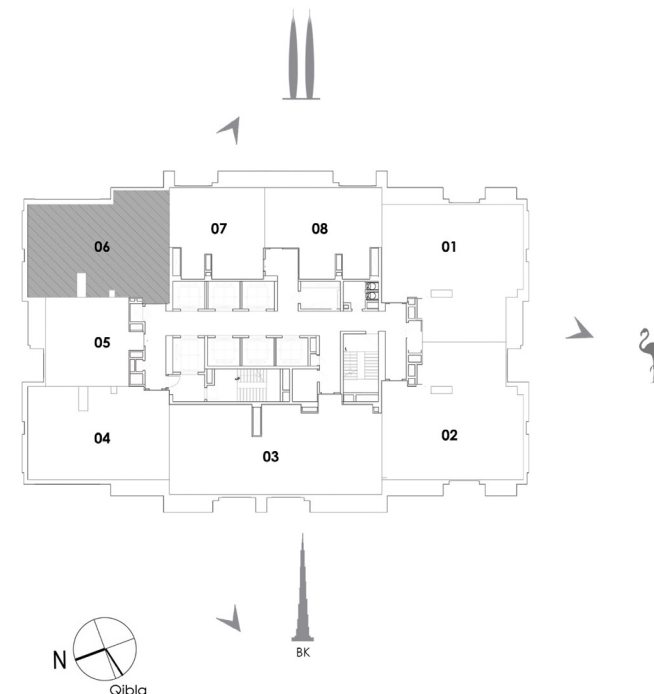
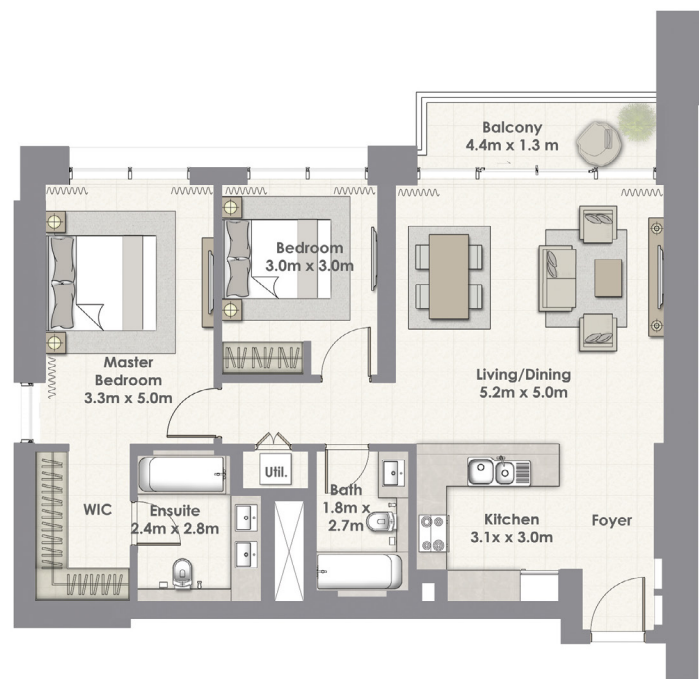
UNIT 05 / LEVEL 4-23

Suite Area	99.58 Sq.m. / 1072 Sq.ft.
Balcony Area	6.58 Sq.m. / 71 Sq.ft.
Total Area	106.16 Sq.m. / 1143 Sq.ft.



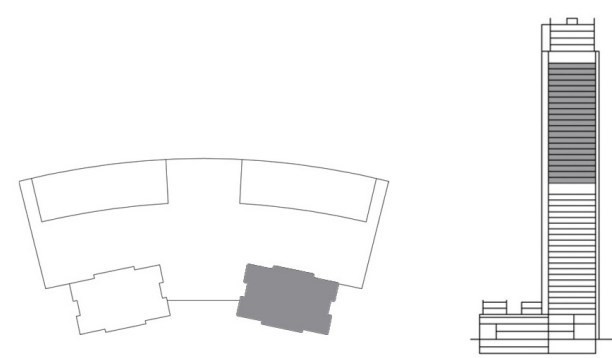
1. All materials, dimensions & drawings are approximate. 2. Information is subject to change without notice. 3. Actual suite area may vary from the stated area. 4. Drawings not to scale. 5. The developer reserves the right to make revisions/alterations without any liability whatsoever.

2 BEDROOM TOWER I



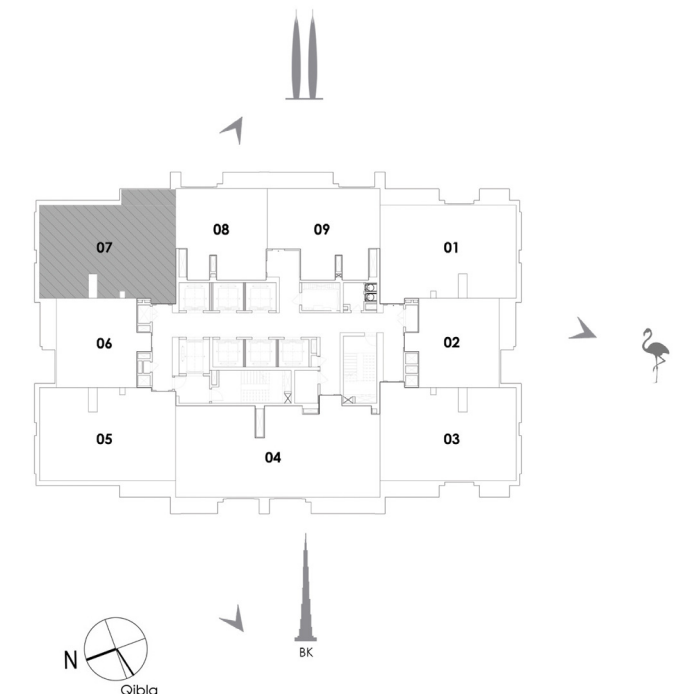
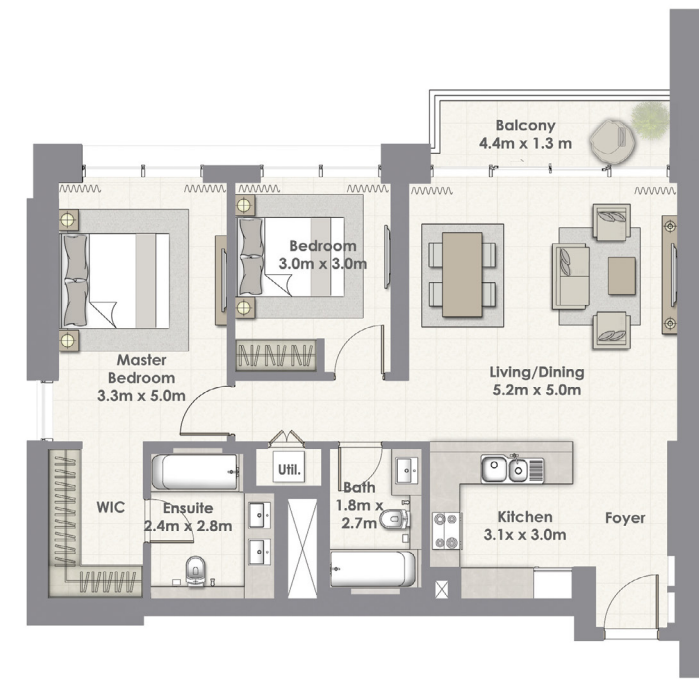
UNIT 06 / LEVEL 25-45

Suite Area	101.55 Sq.m. / 1093 Sq.ft.
Balcony Area	6.58 Sq.m. / 71 Sq.ft.
Total Area	108.13 Sq.m. / 1164 Sq.ft.



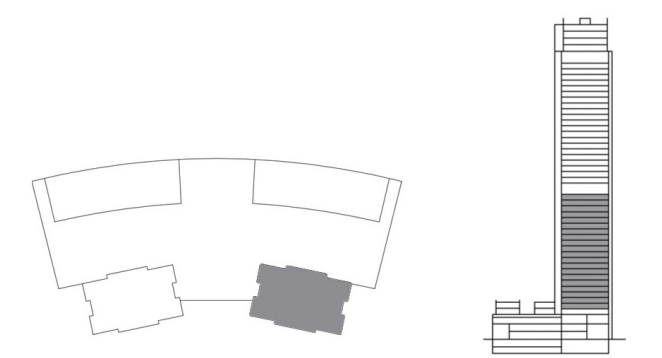
1. All materials, dimensions & drawings are approximate. 2. Information is subject to change without notice. 3. Actual suite area may vary from the stated area. 4. Drawings not to scale. 5. The developer reserves the right to make revisions/alterations without any liability whatsoever.

2 BEDROOM TOWER I



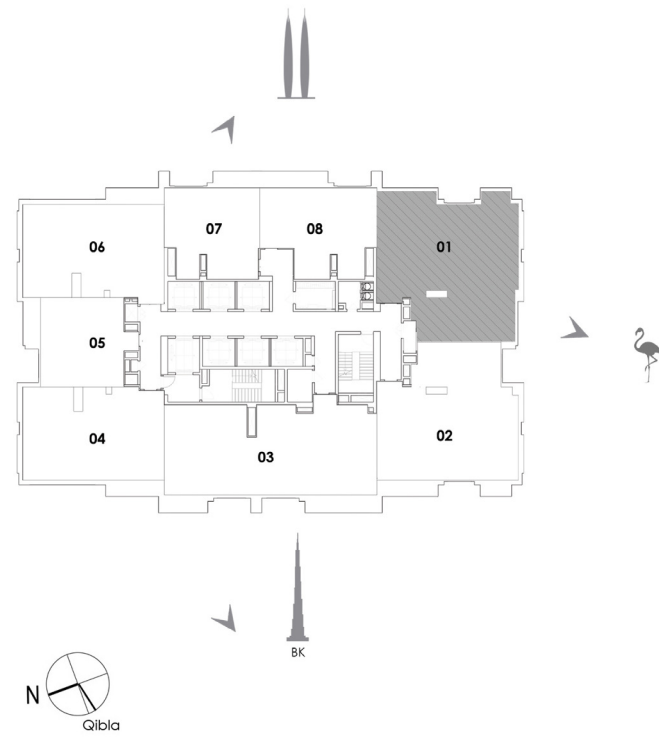
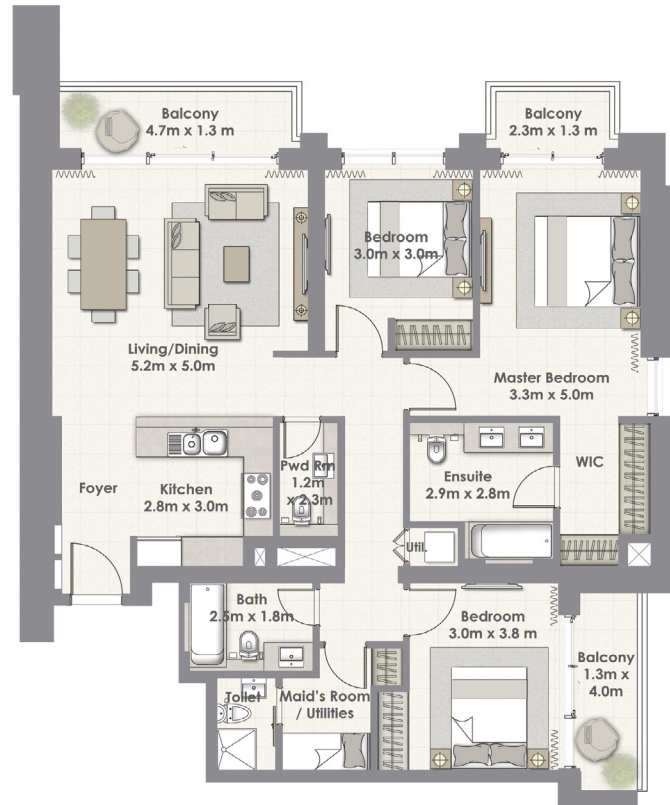
UNIT 07 / LEVEL 4-23

Suite Area	101.55 Sq.m. / 1093 Sq.ft.
Balcony Area	6.58 Sq.m. / 71 Sq.ft.
Total Area	108.13 Sq.m. / 1164 Sq.ft.



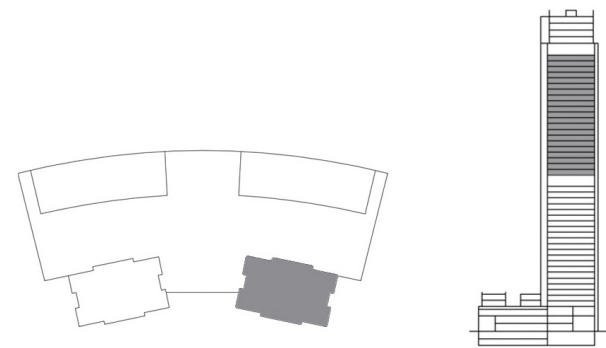
1. All materials, dimensions & drawings are approximate. 2. Information is subject to change without notice. 3. Actual suite area may vary from the stated area. 4. Drawings not to scale. 5. The developer reserves the right to make revisions/alterations without any liability whatsoever.

3 BEDROOM TOWER I



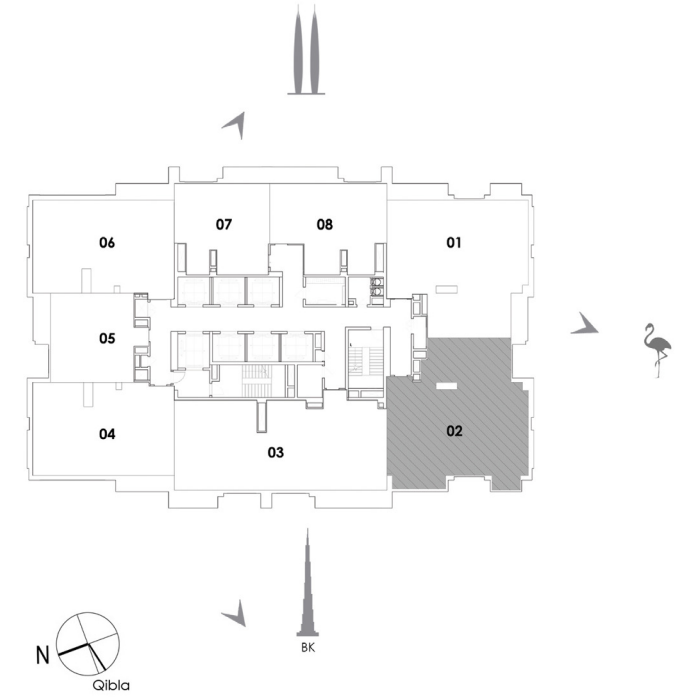
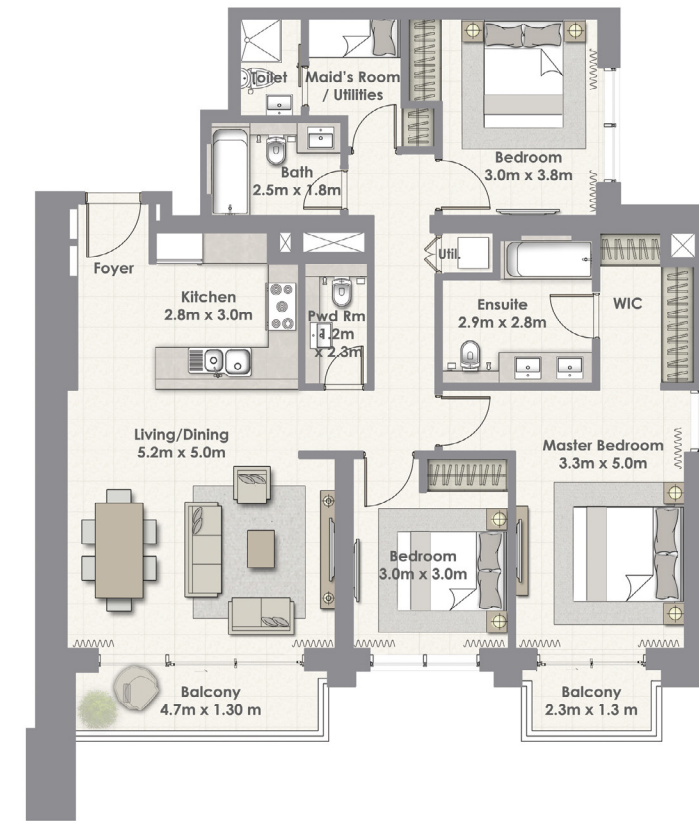
UNIT 01 / LEVEL 25-45

Suite Area	131.80 Sq.m. / 1419 Sq.ft.
Balcony Area	16.09 Sq.m. / 173 Sq.ft.
Total Area	147.89 Sq.m. / 1592 Sq.ft.



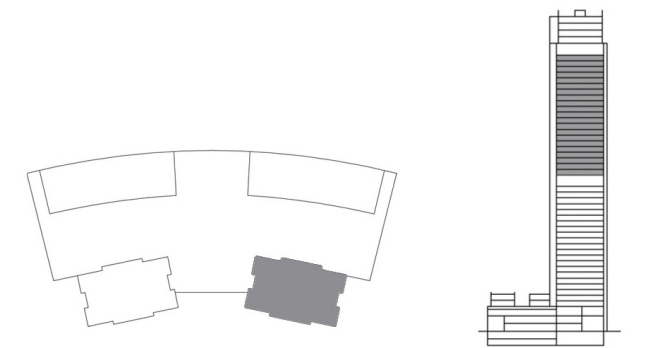
1. All materials, dimensions & drawings are approximate. 2. Information is subject to change without notice. 3. Actual suite area may vary from the stated area. 4. Drawings not to scale. 5. The developer reserves the right to make revisions/alterations without any liability whatsoever.

3 BEDROOM TOWER I



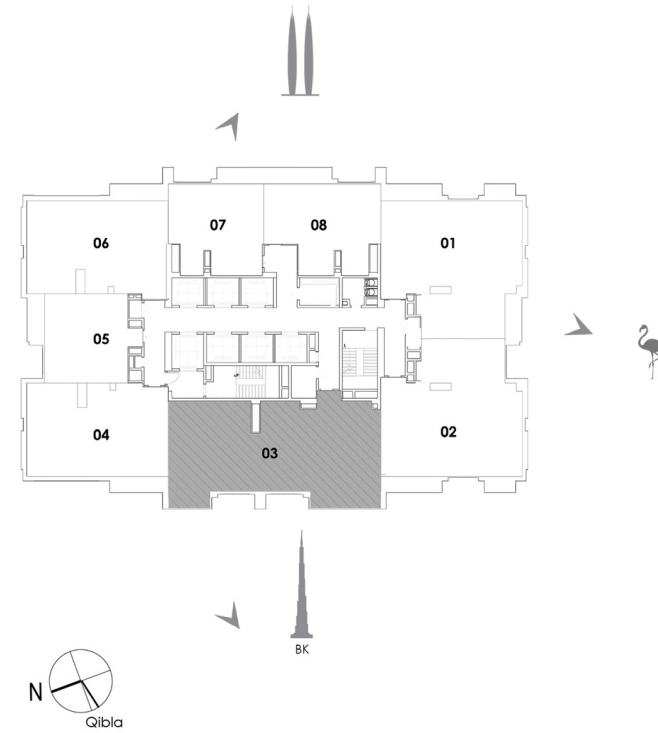
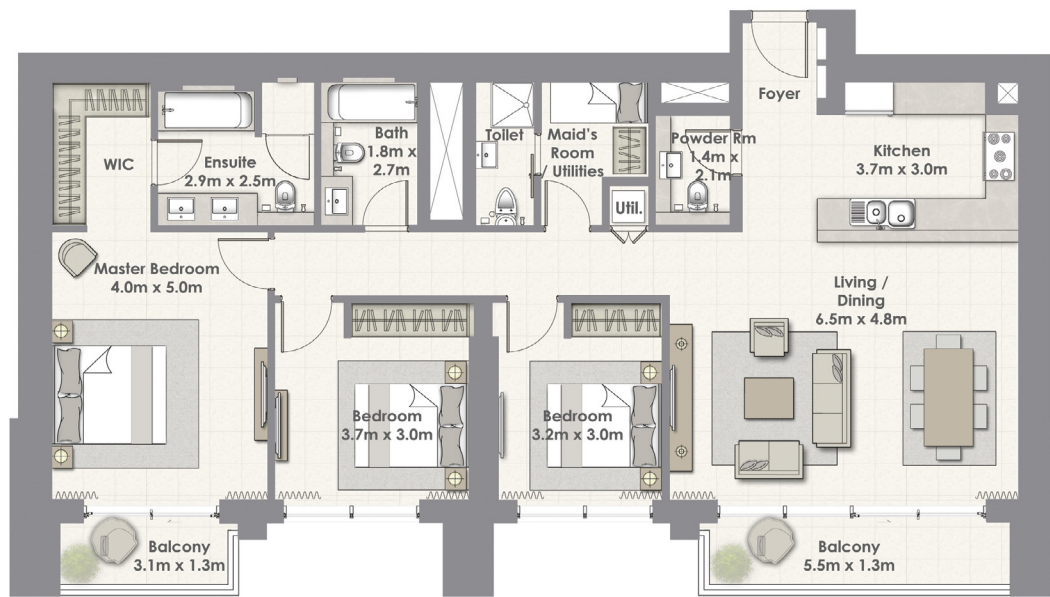
UNIT 02 / LEVEL 25-45

Suite Area	131.59 Sq.m. / 1416 Sq.ft.
Balcony Area	10.20 Sq.m. / 110 Sq.ft.
Total Area	141.79 Sq.m. / 1526 Sq.ft.



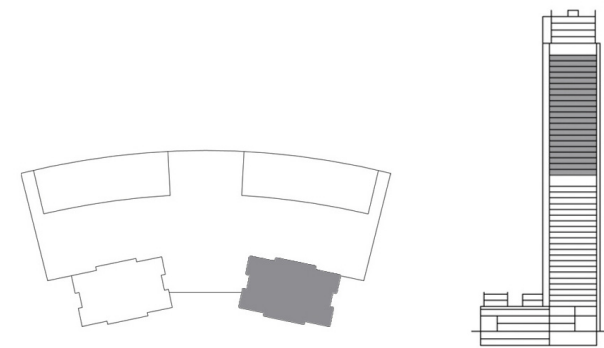
1. All materials, dimensions & drawings are approximate. 2. Information is subject to change without notice. 3. Actual suite area may vary from the stated area. 4. Drawings not to scale. 5. The developer reserves the right to make revisions/alterations without any liability whatsoever.

3 BEDROOM TOWER I



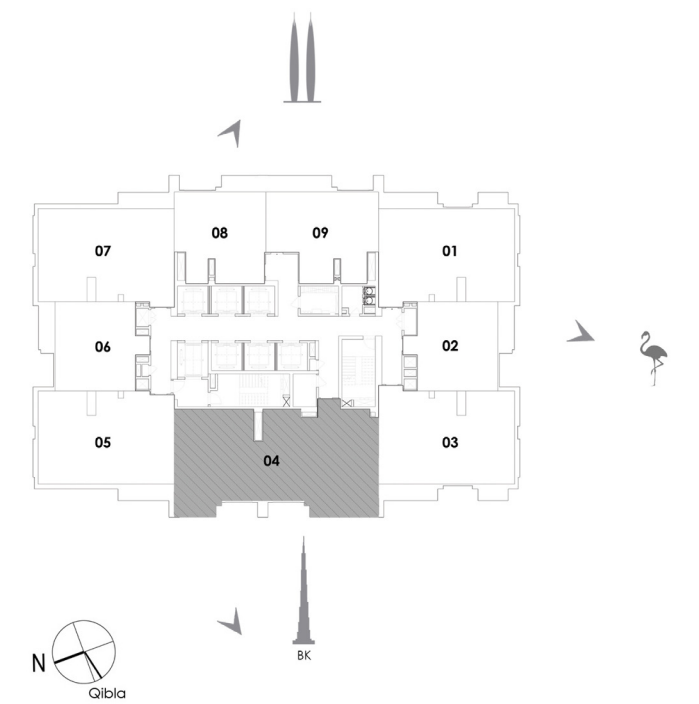
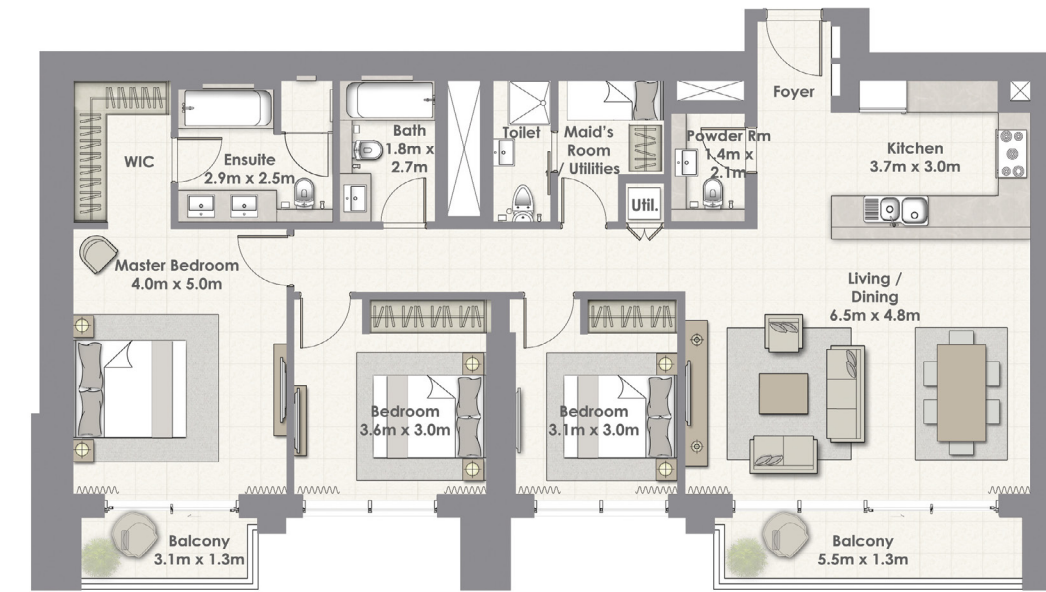
UNIT 03 / LEVEL 25-45

Suite Area	147.98 Sq.m. / 1593 Sq.ft.
Balcony Area	11.58 Sq.m. / 125 Sq.ft.
Total Area	159.56 Sq.m. / 1718 Sq.ft.



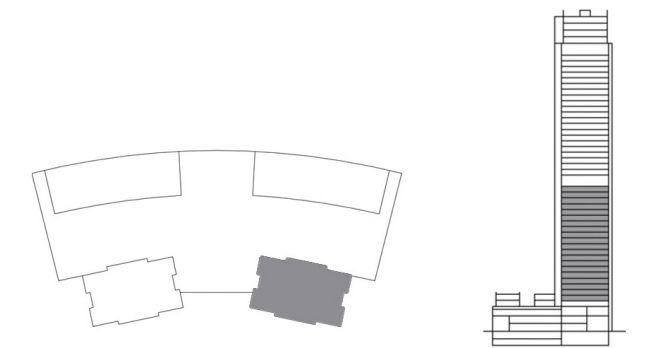
1. All materials, dimensions & drawings are approximate. 2. Information is subject to change without notice. 3. Actual suite area may vary from the stated area. 4. Drawings not to scale. 5. The developer reserves the right to make revisions/alterations without any liability whatsoever.

3 BEDROOM TOWER I



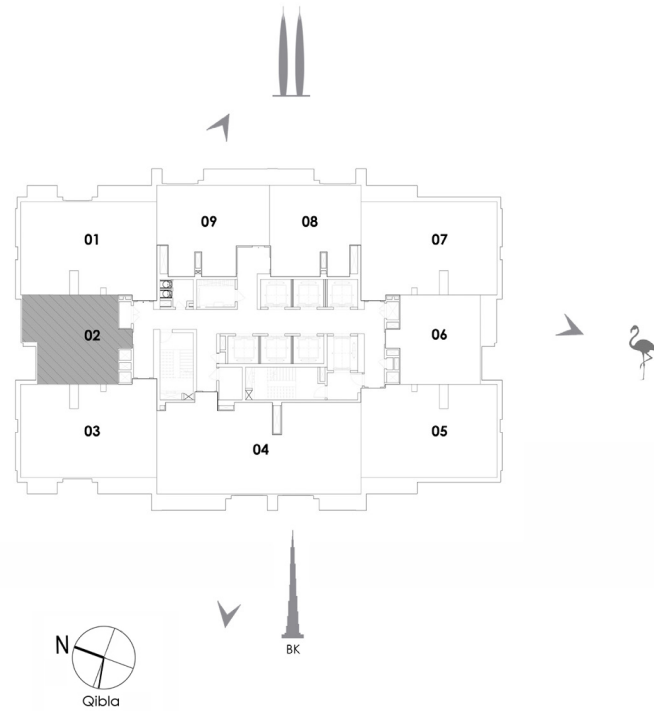
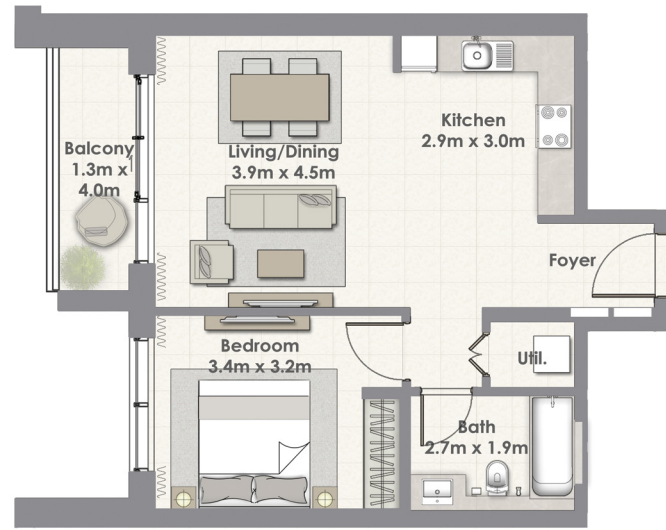
UNIT 04 / LEVEL 4-23

Suite Area	147.98 Sq.m. / 1593 Sq.ft.
Balcony Area	11.58 Sq.m. / 125 Sq.ft.
Total Area	159.56 Sq.m. / 1718 Sq.ft.



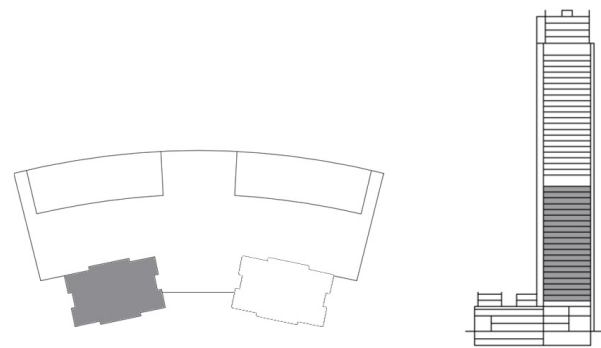
1. All materials, dimensions & drawings are approximate. 2. Information is subject to change without notice. 3. Actual suite area may vary from the stated area. 4. Drawings not to scale. 5. The developer reserves the right to make revisions/alterations without any liability whatsoever.

I BEDROOM TOWER 2



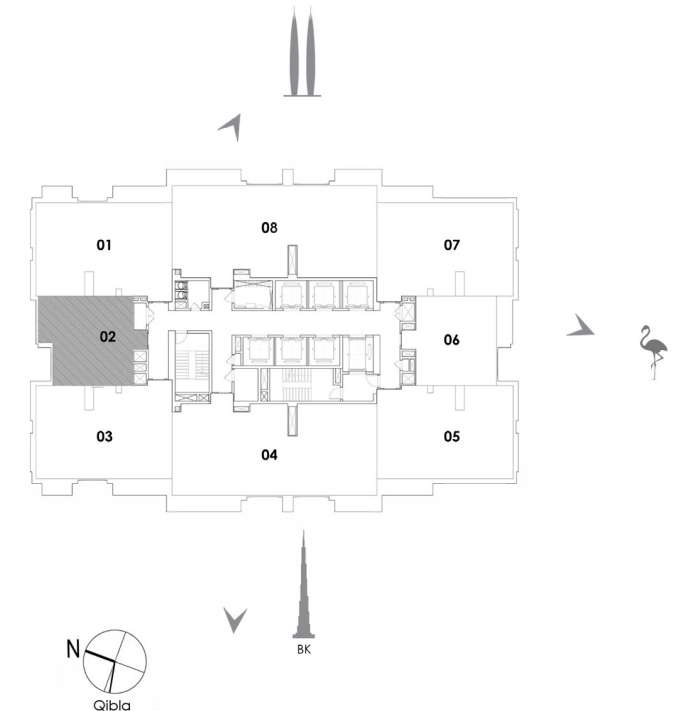
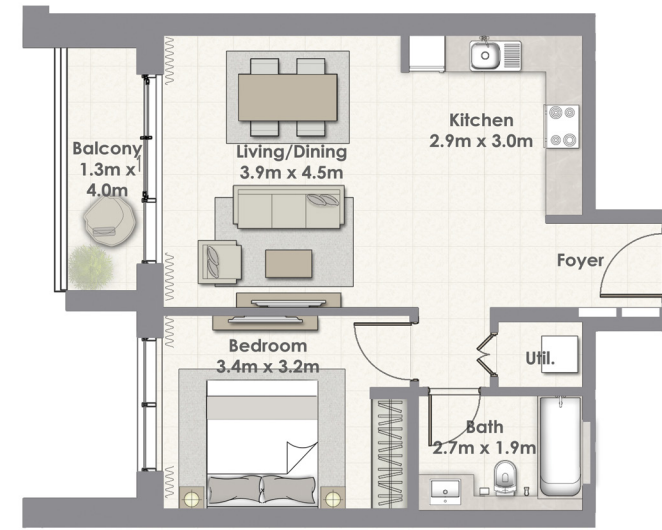
UNIT 02 / LEVEL 4-23

Suite Area	59.81 Sq.m. / 644 Sq.ft.
Balcony Area	5.87 Sq.m. / 63 Sq.ft.
Total Area	65.68 Sq.m. / 707 Sq.ft.



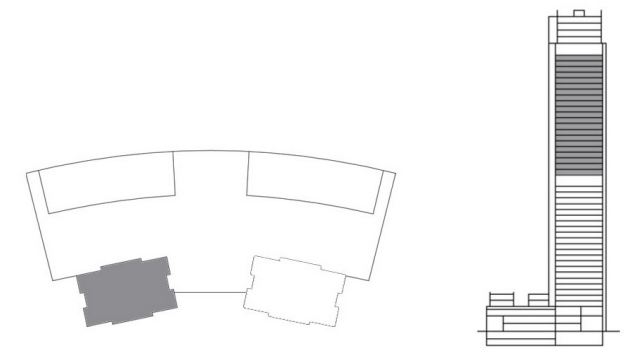
1. All materials, dimensions & drawings are approximate. 2. Information is subject to change without notice. 3. Actual suite area may vary from the stated area. 4. Drawings not to scale. 5. The developer reserves the right to make revisions/alterations without any liability whatsoever.

I BEDROOM TOWER 2



UNIT 02 / LEVEL 25-45

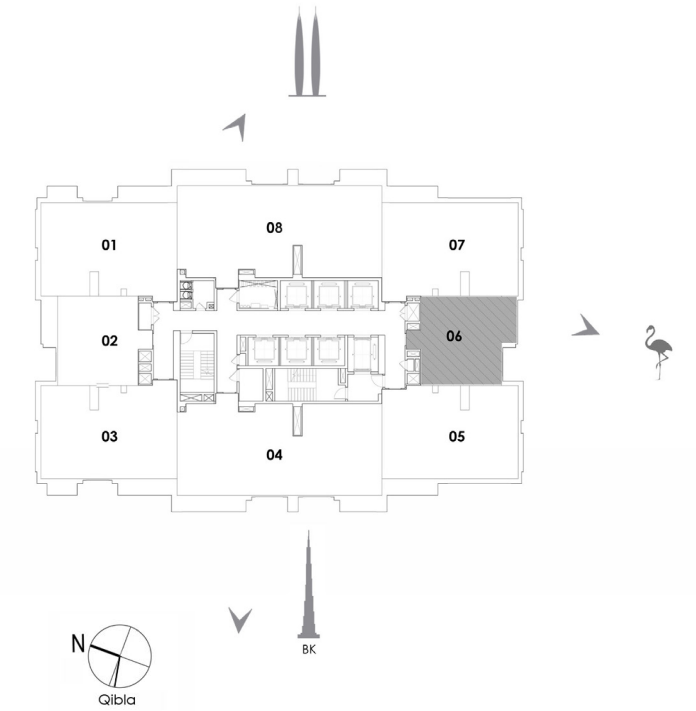
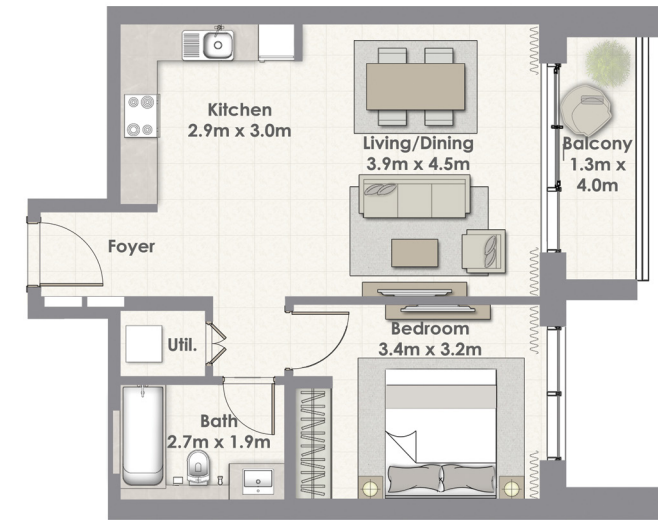
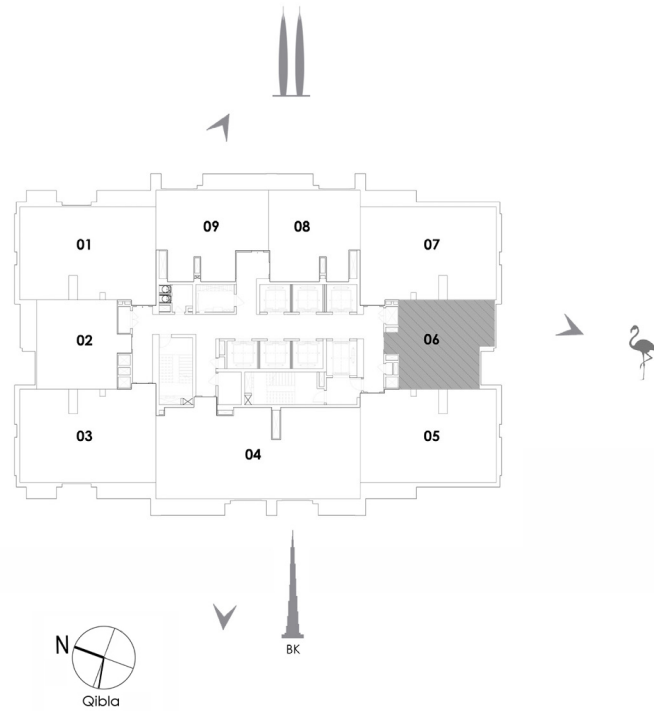
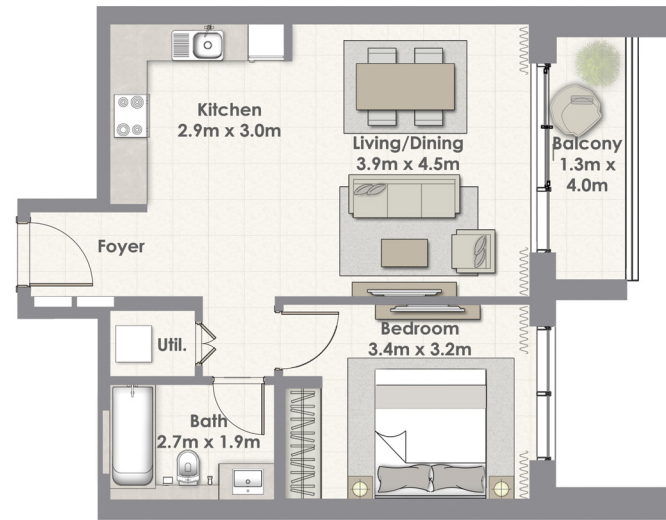
Suite Area	59.81 Sq.m. / 644 Sq.ft.
Balcony Area	5.87 Sq.m. / 63 Sq.ft.
Total Area	65.68 Sq.m. / 707 Sq.ft.



1. All materials, dimensions & drawings are approximate. 2. Information is subject to change without notice. 3. Actual suite area may vary from the stated area. 4. Drawings not to scale. 5. The developer reserves the right to make revisions/alterations without any liability whatsoever.

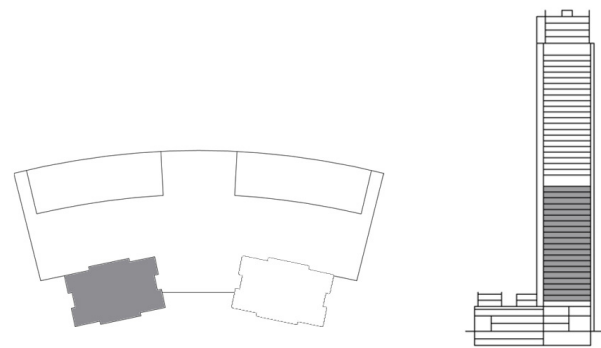
I BEDROOM TOWER 2

I BEDROOM TOWER 2



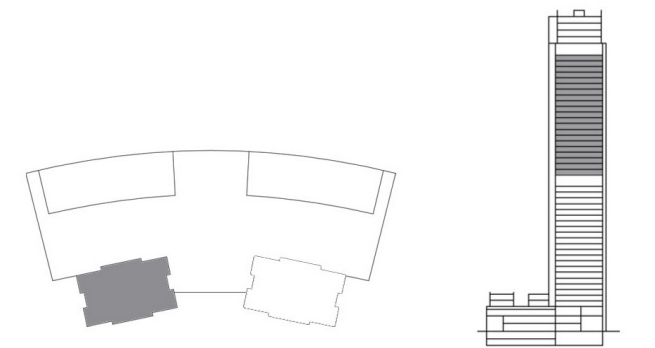
UNIT 06 / LEVEL 4-23

Suite Area	59.81 Sq.m. / 644 Sq.ft.
Balcony Area	5.87 Sq.m. / 63 Sq.ft.
Total Area	65.68 Sq.m. / 707 Sq.ft.



UNIT 06 / LEVEL 24-45

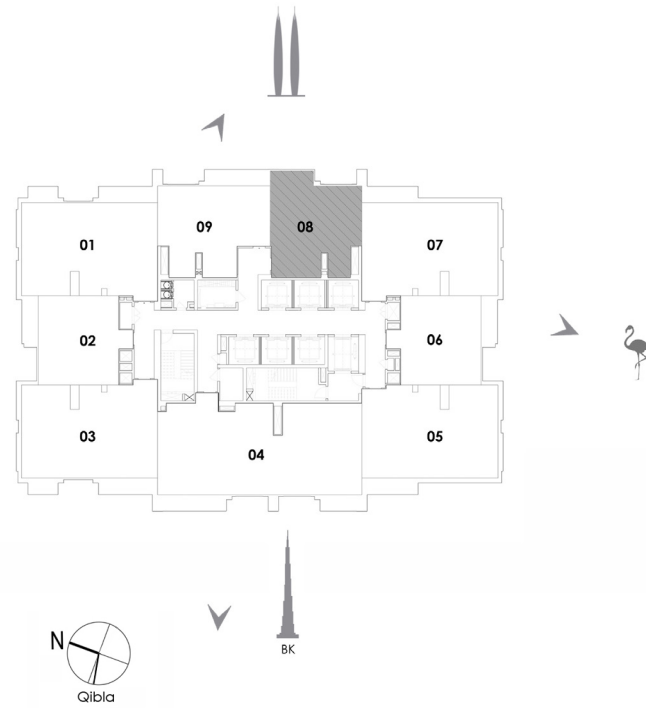
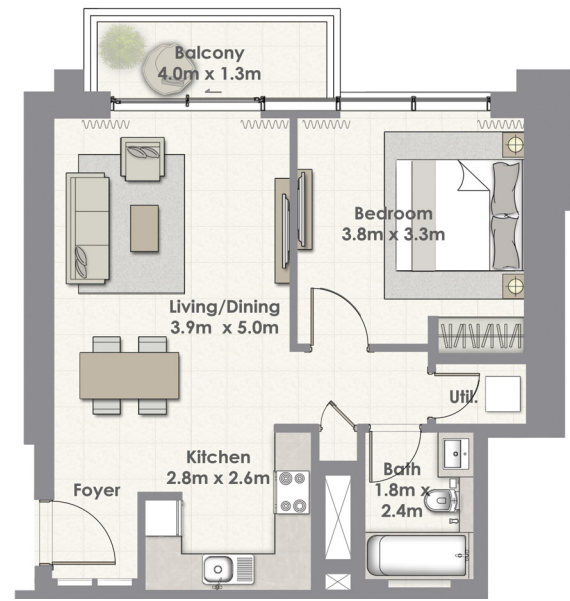
Suite Area	59.81 Sq.m. / 644 Sq.ft.
Balcony Area	5.87 Sq.m. / 63 Sq.ft.
Total Area	65.68 Sq.m. / 707 Sq.ft.



1. All materials, dimensions & drawings are approximate. 2. Information is subject to change without notice. 3. Actual suite area may vary from the stated area. 4. Drawings not to scale. 5. The developer reserves the right to make revisions/alterations without any liability whatsoever.

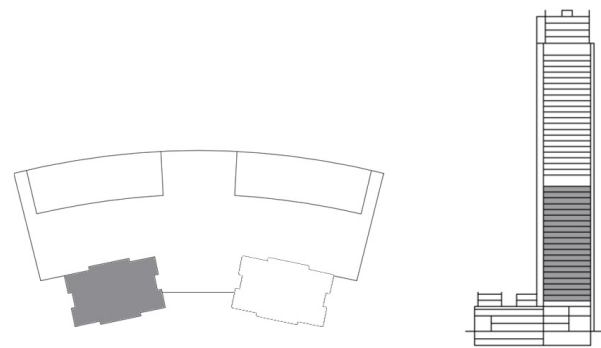
1. All materials, dimensions & drawings are approximate. 2. Information is subject to change without notice. 3. Actual suite area may vary from the stated area. 4. Drawings not to scale. 5. The developer reserves the right to make revisions/alterations without any liability whatsoever.

I BEDROOM TOWER 2



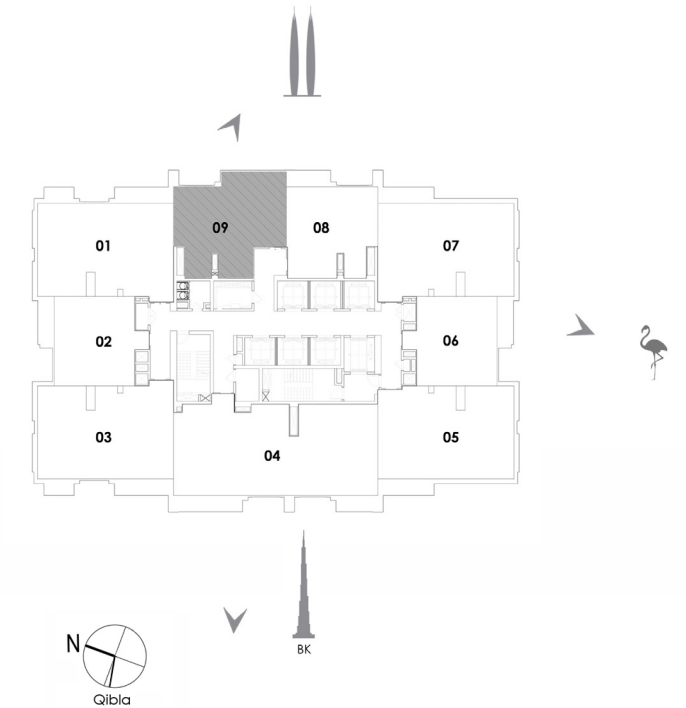
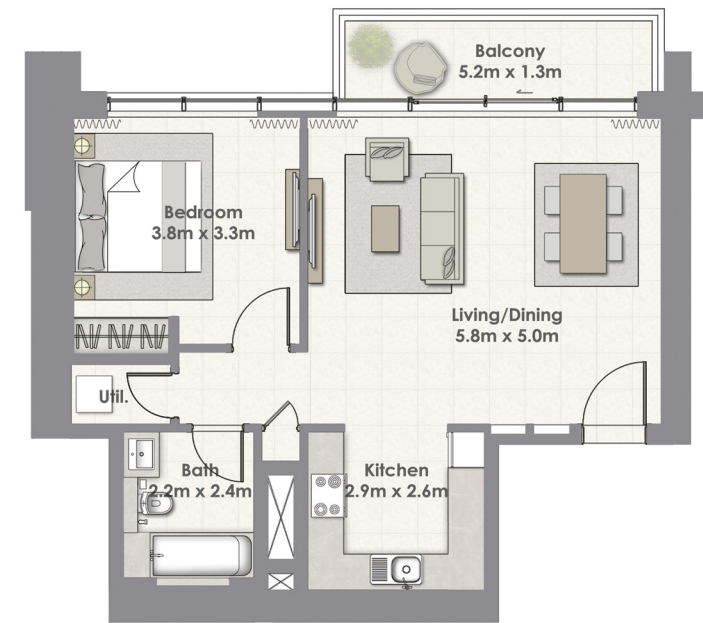
UNIT 08 / LEVEL 4-23

Suite Area	62.24 Sq.m. / 670 Sq.ft.
Balcony Area	5.52 Sq.m. / 59 Sq.ft.
Total Area	67.76 Sq.m. / 729 Sq.ft.



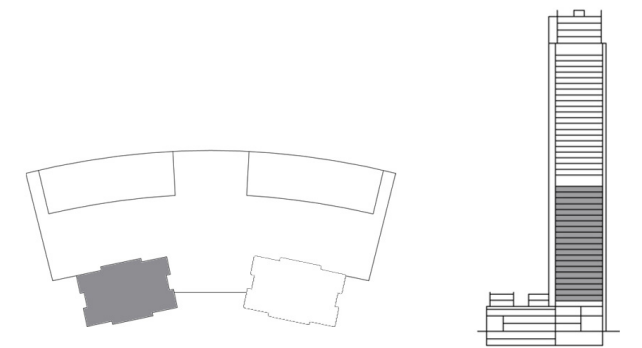
1. All materials, dimensions & drawings are approximate. 2. Information is subject to change without notice. 3. Actual suite area may vary from the stated area. 4. Drawings not to scale. 5. The developer reserves the right to make revisions/alterations without any liability whatsoever.

I BEDROOM TOWER 2



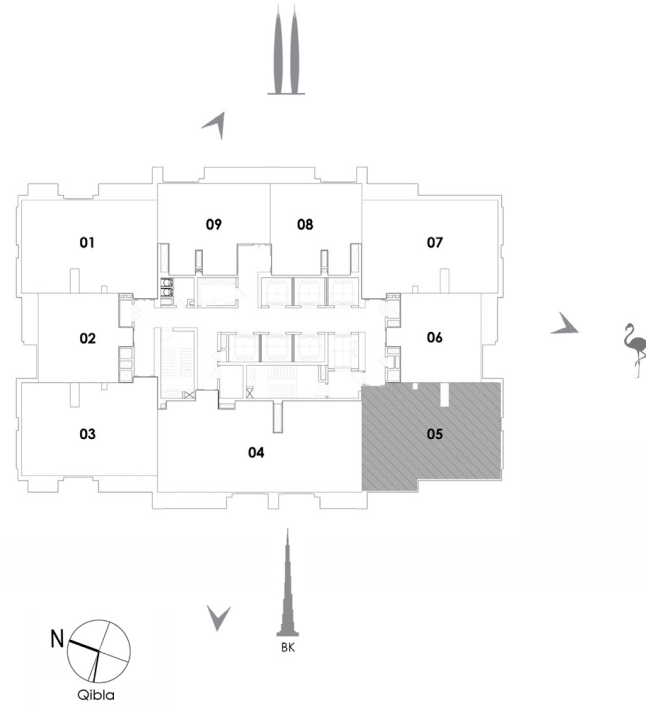
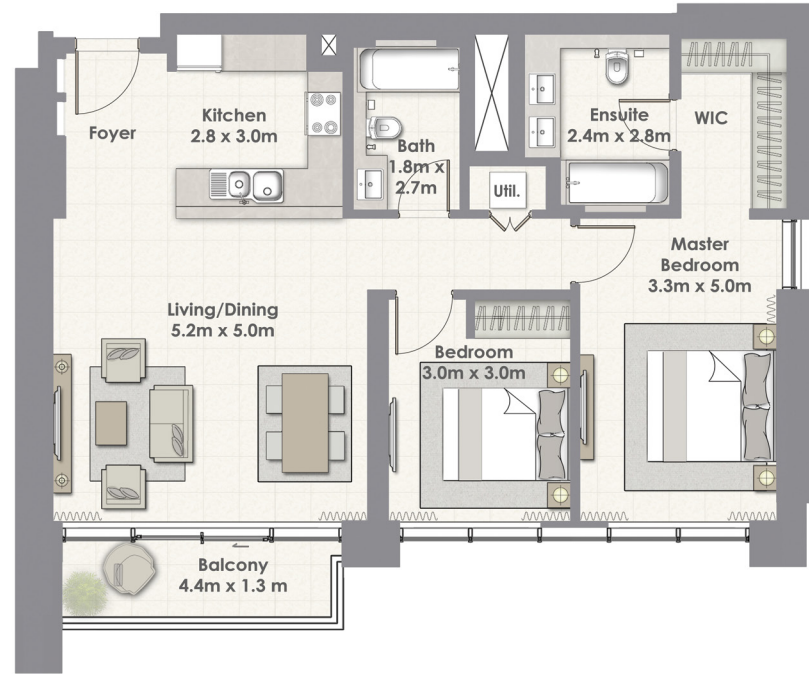
UNIT 09 / LEVEL 4-23

Suite Area	69.88 Sq.m. / 752 Sq.ft.
Balcony Area	6.89 Sq.m. / 74 Sq.ft.
Total Area	76.77 Sq.m. / 826 Sq.ft.



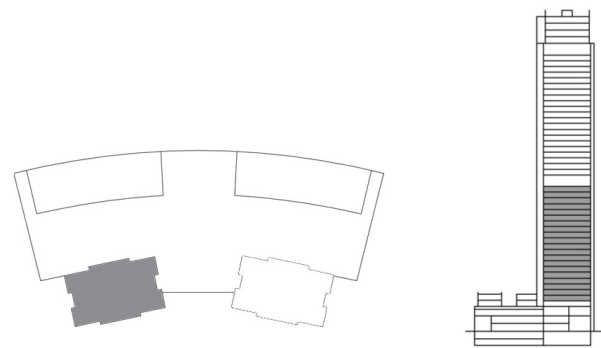
1. All materials, dimensions & drawings are approximate. 2. Information is subject to change without notice. 3. Actual suite area may vary from the stated area. 4. Drawings not to scale. 5. The developer reserves the right to make revisions/alterations without any liability whatsoever.

2 BEDROOM TOWER 2



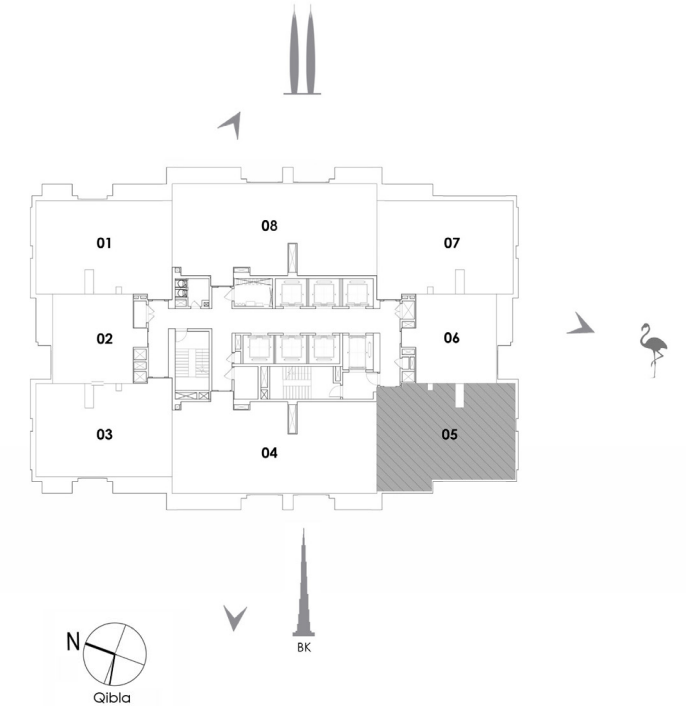
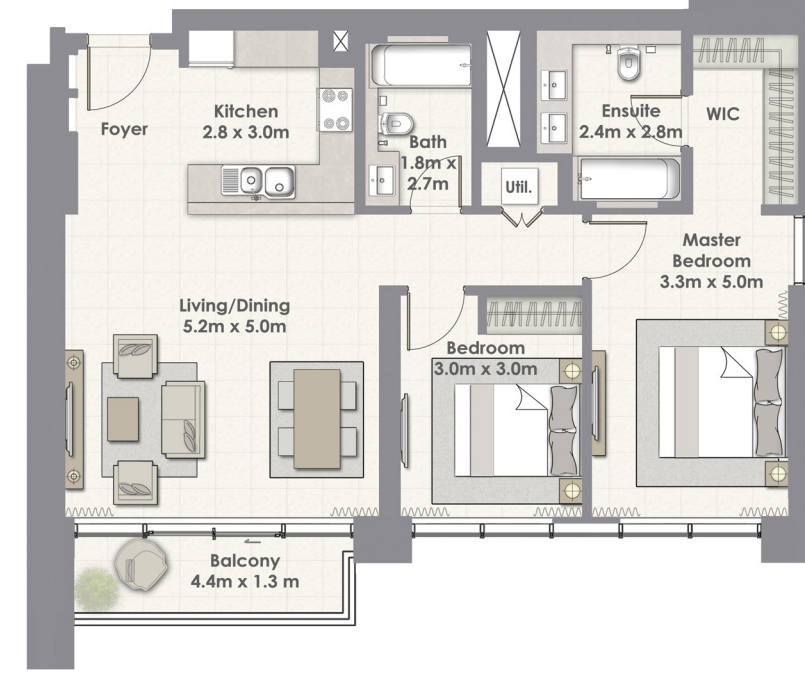
UNIT 05 / LEVEL 4-23

Suite Area	99.58 Sq.m. / 1072 Sq.ft.
Balcony Area	6.58 Sq.m. / 71 Sq.ft.
Total Area	106.16 Sq.m. / 1143 Sq.ft.



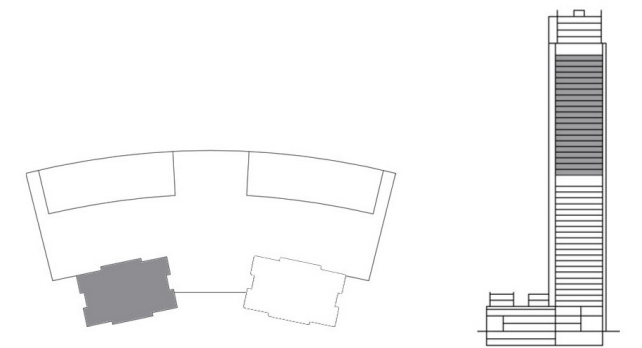
1. All materials, dimensions & drawings are approximate. 2. Information is subject to change without notice. 3. Actual suite area may vary from the stated area. 4. Drawings not to scale. 5. The developer reserves the right to make revisions/alterations without any liability whatsoever.

2 BEDROOM TOWER 2



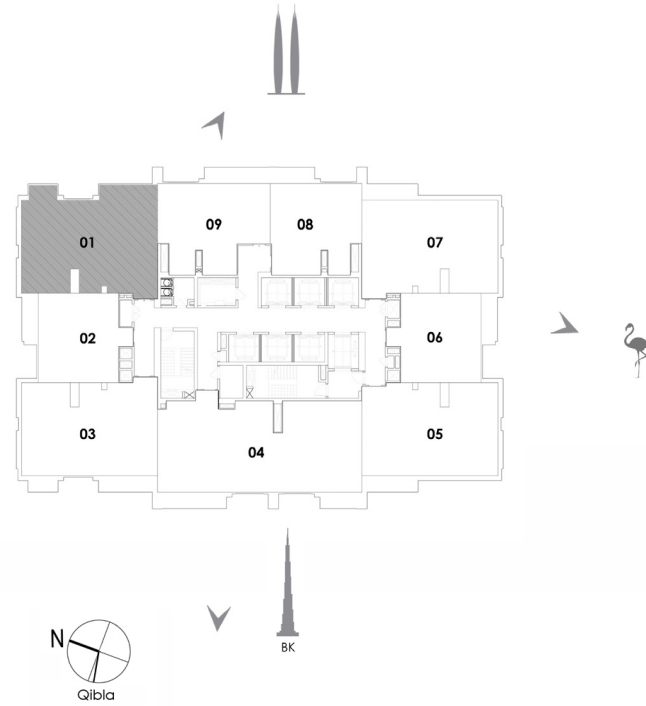
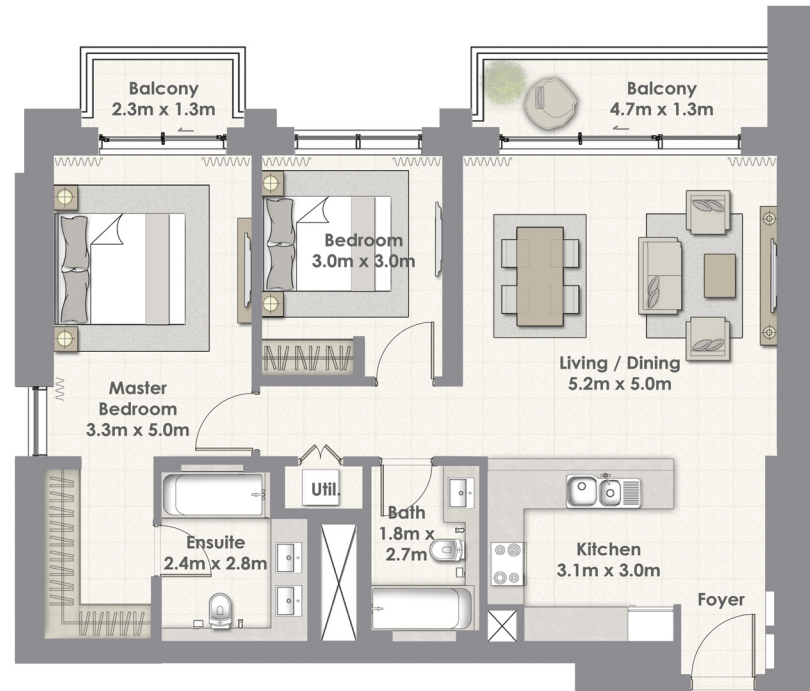
UNIT 05 / LEVEL 25-45

Suite Area	99.58 Sq.m. / 1072 Sq.ft.
Balcony Area	6.58 Sq.m. / 71 Sq.ft.
Total Area	106.16 Sq.m. / 1143 Sq.ft.



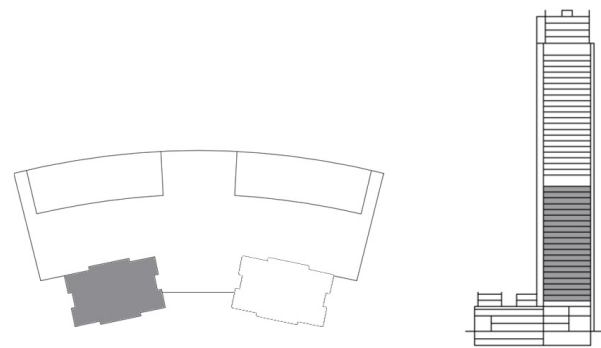
1. All materials, dimensions & drawings are approximate. 2. Information is subject to change without notice. 3. Actual suite area may vary from the stated area. 4. Drawings not to scale. 5. The developer reserves the right to make revisions/alterations without any liability whatsoever.

2 BEDROOM TOWER 2



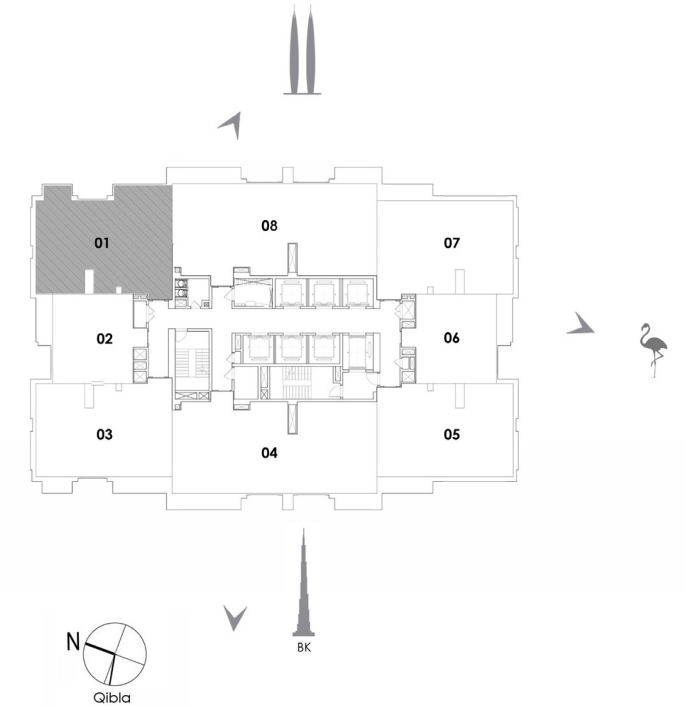
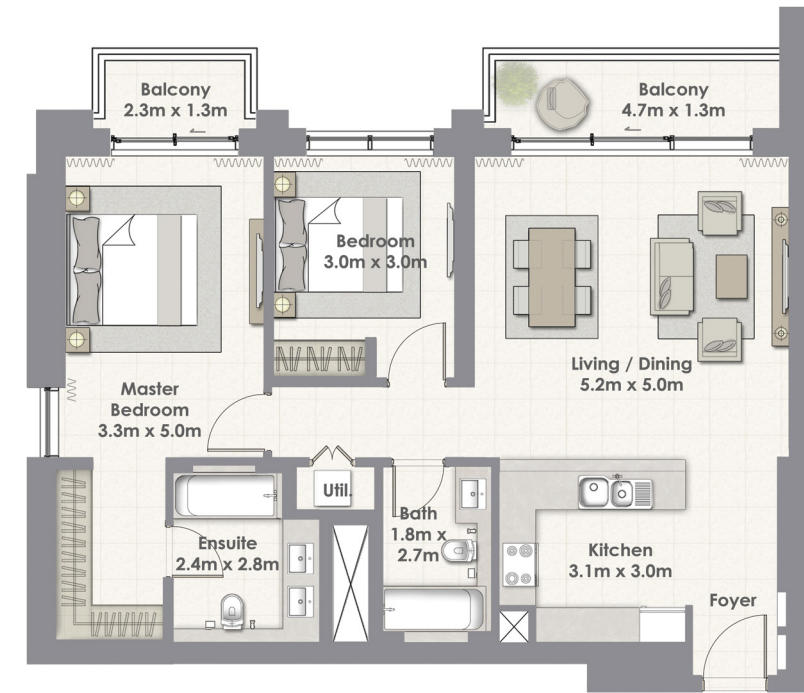
UNIT 01 / LEVEL 4-23

Suite Area	101.31 Sq.m. / 1090 Sq.ft.
Balcony Area	10.20 Sq.m. / 110 Sq.ft.
Total Area	111.51 Sq.m. / 1200 Sq.ft.



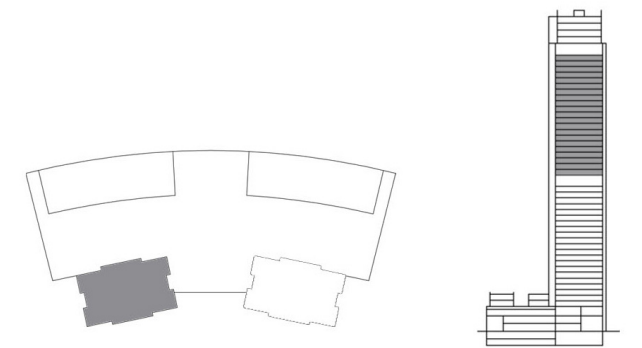
1. All materials, dimensions & drawings are approximate. 2. Information is subject to change without notice. 3. Actual suite area may vary from the stated area. 4. Drawings not to scale. 5. The developer reserves the right to make revisions/alterations without any liability whatsoever.

2 BEDROOM TOWER 2



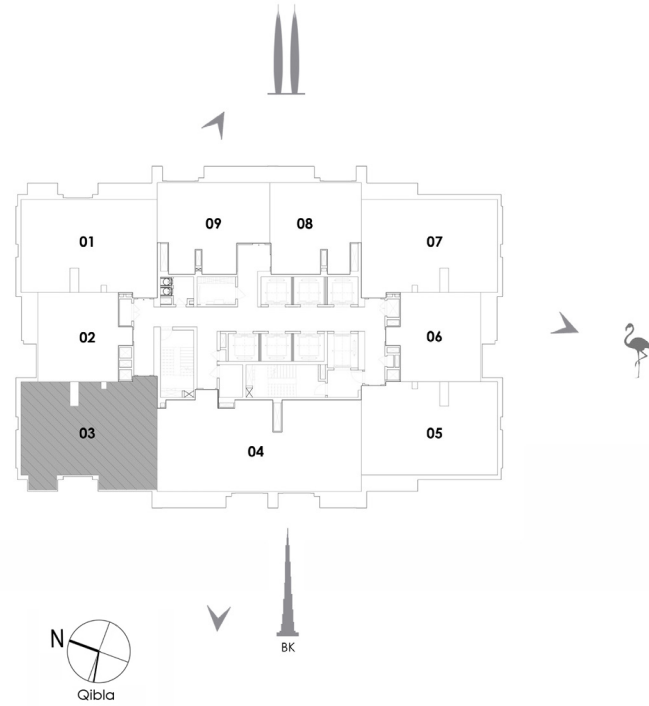
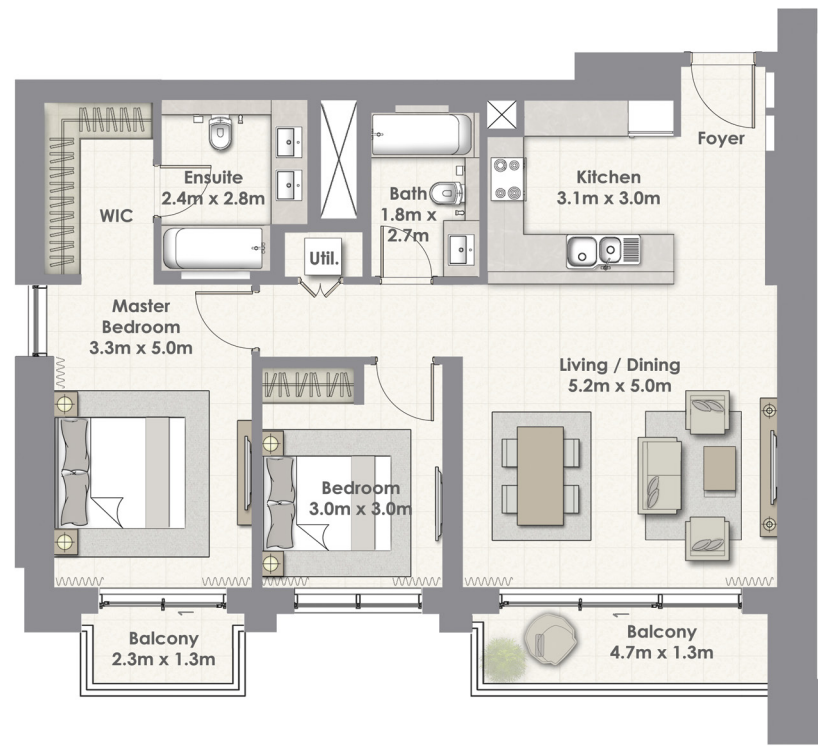
UNIT 01 / LEVEL 25-45

Suite Area	101.31 Sq.m. / 1090 Sq.ft.
Balcony Area	10.20 Sq.m. / 110 Sq.ft.
Total Area	111.51 Sq.m. / 1200 Sq.ft.



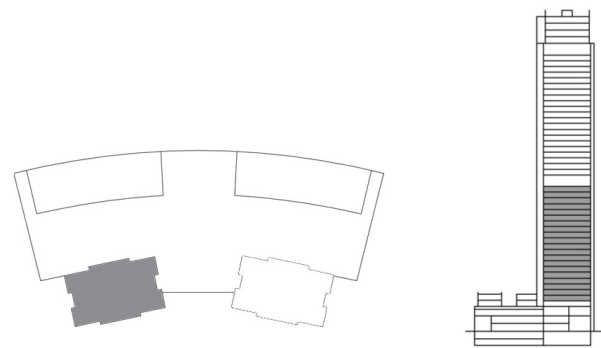
1. All materials, dimensions & drawings are approximate. 2. Information is subject to change without notice. 3. Actual suite area may vary from the stated area. 4. Drawings not to scale. 5. The developer reserves the right to make revisions/alterations without any liability whatsoever.

2 BEDROOM TOWER 2



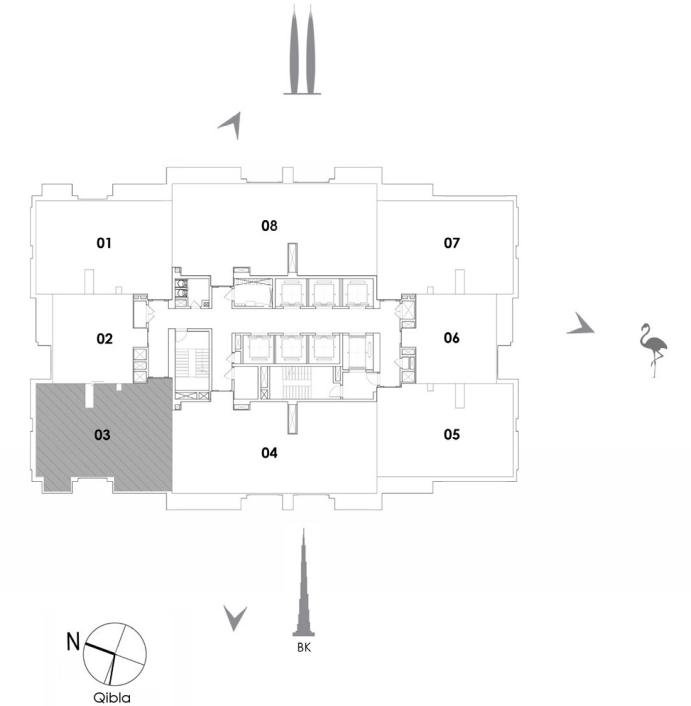
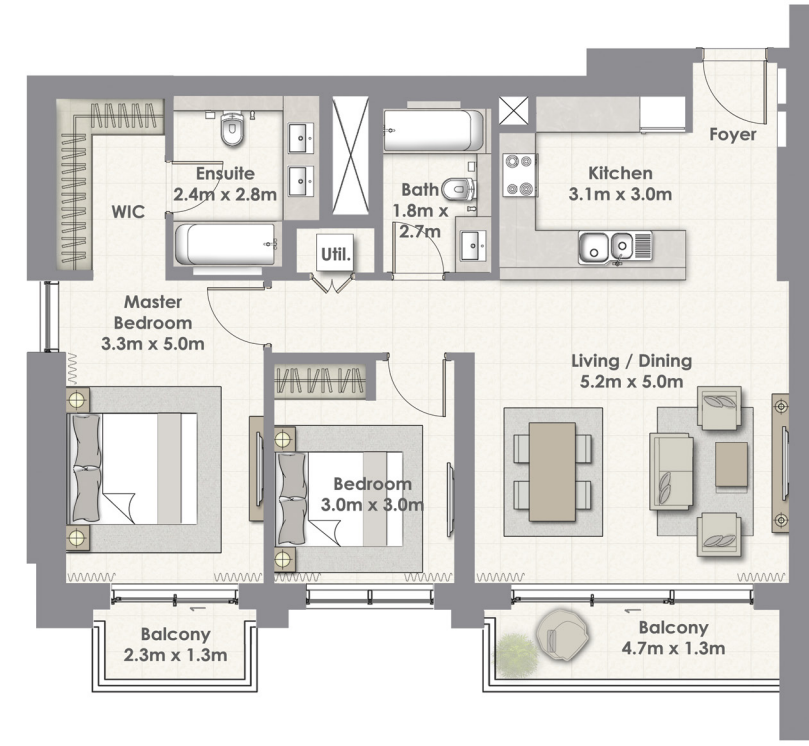
UNIT 03 / LEVEL 4-23

Suite Area	101.31 Sq.m. / 1090 Sq.ft.
Balcony Area	10.20 Sq.m. / 110 Sq.ft.
Total Area	111.51 Sq.m. / 1200 Sq.ft.



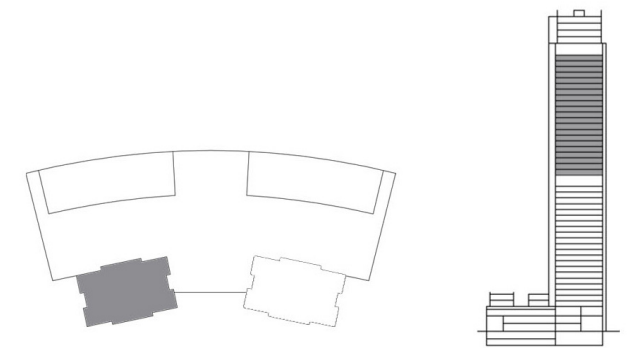
1. All materials, dimensions & drawings are approximate. 2. Information is subject to change without notice. 3. Actual suite area may vary from the stated area. 4. Drawings not to scale. 5. The developer reserves the right to make revisions/alterations without any liability whatsoever.

2 BEDROOM TOWER 2



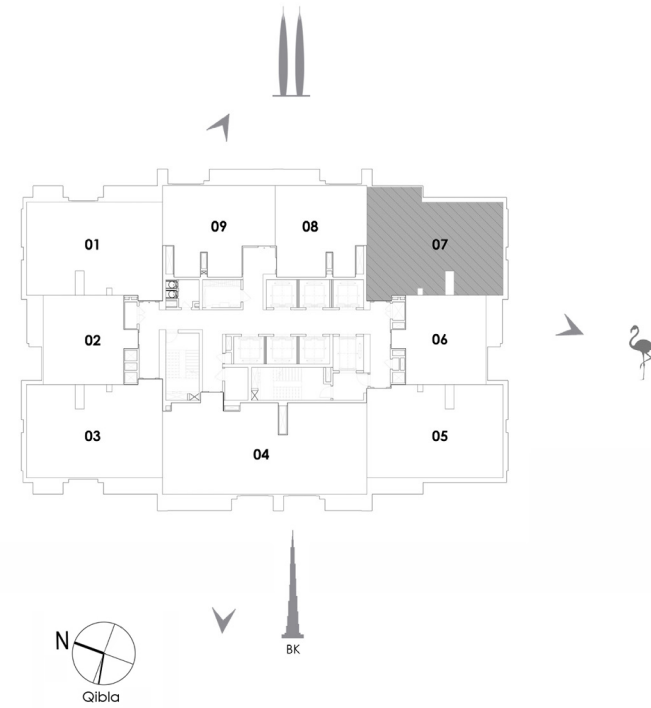
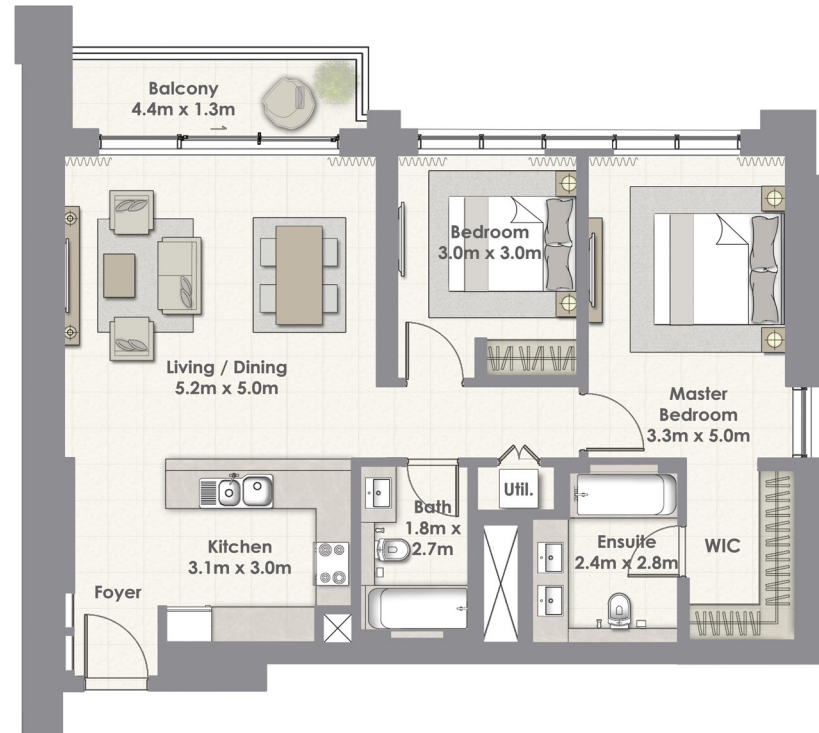
UNIT 03 / LEVEL 25-45

Suite Area	101.31 Sq.m. / 1090 Sq.ft.
Balcony Area	10.20 Sq.m. / 110 Sq.ft.
Total Area	111.51 Sq.m. / 1200 Sq.ft.



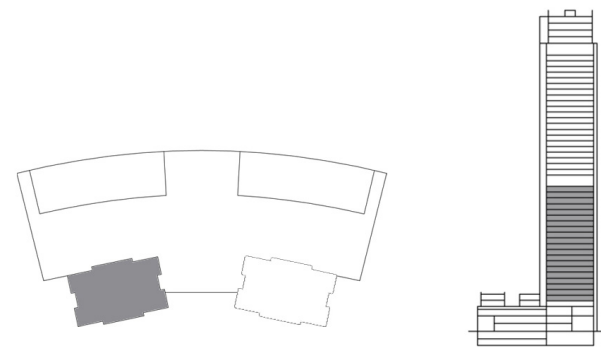
1. All materials, dimensions & drawings are approximate. 2. Information is subject to change without notice. 3. Actual suite area may vary from the stated area. 4. Drawings not to scale. 5. The developer reserves the right to make revisions/alterations without any liability whatsoever.

2 BEDROOM TOWER 2



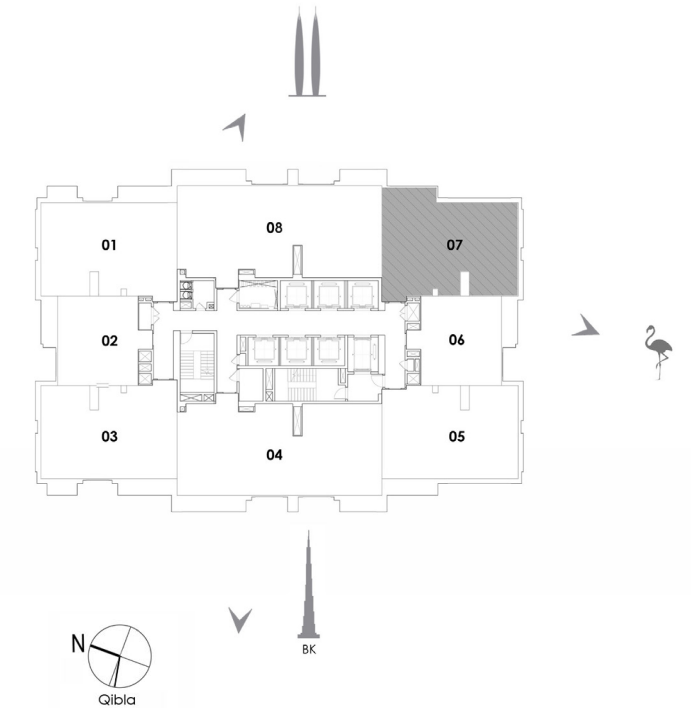
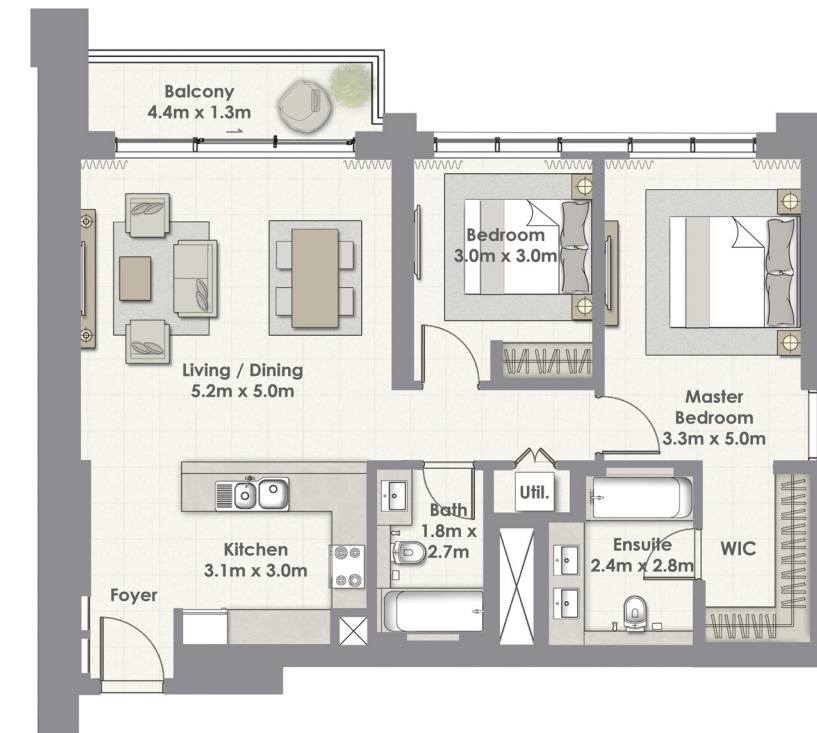
UNIT 07 / LEVEL 4-23

Suite Area	101.55 Sq.m. / 1093 Sq.ft.
Balcony Area	6.58 Sq.m. / 71 Sq.ft.
Total Area	108.13 Sq.m. / 1164 Sq.ft.



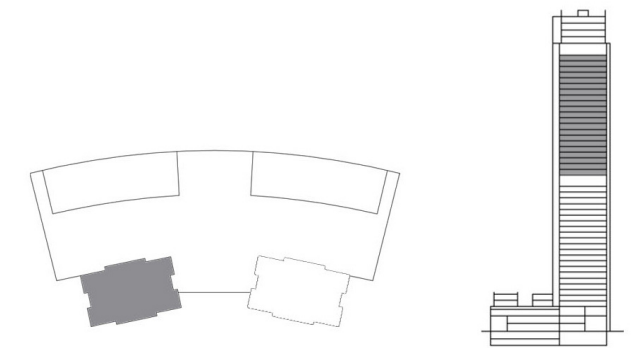
1. All materials, dimensions & drawings are approximate. 2. Information is subject to change without notice. 3. Actual suite area may vary from the stated area. 4. Drawings not to scale. 5. The developer reserves the right to make revisions/alterations without any liability whatsoever.

2 BEDROOM TOWER 2



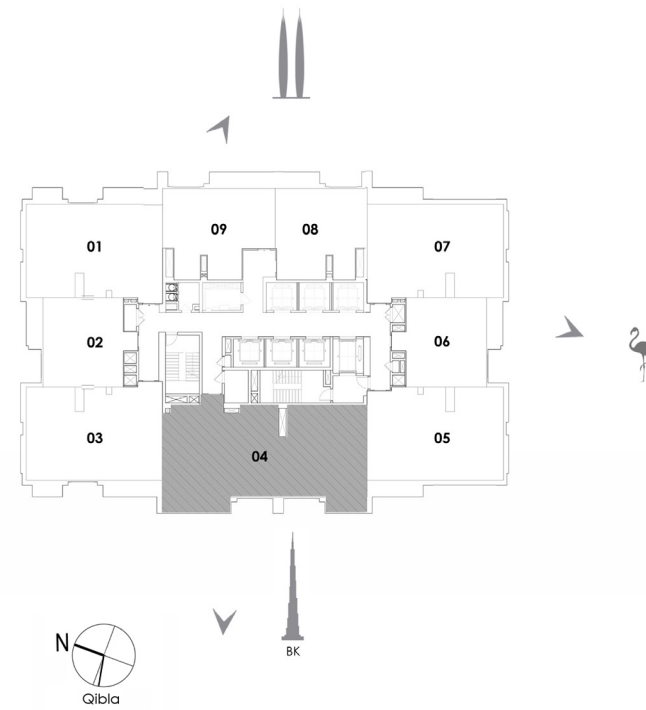
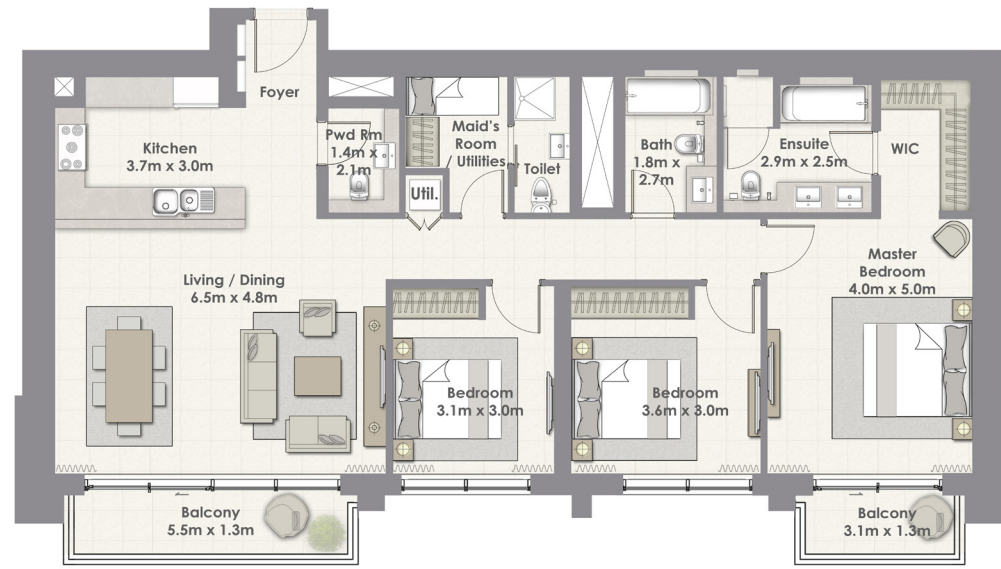
UNIT 07 / LEVEL 25-45

Suite Area	101.55 Sq.m. / 1093 Sq.ft.
Balcony Area	6.58 Sq.m. / 71 Sq.ft.
Total Area	108.13 Sq.m. / 1164 Sq.ft.



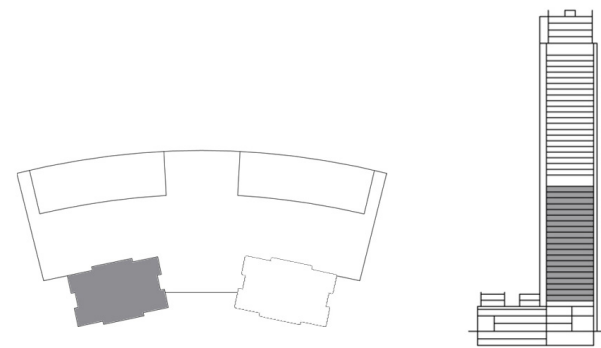
1. All materials, dimensions & drawings are approximate. 2. Information is subject to change without notice. 3. Actual suite area may vary from the stated area. 4. Drawings not to scale. 5. The developer reserves the right to make revisions/alterations without any liability whatsoever.

3 BEDROOM TOWER 2



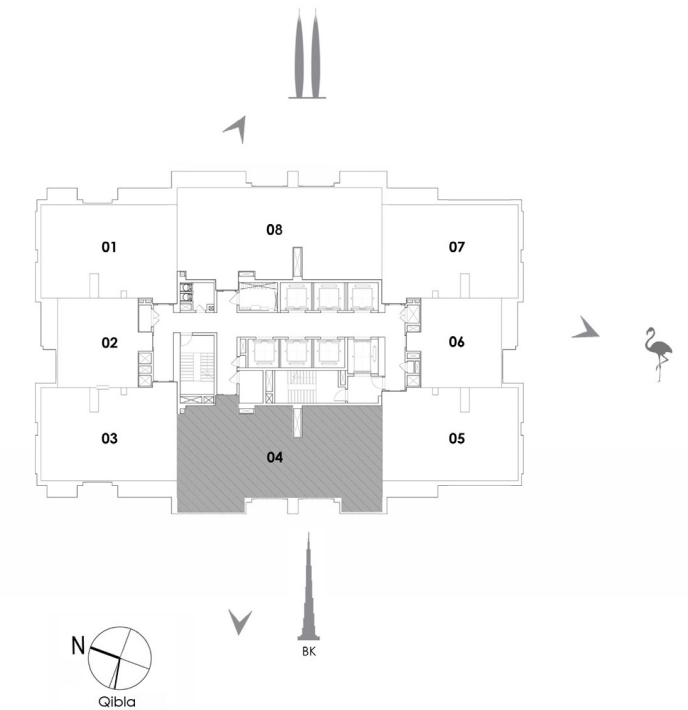
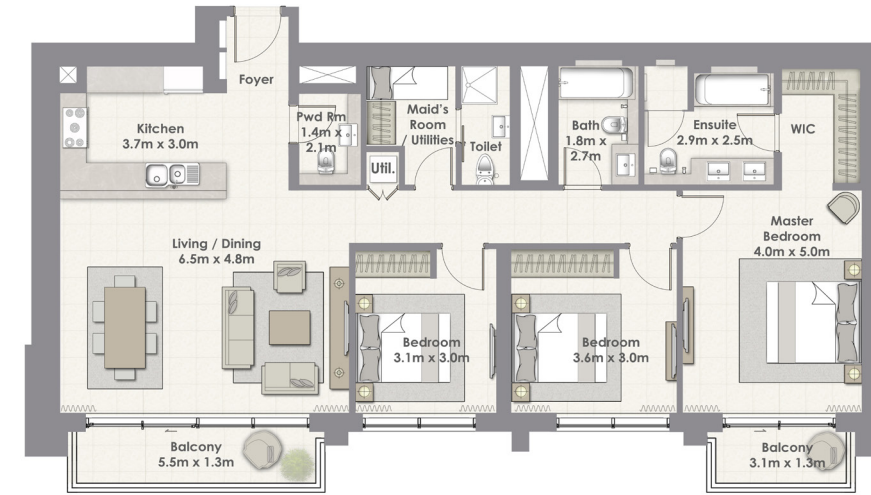
UNIT 04 / LEVEL 4-23

Suite Area	147.98 Sq.m. / 1593 Sq.ft.
Balcony Area	11.58 Sq.m. / 125 Sq.ft.
Total Area	159.56 Sq.m. / 1718 Sq.ft.



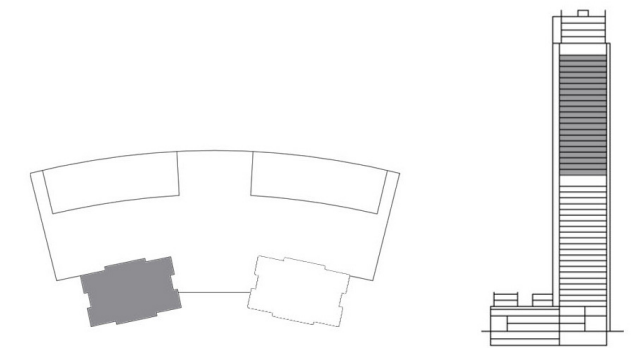
1. All materials, dimensions & drawings are approximate. 2. Information is subject to change without notice. 3. Actual suite area may vary from the stated area. 4. Drawings not to scale. 5. The developer reserves the right to make revisions/alterations without any liability whatsoever.

3 BEDROOM TOWER 2



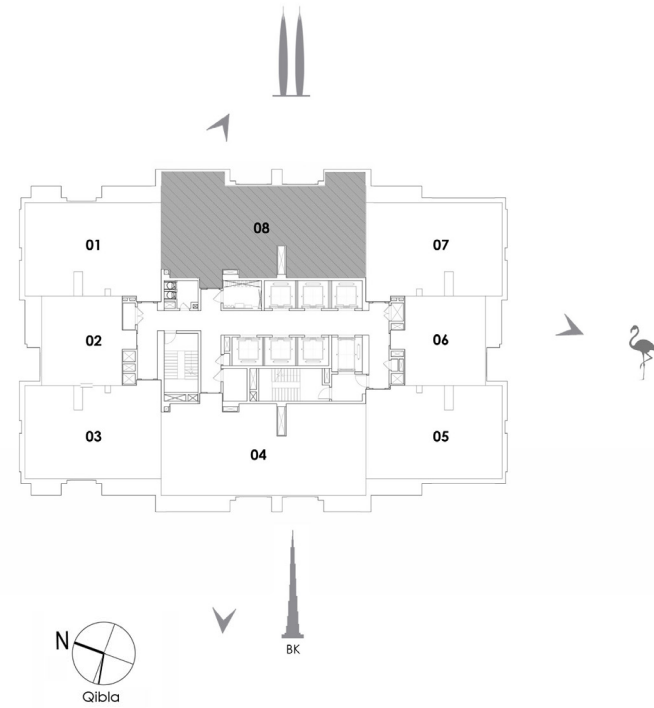
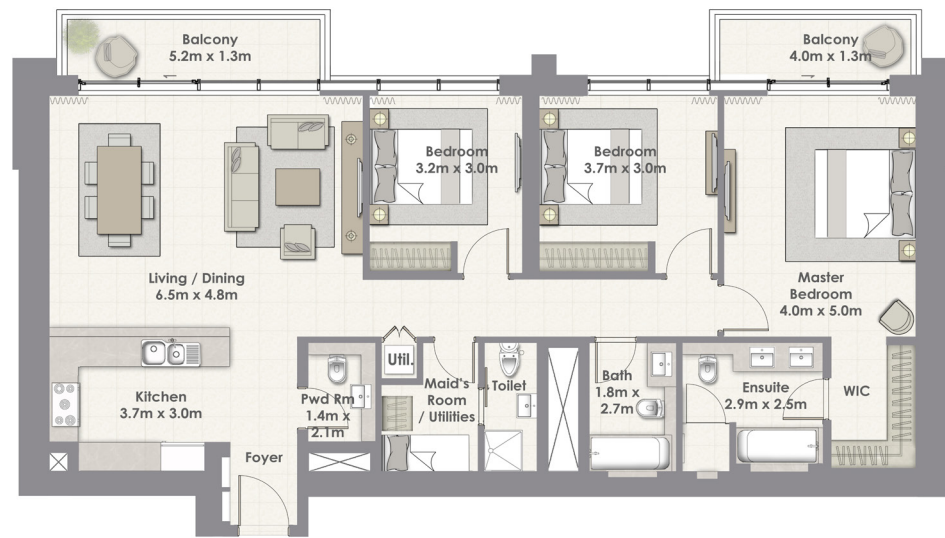
UNIT 04 / LEVEL 25-45

Suite Area	147.96 Sq.m. / 1593 Sq.ft.
Balcony Area	11.58 Sq.m. / 125 Sq.ft.
Total Area	159.54 Sq.m. / 1718 Sq.ft.



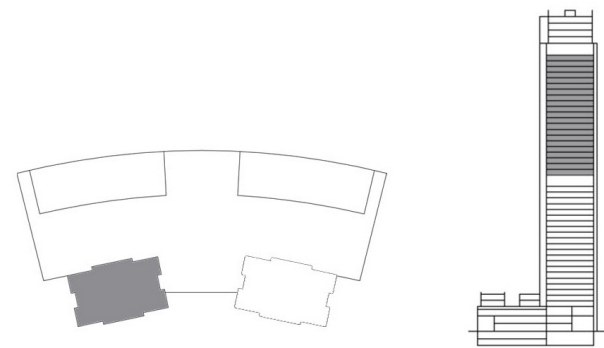
1. All materials, dimensions & drawings are approximate. 2. Information is subject to change without notice. 3. Actual suite area may vary from the stated area. 4. Drawings not to scale. 5. The developer reserves the right to make revisions/alterations without any liability whatsoever.

3 BEDROOM TOWER 2



UNIT 08 / LEVEL 25-45

Suite Area	147.96 Sq.m. / 1593 Sq.ft.
Balcony Area	12.40 Sq.m. / 133 Sq.ft.
Total Area	160.36 Sq.m. / 1726 Sq.ft.



1. All materials, dimensions & drawings are approximate. 2. Information is subject to change without notice. 3. Actual suite area may vary from the stated area. 4. Drawings not to scale. 5. The developer reserves the right to make revisions/alterations without any liability whatsoever.

للمزيد من المعلومات حول هاربر فيوز أو خور دبي، يرجى الاتصال على الأرقام التالية
للإمارات) أو ٨٠٠ ٣٦٢٢٧ (دولي)
٤ ٣٦٦ ١٦٨٨ +٩٧١ (دولي)
أو قم بزيارة مركز مبيعاتنا الإلكتروني على الموقع emaar.com أو أي من مراكز البيع في جميع أنحاء الإمارات.

دبي:

مركز مبيعات إعمار: "إعمار سكوير" مبنى ٣، الطابق الأرضي، وسط مدينة دبي
مركز مبيعات إعمار خور دبي: خور دبي

أبوظبي:

مركز مبيعات إعمار: برج النهضة، الطابق الأرضي، شارع ٤، الكورنيش، شارع المرور.

من السبت الى الخميس من ٨:٣٠ صباحاً حتى ٦:٠٠ مساءً

For more information on Harbour Views or Dubai Creek Harbour,
please call 800 36227(UAE) or +971 4 366 1688 (International).
Visit our online sales centre at emaar.com or any of our sales centres across the UAE.

Dubai:

Emaar Square Sales Centre: Building 3, Ground Floor, Emaar Square, Downtown Dubai
Dubai Creek Harbour Sales Centre: Ras Al Khor

Abu Dhabi:

Emaar Sales Centre: Al Nahda Tower, Ground Floor, 4th Street, Corniche, Al Muroor Road.

Open from Saturday – Thursday, from 8.30am – 6.00pm



emaar.com

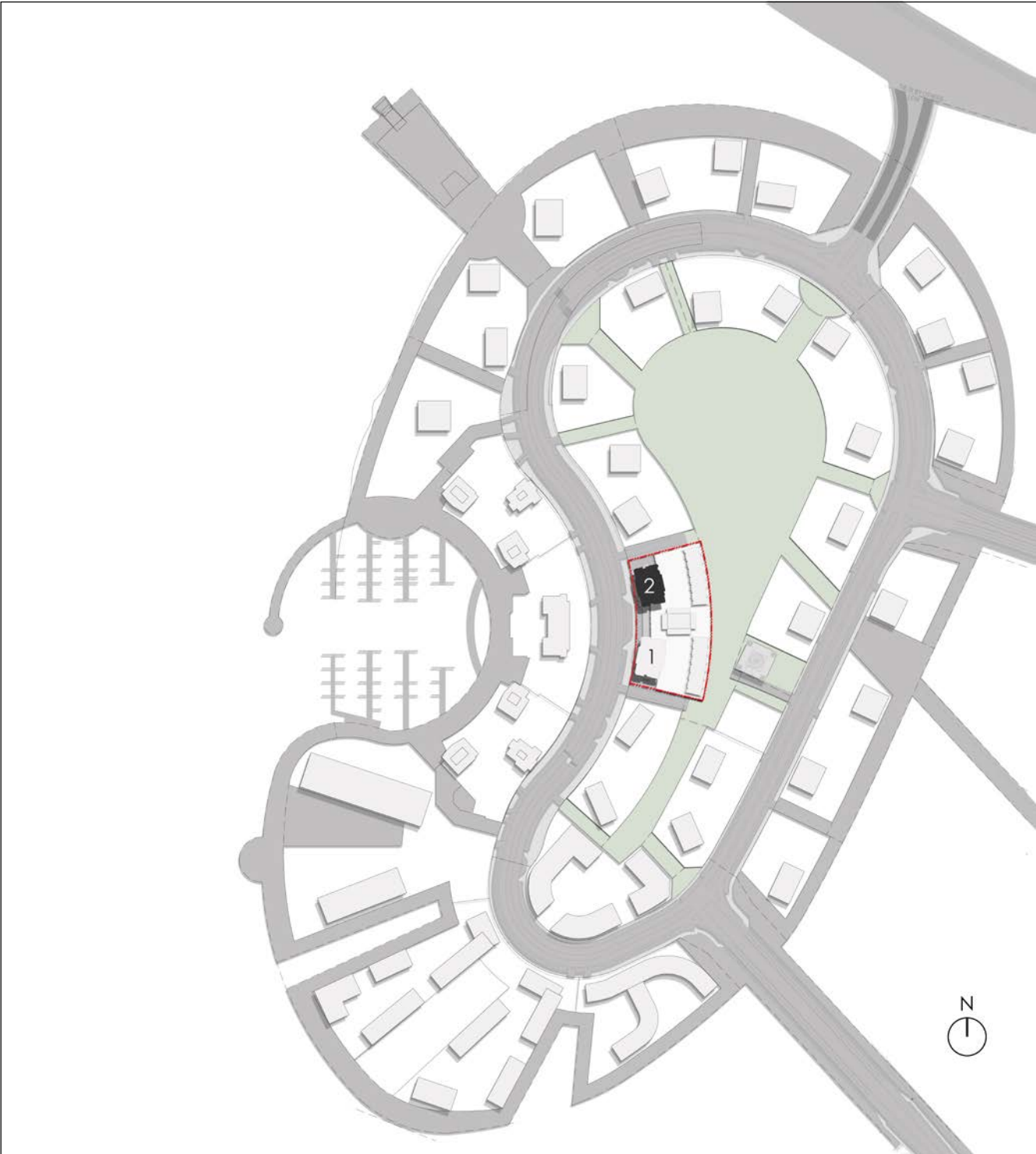
دُبَايَ كَرِيكْ هَارْبُورْ
DUBAI CREEK HARBOUR

HARBOUR VIEWS

FLOOR PLANS
(TOWER 2)

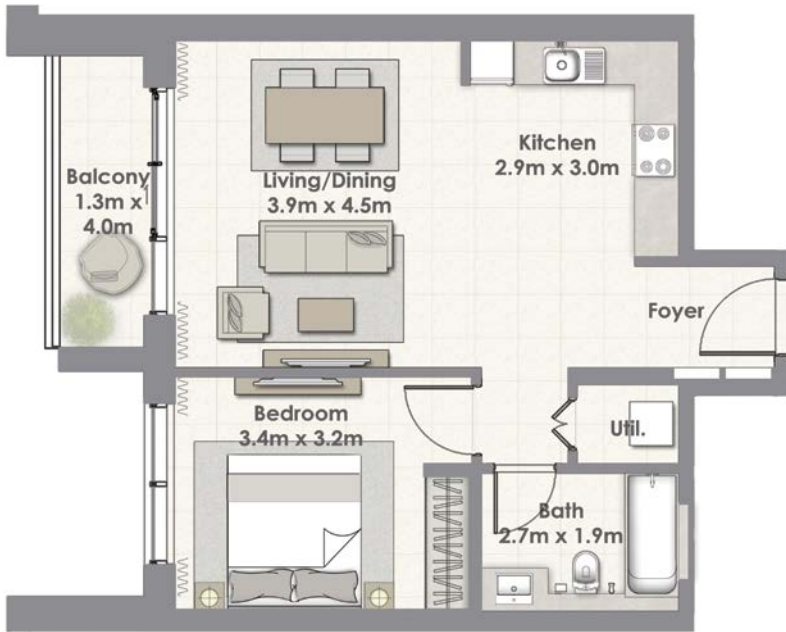
HARBOUR VIEWS

THE ISLAND DISTRICT SITE PLAN



HARBOUR VIEWS

1 BEDROOM TOWER 2

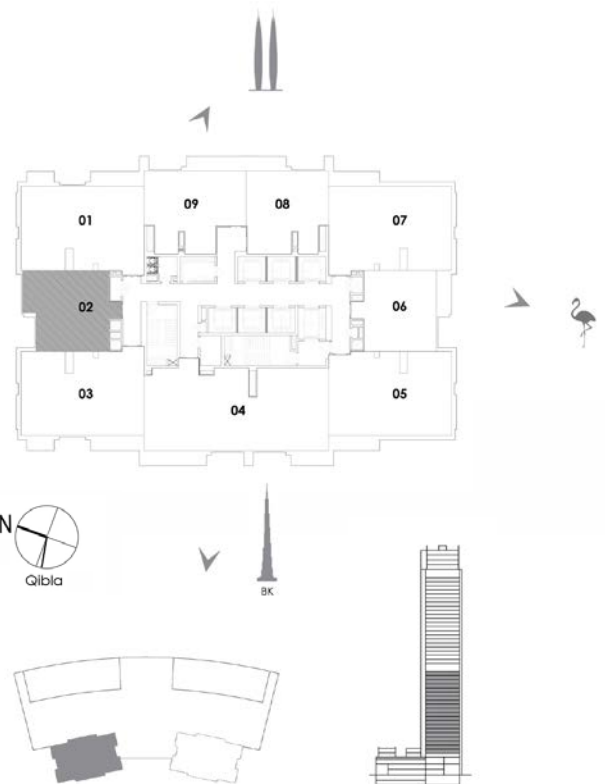


UNIT 02 / LEVEL 4-23

Suite Area 59.81 Sq.m. / 644 Sq.ft.

Balcony Area 5.87 Sq.m. / 63 Sq.ft.

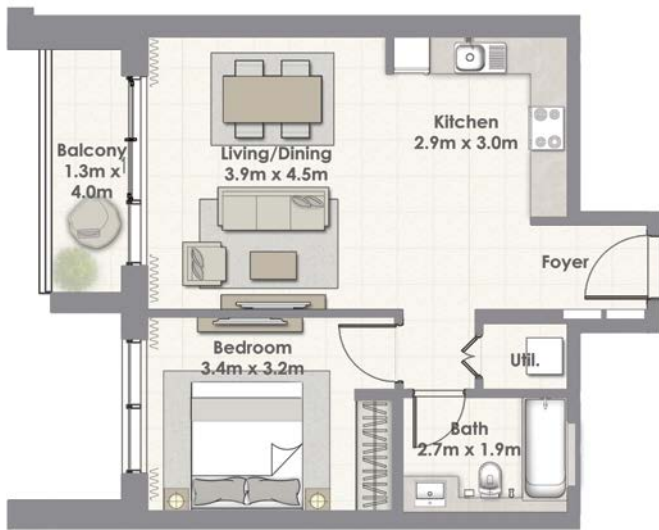
Total Area 65.68 Sq.m. / 707 Sq.ft.



1. All materials, dimensions & drawings are approximate. 2. Information is subject to change without notice. 3. Actual suite area may vary from the stated area. 4. Drawings not to scale. 5. The developer reserves the right to make revisions/alterations without any liability whatsoever.

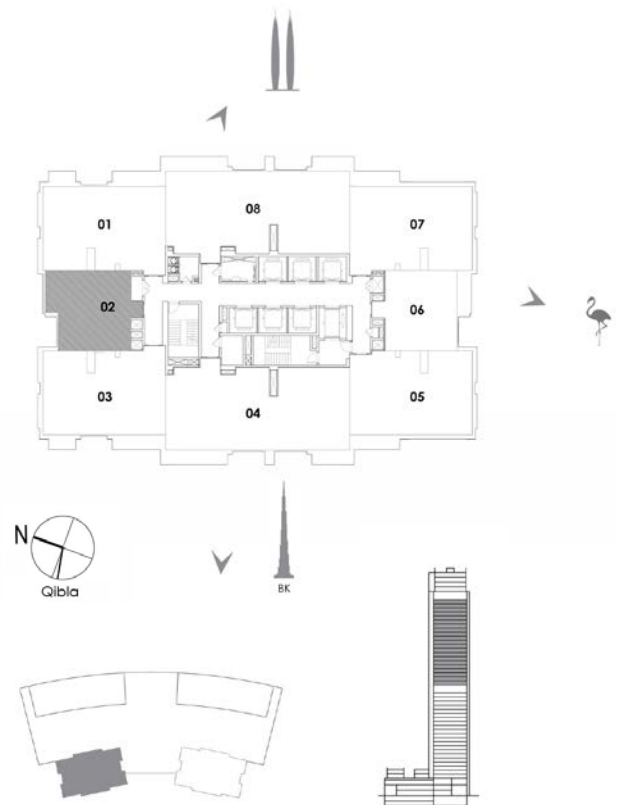
HARBOUR VIEWS

1 BEDROOM TOWER 2



UNIT 02 / LEVEL 25-45

Suite Area	59.81 Sq.m. / 644 Sq.ft.
Balcony Area	5.87 Sq.m. / 63 Sq.ft.
Total Area	65.68 Sq.m. / 707 Sq.ft.



HARBOUR VIEWS

1 BEDROOM TOWER 2

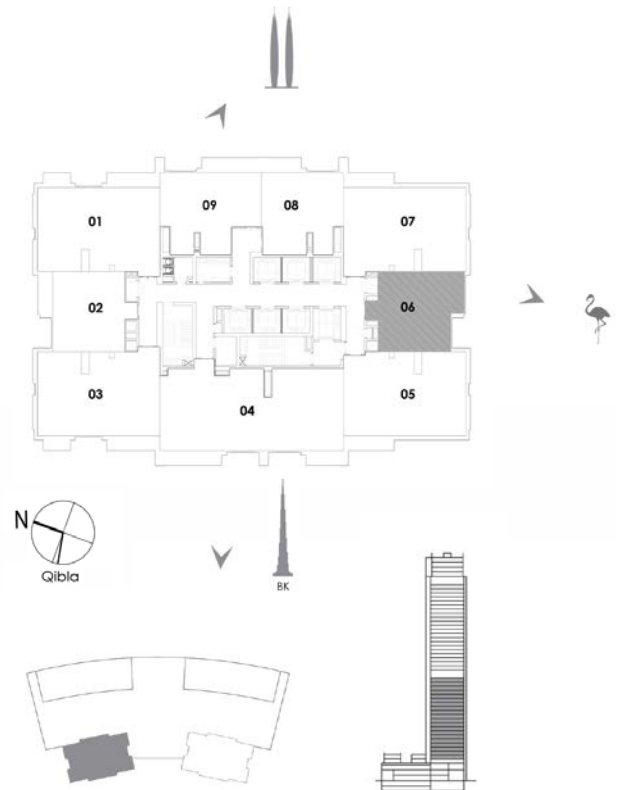


UNIT 06 / LEVEL 4-23

Suite Area 59.81 Sq.m. / 644 Sq.ft.

Balcony Area 5.87 Sq.m. / 63 Sq.ft.

Total Area 65.68 Sq.m. / 707 Sq.ft.



1. All materials, dimensions & drawings are approximate. 2. Information is subject to change without notice. 3. Actual suite area may vary from the stated area. 4. Drawings not to scale. 5. The developer reserves the right to make revisions/alterations without any liability whatsoever.



HARBOUR VIEWS

1 BEDROOM TOWER 2

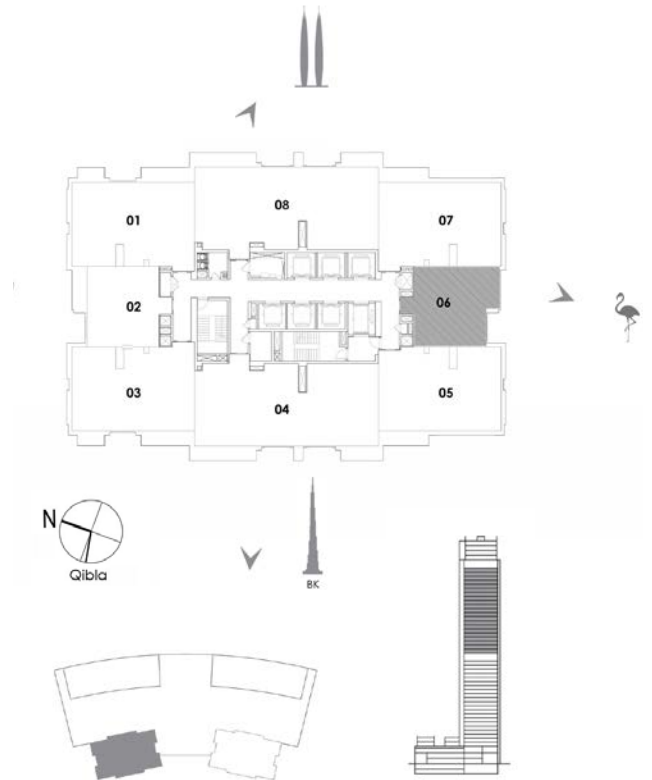


UNIT 06 / LEVEL 24-45

Suite Area 59.81 Sq.m. / 644 Sq.ft.

Balcony Area 5.87 Sq.m. / 63 Sq.ft.

Total Area 65.68 Sq.m. / 707 Sq.ft.



1. All materials, dimensions & drawings are approximate. 2. Information is subject to change without notice. 3. Actual suite area may vary from the stated area. 4. Drawings not to scale. 5. The developer reserves the right to make revisions/alterations without any liability whatsoever.

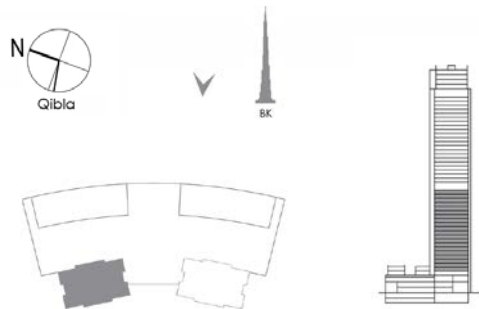
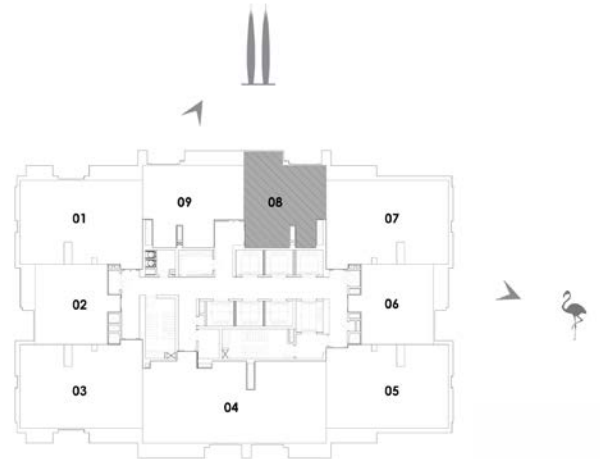
HARBOUR VIEWS

1 BEDROOM TOWER 2



UNIT 08 / LEVEL 4-23

Suite Area	62.24 Sq.m. / 670 Sq.ft.
Balcony Area	5.52 Sq.m. / 59 Sq.ft.
Total Area	67.76 Sq.m. / 729 Sq.ft.



1. All materials, dimensions & drawings are approximate. 2. Information is subject to change without notice. 3. Actual suite area may vary from the stated area. 4. Drawings not to scale. 5. The developer reserves the right to make revisions/alterations without any liability whatsoever.

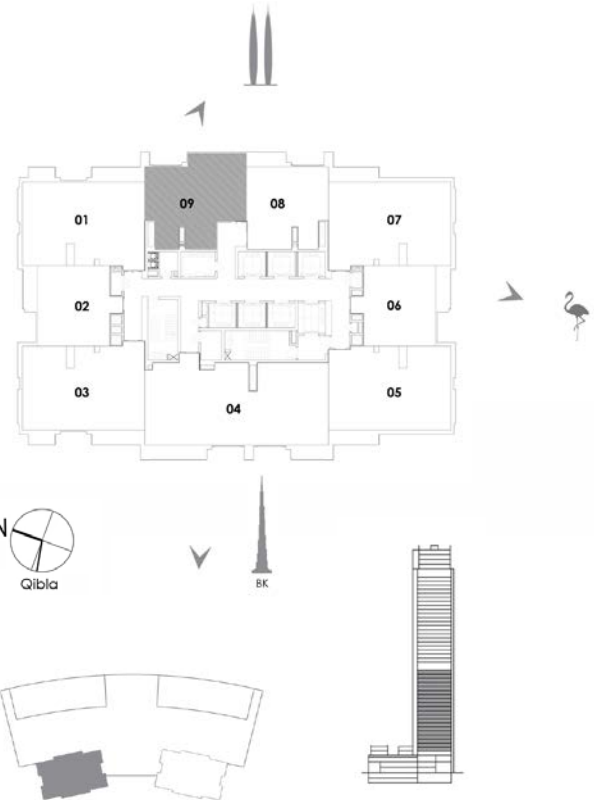
HARBOUR VIEWS

1 BEDROOM TOWER 2



UNIT 09 / LEVEL 4-23

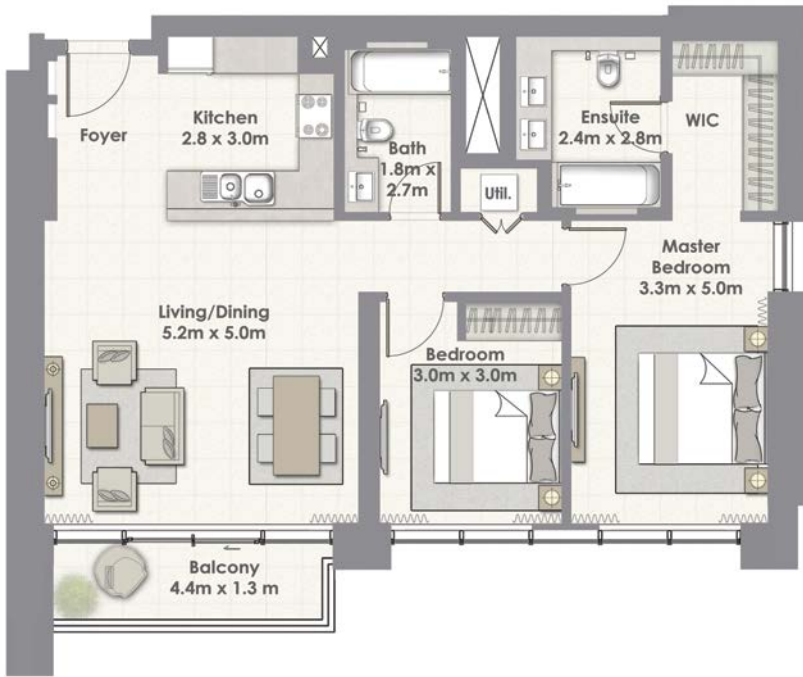
Suite Area	69.88 Sq.m. / 752 Sq.ft.
Balcony Area	6.89 Sq.m. / 74 Sq.ft.
Total Area	76.77 Sq.m. / 826 Sq.ft.



1. All materials, dimensions & drawings are approximate. 2. Information is subject to change without notice. 3. Actual suite area may vary from the stated area. 4. Drawings not to scale. 5. The developer reserves the right to make revisions/alterations without any liability whatsoever.

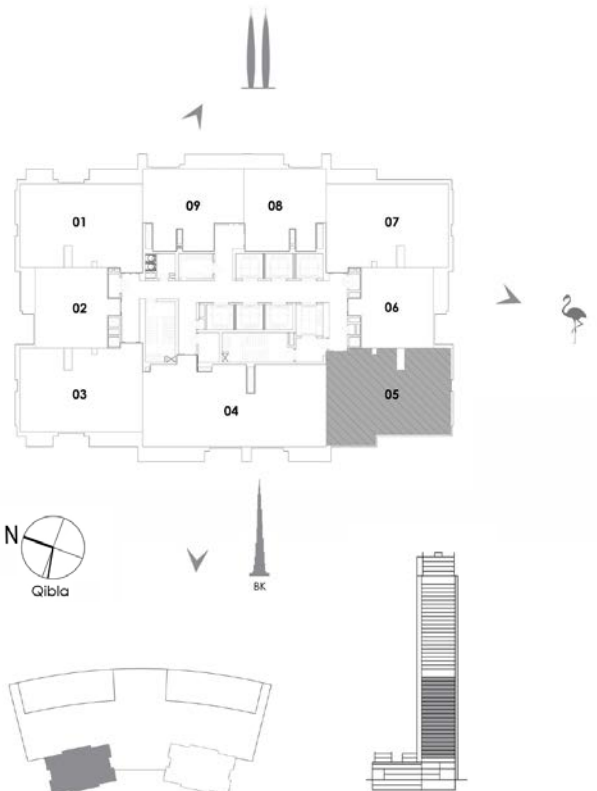
HARBOUR VIEWS

2 BEDROOM TOWER 2



UNIT 05 / LEVEL 4-23

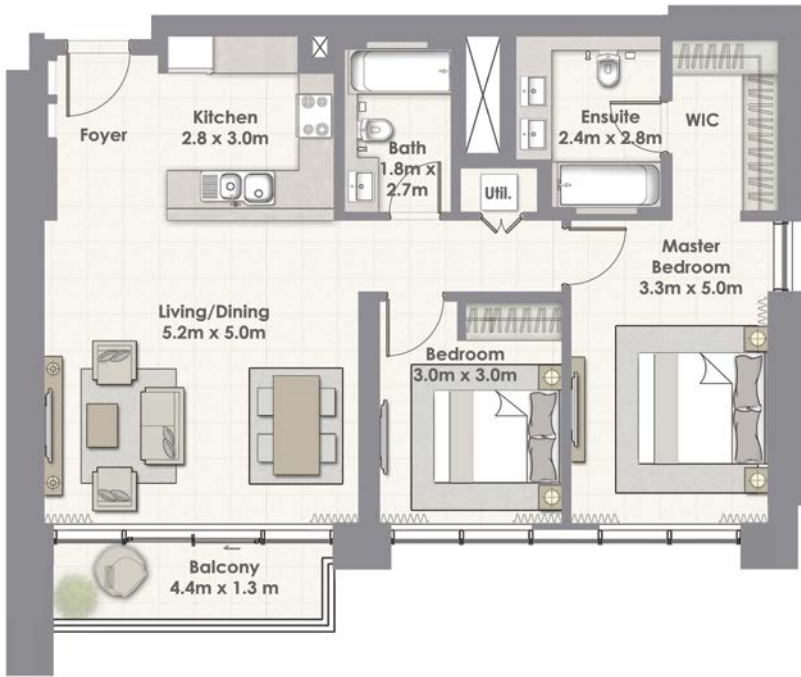
Suite Area	99.58 Sq.m. / 1072 Sq.ft.
Balcony Area	6.58 Sq.m. / 71 Sq.ft.
Total Area	106.16 Sq.m. / 1143 Sq.ft.



1. All materials, dimensions & drawings are approximate. 2. Information is subject to change without notice. 3. Actual suite area may vary from the stated area. 4. Drawings not to scale. 5. The developer reserves the right to make revisions/alterations without any liability whatsoever.

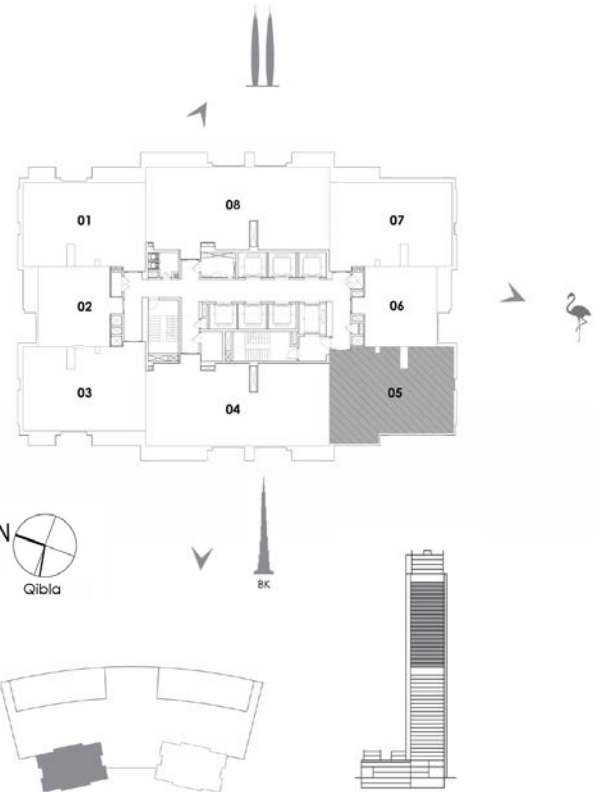
HARBOUR VIEWS

2 BEDROOM TOWER 2



UNIT 05 / LEVEL 25-45

Suite Area	99.58 Sq.m. / 1072 Sq.ft.
Balcony Area	6.58 Sq.m. / 71 Sq.ft.
Total Area	106.16 Sq.m. / 1143 Sq.ft.

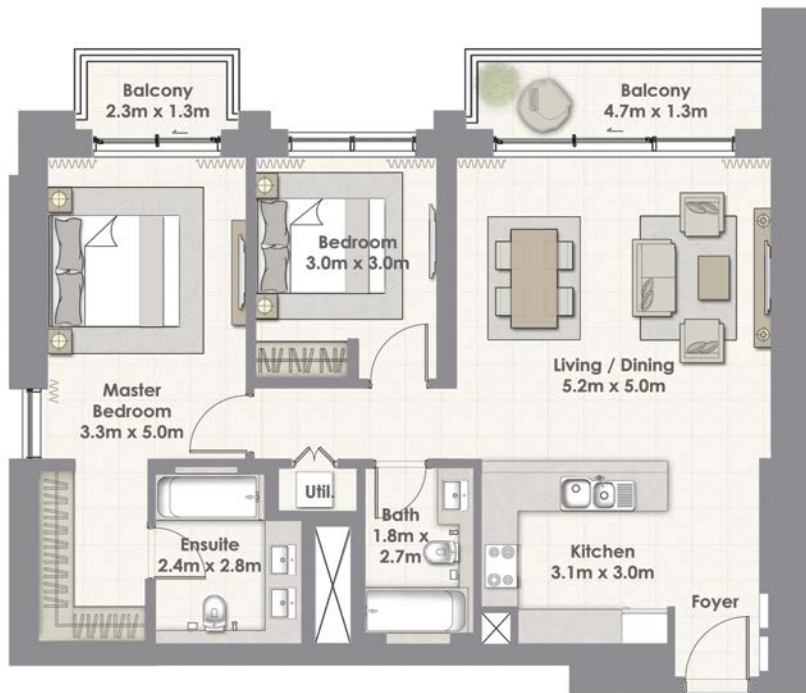


1. All materials, dimensions & drawings are approximate. 2. Information is subject to change without notice. 3. Actual suite area may vary from the stated area. 4. Drawings not to scale. 5. The developer reserves the right to make revisions/alterations without any liability whatsoever.



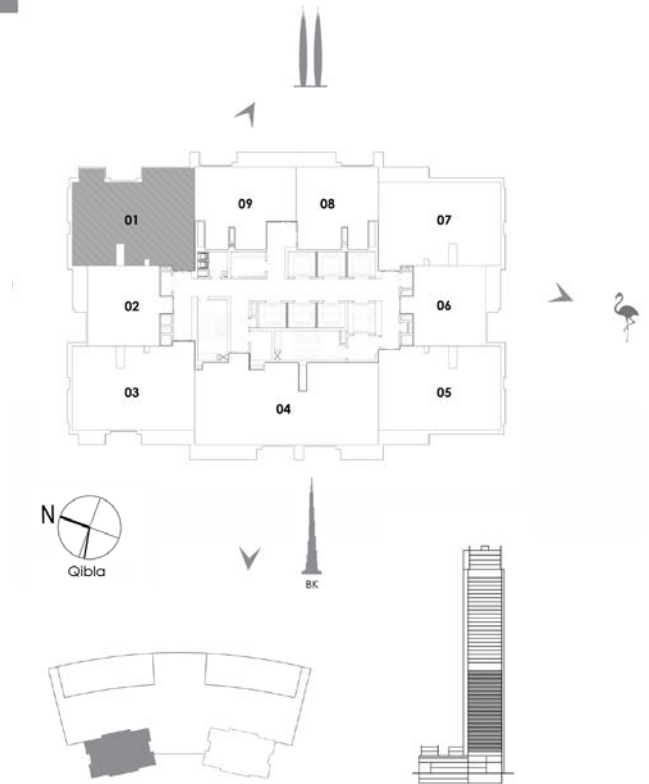
HARBOUR VIEWS

2 BEDROOM TOWER 2



UNIT 01 / LEVEL 4-23

Suite Area	101.31 Sq.m. / 1090 Sq.ft.
Balcony Area	10.20 Sq.m. / 110 Sq.ft.
Total Area	111.51 Sq.m. / 1200 Sq.ft.

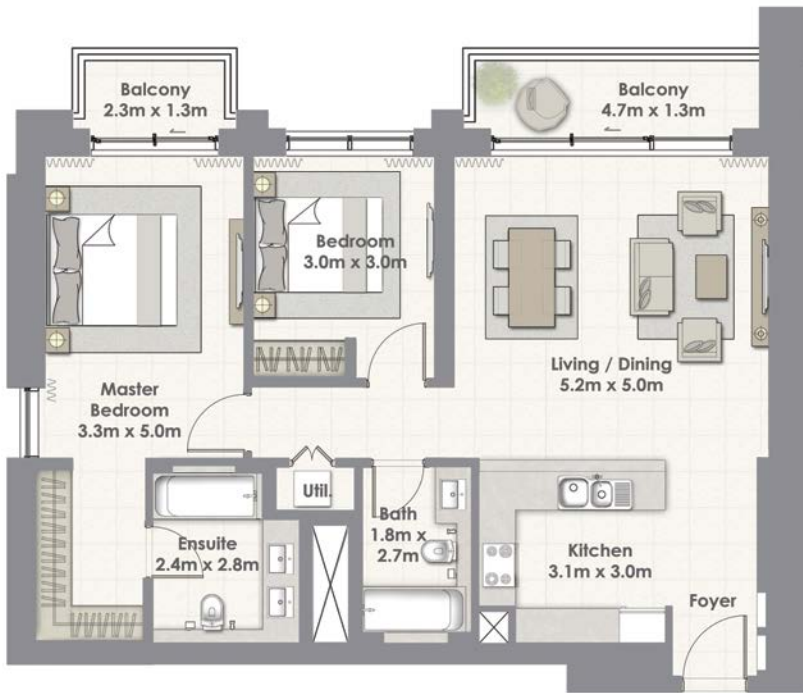


1. All materials, dimensions & drawings are approximate. 2. Information is subject to change without notice. 3. Actual suite area may vary from the stated area. 4. Drawings not to scale. 5. The developer reserves the right to make revisions/alterations without any liability whatsoever.



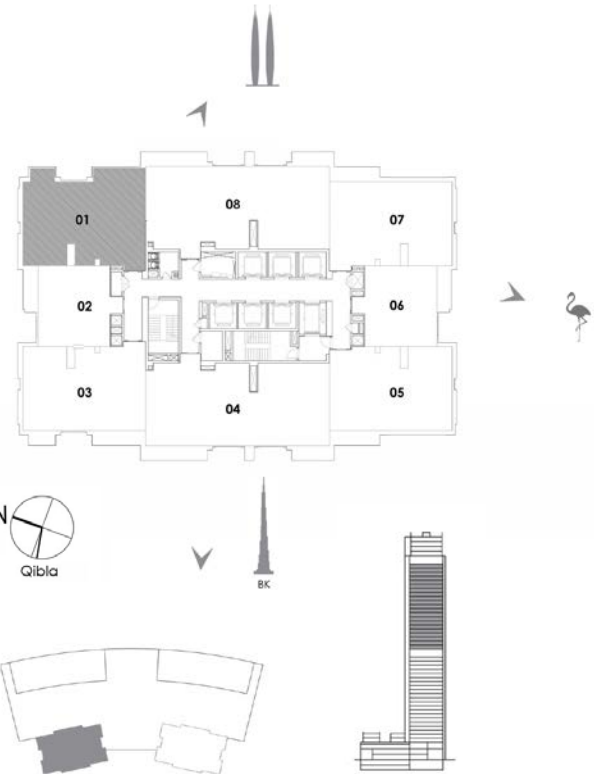
HARBOUR VIEWS

2 BEDROOM TOWER 2



UNIT 01 / LEVEL 25-45

Suite Area	101.31 Sq.m. / 1090 Sq.ft.
Balcony Area	10.20 Sq.m. / 110 Sq.ft.
Total Area	111.51 Sq.m. / 1200 Sq.ft.

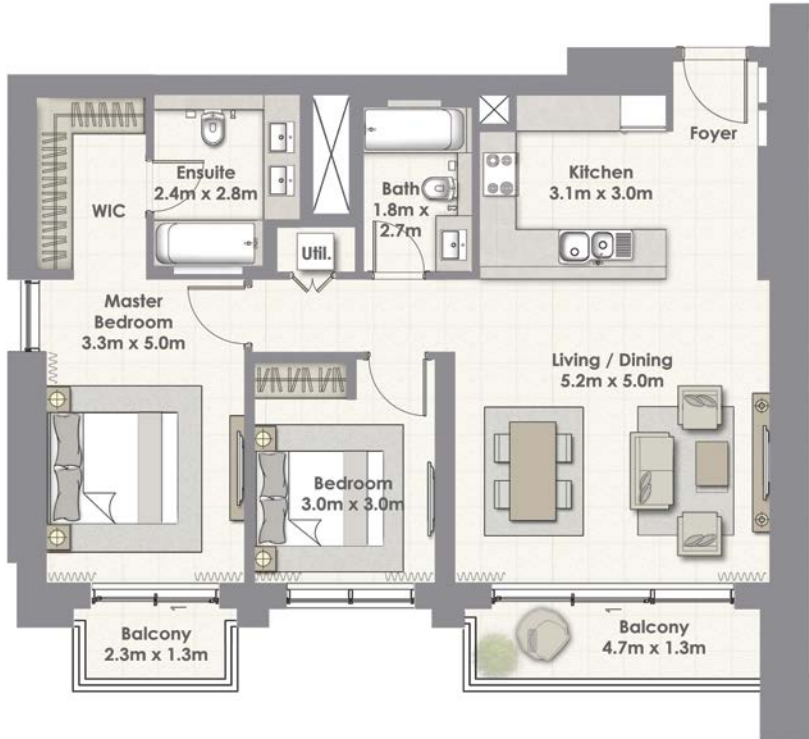


1. All materials, dimensions & drawings are approximate. 2. Information is subject to change without notice. 3. Actual suite area may vary from the stated area. 4. Drawings not to scale. 5. The developer reserves the right to make revisions/alterations without any liability whatsoever.



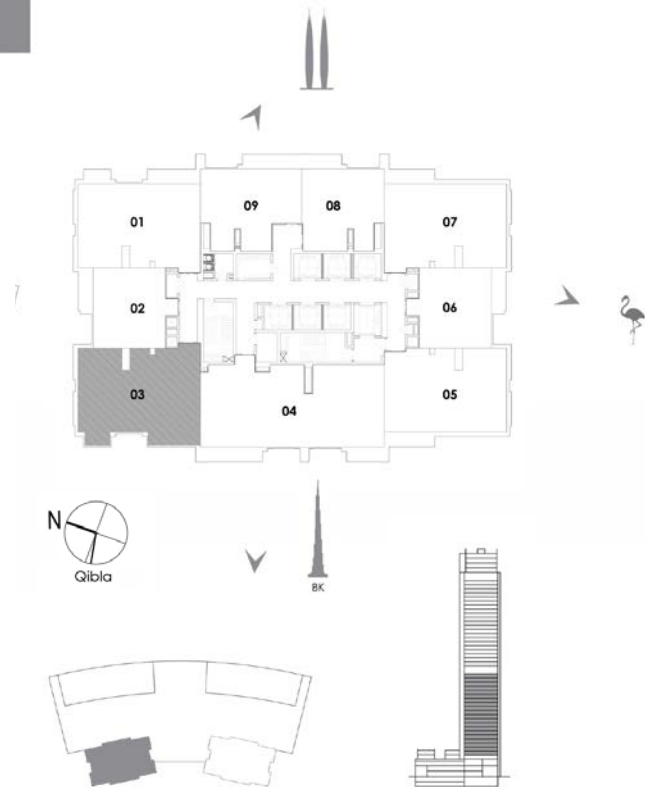
HARBOUR VIEWS

2 BEDROOM TOWER 2



UNIT 03 / LEVEL 4-23

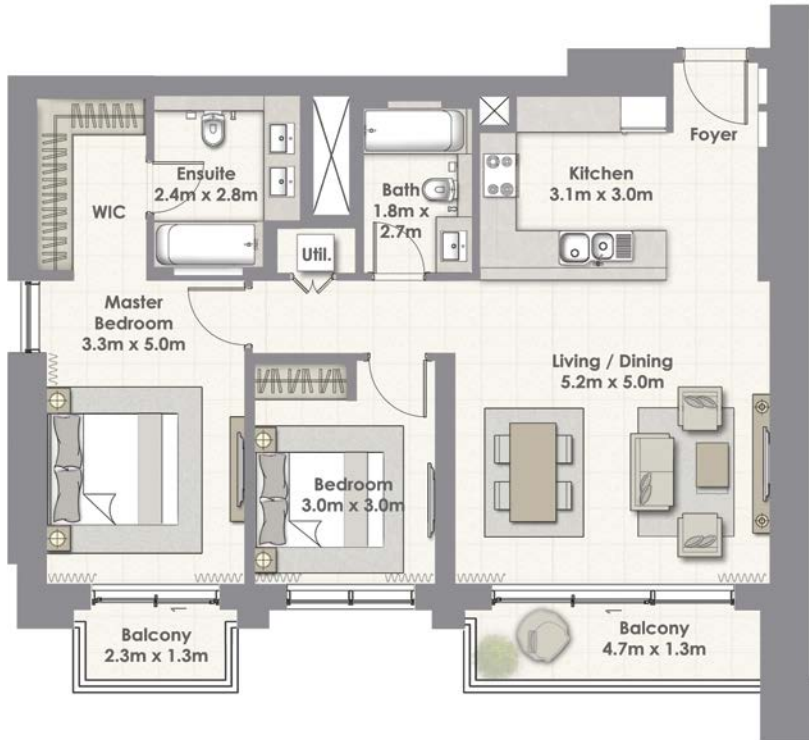
Suite Area	101.31 Sq.m. / 1090 Sq.ft.
Balcony Area	10.20 Sq.m. / 110 Sq.ft.
Total Area	111.51 Sq.m. / 1200 Sq.ft.



1. All materials, dimensions & drawings are approximate. 2. Information is subject to change without notice. 3. Actual suite area may vary from the stated area. 4. Drawings not to scale. 5. The developer reserves the right to make revisions/alterations without any liability whatsoever.

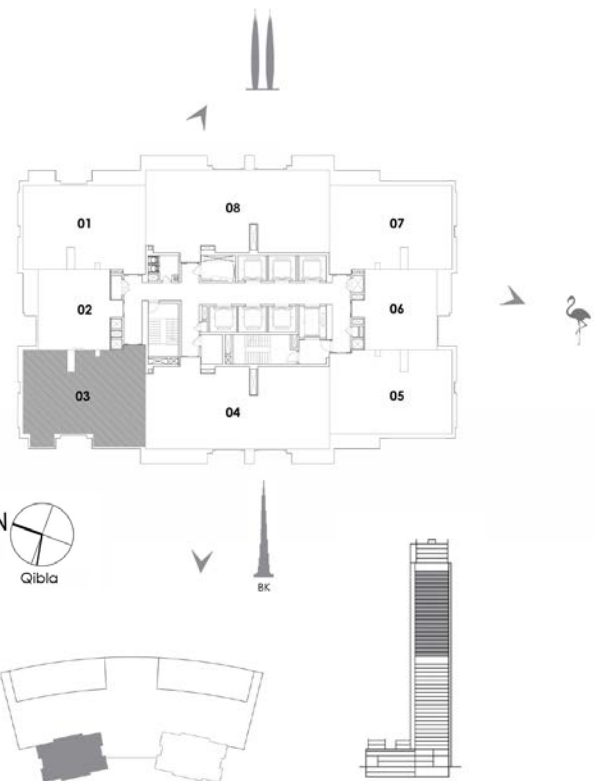
HARBOUR VIEWS

2 BEDROOM TOWER 2



UNIT 03 / LEVEL 25-45

Suite Area	101.31 Sq.m. / 1090 Sq.ft.
Balcony Area	10.20 Sq.m. / 110 Sq.ft.
Total Area	111.51 Sq.m. / 1200 Sq.ft.

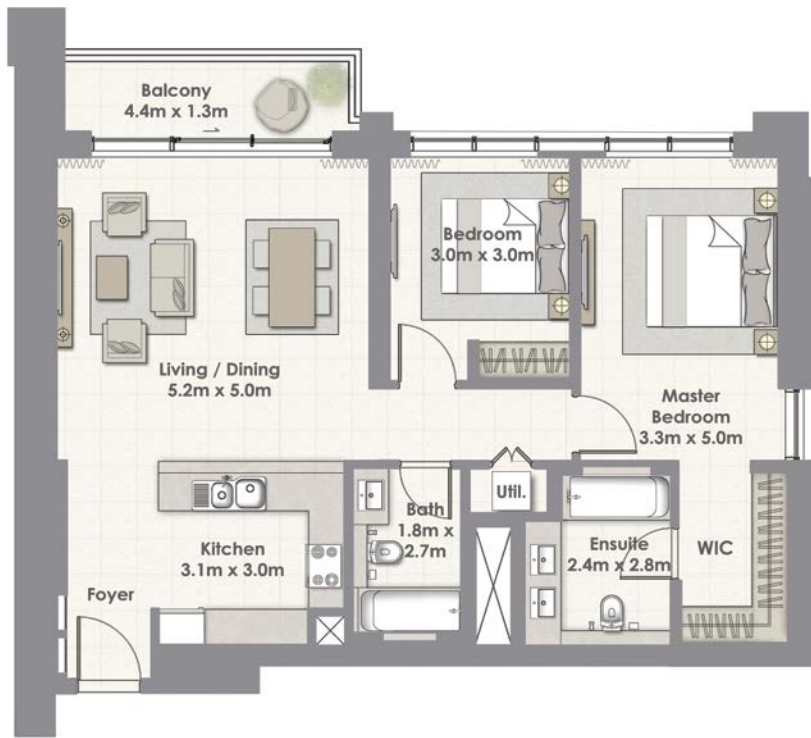


1. All materials, dimensions & drawings are approximate. 2. Information is subject to change without notice. 3. Actual suite area may vary from the stated area. 4. Drawings not to scale. 5. The developer reserves the right to make revisions/alterations without any liability whatsoever.



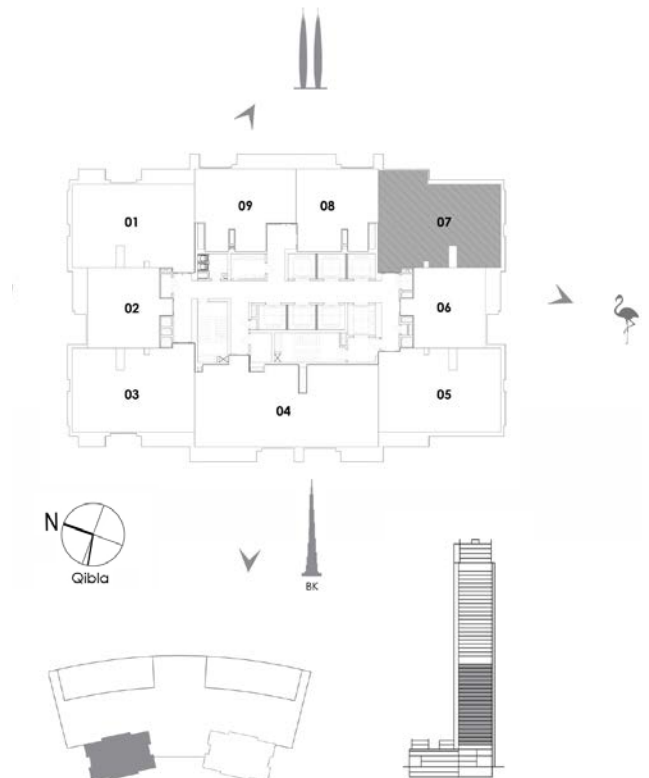
HARBOUR VIEWS

2 BEDROOM TOWER 2



UNIT 07 / LEVEL 4-23

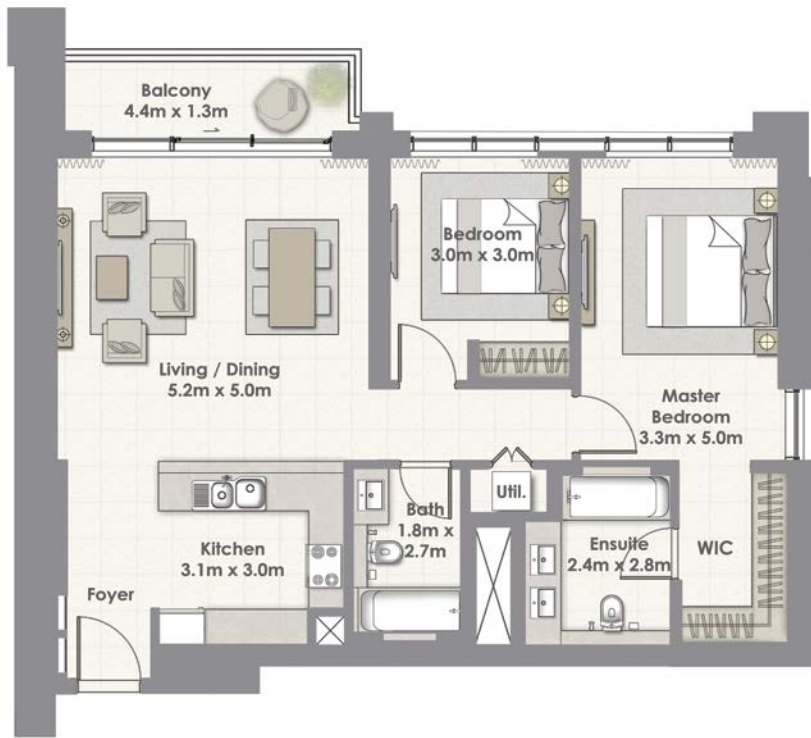
Suite Area	101.55 Sq.m. / 1093 Sq.ft.
Balcony Area	6.58 Sq.m. / 71 Sq.ft.
Total Area	108.13 Sq.m. / 1164 Sq.ft.



1. All materials, dimensions & drawings are approximate. 2. Information is subject to change without notice. 3. Actual suite area may vary from the stated area. 4. Drawings not to scale. 5. The developer reserves the right to make revisions/alterations without any liability whatsoever.

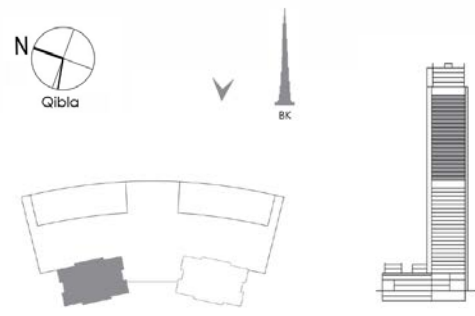
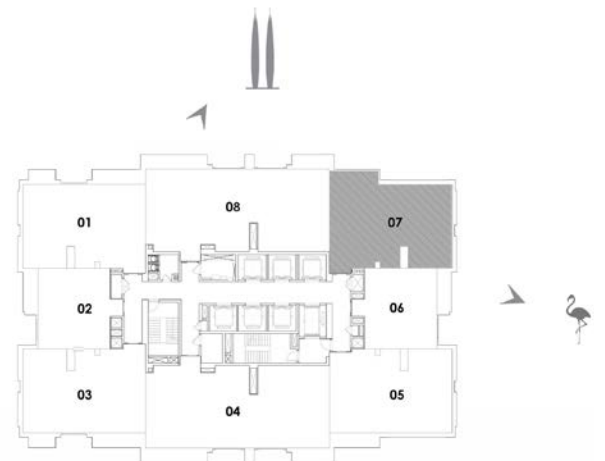
HARBOUR VIEWS

2 BEDROOM TOWER 2



UNIT 07 / LEVEL 25-45

Suite Area	101.55 Sq.m. / 1093 Sq.ft.
Balcony Area	6.58 Sq.m. / 71 Sq.ft.
Total Area	108.13 Sq.m. / 1164 Sq.ft.

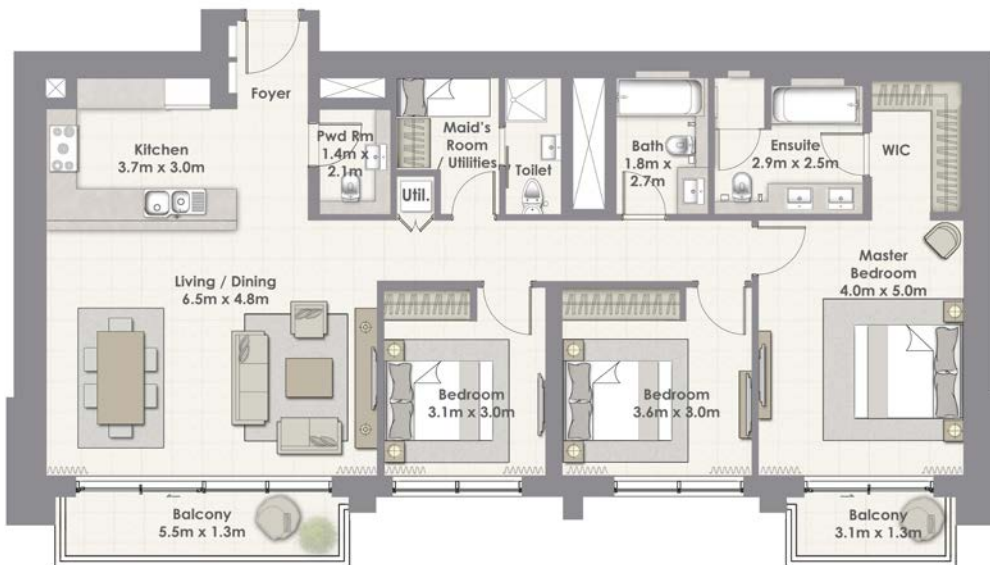


1. All materials, dimensions & drawings are approximate. 2. Information is subject to change without notice. 3. Actual suite area may vary from the stated area. 4. Drawings not to scale. 5. The developer reserves the right to make revisions/alterations without any liability whatsoever.



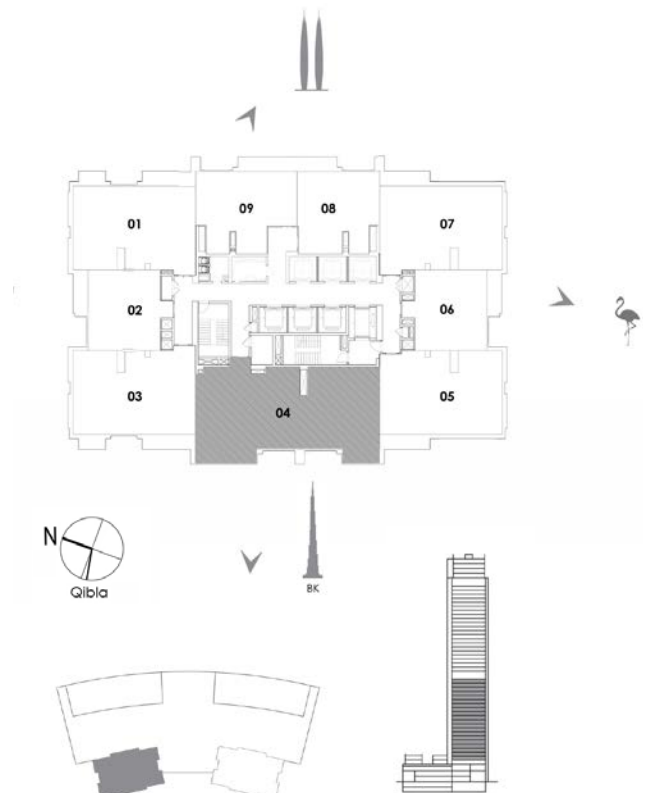
HARBOUR VIEWS

3 BEDROOM TOWER 2



UNIT 04 / LEVEL 4-23

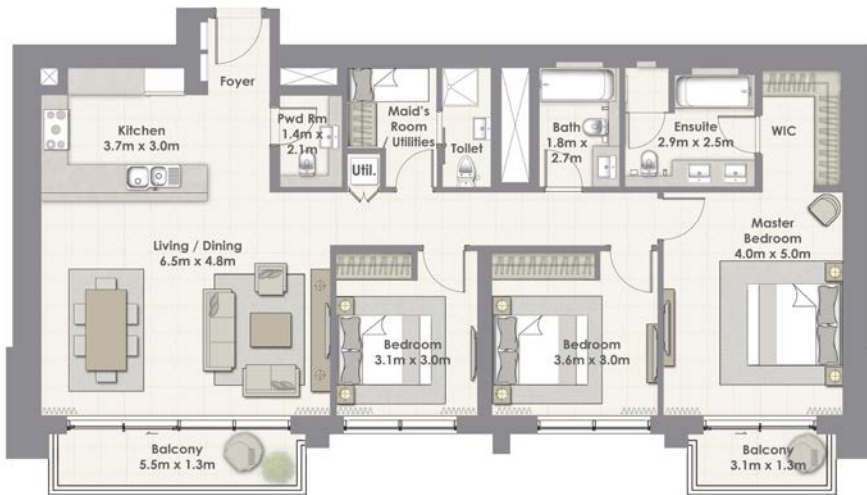
Suite Area	147.98 Sq.m. / 1593 Sq.ft.
Balcony Area	11.58 Sq.m. / 125 Sq.ft.
Total Area	159.56 Sq.m. / 1718 Sq.ft.



1. All materials, dimensions & drawings are approximate. 2. Information is subject to change without notice. 3. Actual suite area may vary from the stated area. 4. Drawings not to scale. 5. The developer reserves the right to make revisions/alterations without any liability whatsoever.

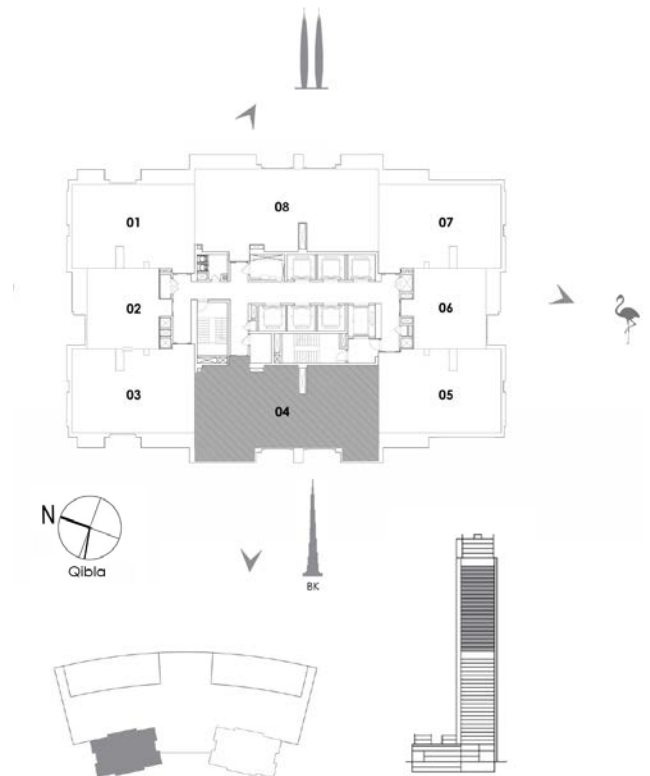
HARBOUR VIEWS

3 BEDROOM TOWER 2



UNIT 04 / LEVEL 25-45

Suite Area	147.96 Sq.m. / 1593 Sq.ft.
Balcony Area	11.58 Sq.m. / 125 Sq.ft.
Total Area	159.54 Sq.m. / 1718 Sq.ft.

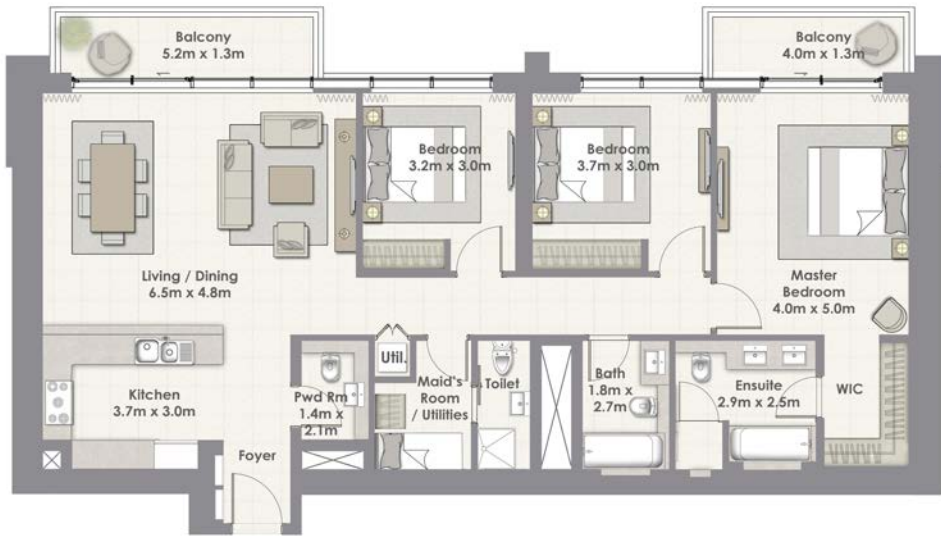


1. All materials, dimensions & drawings are approximate. 2. Information is subject to change without notice. 3. Actual suite area may vary from the stated area. 4. Drawings not to scale. 5. The developer reserves the right to make revisions/alterations without any liability whatsoever.



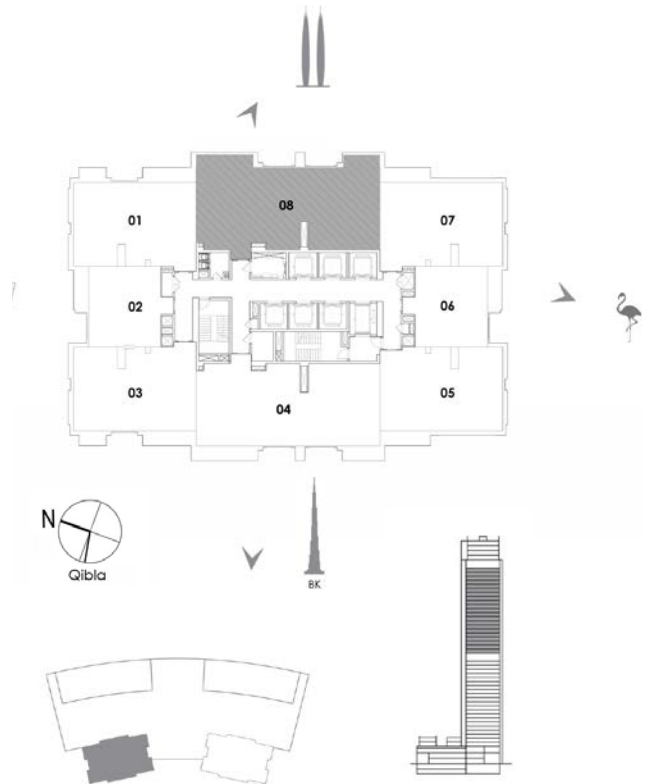
HARBOUR VIEWS

3 BEDROOM TOWER 2



UNIT 08 / LEVEL 25-45

Suite Area	147.96 Sq.m. / 1593 Sq.ft.
Balcony Area	12.40 Sq.m. / 133 Sq.ft.
Total Area	160.36 Sq.m. / 1726 Sq.ft.



1. All materials, dimensions & drawings are approximate. 2. Information is subject to change without notice. 3. Actual suite area may vary from the stated area. 4. Drawings not to scale. 5. The developer reserves the right to make revisions/alterations without any liability whatsoever.

