

أريم
ARIM

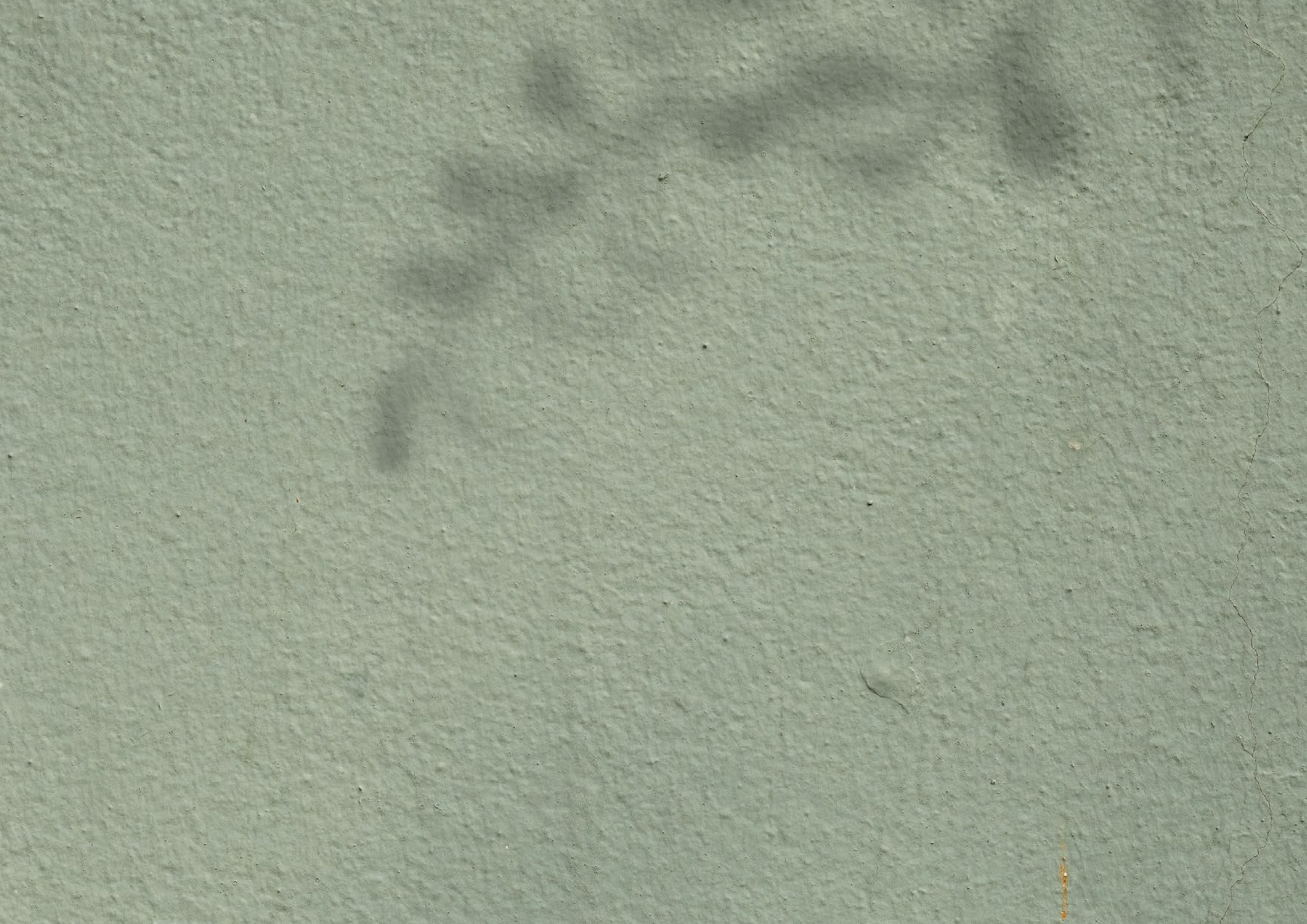
ألف
Alef

Note

1. All images used are for illustration purposes only
2. Unless stated otherwise, all fitting and interior decorative items shown are for illustrative purposes only
3. The developer reserves the right to make alterations, at its absolute discretion, without any liability whatsoever up to the final 'as built' status

ملاحظة

1. جميع الصور المستخدمة هي لأغراض العرض والتوضيح فقط
2. جميع التصميمات والأدوات الخرفيه المعروضة هي لأغراض توضيحية فقط ، ما لم يذكر خلاف ذلك
3. يحتفظ المطور بالحق في إجراء التعديلات، وفقاً لما يراه مناسباً، دون تحفل أي مسؤولية



حَيَات

Hayyan

MAKING HOMES HUMAN



أريم
ARIM

An aerial photograph of a vast, winding lagoon. The water is a mix of deep blues, teal, and light greens, indicating different depths and possibly submerged vegetation or sandbars. The lagoon's path is irregular and meanders across the landscape. The overall scene is serene and expansive.

**Discover new shades of blue
in Sharjah's largest lagoon.**

More than 55,000 sq. ft. of swimming to the horizon

اكتشف تدرجات جديدة زرقاء في أكبر بحيرة في الشارقة
أكثر من 55,000 قدم مربع من السباحة نحو الأفق



حَيَّان
Hayyan

MAKING HOMES HUMAN


Let's get lost in Sharjah's
largest community park.



تجول ودع نفسك تتوه في روعة المساحات
الخضراء في أكبر حديقة مجتمعية في الشارقة

حَيَّان
Hayyan

MAKING HOMES HUMAN



بعض الأماكن تنمو داخلنا
بعض الأماكن تتنامى من أجلنا
أراضي مخصصة للمزروعات العضوية المأكولة

Some spaces grow inside us.
Some grow for us.

Allotments for organic edible gardens

هناك أماكن تثير حماسك. هناك أماكن تنعش سرورك.
ملاعب شاسعة لكرة القدم والتنس وكرة السلة وكرة الطائرة وكرة
المضرب وللتدرّب على الكريكت.



Some spaces spur excitement.
Some fill us with extreme pleasure.

Massive play Fields including a Football Court, a
Tennis Court, a Basketball Court, a Volleyball Court,
a Paddle Tennis Court, and a Cricket practice Net.

حَيَّان
Hayyan

MAKING HOMES HUMAN



حَيَّان

Hayyan

Sharjah Mosque	05 min	دقائق 05	مسجد الشارقة
Dubai International Airport	15 min	دقائق 15	مطار دبي الدولي
Sharjah National Park	08 min	دقائق 08	حديقة الشارقة الوطنية
University City of Sharjah	15 min	دقائق 15	المدينة الجامعية بالشارقة
Sharjah International Airport	10 min	دقائق 10	مطار الشارقة الدولي
Sharjah Museum of Islamic Civilization	20 min	دقائق 20	متحف الشارقة للحضارة الإسلامية
Al Majaz	20 min	دقائق 20	المجاز
Sharjah Industrial Area	15 min	دقائق 15	المنطقة الصناعية بالشارقة
06 Mall	10 min	دقائق 10	مول 06

المخطط الرئيسي
MASTER PLAN

حَيَّان
Hayyan
MAKING HOMES HUMAN



Alef





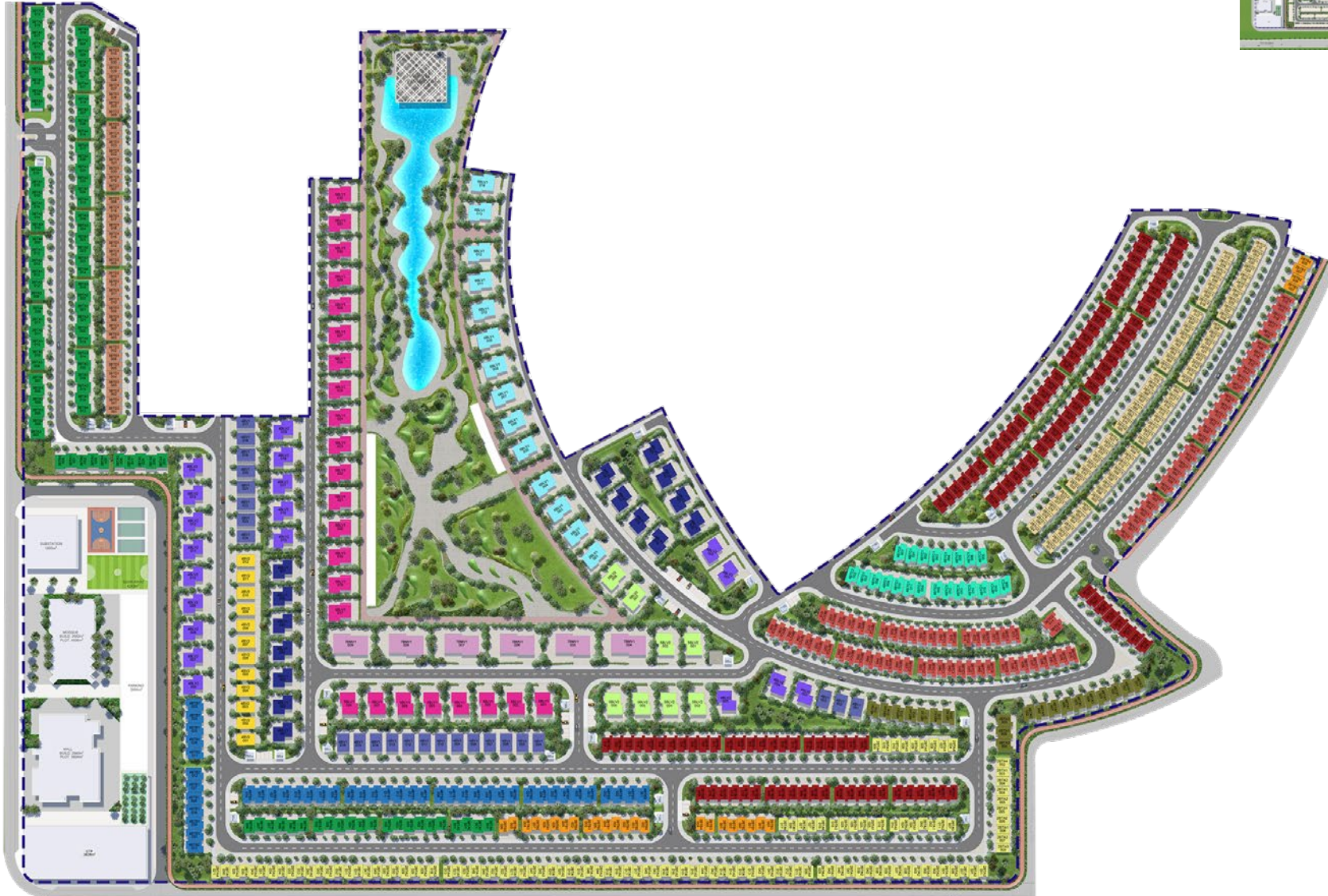




المخطط الرئيسي لأريم
ARIM MASTER PLAN

أريم

ARIM



LEGEND

- | | |
|--|--|
|  2BTA 1/2 |  2BTB 1/2 |
|  2BTC 1/2 |  3BTA 1/2 |
|  3BTB 1/2 |  3BTC |
|  4BTA 1/2 |  4BTB 1/2 |
|  4BTC 1/2 |  4BV 1 |
|  4BV 2 |  4BLV 1 |
|  4BLV 2 |  5BLV 1 |
|  5BLV 2 |  6BLV 1 |
|  7BMV 1 | |

INTERIORS

التصاميم الداخلية

غرفة المعيشة LIVING ROOM

تتميز غرفة المعيشة في تصميمها بالإضاءة الطبيعية، كما يعزز السقف العالي إحساسك بالراحة، ويفيض المكان بالحيوية. وتتميز غرفة المعيشة بلمسات جمالية أنيقة، وتصاميم ملهمة ومساحات واسعة ومتنوعة.

The living room is crafted by natural light, the promised grandeur is higher than the high-ceiling, the space is alive from the floor to windows, to the ever-dancing dunes. The living room features elegant aesthetics, inspiring lived-in design, and generosity of space in precise dimensions.



غرفة المعيشة
LIVING ROOM



غرفة المعيشة
LIVING ROOM





الحمام BATHROOM

أخذنا بعين الإعتبار عند تصميم هذا المكان، أن نتخطى المفهوم التقليدي للحمام. بدءاً من الأجواء، مروراً بالذوق الرفيع والتكنولوجيا، وصولاً إلى كل تفاصيل الإنبارة التي تم وضعها بطرق مدروسة لتمتّع عينيك.

We have created a space that goes beyond the concept of a bathroom. A space designed to be your most intimate, your most personal. From the ambiance to its finesse, the technology, and every unit of light passing through, are carefully placed and curated. For your eyes only.



الحمام
BATHROOM



المطبخ
KITCHEN

المطبخ KITCHEN

تتميز المطابخ بخزائن ذات جودة عالية وتصاميم متصلة لتعطي إتساعاً للمطبخ. كما تضم المطابخ أجهزة متكاملة، وحوض مطبخ معلق، وصنابير وإكسسوارات من علامة تجارية عالمية عالية الجودة.

The kitchens have premier custom design cabinetry and are interconnected to extend a more spacious feel. The kitchens also feature integrated appliances, an under-mount kitchen sink, designer line faucets, and accessories from a quality international brand.



غرفة النوم BEDROOM

توفر غرف النوم الراحة التي يمكنك الإلتزام بها بالمنزل مع خزائن حديثة ومجهزة بدقة. حيث تم تصميم غرفة النوم لتمنحك شعوراً مليئاً بالطمأنينة تتأقلم مع خيارات نمط حياتك.

The bedroom experience design is as real to the mind, as it feels surreal to the eye. It's like coziness acquired fine taste and they both manifested themselves in visual design. The space is crafted with no expense spared, and the beauty puts up with all your lifestyle choices.



غرفة النوم
BEDROOM



تاون هاوس

2 غرف نوم تاون هاوس الواجهة الأمامية
2 BEDROOMS TOWNHOUSE FRONT VIEW



2 غرف نوم تاون هاوس الواجهة الخلفية
2 BEDROOMS TOWNHOUSE REAR VIEW



3 غرف نوم تاون هاوس الواجهة الأمامية
3 BEDROOMS TOWNHOUSE FRONT VIEW



3 غرف نوم تاون هاوس الواجهة الخلفية
3 BEDROOMS TOWNHOUSE REAR VIEW



تاون هاوس استثنائي

2 غرف نوم تاون هاوس الواجهة الأمامية
2 BEDROOMS TOWNHOUSE FRONT VIEW



2 غرف نوم تاون هاوس الواجهة الخلفية
2 BEDROOMS TOWNHOUSE REAR VIEW



2 غرف نوم تاون هاوس الواجهة الأمامية
3 BEDROOMS TOWNHOUSE FRONT VIEW



3 غرف نوم تاون هاوس الواجهة الخلفية
3 BEDROOMS TOWNHOUSE REAR VIEW



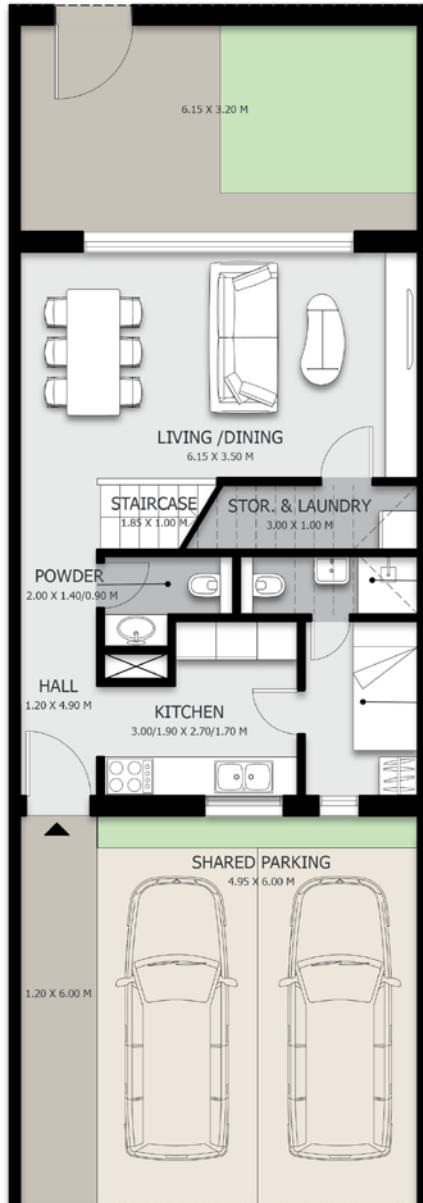
4 غرف نوم تاون هاوس الواجهة الأمامية
4 BEDROOMS TOWNHOUSE FRONT VIEW



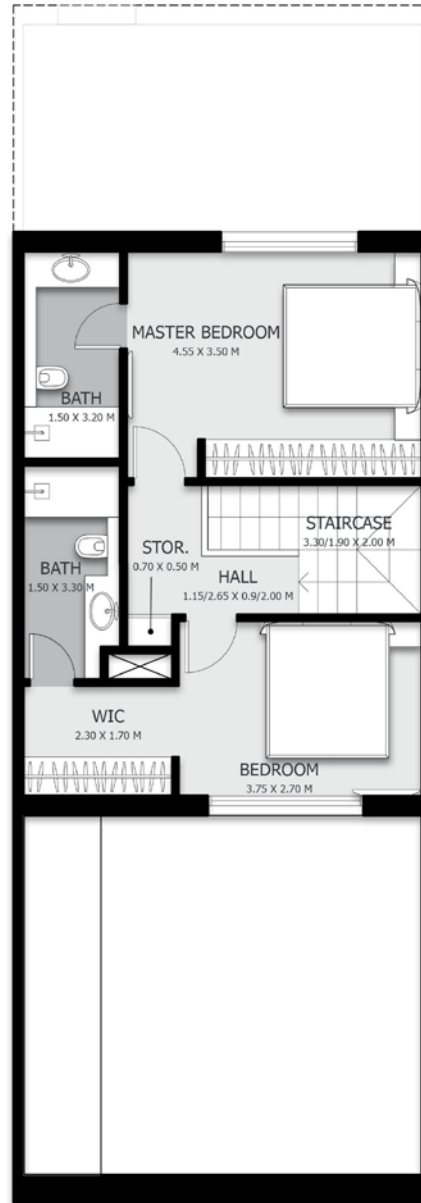
4 غرف نوم تاون هاوس الواجهة الخلفية
4 BEDROOMS TOWNHOUSE REAR VIEW



مخطط وحدات التاون هاوس



GROUND FLOOR PLAN



FIRST FLOOR PLAN

حَيَّان

Hayyan



HAYYAN | ARIM 2 | TOWNHOUSE

2BTC1 - 001

GROUND FLOOR: 96.36 sq. m. | 1037.21 sq. ft.

FIRST FLOOR: 58.55 sq. m. | 630.23 sq. ft.

TOTAL AREA : 154.91 sq. m. | 1667.44 sq. ft.

PLOT AREA : 120.75 sq. m. | 1299.74 sq. ft.

NOTES:

1. Measurements are indicative in metric and imperial excluding construction tolerance.
2. Plots / unit dimensions may vary from brochure.
3. All images used are for illustrative purposes only.
4. Unless stated otherwise, all fittings and interior decorative items shown are for illustrative purposes only and should not be a part of the handing over items.
5. The developer reserves the right to make alterations, at its absolute discretion, without any liability whatsoever up to the final 'as built' status.

An Experience by





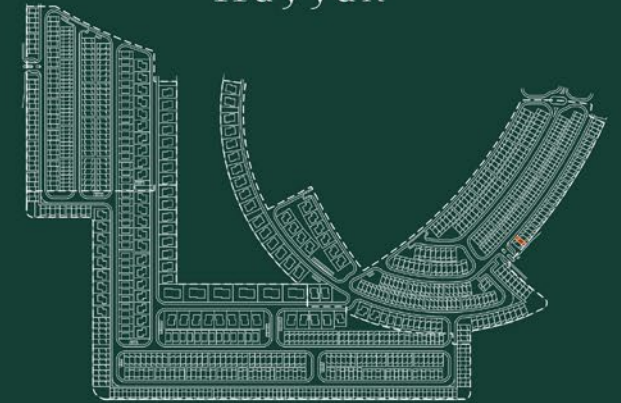
GROUND FLOOR PLAN



FIRST FLOOR PLAN

حَيَّان

Hayyan



HAYYAN | ARIM 2 | TOWNHOUSE

3BTC1 - 001

GROUND FLOOR: 112.45 sq. m. | 1210.40 sq. ft.

FIRST FLOOR: 78.57 sq. m. | 845.72 sq. ft.

TOTAL AREA : 191.02 sq. m. | 2056.12 sq. ft.

PLOT AREA : 145.00 sq. m. | 1560.77 sq. ft.

NOTES:

1. Measurements are indicative in metric and imperial excluding construction tolerance.
2. Plots / unit dimensions may vary from brochure.
3. All images used are for illustrative purposes only.
4. Unless stated otherwise, all fittings and interior decorative items shown are for illustrative purposes only and should not be a part of the handing over items.
5. The developer reserves the right to make alterations, at its absolute discretion, without any liability whatsoever up to the final 'as built' status.

An Experience by



Alef



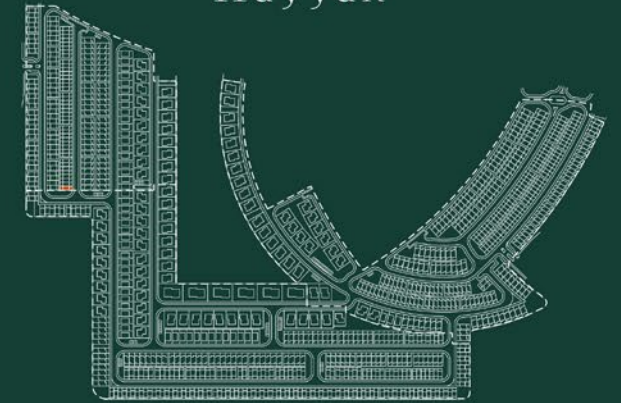
GROUND FLOOR PLAN



FIRST FLOOR PLAN

حَيَّان

Hayyan



HAYYAN | ARIM 3 | TOWNHOUSE

3BTD2 - 001

GROUND FLOOR: 104.44 sq. m. | 1124.18 sq. ft.
 FIRST FLOOR: 64.56 sq. m. | 694.92 sq. ft.

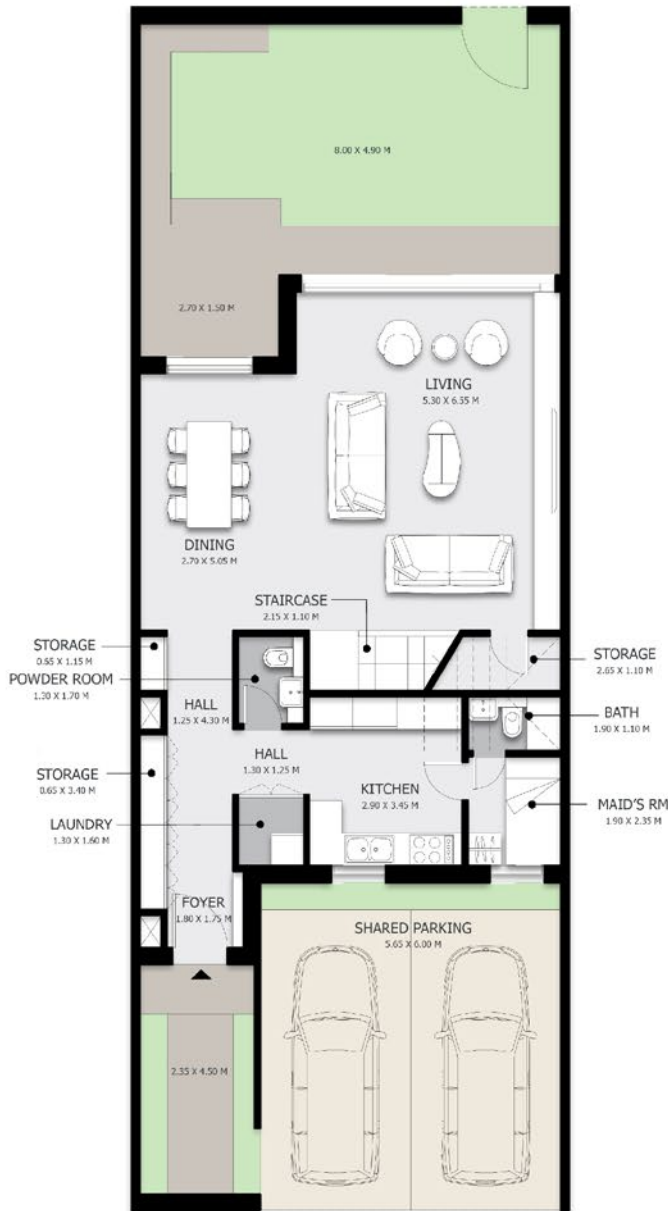
TOTAL AREA : 169.00 sq. m. | 1819.10 sq. ft.
PLOT AREA : 135.30 sq. m. | 1456.36 sq. ft.

NOTES:

1. Measurements are indicative in metric and imperial excluding construction tolerance.
2. Plots / unit dimensions may vary from brochure.
3. All images used are for illustrative purposes only.
4. Unless stated otherwise, all fittings and interior decorative items shown are for illustrative purposes only and should not be a part of the handing over items.
5. The developer reserves the right to make alterations, at its absolute discretion, without any liability whatsoever up to the final 'as built' status.

An Experience by





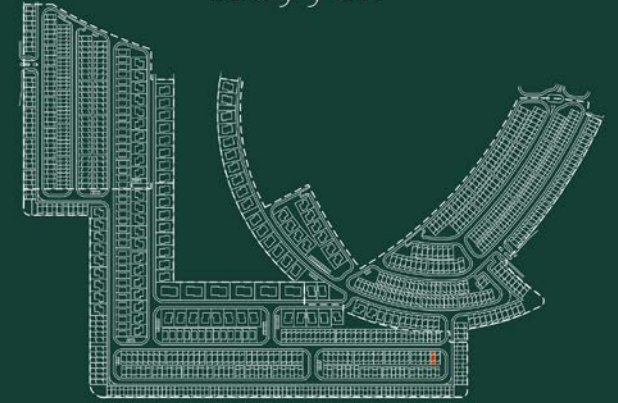
GROUND FLOOR PLAN



FIRST FLOOR PLAN

حَيَّان

Hayyan



HAYYAN | ARIM 1 | TOWNHOUSE

3BTB1 - 001

GROUND FLOOR: 132.06 sq. m. | 1421.49 sq. ft.

FIRST FLOOR: 87.75 sq. m. | 944.54 sq. ft.

TOTAL AREA : 219.81 sq. m. | 2366.04 sq. ft.

PLOT AREA : 176.00 sq. m. | 1894.46 sq. ft.

NOTES:

1. Measurements are indicative in metric and imperial excluding construction tolerance.
2. Plots / unit dimensions may vary from brochure.
3. All images used are for illustrative purposes only.
4. Unless stated otherwise, all fittings and interior decorative items shown are for illustrative purposes only and should not be a part of the handing over items.
5. The developer reserves the right to make alterations, at its absolute discretion, without any liability whatsoever up to the final 'as built' status.

An Experience by



Alef



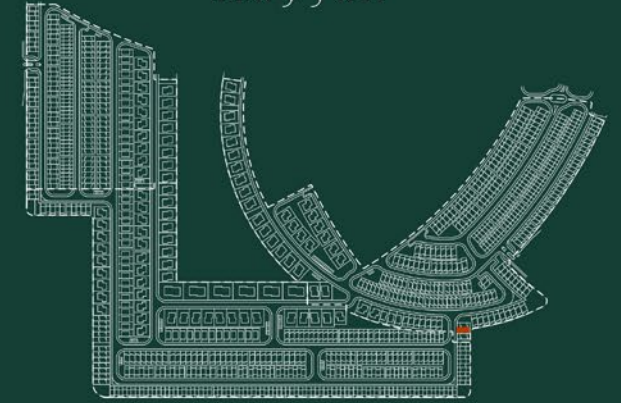
GROUND FLOOR PLAN



FIRST FLOOR PLAN

حَيَّان

Hayyan



HAYYAN | ARIM 2 | TOWNHOUSE

4BTA1 - 009

GROUND FLOOR: 153.16 sq. m. | 1648.61 sq. ft.

FIRST FLOOR: 98.57 sq. m. | 1061.00 sq. ft.

TOTAL AREA : 251.73 sq. m. | 2709.62 sq. ft.

PLOT AREA : 198.00 sq. m. | 2131.25 sq. ft.

NOTES:

1. Measurements are indicative in metric and imperial excluding construction tolerance.
2. Plots / unit dimensions may vary from brochure.
3. All images used are for illustrative purposes only.
4. Unless stated otherwise, all fittings and interior decorative items shown are for illustrative purposes only and should not be a part of the handing over items.
5. The developer reserves the right to make alterations, at its absolute discretion, without any liability whatsoever up to the final 'as built' status.

An Experience by





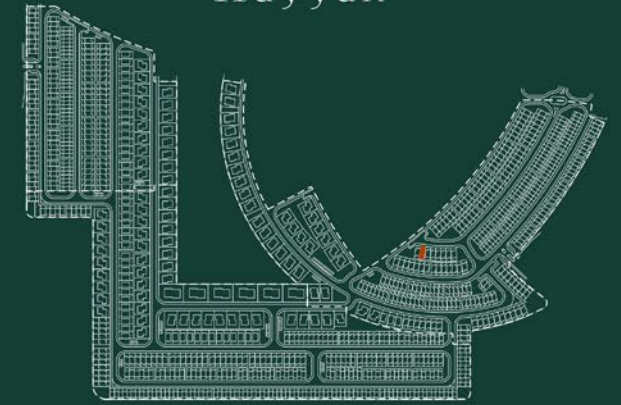
GROUND FLOOR PLAN



FIRST FLOOR PLAN

حَيَّان

Hayyan



HAYYAN | ARIM 2 | TOWNHOUSE

4BTC1 - 001

GROUND FLOOR: 136.45 sq. m. | 1465.73 sq. ft.

FIRST FLOOR: 93.37 sq. m. | 1005.03 sq. ft.

TOTAL AREA : 229.82 sq. m. | 2473.76 sq. ft.

PLOT AREA : 189.00 sq. m. | 2034.38 sq. ft.

NOTES:

1. Measurements are indicative in metric and imperial excluding construction tolerance.
2. Plots / unit dimensions may vary from brochure.
3. All images used are for illustrative purposes only.
4. Unless stated otherwise, all fittings and interior decorative items shown are for illustrative purposes only and should not be a part of the handing over items.
5. The developer reserves the right to make alterations, at its absolute discretion, without any liability whatsoever up to the final 'as built' status.

An Experience by



Alef

فلل

فيلا 4 غرف نوم الواجهة الأمامية
4 BEDROOMS VILLA FRONT VIEW



فيلا 4 غرف نوم الواجهة الخلفية
4 BEDROOMS VILLA REAR VIEW



فلا فآخرة

فيلا فاخرة 4 غرف نوم الواجهة الأمامية
4 BEDROOMS LUXURY VILLA FRONT VIEW



فيلا فاخرة 4 غرف نوم الواجهة الخلفية
4 BEDROOMS LUXURY VILLA REAR VIEW



فيلا فاخرة 5 غرف نوم الواجهة الأمامية
5 BEDROOMS LUXURY VILLA FRONT VIEW



فيلا فاخرة 5 غرف نوم الواجهة الخلفية
5 BEDROOMS LUXURY VILLA REAR VIEW



فيلا فاخرة شاسعة

فيلا فاخرة شاسعة الواجهة الأمامية
MANSION FRONT VIEW



فيلا فاخرة شاسعة الواجهة الخلفية
MANSION REAR VIEW



مخطط وحدات الفلل



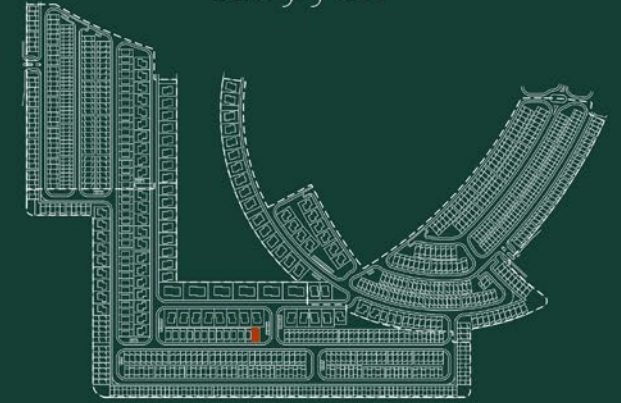
GROUND FLOOR PLAN



FIRST FLOOR PLAN

حَيَّان

Hayyan



HAYYAN | ARIM 1 | VILLA

4BV1 - 004

GROUND FLOOR: 183.53 sq. m. | 1975.52 sq. ft.

FIRST FLOOR: 156.34 sq. m. | 1682.82 sq. ft.

TOTAL AREA : 339.87 sq. m. | 3658.33 sq. ft.

PLOT AREA : 291.60 sq. m. | 3138.75 sq. ft.

NOTES:

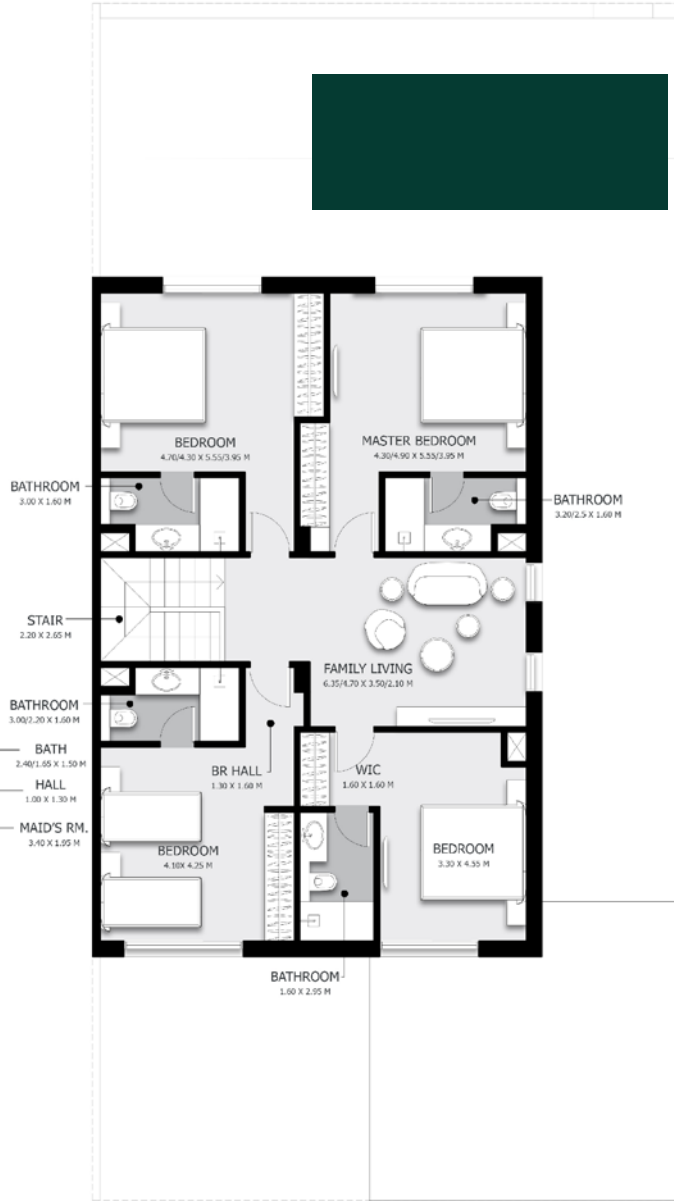
1. Measurements are indicative in metric and imperial excluding construction tolerance.
2. Plots / unit dimensions may vary from brochure.
3. All images used are for illustrative purposes only.
4. Unless stated otherwise, all fittings and interior decorative items shown are for illustrative purposes only and should not be a part of the handing over items.
5. The developer reserves the right to make alterations, at its absolute discretion, without any liability whatsoever up to the final 'as built' status.

An Experience by





GROUND FLOOR PLAN



FIRST FLOOR PLAN

حَيَّان

Hayyan



HAYYAN | ARIM 3 | VILLA

4BV1 - 025

GROUND FLOOR: 183.53 sq. m. | 1975.52 sq. ft.
FIRST FLOOR: 156.34 sq. m. | 1682.83 sq. ft.

TOTAL AREA : 339.87 sq. m. | 3658.33 sq. ft.
PLOT AREA : 288.00 sq. m. | 3100.03 sq. ft.

NOTES:

1. Measurements are indicative in metric and imperial excluding construction tolerance.
2. Plots / unit dimensions may vary from brochure.
3. All images used are for illustrative purposes only.
4. Unless stated otherwise, all fittings and interior decorative items shown are for illustrative purposes only and should not be a part of the handing over items.
5. The developer reserves the right to make alterations, at its absolute discretion, without any liability whatsoever up to the final 'as built' status.

An Experience by



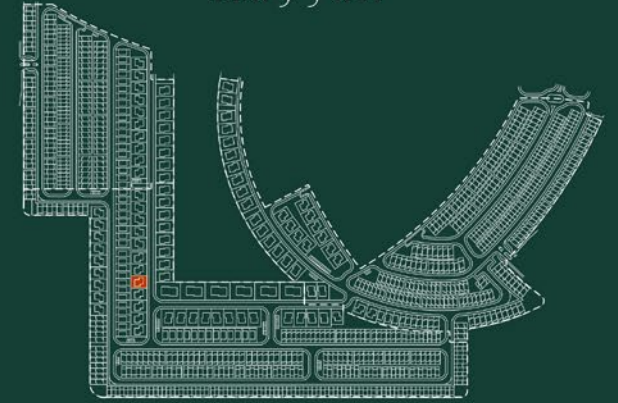


FIRST FLOOR PLAN

800 253323 | hayyan.ae |   hayyanuae

حَيَّان

Hayyan



HAYYAN | ARIM 1 | VILLA

4BLV1 RF - 001

GROUND FLOOR: 209.92 sq. m. | 2259.58 sq. ft.
FIRST FLOOR: 193.34 sq. m. | 2081.11 sq. ft.

TOTAL AREA : 403.26 sq. m. | 4340.69 sq. ft.
PLOT AREA : 520.00 sq. m. | 5597.23 sq. ft.

NOTES:

1. Measurements are indicative in metric and imperial excluding construction tolerance.
2. Plots / unit dimensions may vary from brochure.
3. All images used are for illustrative purposes only.
4. Unless stated otherwise, all fittings and interior decorative items shown are for illustrative purposes only and should not be a part of the handing over items.
5. The developer reserves the right to make alterations, at its absolute discretion, without any liability whatsoever up to the final 'as built' status.

An Experience by

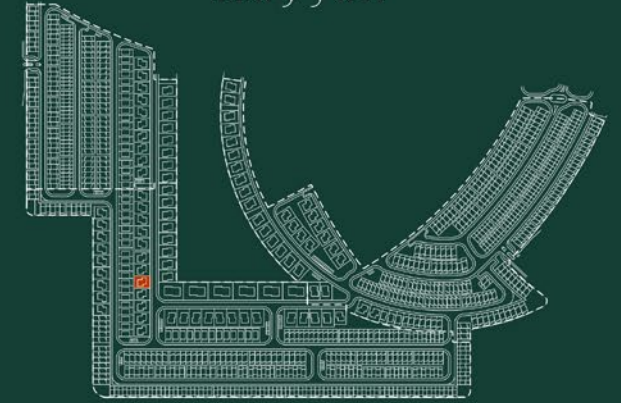




GROUND FLOOR PLAN

حَيَّان

Hayyan



HAYYAN | ARIM 1 | VILLA

4BLV1 GF - 001

GROUND FLOOR: 209.92 sq. m. | 2259.58 sq. ft.

FIRST FLOOR: 193.34 sq. m. | 2081.11 sq. ft.

TOTAL AREA : 403.26 sq. m. | 4340.69 sq. ft.

PLOT AREA : 520.00 sq. m. | 5597.23 sq. ft.

NOTES:

1. Measurements are indicative in metric and imperial excluding construction tolerance.
2. Plots / unit dimensions may vary from brochure.
3. All images used are for illustrative purposes only.
4. Unless stated otherwise, all fittings and interior decorative items shown are for illustrative purposes only and should not be a part of the handing over items.
5. The developer reserves the right to make alterations, at its absolute discretion, without any liability whatsoever up to the final 'as built' status.

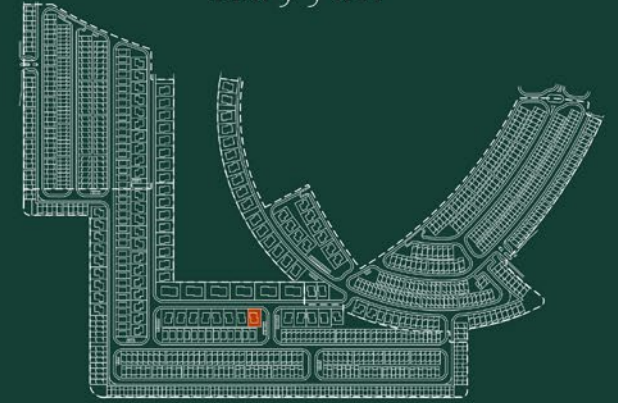
An Experience by





حَيَّان

Hayyan



HAYYAN | ARIM 1 | VILLA

5BLV1 RF - 001

GROUND FLOOR: 283.77 sq. m. | 3054.47 sq. ft.

FIRST FLOOR: 262.95 sq. m. | 2830.37 sq. ft.

TOTAL AREA : 546.72 sq. m. | 5884.84 sq. ft.

PLOT AREA : 618.50 sq. m. | 6657.47 sq. ft.

NOTES:

1. Measurements are indicative in metric and imperial excluding construction tolerance.
2. Plots / unit dimensions may vary from brochure.
3. All images used are for illustrative purposes only.
4. Unless stated otherwise, all fittings and interior decorative items shown are for illustrative purposes only and should not be a part of the handing over items.
5. The developer reserves the right to make alterations, at its absolute discretion, without any liability whatsoever up to the final 'as built' status.

An Experience by



800 253323
hayyan.ae

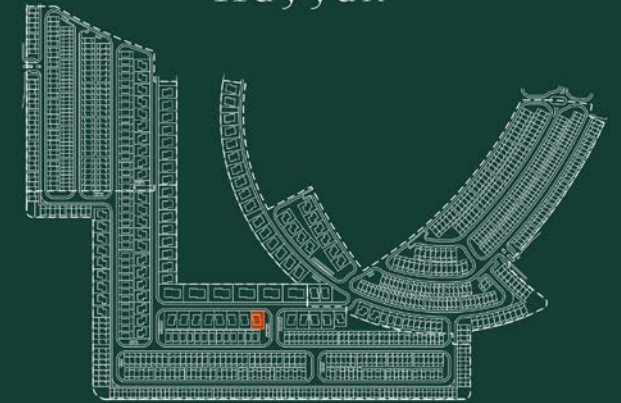
f @ hayyanuae



GROUND FLOOR PLAN

حَيَّان

Hayyan



HAYYAN | ARIM 1 | VILLA

SBLV1 GF - 001

GROUND FLOOR: 283.77 sq. m. | 3054.47 sq. ft.
 FIRST FLOOR: 262.95 sq. m. | 2830.37 sq. ft.

TOTAL AREA : 546.72 sq. m. | 5884.84 sq. ft.
PLOT AREA : 618.50 sq. m. | 6657.47 sq. ft.

NOTES:

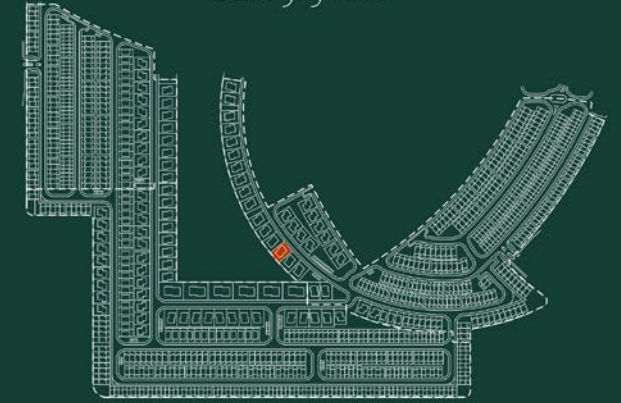
1. Measurements are indicative in metric and imperial excluding construction tolerance.
2. Plots / unit dimensions may vary from brochure.
3. All images used are for illustrative purposes only.
4. Unless stated otherwise, all fittings and interior decorative items shown are for illustrative purposes only and should not be a part of the handing over items.
5. The developer reserves the right to make alterations, at its absolute discretion, without any liability whatsoever up to the final 'as built' status.

An Experience by



حَيَّان

Hayyan



HAYYAN | ARIM 2 | VILLA

6BLV RF - 001

GROUND FLOOR: 283.77 sq. m. | 3054.47 sq. ft.
 FIRST FLOOR: 262.95 sq. m. | 2830.37 sq. ft.
 ROOF TOP : 121.42 sq. m. | 1306.95 sq. ft.

TOTAL AREA : 668.14 sq. m. | 7191.79 sq. ft.
PLOT AREA : 641.00 sq. m. | 6899.66 sq. ft.

NOTES:

1. Measurements are indicative in metric and imperial excluding construction tolerance.
2. Plots / unit dimensions may vary from brochure.
3. All images used are for illustrative purposes only.
4. Unless stated otherwise, all fittings and interior decorative items shown are for illustrative purposes only and should not be a part of the handing over items.
5. The developer reserves the right to make alterations, at its absolute discretion, without any liability whatsoever up to the final 'as built' status.

An Experience by



Alef



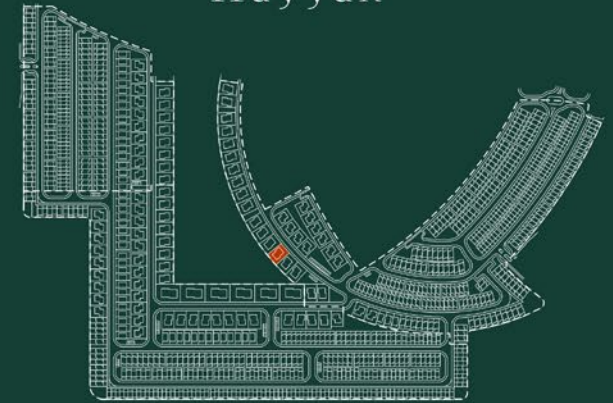
ROOF PLAN



GROUND FLOOR PLAN

حَيَّان

Hayyan



HAYYAN | ARIM 2 | VILLA

6BLV1 GF - 001

GROUND FLOOR: 283.77 sq. m. | 3054.47 sq. ft.
 FIRST FLOOR: 262.95 sq. m. | 2830.37 sq. ft.
 ROOF TOP : 121.42 sq. m. | 1306.95 sq. ft.

TOTAL AREA : 668.14 sq. m. | 7191.79 sq. ft.
PLOT AREA : 641.00 sq. m. | 6899.66 sq. ft.

NOTES:

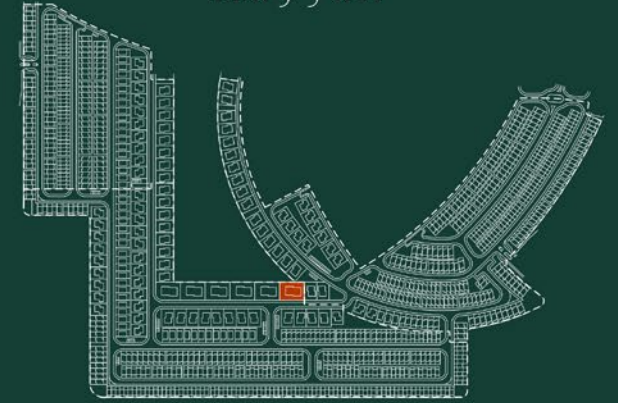
1. Measurements are indicative in metric and imperial excluding construction tolerance.
2. Plots / unit dimensions may vary from brochure.
3. All images used are for illustrative purposes only.
4. Unless stated otherwise, all fittings and interior decorative items shown are for illustrative purposes only and should not be a part of the handing over items.
5. The developer reserves the right to make alterations, at its absolute discretion, without any liability whatsoever up to the final 'as built' status.

An Experience by



حَيَّان

Hayyan



HAYYAN | ARIM 1 | MANSION

7BMV1 RF - 004

GROUND FLOOR: 530.14 sq. m. | 5706.43 sq. ft.

FIRST FLOOR: 419.20 sq. m. | 4512.27 sq. ft.

TOTAL AREA : 949.34 sq. m. | 10218.70 sq. ft.

PLOT AREA : 1221.80 sq. m. | 13151.33 sq. ft.

NOTES:

1. Measurements are indicative in metric and imperial excluding construction tolerance.
2. Plots / unit dimensions may vary from brochure.
3. All images used are for illustrative purposes only.
4. Unless stated otherwise, all fittings and interior decorative items shown are for illustrative purposes only and should not be a part of the handing over items.
5. The developer reserves the right to make alterations, at its absolute discretion, without any liability whatsoever up to the final 'as built' status.

An Experience by



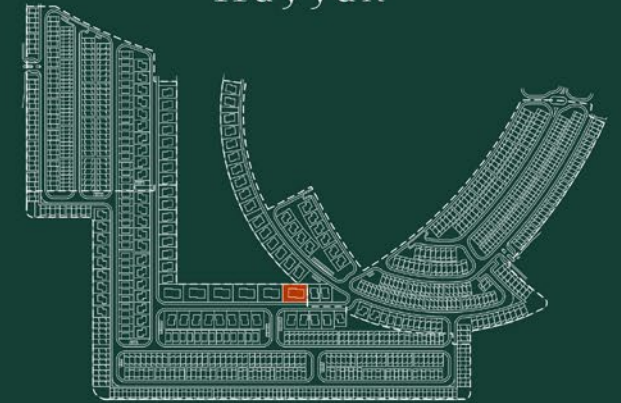
FIRST FLOOR PLAN



GROUND FLOOR PLAN

حَيَّان

Hayyan



HAYYAN | ARIM 1 | MANSION

7BMV1 GF - 004

GROUND FLOOR: 530.14 sq. m. | 5706.43 sq. ft.

FIRST FLOOR: 419.20 sq. m. | 4512.27 sq. ft.

TOTAL AREA : 949.34 sq. m. | 10218.70 sq. ft.

PLOT AREA : 1221.80 sq. m. | 13151.33 sq. ft.

NOTES:

1. Measurements are indicative in metric and imperial excluding construction tolerance.
2. Plots / unit dimensions may vary from brochure.
3. All images used are for illustrative purposes only.
4. Unless stated otherwise, all fittings and interior decorative items shown are for illustrative purposes only and should not be a part of the handing over items.
5. The developer reserves the right to make alterations, at its absolute discretion, without any liability whatsoever up to the final 'as built' status.

An Experience by



Hayyan Highlights

- Largest Community Park
- Largest Lagoon
- Land Allotments
Allotments for organic edible gardens.
- Dense Greenery
- Sports Park
Running track of 6 km | Cycling track of 6 km
- Pocket Parks
- Community Mall
- Community Mosque
- Community Clubhouse
- Play Ground
Football court | Tennis court | Basketball court | Volleyball court
Paddle tennis court | Cricket Net of 100,000 sq. ft.
- Thoughtfully Designed Spaces
- Smart Villas
BBQ Areas | Private Garden | Furnished with kitchen appliances |
Quality Finishes | Swimming Pools | Natural Light |
European Toilets | Maximum Privacy
- Strategic Location

مميزات حيّان

- أكبر حديقة مجتمعية في الشارقة
- أكبر بحيرة في الشارقة
- أراضي زراعية
أراضي مخصصة للمزروعات العضوية
- مساحات خضراء
- حديقة رياضية
مسار للركض بمسافة 6 كم | مسار للدراجات الهوائية بمسافة 6 كم
- حدائق سكنية
- مركز تجاري
- مسجد
- مركز مجتمعي
- ملاعب
ملعب كرة قدم | ملعب تنس | ملعب كرة سلة | ملعب كرة طائرة
ملعب بادل تنس | ملعب كريكت من 100,000 قدم مربع
- مساحات مُصممة بعناية
- فلل ذكية
مناطق خاصة للشواء | حدائق خاصة | فلل مجهزة بأدوات المطبخ |
تنشيطيات عالية الجودة | أحواض سباحة | إنارة طبيعية |
حمامات أوروبية | خصوصية فائقة
- موقع استراتيجي



حَيَّان
Hayyan
MAKING HOMES HUMAN

Hayyan.alefgroup.ae

800 253323

A New Living Experience by

