

DC
VILLAS

JUMEIRAH GOLF ESTATES



DARGLOBAL

FLOOR PLANS

4 BEDROOM

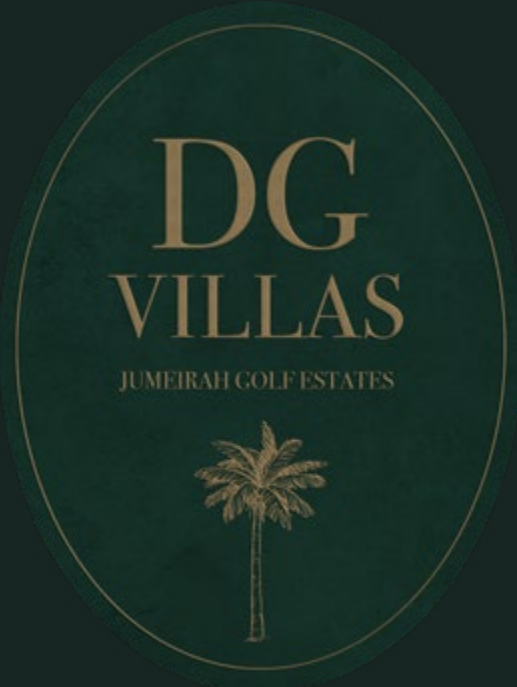
FRONT VIEW



4 BEDROOM

REAR VIEW



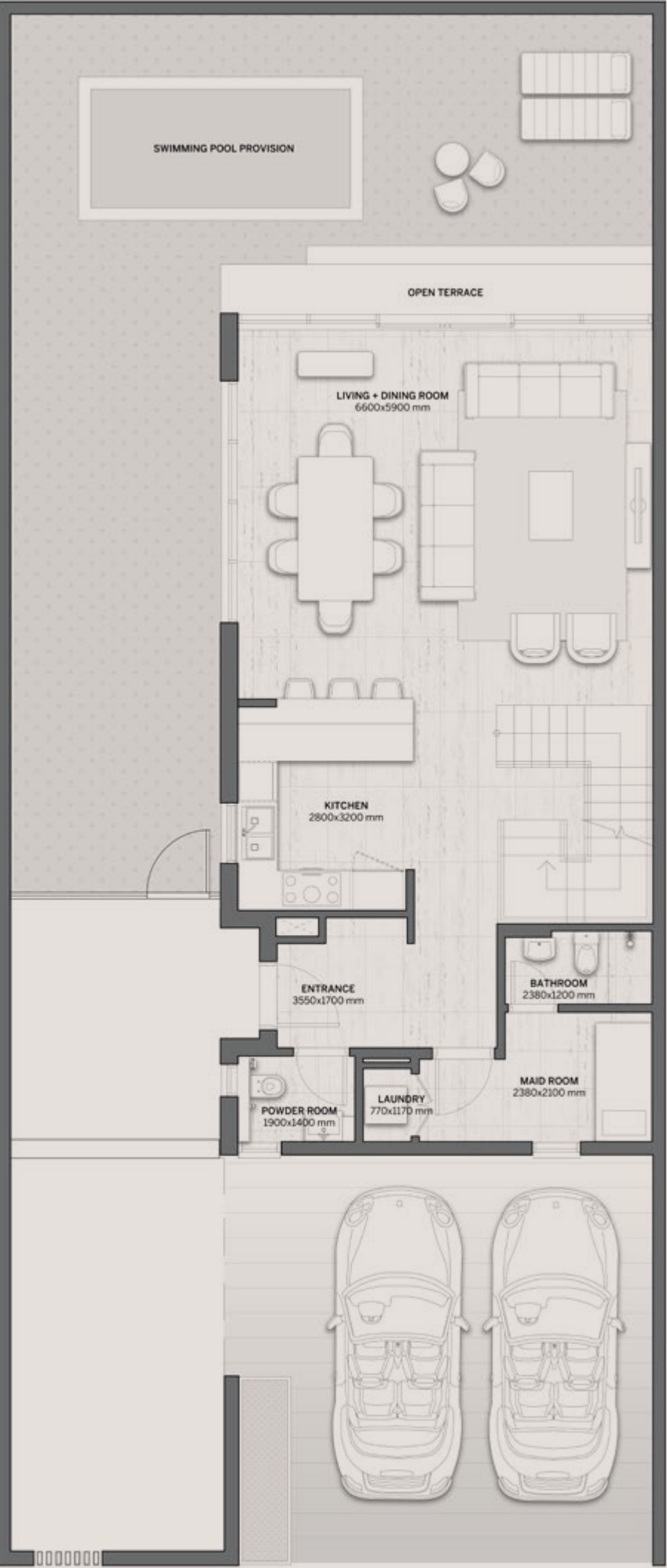


VILLA V24A
4-BEDROOM

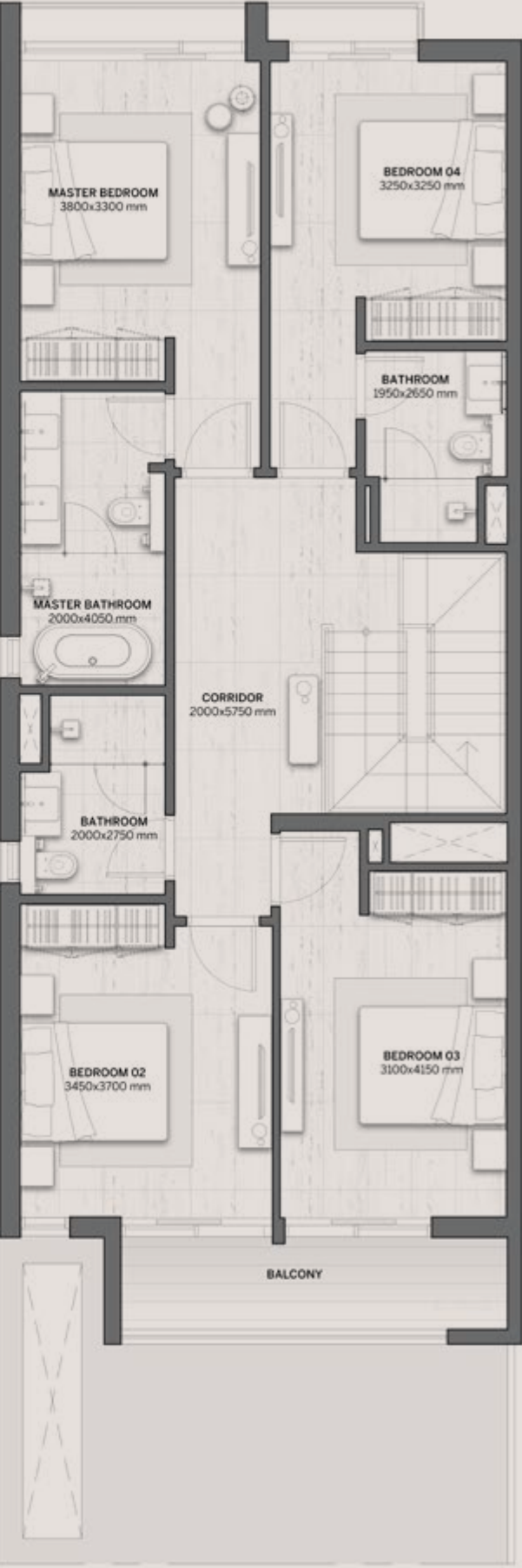
| RESIDENCE | SQM | SQFT |
|---------------|-----------|---------------|
| PLOT AREA | 259 - 336 | 2,785 - 3,620 |
| BUILT UP AREA | 269 | 2,899 |



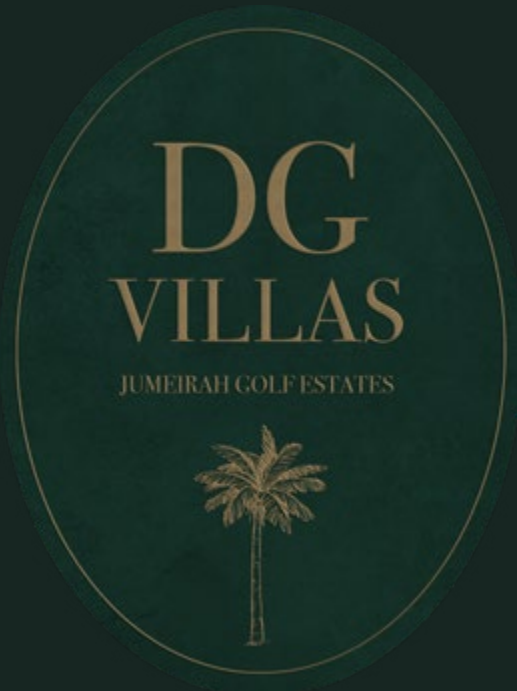
Disclaimer: All pictures, plans, layouts, information, data and details included in this brochure are indicative only and may change at any time up to the final 'as built' status in accordance with final designs of the project, regulatory approvals and planning permissions. All accessories and interior finishes such as wallpaper, chandeliers, furniture, electronics, white goods, curtains, hard and soft landscaping, pavements, features, gym, swimming pool(s) and other elements displayed in the brochure, or within the show apartment or between the plot boundary and the unit, are not part of the unit and are shown for illustrative purposes only.



GROUND FLOOR

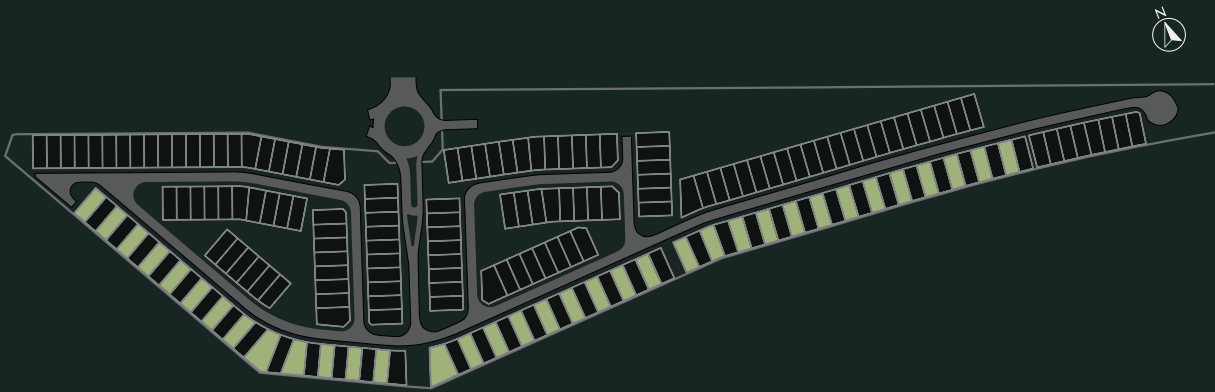


FIRST FLOOR

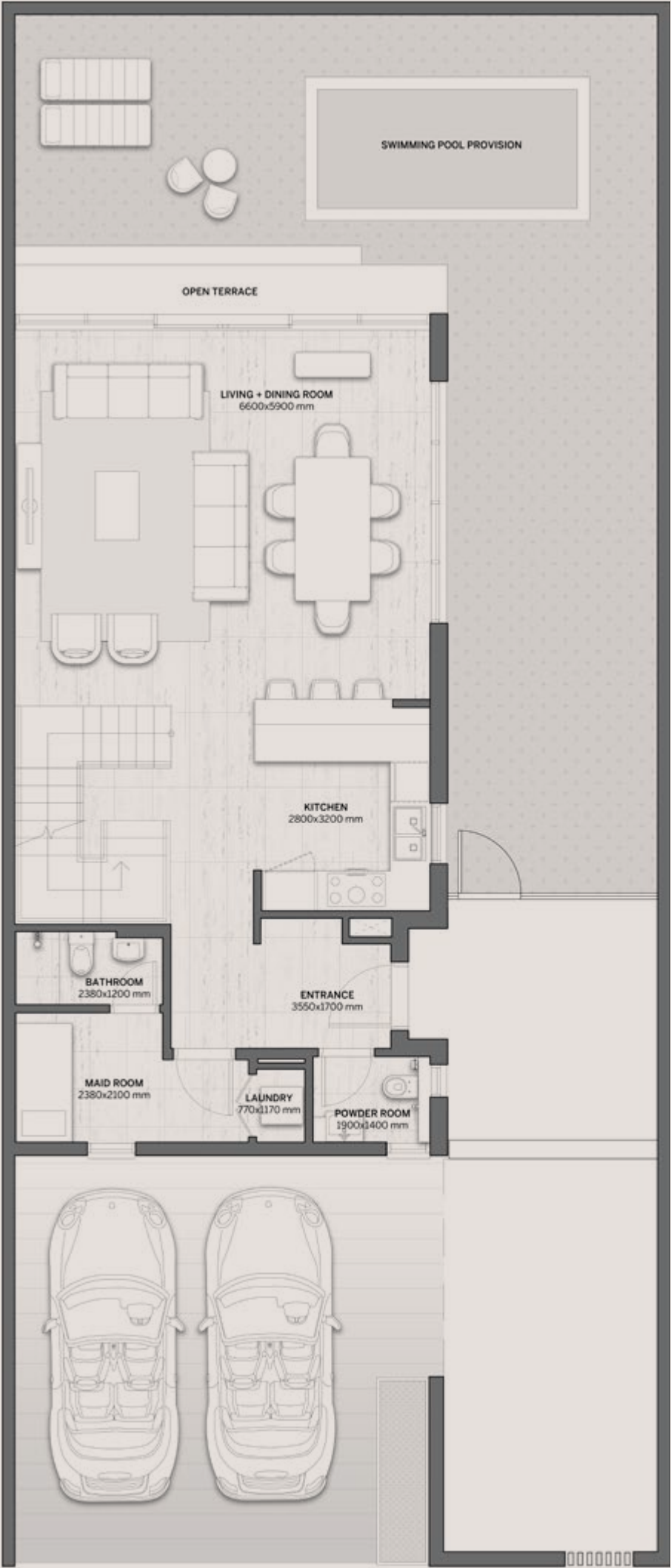


VILLA V24B
4-BEDROOM

| RESIDENCE | SQM | SQFT |
|---------------|-----------|---------------|
| PLOT AREA | 256 - 364 | 2,761 - 3,922 |
| BUILT UP AREA | 271 | 2,914 |



Disclaimer: All pictures, plans, layouts, information, data and details included in this brochure are indicative only and may change at any time up to the final 'as built' status in accordance with final designs of the project, regulatory approvals and planning permissions. All accessories and interior finishes such as wallpaper, chandeliers, furniture, electronics, white goods, curtains, hard and soft landscaping, pavements, features, gym, swimming pool(s) and other elements displayed in the brochure, or within the show apartment or between the plot boundary and the unit, are not part of the unit and are shown for illustrative purposes only.



GROUND FLOOR



FIRST FLOOR

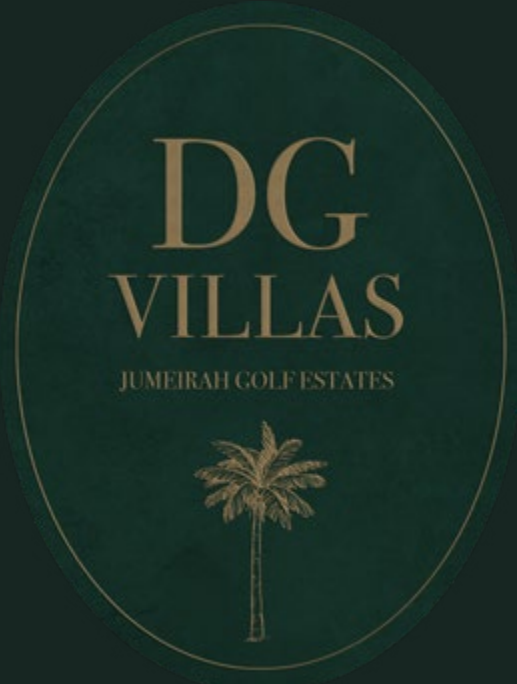
5 BEDROOM

FRONT VIEW



5 BEDROOM
REAR VIEW





VILLA V29A
5-BEDROOM

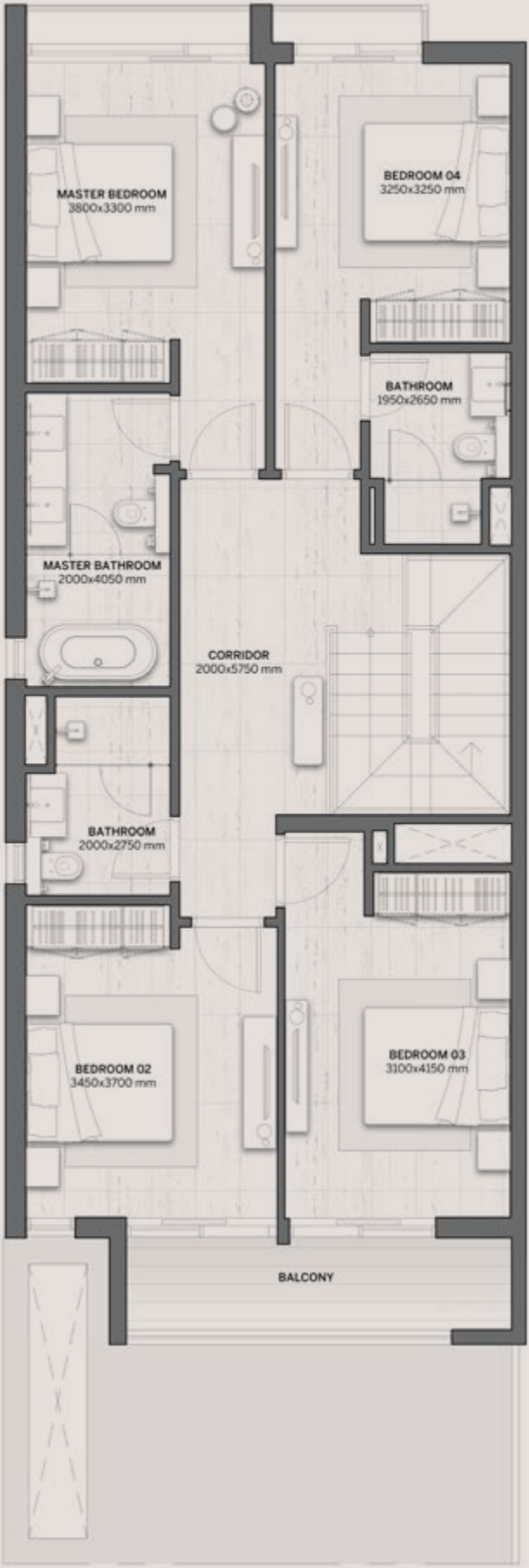
| RESIDENCE | SQM | SQFT |
|---------------|-----------|---------------|
| PLOT AREA | 258 - 362 | 2,782 - 3,898 |
| BUILT UP AREA | 373 | 4,011 |



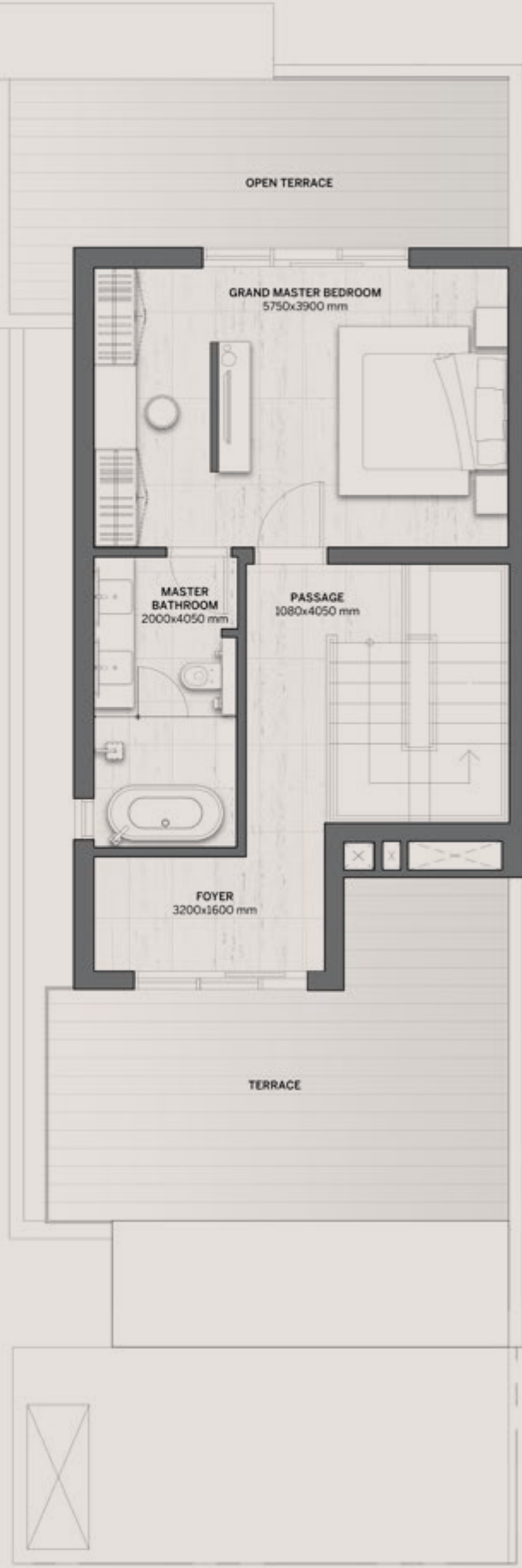
Disclaimer: All pictures, plans, layouts, information, data and details included in this brochure are indicative only and may change at any time up to the final 'as built' status in accordance with final designs of the project, regulatory approvals and planning permissions. All accessories and interior finishes such as wallpaper, chandeliers, furniture, electronics, white goods, curtains, hard and soft landscaping, pavements, features, gym, swimming pool(s) and other elements displayed in the brochure, or within the show apartment or between the plot boundary and the unit, are not part of the unit and are shown for illustrative purposes only.



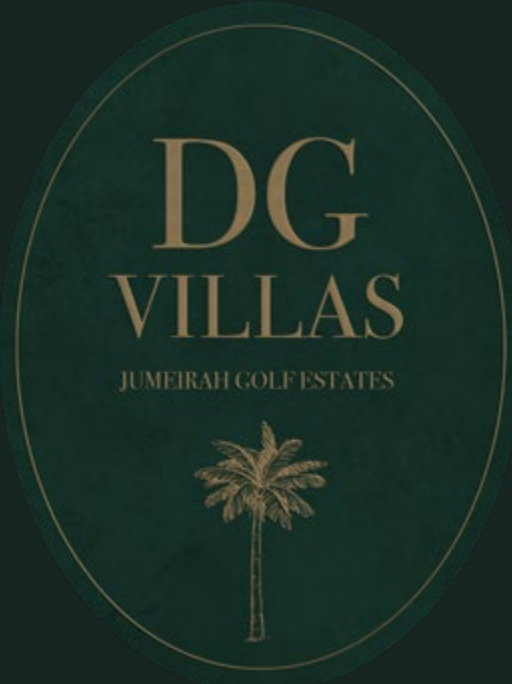
GROUND FLOOR



FIRST FLOOR



SECOND FLOOR



VILLA V29B
5-BEDROOM

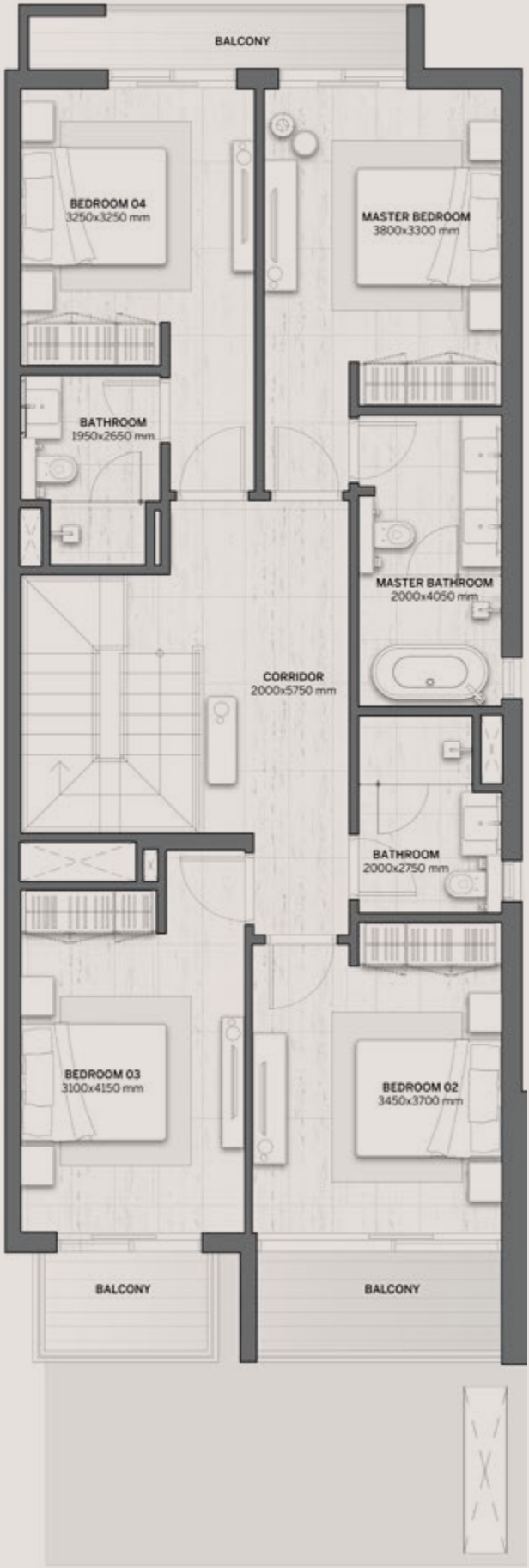
| RESIDENCE | SQM | SQFT |
|---------------|-----------|---------------|
| PLOT AREA | 260 - 312 | 2,799 - 3,364 |
| BUILT UP AREA | 376 | 4,048 |



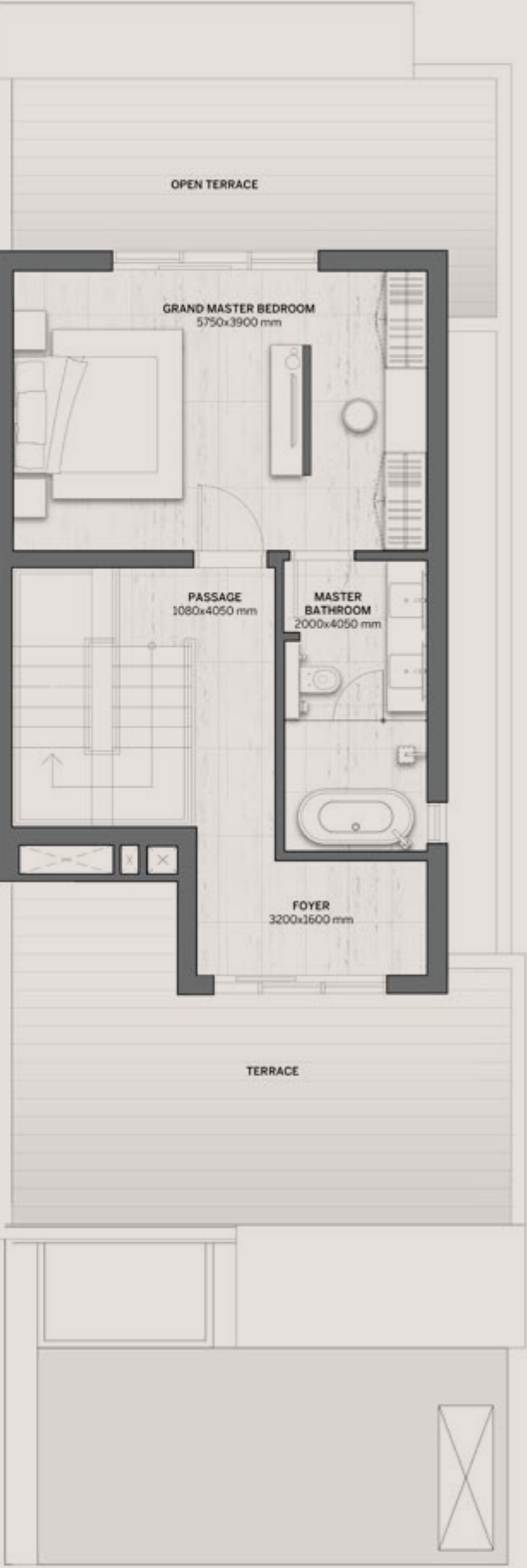
Disclaimer: All pictures, plans, layouts, information, data and details included in this brochure are indicative only and may change at any time up to the final 'as built' status in accordance with final designs of the project, regulatory approvals and planning permissions. All accessories and interior finishes such as wallpaper, chandeliers, furniture, electronics, white goods, curtains, hard and soft landscaping, pavements, features, gym, swimming pool(s) and other elements displayed in the brochure, or within the show apartment or between the plot boundary and the unit, are not part of the unit and are shown for illustrative purposes only.



GROUND FLOOR



FIRST FLOOR



SECOND FLOOR