



harmony II

 تلال الغاف
Tilal Al Ghaf

6 Bedroom Villa + Garden Suite Back View

Disclaimer: The plans, drawings, images, dimensions, area and all information provided herein are indicative, provided for illustrative purposes.



Floorplan

6 Bedroom Villa + Garden Suite

Total Area Size
605 SQ.M.
6,515 SQ.FT.

SPACE TO IMAGINE MORE

Select from 3 Garden Suite Options
Work
Play
Train

Ground Floor



First Floor





Space Lives Here

The expansive five-bedroom plot sizes within Harmony II include a standard Garden Suite available in three layouts and a larger Garden Suite available in three layouts available only with the larger 5-bedroom villa. Modern and elegant touch every part of the refined spacious layout, with extensive living area, first floor family area and master bedroom. Complete with stylish independent closed kitchen – generous in dimensions, en-suite bathrooms, large walk in closet within the master bedroom, garden and no shortage of storage space.



harmony II



5 bedroom Villa (Large) + Garden Suite – Back View

Disclaimer: The plans, drawings, images, dimensions, area and all information provided herein are indicative, provided for illustrative purposes.



Floorplan

5 Bedroom Villa (Large - Type A) + Garden Suite

Total Area Size
527 SQ.M.
5,677 SQ.FT.

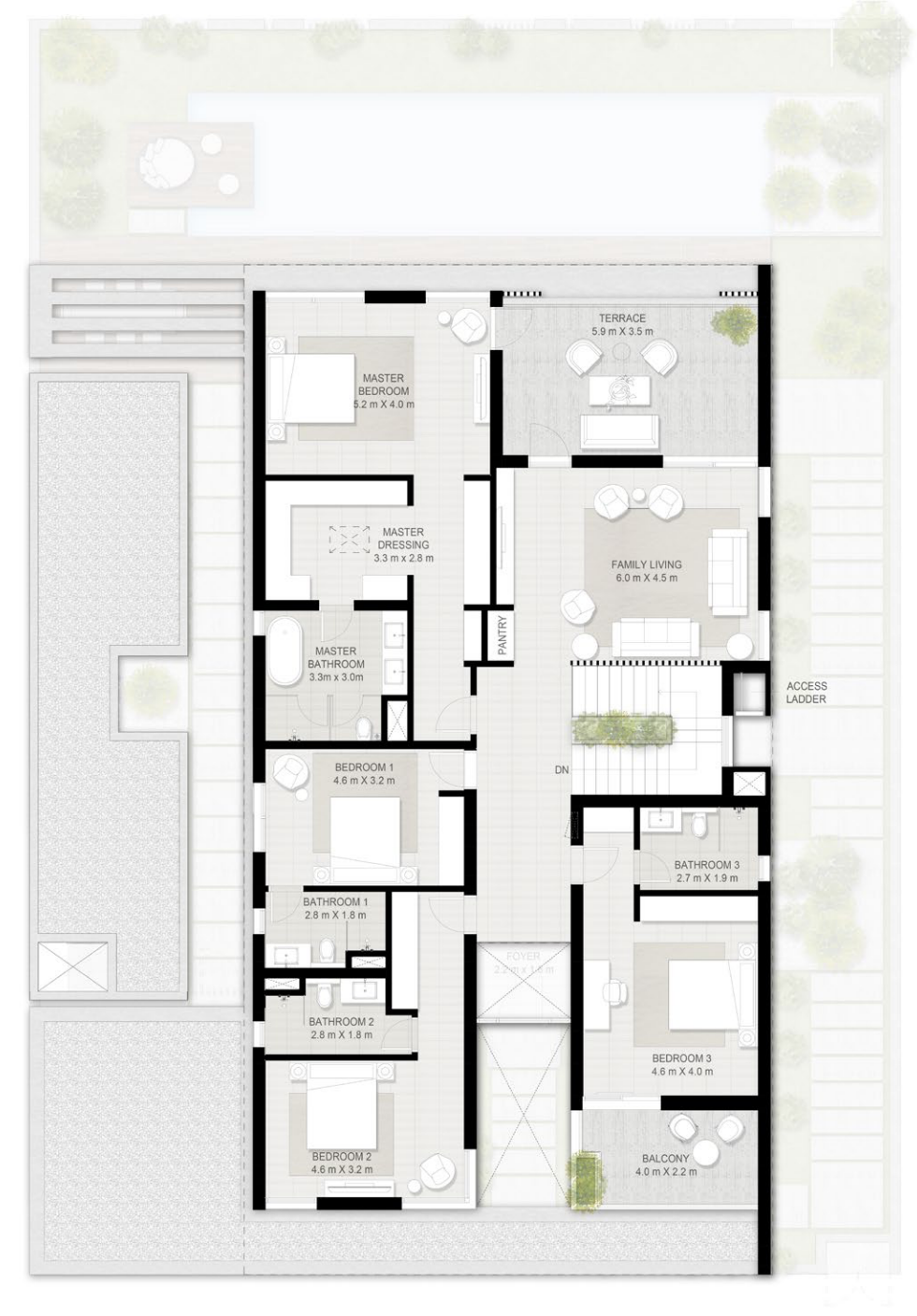
SPACE TO IMAGINE MORE

Select from 3 Garden Suite Options
Work
Play
Train

Ground Floor



First Floor





Floorplan

5 Bedroom Villa (Large - Type B) + Garden Suite

Total Area Size
527 SQ.M.
5,677 SQ.FT.

SPACE TO IMAGINE MORE

Select from 3 Garden Suite Options
Work
Play
Train

Ground Floor



First Floor



Ground Floor



First Floor



Floorplan

5 Bedroom Villa + Garden Suite

Total Area Size
416 SQ.M.
4,477 SQ.FT.

SPACE TO IMAGINE MORE

Select from 4 Garden Suite options
Creative
Wellness
Canvas
Culinary

Disclaimer: The plans, drawings, images, dimensions, area and all information provided herein are indicative, provided for illustrative purposes.



A Life in Flow

The timeless architecture of the four-bedroom villa has an increased plot size and a choice of four Garden Suite layouts increases the sense of fluid space. As well as timeless, the living space appears endless. The interior is naturally illuminated thanks to generous glazing, there's a larger downstairs living area that opens to the sprawling garden, larger family area with a choice of arrangements, a walk-in closet that compliments the master bedroom, an independent closed kitchen, en-suite bathrooms and plenty of storage throughout the villa.



4 Bedroom Villa + Garden Suite – Front View



4 Bedroom Villa + Garden Suite – Back View

harmony II

 تلال الغاف
Tilal Al Ghaf

Disclaimer: The plans, drawings, images, dimensions, area and all information provided herein are indicative, provided for illustrative purposes.

Ground Floor



First Floor



Floorplan

4 Bedroom Villa (Type A) + Garden Suite

Total Area Size
373 SQ.M.
4,016 SQ.FT.

SPACE TO IMAGINE MORE

- Select from 4 Garden Suite options
- Creative
- Wellness
- Canvas
- Culinary



Disclaimer: The plans, drawings, images, dimensions, area and all information provided herein are indicative, provided for illustrative purposes.



Floorplan

**4 Bedroom Villa
(Type B)
+ Garden Suite**

Total Area Size
375 SQ.M.
4,031 SQ.FT.

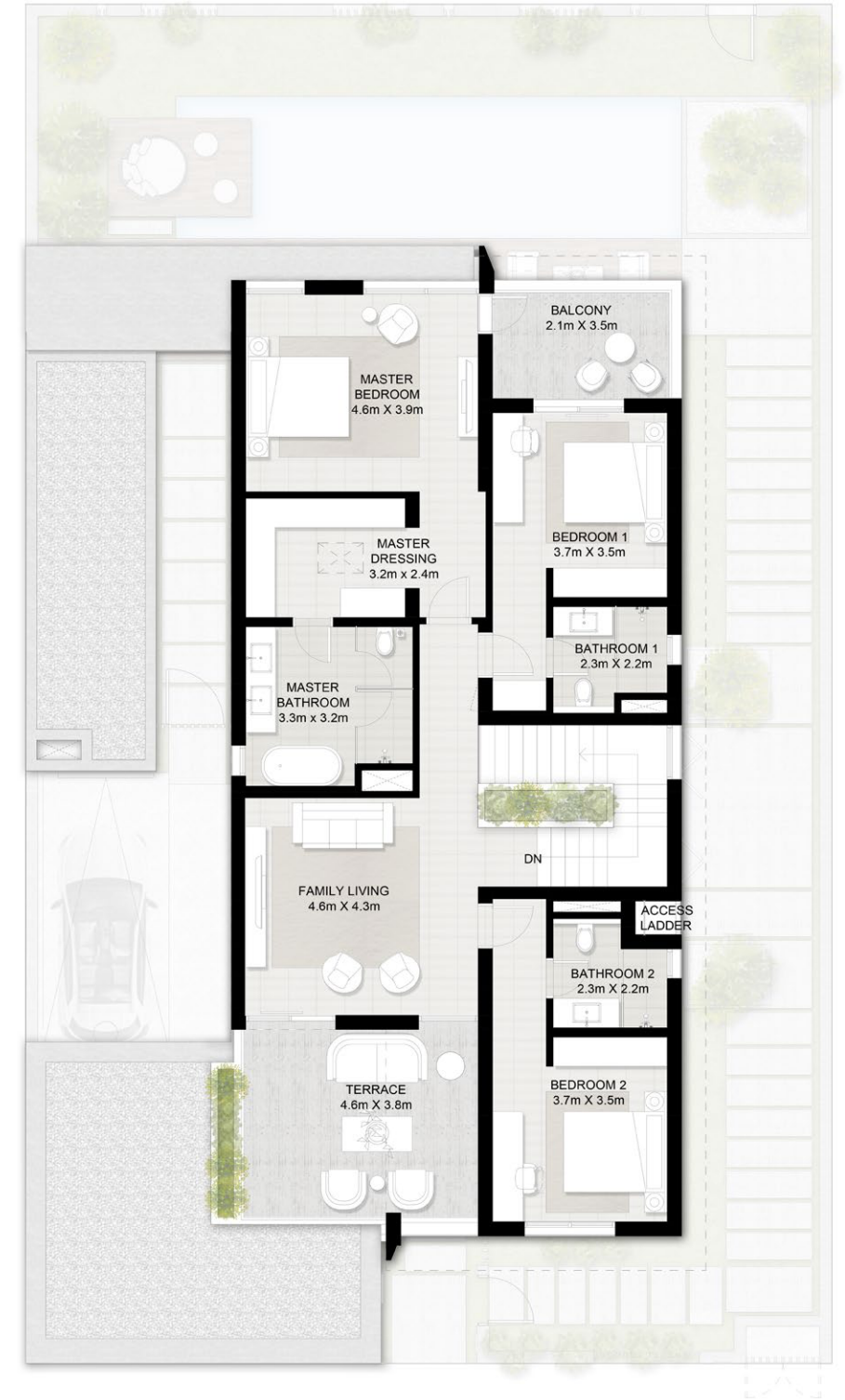
SPACE TO IMAGINE MORE

- Select from 4 Garden Suite options
- Creative
- Wellness
- Canvas
- Culinary

Ground Floor



First Floor



Disclaimer: The plans, drawings, images, dimensions, area and all information provided herein are indicative, provided for illustrative purposes.

Floorplan
Garden Suite

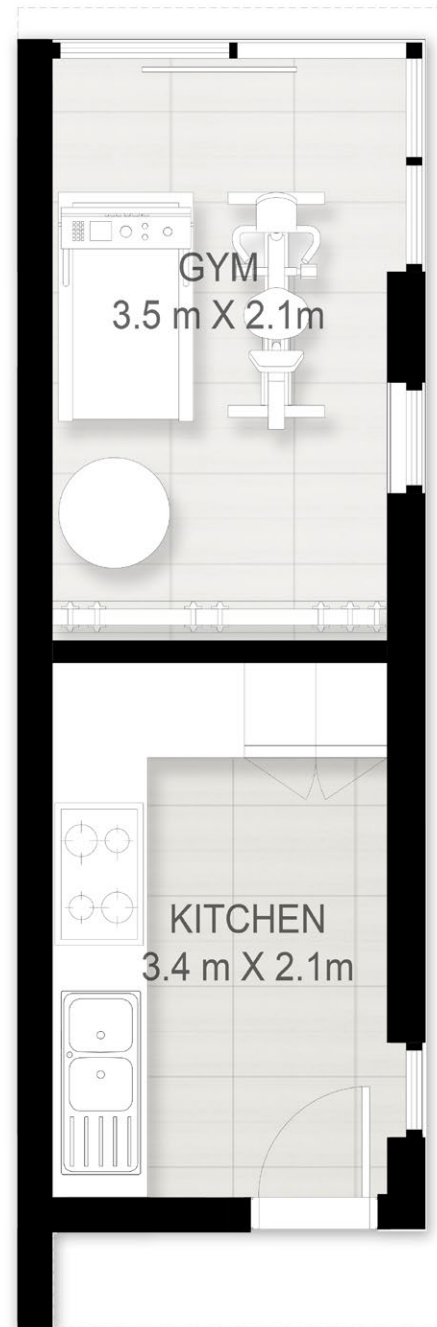
4 & 5 bedroom villas

Total Area Size
19 SQ.M.
205 SQ.FT.

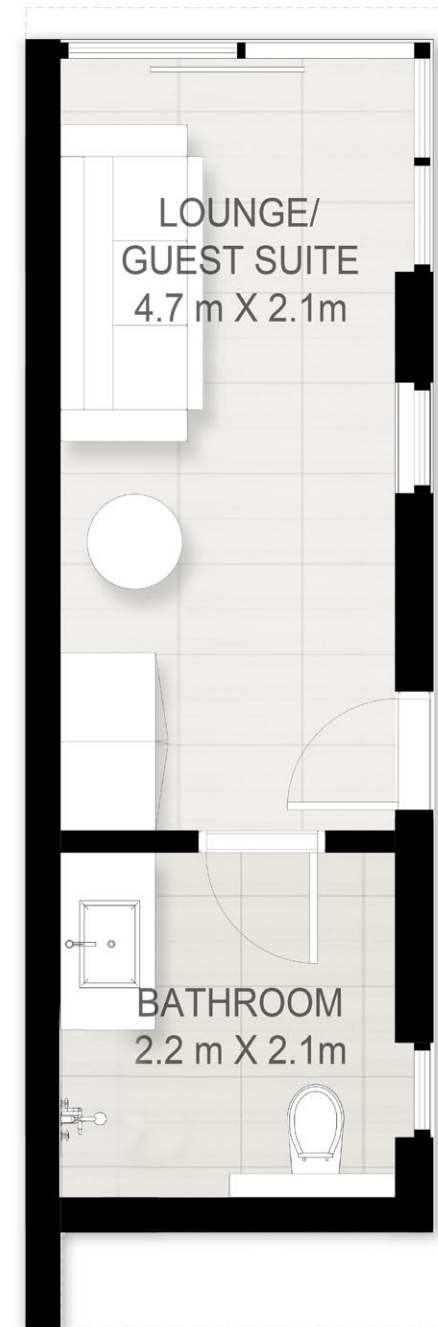
Layout 1
CREATIVE



Layout 2
WELLNESS



Layout 3
CANVAS



Layout 4
CULINARY

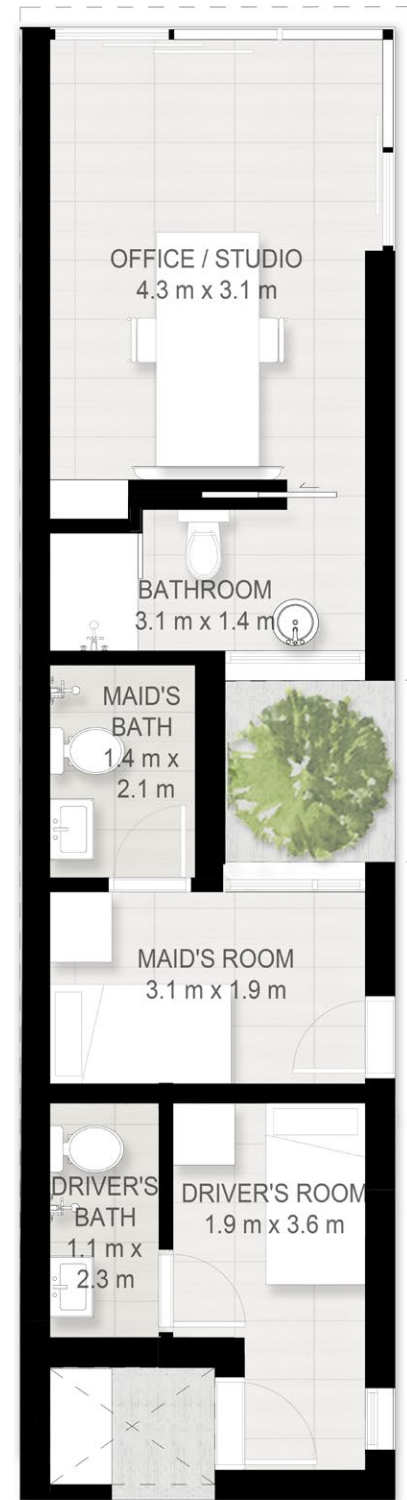


Floorplan
Garden Suite

5 bedroom (Large)
 & 6 bedroom villas

Total Area Size
 45 SQ.M.
 484 SQ.FT.

Layout 1
WORK SUITE



Layout 2
PLAY SUITE



Layout 3
TRAIN SUITE

